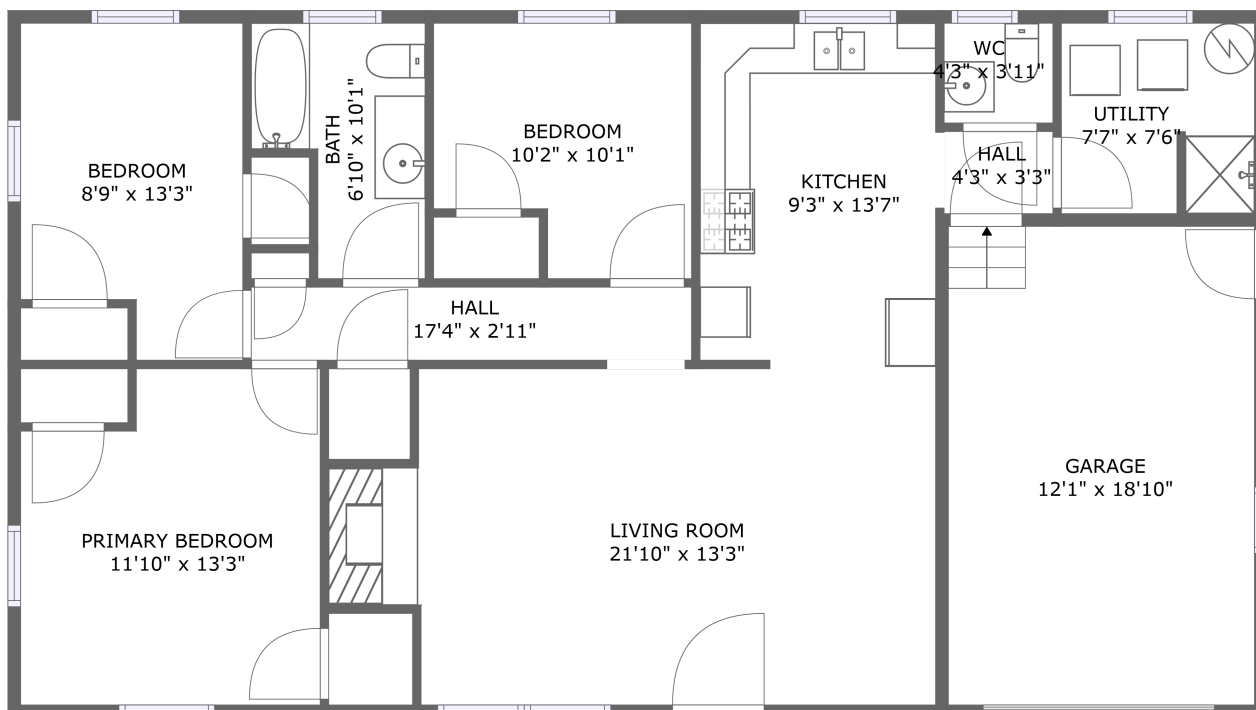


1957 County Rd 3000 N, Rantoul, IL, US



FLOOR 1

Property summary

 **1** Garages

 **3** Bedrooms

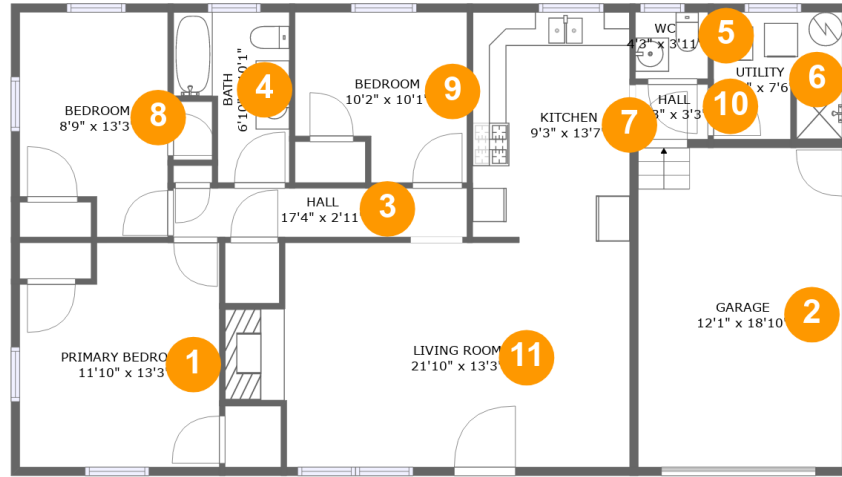
 **1** Bathrooms

 **1** Half baths

 **1** Floors

 **1,140**
Gross living
area sqft

 **1,383**
Total sqft

1957 County Rd 3000 N, Rantoul, IL, US**Room dimensions**

Floor 1

Total sqft: 1383 Living area: 1140

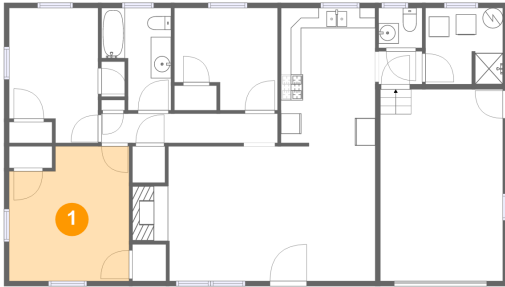
| # | | Dimensions | sqft | Counted as living area |
|----|-------------|----------------|------------|------------------------|
| 1 | Bedroom | 11'10" x 13'3" | 145 sq. ft | Yes |
| 2 | Garage | 12'1" x 18'10" | 228 sq. ft | No |
| 3 | Hall | 17'4" x 2'11" | 50 sq. ft | Yes |
| 4 | Bath | 6'10" x 10'1" | 56 sq. ft | Yes |
| 5 | Bath | 4'3" x 3'11" | 17 sq. ft | Yes |
| 6 | Utility | 7'7" x 7'6" | 56 sq. ft | Yes |
| 7 | Kitchen | 9'3" x 13'7" | 125 sq. ft | Yes |
| 8 | Bedroom | 8'9" x 13'3" | 105 sq. ft | Yes |
| 9 | Bedroom | 10'2" x 10'1" | 90 sq. ft | Yes |
| 10 | Hall | 4'3" x 3'3" | 14 sq. ft | Yes |
| 11 | Living Room | 21'10" x 13'3" | 289 sq. ft | Yes |

Scan captured on Thu, 14 Nov 2024 20:35:02 GMT

Information is calculated by Cubicasa technology deemed highly reliable but not guaranteed.

1957 County Rd 3000 N,Rantoul,IL,US

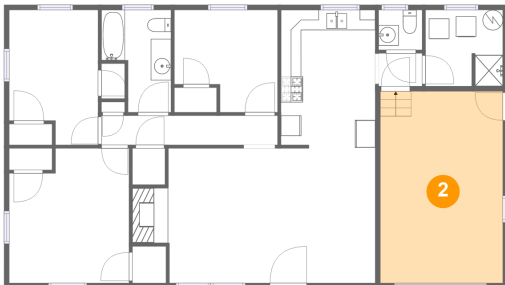
1 Floor 1 - Bedroom



Dimensions: 11'10" x 13'3"
Area: 145 sq. ft
Counted as living area: Yes

Heated: Yes
Finished: Yes
Enclosed: Yes
Contiguous: Yes
Permitted: Yes
Wet space: No
Addition: No
Conversion: No

2 Floor 1 - Garage

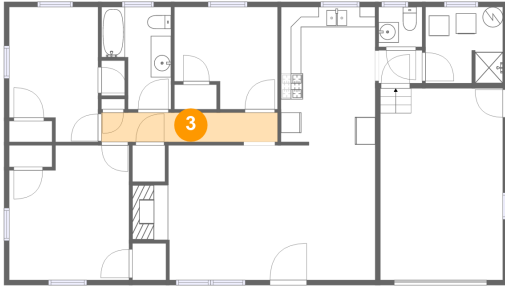


Dimensions: 12'1" x 18'10"
Area: 228 sq. ft
Counted as living area: No

Heated: No
Finished: No
Enclosed: Yes
Contiguous: Yes
Permitted: Yes
Wet space: No
Addition: No
Conversion: No

1957 County Rd 3000 N,Rantoul,IL,US

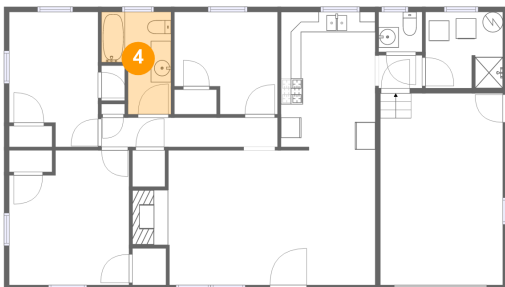
3 Floor 1 - Hall



Dimensions: 17'4" x 2'11"
Area: 50 sq. ft
Counted as living area: Yes

Heated: Yes
Finished: Yes
Enclosed: Yes
Contiguous: Yes
Permitted: Yes
Wet space: No
Addition: No
Conversion: No

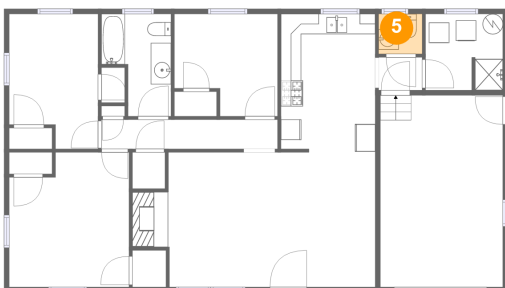
4 Floor 1 - Bath



Dimensions: 6'10" x 10'1"
Area: 56 sq. ft
Counted as living area: Yes

Heated: Yes
Finished: Yes
Enclosed: Yes
Contiguous: Yes
Permitted: Yes
Wet space: Yes
Addition: No
Conversion: No

5 Floor 1 - Bath

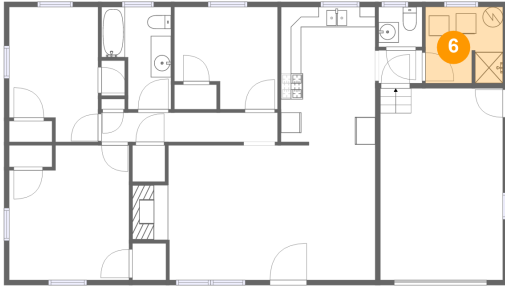


Dimensions: 4'3" x 3'11"
Area: 17 sq. ft
Counted as living area: Yes

Heated: Yes
Finished: Yes
Enclosed: Yes
Contiguous: Yes
Permitted: Yes
Wet space: Yes
Addition: No
Conversion: No

1957 County Rd 3000 N,Rantoul,IL,US

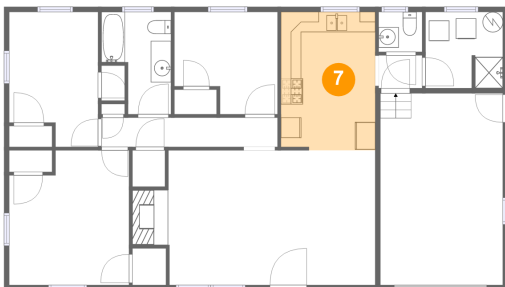
6 Floor 1 - Utility



Dimensions: 7'7" x 7'6"
Area: 56 sq. ft
Counted as living area: Yes

Heated: Yes
Finished: Yes
Enclosed: Yes
Contiguous: Yes
Permitted: Yes
Wet space: No
Addition: No
Conversion: No

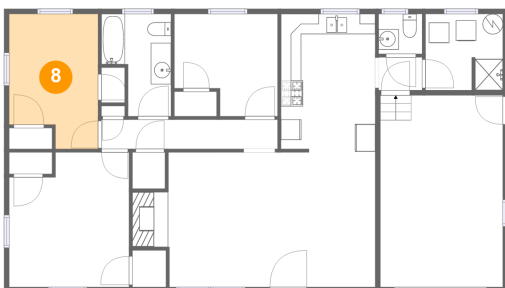
7 Floor 1 - Kitchen



Dimensions: 9'3" x 13'7"
Area: 125 sq. ft
Counted as living area: Yes

Heated: Yes
Finished: Yes
Enclosed: Yes
Contiguous: Yes
Permitted: Yes
Wet space: No
Addition: No
Conversion: No

8 Floor 1 - Bedroom

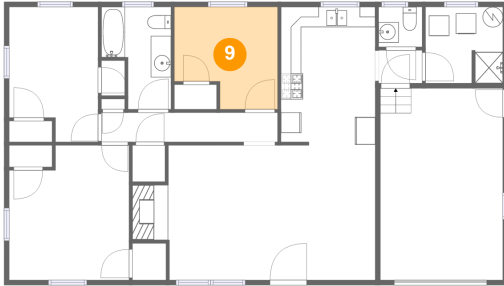


Dimensions: 8'9" x 13'3"
Area: 105 sq. ft
Counted as living area: Yes

Heated: Yes
Finished: Yes
Enclosed: Yes
Contiguous: Yes
Permitted: Yes
Wet space: No
Addition: No
Conversion: No

1957 County Rd 3000 N,Rantoul,IL,US

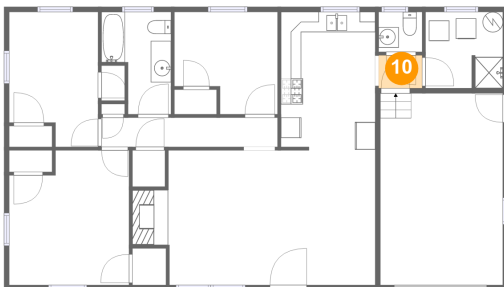
9 Floor 1 - Bedroom



Dimensions: 10'2" x 10'1"
Area: 90 sq. ft
Counted as living area: Yes

Heated: Yes
Finished: Yes
Enclosed: Yes
Contiguous: Yes
Permitted: Yes
Wet space: No
Addition: No
Conversion: No

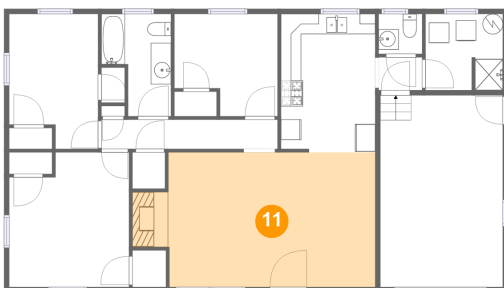
10 Floor 1 - Hall



Dimensions: 4'3" x 3'3"
Area: 14 sq. ft
Counted as living area: Yes

Heated: Yes
Finished: Yes
Enclosed: Yes
Contiguous: Yes
Permitted: Yes
Wet space: No
Addition: No
Conversion: No

11 Floor 1 - Living Room



Dimensions: 21'10" x 13'3"
Area: 289 sq. ft
Counted as living area: Yes

Heated: Yes
Finished: Yes
Enclosed: Yes
Contiguous: Yes
Permitted: Yes
Wet space: No
Addition: No
Conversion: No