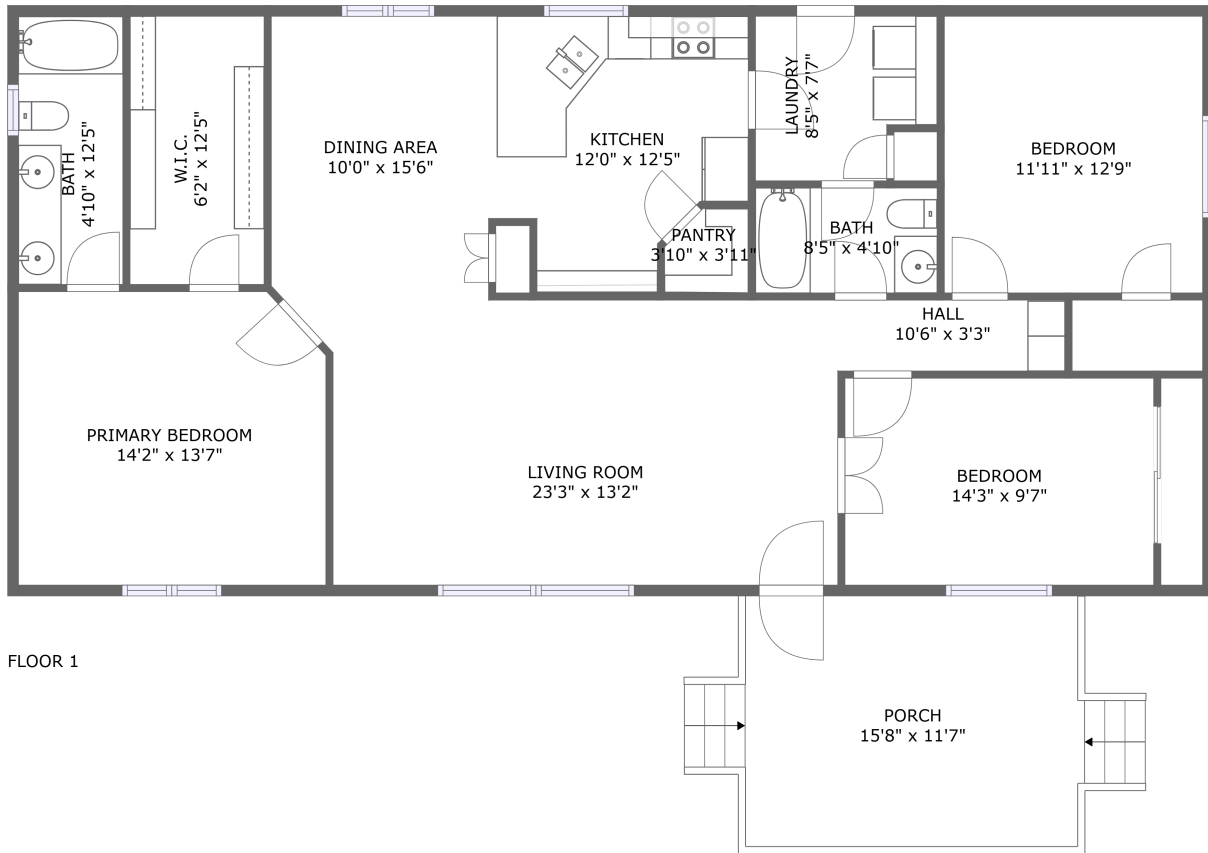


625 Southwest 9th Street, Dundee, Yamhill County, Oregon, United States, 97115, 27

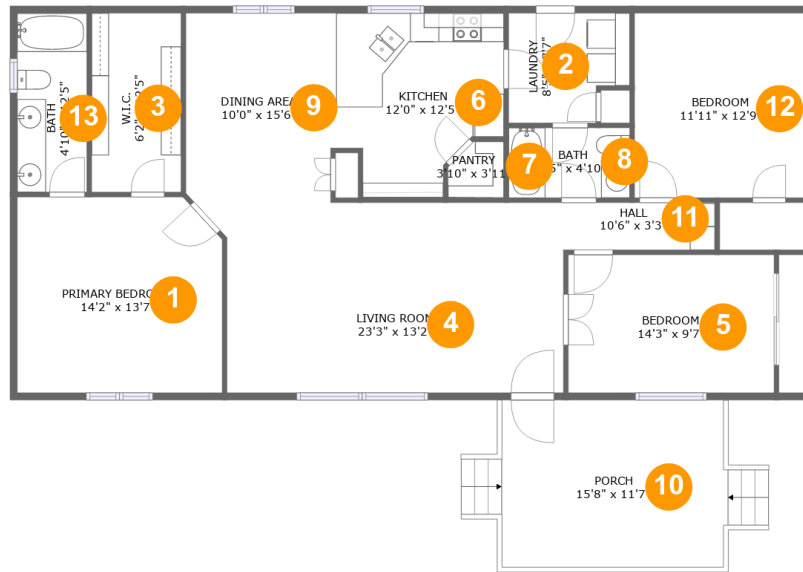


Property summary

0 Garages **3** Bedrooms **2** Bathrooms **0** Half baths

1 Floors **1,521** Gross living area sqft **1,700** Total sqft

625 Southwest 9th Street, Dundee, Yamhill County, Oregon, United States, 97115, 27



Room dimensions

Floor 1

Total sqft: 1700 Living area: 1521

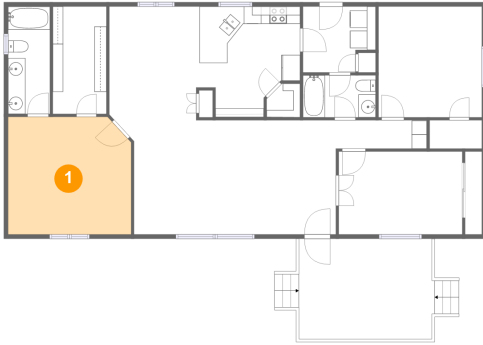
#		Dimensions	sqft	Counted as living area
1	Primary Bedroom	14'2" x 13'7"	189 sq. ft	Yes
2	Laundry	8'5" x 7'7"	58 sq. ft	Yes
3	W.I.C.	6'2" x 12'5"	77 sq. ft	Yes
4	Living Room	23'3" x 13'2"	298 sq. ft	Yes
5	Bedroom	14'3" x 9'7"	136 sq. ft	Yes
6	Kitchen	12'0" x 12'5"	130 sq. ft	Yes
7	Pantry	3'10" x 3'11"	14 sq. ft	Yes
8	Bath	8'5" x 4'10"	41 sq. ft	Yes
9	Dining Area	10'0" x 15'6"	143 sq. ft	Yes
10	Porch	15'8" x 11'7"	179 sq. ft	No
11	Hall	10'6" x 3'3"	34 sq. ft	Yes

**625 Southwest 9th Street, Dundee, Yamhill County,
Oregon, United States, 97115, 27**

#		Dimensions	sqft	Counted as living area
12	Bedroom	11'11" x 12'9"	153 sq. ft	Yes
13	Bath	4'10" x 12'5"	60 sq. ft	Yes

**625 Southwest 9th Street, Dundee, Yamhill County,
Oregon, United States, 97115, 27**

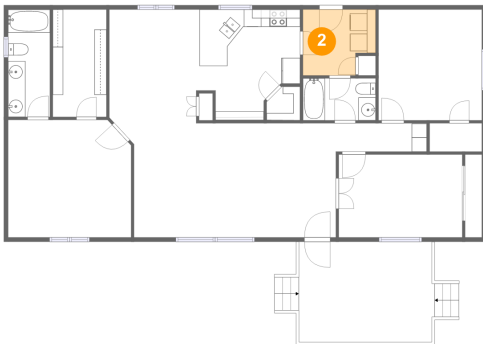
1 Floor 1 - Primary Bedroom



Dimensions: 14'2" x 13'7"
Area: 189 sq. ft
Counted as living area: Yes

Heated: Yes
Finished: Yes
Enclosed: Yes
Contiguous: Yes
Permitted: Yes
Wet space: No
Addition: No
Conversion: No

2 Floor 1 - Laundry

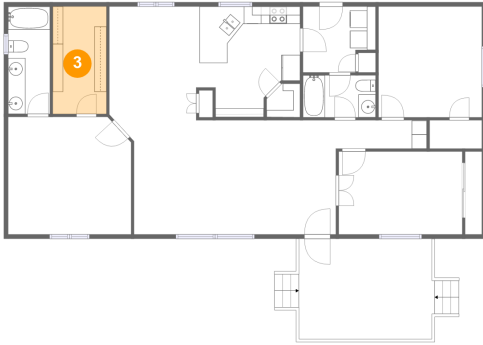


Dimensions: 8'5" x 7'7"
Area: 58 sq. ft
Counted as living area: Yes

Heated: Yes
Finished: Yes
Enclosed: Yes
Contiguous: Yes
Permitted: Yes
Wet space: No
Addition: No
Conversion: No

**625 Southwest 9th Street, Dundee, Yamhill County,
Oregon, United States, 97115, 27**

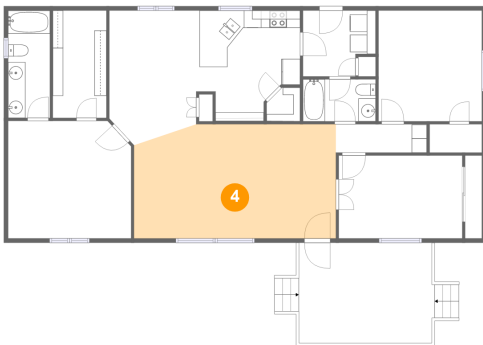
3 Floor 1 - W.I.C.



Dimensions: 6'2" x 12'5"
Area: 77 sq. ft
Counted as living area: Yes

Heated: Yes
Finished: Yes
Enclosed: Yes
Contiguous: Yes
Permitted: Yes
Wet space: No
Addition: No
Conversion: No

4 Floor 1 - Living Room



Dimensions: 23'3" x 13'2"
Area: 298 sq. ft
Counted as living area: Yes

Heated: Yes
Finished: Yes
Enclosed: Yes
Contiguous: Yes
Permitted: Yes
Wet space: No
Addition: No
Conversion: No

5 Floor 1 - Bedroom

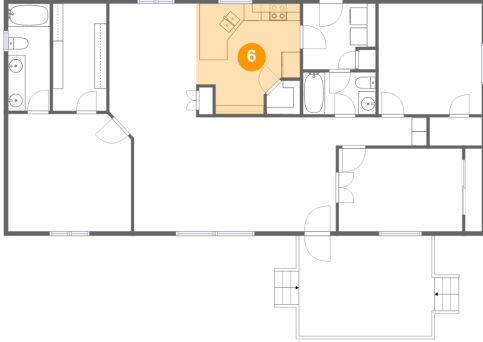


Dimensions: 14'3" x 9'7"
Area: 136 sq. ft
Counted as living area: Yes

Heated: Yes
Finished: Yes
Enclosed: Yes
Contiguous: Yes
Permitted: Yes
Wet space: No
Addition: No
Conversion: No

625 Southwest 9th Street, Dundee, Yamhill County, Oregon, United States, 97115, 27

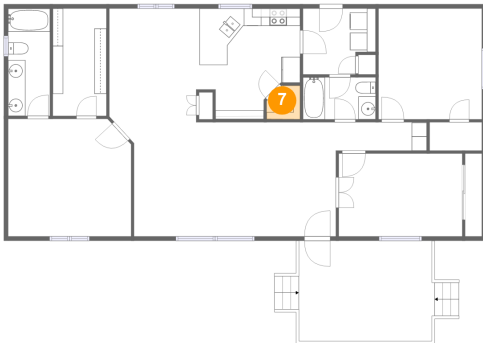
6 Floor 1 - Kitchen



Dimensions: 12'0" x 12'5"
Area: 130 sq. ft
Counted as living area: Yes

Heated: Yes
Finished: Yes
Enclosed: Yes
Contiguous: Yes
Permitted: Yes
Wet space: No
Addition: No
Conversion: No

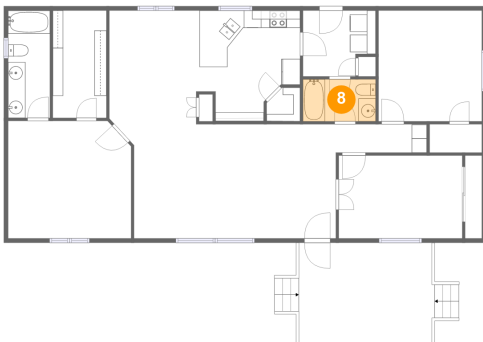
7 Floor 1 - Pantry



Dimensions: 3'10" x 3'11"
Area: 14 sq. ft
Counted as living area: Yes

Heated: Yes
Finished: Yes
Enclosed: Yes
Contiguous: Yes
Permitted: Yes
Wet space: No
Addition: No
Conversion: No

8 Floor 1 - Bath

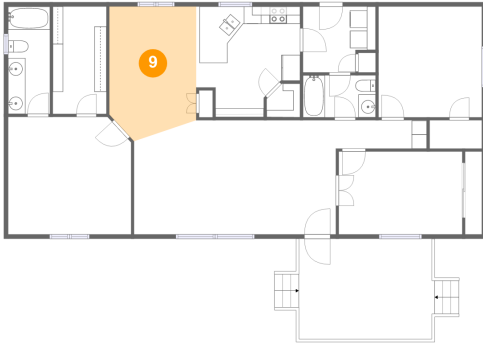


Dimensions: 8'5" x 4'10"
Area: 41 sq. ft
Counted as living area: Yes

Heated: Yes
Finished: Yes
Enclosed: Yes
Contiguous: Yes
Permitted: Yes
Wet space: Yes
Addition: No
Conversion: No

625 Southwest 9th Street, Dundee, Yamhill County, Oregon, United States, 97115, 27

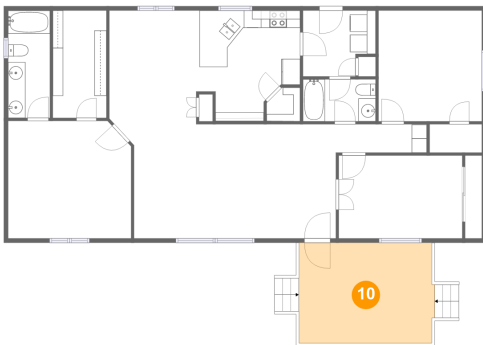
9 Floor 1 - Dining Area



Dimensions: 10'0" x 15'6"
Area: 143 sq. ft
Counted as living area: Yes

Heated: Yes
Finished: Yes
Enclosed: Yes
Contiguous: Yes
Permitted: Yes
Wet space: No
Addition: No
Conversion: No

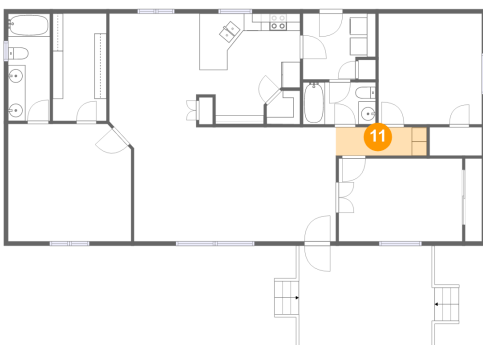
10 Floor 1 - Porch



Dimensions: 15'8" x 11'7"
Area: 179 sq. ft
Counted as living area: No

Heated: No
Finished: Yes
Enclosed: No
Contiguous: Yes
Permitted: Yes
Wet space: No
Addition: No
Conversion: No

11 Floor 1 - Hall

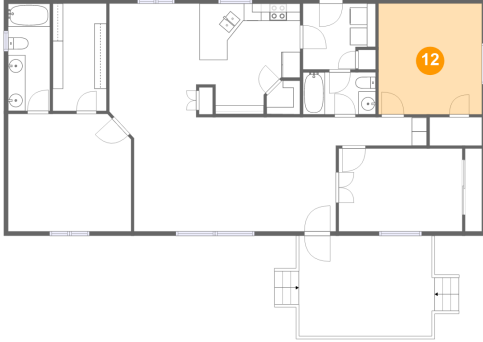


Dimensions: 10'6" x 3'3"
Area: 34 sq. ft
Counted as living area: Yes

Heated: Yes
Finished: Yes
Enclosed: Yes
Contiguous: Yes
Permitted: Yes
Wet space: No
Addition: No
Conversion: No

**625 Southwest 9th Street, Dundee, Yamhill County,
Oregon, United States, 97115, 27**

12 Floor 1 - Bedroom



Dimensions: 11'11" x 12'9"
Area: 153 sq. ft
Counted as living area: Yes

Heated: Yes
Finished: Yes
Enclosed: Yes
Contiguous: Yes
Permitted: Yes
Wet space: No
Addition: No
Conversion: No

13 Floor 1 - Bath



Dimensions: 4'10" x 12'5"
Area: 60 sq. ft
Counted as living area: Yes

Heated: Yes
Finished: Yes
Enclosed: Yes
Contiguous: Yes
Permitted: Yes
Wet space: Yes
Addition: No
Conversion: No