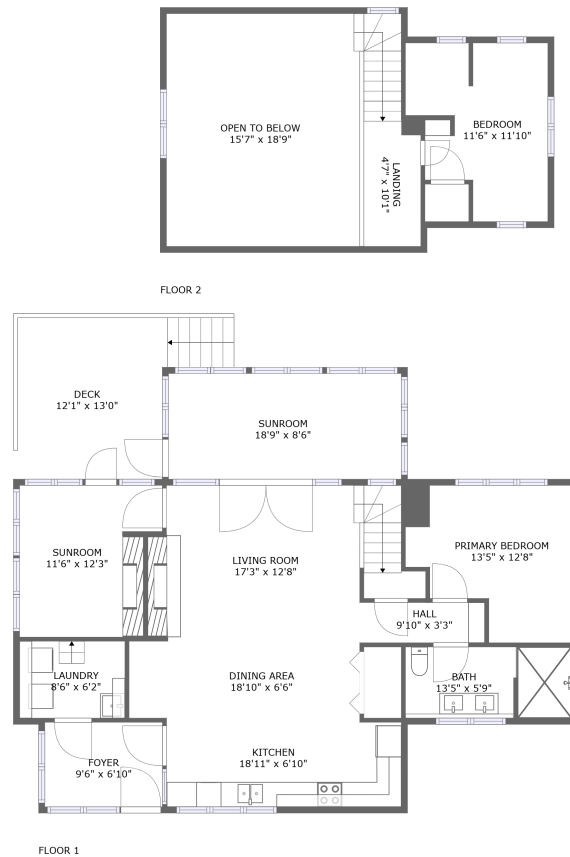


Home report

1103 East Ludlow Ridge Road, Port Ludlow, Jefferson County,  
Washington, United States, 98365



**Total Area: 1404 sq. ft**

Floor 1: 1200 sq. ft, Floor 2: 204 sq. ft

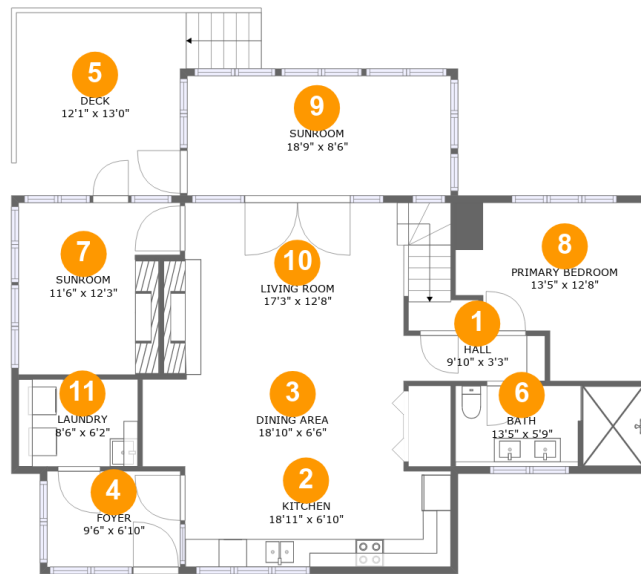
Excluded: Deck 176 sq. ft, Open to below 291 sq. ft, Low ceiling 33 sq. ft, Walls: 140 sq. ft

## Property summary



Home report

**1103 East Ludlow Ridge Road, Port Ludlow, Jefferson County, Washington, United States, 98365**



**Room dimensions**

Floor 1

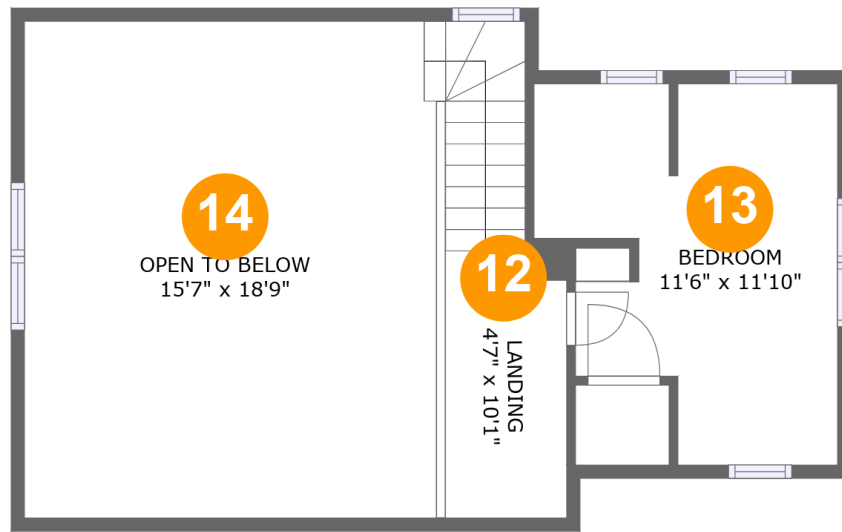
Total:1200sqft

Excluded: 176sqft

#		Max Dimensions	sqft	Included
1	Hall	9'10" x 3'3"	32 sq. ft	Yes
2	Kitchen	18'11" x 6'10"	129 sq. ft	Yes
3	Dining Area	18'10" x 6'6"	120 sq. ft	Yes
4	Foyer	9'6" x 6'10"	65 sq. ft	Yes
5	Deck	12'1" x 13'0"	176 sq. ft	No
6	Bath	13'5" x 5'9"	76 sq. ft	Yes
7	Sunroom	11'6" x 12'3"	127 sq. ft	Yes
8	Primary Bedroom	13'5" x 12'8"	141 sq. ft	Yes
9	Sunroom	18'9" x 8'6"	160 sq. ft	Yes
10	Living Room	17'3" x 12'8"	234 sq. ft	Yes
11	Laundry	8'6" x 6'2"	53 sq. ft	Yes

Home report

1103 East Ludlow Ridge Road, Port Ludlow, Jefferson County, Washington, United States, 98365



### Room dimensions

Floor 2

Total:204sqft

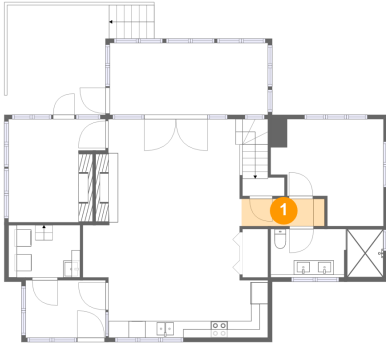
Excluded: 324sqft

#		Max Dimensions	sqft	Included
12	Landing	4'7" x 10'1"	73 sq. ft	Yes
13	Bedroom	11'6" x 11'10"	115 sq. ft	Yes
14	Open To Below	15'7" x 18'9"	291 sq. ft	No

1103 East Ludlow Ridge Road, Port Ludlow, Jefferson County,  
Washington, United States, 98365

**1** Floor 1 - Hall

---

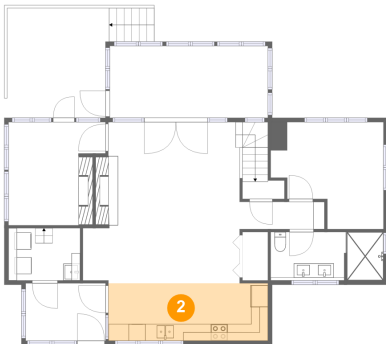


Max Dimensions: 9'10" x 3'3"  
Calculated Area: 32 sq. ft  
Included: Yes

Heated: Yes  
Finished: Yes  
Enclosed: Yes  
Contiguous: Yes  
Permitted: Yes  
Wet space: No  
Addition: No  
Conversion: No

**2** Floor 1 - Kitchen

---

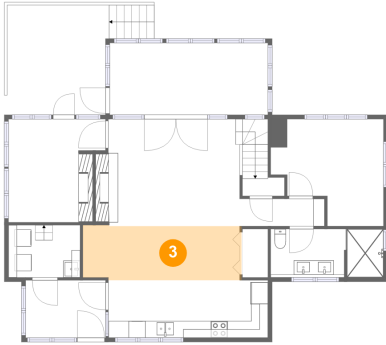


Max Dimensions: 18'11" x 6'10"  
Calculated Area: 129 sq. ft  
Included: Yes

Heated: Yes  
Finished: Yes  
Enclosed: Yes  
Contiguous: Yes  
Permitted: Yes  
Wet space: No  
Addition: No  
Conversion: No

1103 East Ludlow Ridge Road, Port Ludlow, Jefferson County, Washington, United States, 98365

**3** Floor 1 - Dining Area



Max Dimensions: 18'10" x 6'6"  
Calculated Area: 120 sq. ft  
Included: Yes

Heated: Yes  
Finished: Yes  
Enclosed: Yes  
Contiguous: Yes  
Permitted: Yes  
Wet space: No  
Addition: No  
Conversion: No

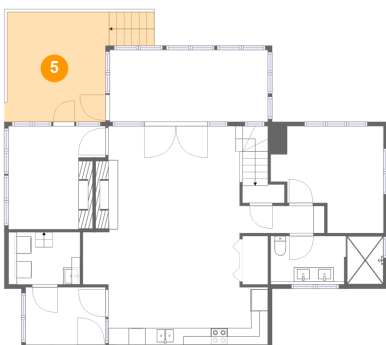
**4** Floor 1 - Foyer



Max Dimensions: 9'6" x 6'10"  
Calculated Area: 65 sq. ft  
Included: Yes

Heated: Yes  
Finished: Yes  
Enclosed: Yes  
Contiguous: Yes  
Permitted: Yes  
Wet space: No  
Addition: No  
Conversion: No

**5** Floor 1 - Deck

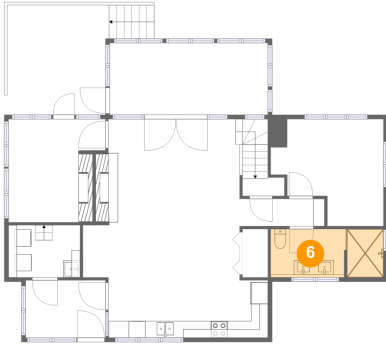


Max Dimensions: 12'1" x 13'0"  
Calculated Area: 176 sq. ft  
Included: No

Heated: No  
Finished: Yes  
Enclosed: No  
Contiguous: Yes  
Permitted: Yes  
Wet space: No  
Addition: No  
Conversion: No

1103 East Ludlow Ridge Road, Port Ludlow, Jefferson County, Washington, United States, 98365

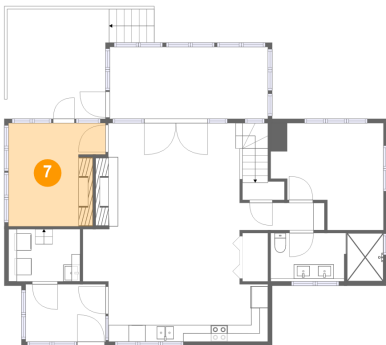
**6** Floor 1 - Bath



Max Dimensions: 13'5" x 5'9"  
Calculated Area: 76 sq. ft  
Included: Yes

Heated: Yes  
Finished: Yes  
Enclosed: Yes  
Contiguous: Yes  
Permitted: Yes  
Wet space: Yes  
Addition: No  
Conversion: No

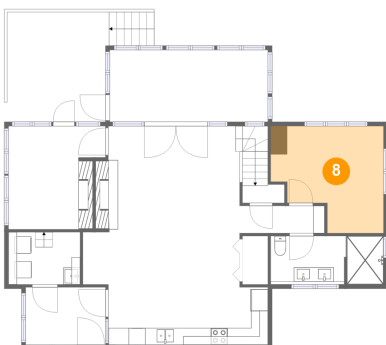
**7** Floor 1 - Sunroom



Max Dimensions: 11'6" x 12'3"  
Calculated Area: 127 sq. ft  
Included: Yes

Heated: Yes  
Finished: Yes  
Enclosed: Yes  
Contiguous: Yes  
Permitted: Yes  
Wet space: No  
Addition: No  
Conversion: No

**8** Floor 1 - Primary Bedroom

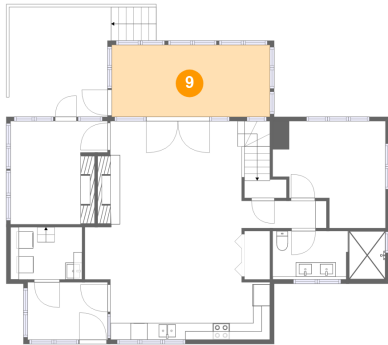


Max Dimensions: 13'5" x 12'8"  
Calculated Area: 141 sq. ft  
Included: Yes

Heated: Yes  
Finished: Yes  
Enclosed: Yes  
Contiguous: Yes  
Permitted: Yes  
Wet space: No  
Addition: No  
Conversion: No

1103 East Ludlow Ridge Road, Port Ludlow, Jefferson County, Washington, United States, 98365

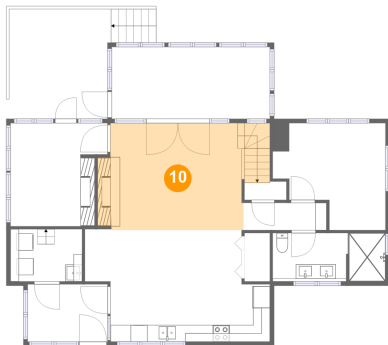
9 Floor 1 - Sunroom



Max Dimensions: 18'9" x 8'6"  
Calculated Area: 160 sq. ft  
Included: Yes

Heated: Yes  
Finished: Yes  
Enclosed: Yes  
Contiguous: Yes  
Permitted: Yes  
Wet space: No  
Addition: No  
Conversion: No

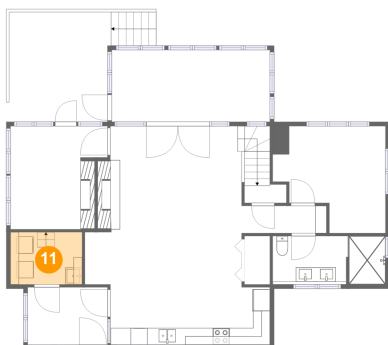
10 Floor 1 - Living Room



Max Dimensions: 17'3" x 12'8"  
Calculated Area: 234 sq. ft  
Included: Yes

Heated: Yes  
Finished: Yes  
Enclosed: Yes  
Contiguous: Yes  
Permitted: Yes  
Wet space: No  
Addition: No  
Conversion: No

11 Floor 1 - Laundry

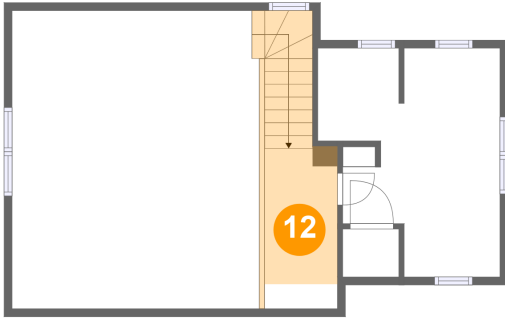


Max Dimensions: 8'6" x 6'2"  
Calculated Area: 53 sq. ft  
Included: Yes

Heated: Yes  
Finished: Yes  
Enclosed: Yes  
Contiguous: Yes  
Permitted: Yes  
Wet space: No  
Addition: No  
Conversion: No

1103 East Ludlow Ridge Road, Port Ludlow, Jefferson County, Washington, United States, 98365

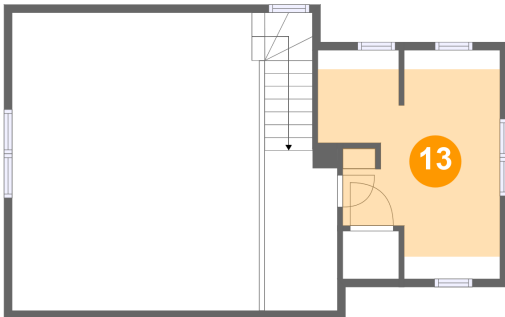
### 12 Floor 2 - Landing



Max Dimensions: 4'7" x 10'1"  
Calculated Area: 73 sq. ft  
Included: Yes

Heated: Yes  
Finished: Yes  
Enclosed: Yes  
Contiguous: Yes  
Permitted: Yes  
Wet space: No  
Addition: No  
Conversion: No

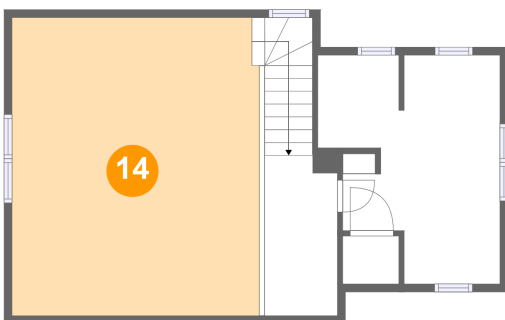
### 13 Floor 2 - Bedroom



Max Dimensions: 11'6" x 11'10"  
Calculated Area: 115 sq. ft  
Included: Yes

Heated: Yes  
Finished: Yes  
Enclosed: Yes  
Contiguous: Yes  
Permitted: Yes  
Wet space: No  
Addition: No  
Conversion: No

### 14 Floor 2 - Open To Below



Max Dimensions: 15'7" x 18'9"  
Calculated Area: 291 sq. ft  
Included: No

Heated: No  
Finished: No  
Enclosed: No  
Contiguous: Yes  
Permitted: No  
Wet space: No  
Addition: No  
Conversion: No