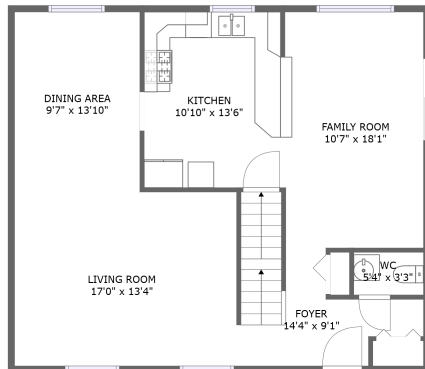
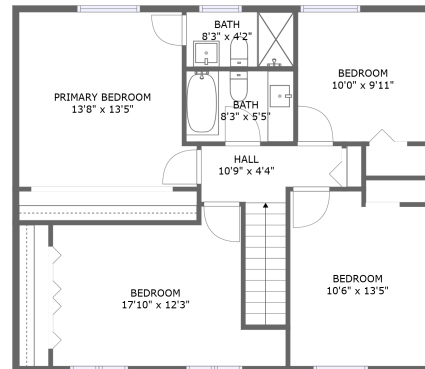


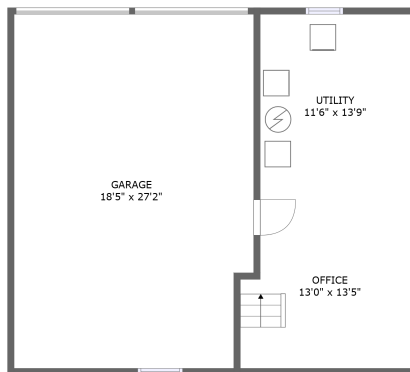
# 247 Peakview Drive, Henrietta, Monroe County, New York, United States, 14467



FLOOR 2




FLOOR 3



FLOOR 1

## Property summary

 **1** Garages

 **4** Bedrooms

 **2** Bathrooms

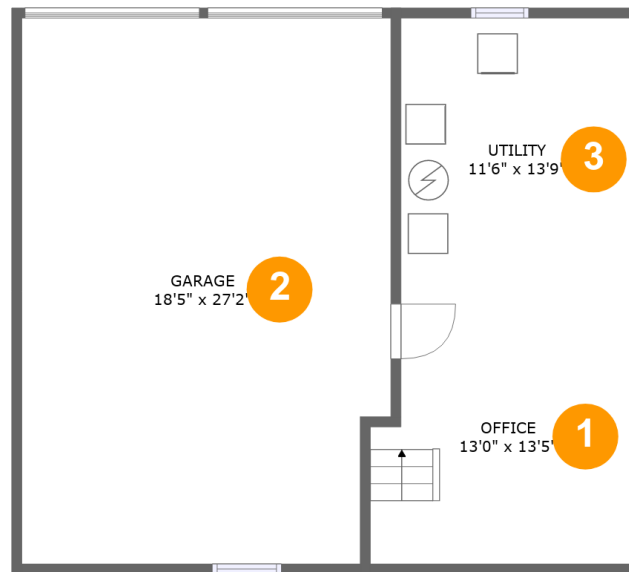
 **1** Half baths

 **3** Floors

 **1,822** Gross living area sqft

 **2,707** Total sqft

# 247 Peakview Drive, Henrietta, Monroe County, New York, United States, 14467



## Room dimensions

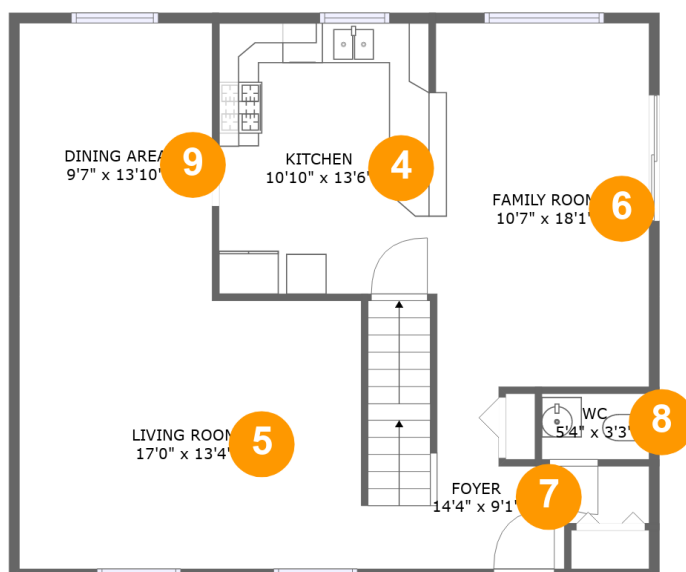
Floor 1

Total sqft: 885

Living area: 0

| # |         | Dimensions    | sqft       | Counted as living area |
|---|---------|---------------|------------|------------------------|
| 1 | Office  | 13'0" x 13'5" | 165 sq. ft | No                     |
| 2 | Garage  | 18'5" x 27'2" | 488 sq. ft | No                     |
| 3 | Utility | 11'6" x 13'9" | 158 sq. ft | No                     |

# 247 Peakview Drive, Henrietta, Monroe County, New York, United States, 14467



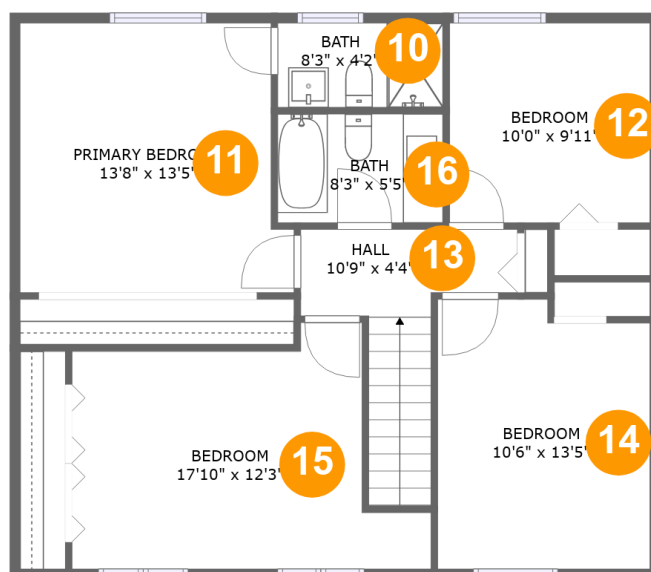
## Room dimensions

Floor 2

Total sqft: 911 Living area: 911

| # |             | Dimensions     | sqft       | Counted as living area |
|---|-------------|----------------|------------|------------------------|
| 4 | Kitchen     | 10'10" x 13'6" | 145 sq. ft | Yes                    |
| 5 | Living Room | 17'0" x 13'4"  | 227 sq. ft | Yes                    |
| 6 | Family Room | 10'7" x 18'1"  | 191 sq. ft | Yes                    |
| 7 | Foyer       | 14'4" x 9'1"   | 101 sq. ft | Yes                    |
| 8 | WC          | 5'4" x 3'3"    | 18 sq. ft  | Yes                    |
| 9 | Dining Area | 9'7" x 13'10"  | 133 sq. ft | Yes                    |

# 247 Peakview Drive, Henrietta, Monroe County, New York, United States, 14467



## Room dimensions

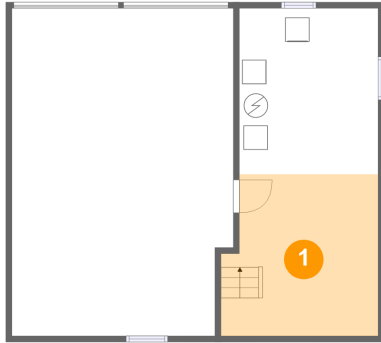
Floor 3

Total sqft: 911 Living area: 911

| #  |                 | Dimensions     | sqft       | Counted as living area |
|----|-----------------|----------------|------------|------------------------|
| 10 | Bath            | 8'3" x 4'2"    | 34 sq. ft  | Yes                    |
| 11 | Primary Bedroom | 13'8" x 13'5"  | 171 sq. ft | Yes                    |
| 12 | Bedroom         | 10'0" x 9'11"  | 99 sq. ft  | Yes                    |
| 13 | Hall            | 10'9" x 4'4"   | 71 sq. ft  | Yes                    |
| 14 | Bedroom         | 10'6" x 13'5"  | 136 sq. ft | Yes                    |
| 15 | Bedroom         | 17'10" x 12'3" | 170 sq. ft | Yes                    |
| 16 | Bath            | 8'3" x 5'5"    | 44 sq. ft  | Yes                    |

# 247 Peakview Drive, Henrietta, Monroe County, New York, United States, 14467

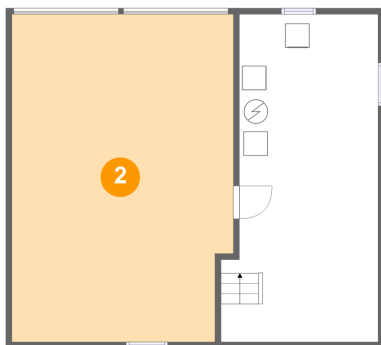
## 1 Floor 1 - Office



Dimensions: 13'0" x 13'5"  
Area: 165 sq. ft  
Counted as living area: No

Heated: Yes  
Finished: Yes  
Enclosed: Yes  
Contiguous: No  
Permitted: Yes  
Wet space: No  
Addition: No  
Conversion: No

## 2 Floor 1 - Garage

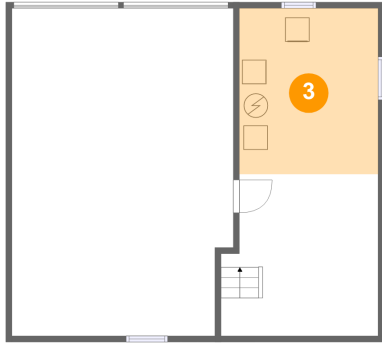


Dimensions: 18'5" x 27'2"  
Area: 488 sq. ft  
Counted as living area: No

Heated: No  
Finished: No  
Enclosed: Yes  
Contiguous: Yes  
Permitted: Yes  
Wet space: No  
Addition: No  
Conversion: No

# 247 Peakview Drive, Henrietta, Monroe County, New York, United States, 14467

## 3 Floor 1 - Utility



Dimensions: 11'6" x 13'9"  
Area: 158 sq. ft  
Counted as living area: No

Heated: Yes  
Finished: No  
Enclosed: Yes  
Contiguous: Yes  
Permitted: Yes  
Wet space: No  
Addition: No  
Conversion: No

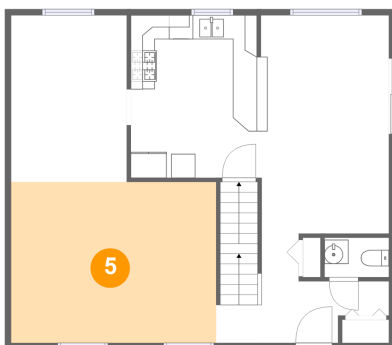
## 4 Floor 2 - Kitchen



Dimensions: 10'10" x 13'6"  
Area: 145 sq. ft  
Counted as living area: Yes

Heated: Yes  
Finished: Yes  
Enclosed: Yes  
Contiguous: Yes  
Permitted: Yes  
Wet space: No  
Addition: No  
Conversion: No

## 5 Floor 2 - Living Room

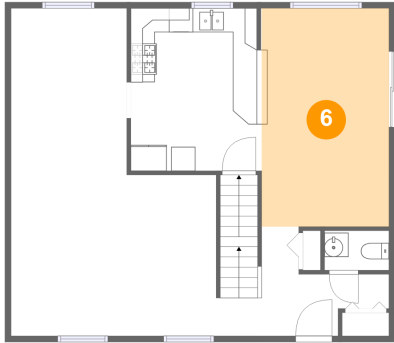


Dimensions: 17'0" x 13'4"  
Area: 227 sq. ft  
Counted as living area: Yes

Heated: Yes  
Finished: Yes  
Enclosed: Yes  
Contiguous: Yes  
Permitted: Yes  
Wet space: No  
Addition: No  
Conversion: No

# 247 Peakview Drive, Henrietta, Monroe County, New York, United States, 14467

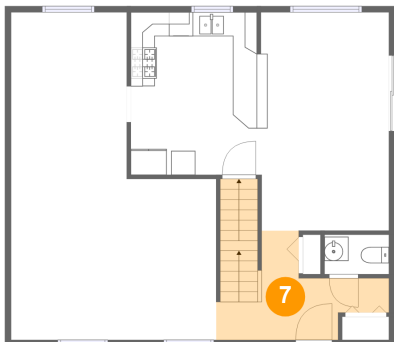
## 6 Floor 2 - Family Room



Dimensions: 10'7" x 18'1"  
Area: 191 sq. ft  
Counted as living area: Yes

Heated: Yes  
Finished: Yes  
Enclosed: Yes  
Contiguous: Yes  
Permitted: Yes  
Wet space: No  
Addition: No  
Conversion: No

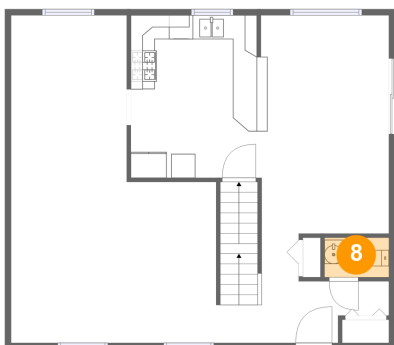
## 7 Floor 2 - Foyer



Dimensions: 14'4" x 9'1"  
Area: 101 sq. ft  
Counted as living area: Yes

Heated: Yes  
Finished: Yes  
Enclosed: Yes  
Contiguous: Yes  
Permitted: Yes  
Wet space: No  
Addition: No  
Conversion: No

## 8 Floor 2 - WC

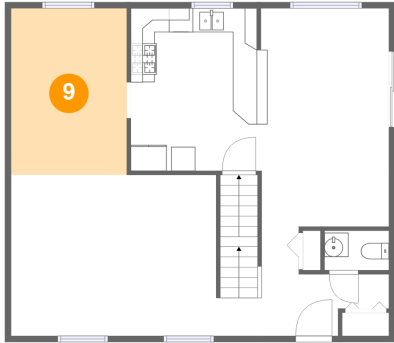


Dimensions: 5'4" x 3'3"  
Area: 18 sq. ft  
Counted as living area: Yes

Heated: Yes  
Finished: Yes  
Enclosed: Yes  
Contiguous: Yes  
Permitted: Yes  
Wet space: Yes  
Addition: No  
Conversion: No

# 247 Peakview Drive, Henrietta, Monroe County, New York, United States, 14467

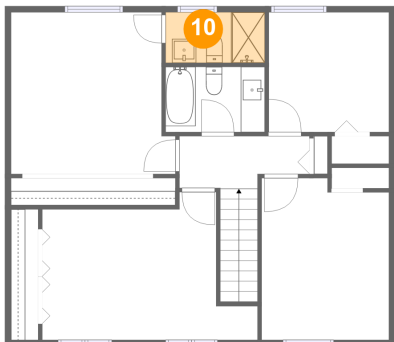
## 9 Floor 2 - Dining Area



Dimensions: 9'7" x 13'10"  
Area: 133 sq. ft  
Counted as living area: Yes

Heated: Yes  
Finished: Yes  
Enclosed: Yes  
Contiguous: Yes  
Permitted: Yes  
Wet space: No  
Addition: No  
Conversion: No

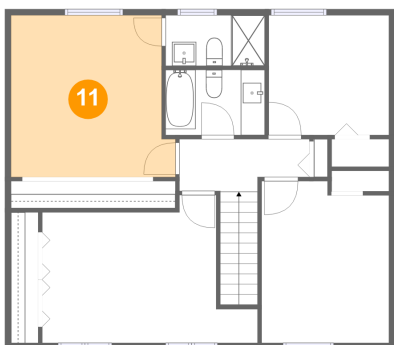
## 10 Floor 3 - Bath



Dimensions: 8'3" x 4'2"  
Area: 34 sq. ft  
Counted as living area: Yes

Heated: Yes  
Finished: Yes  
Enclosed: Yes  
Contiguous: Yes  
Permitted: Yes  
Wet space: Yes  
Addition: No  
Conversion: No

## 11 Floor 3 - Primary Bedroom



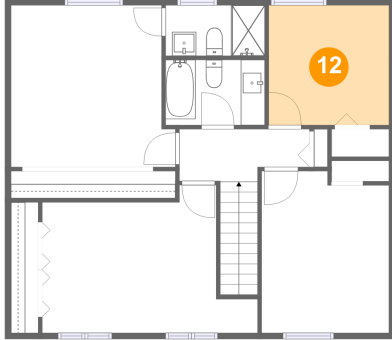
Dimensions: 13'8" x 13'5"  
Area: 171 sq. ft  
Counted as living area: Yes

Heated: Yes  
Finished: Yes  
Enclosed: Yes  
Contiguous: Yes  
Permitted: Yes  
Wet space: No  
Addition: No  
Conversion: No



# 247 Peakview Drive, Henrietta, Monroe County, New York, United States, 14467

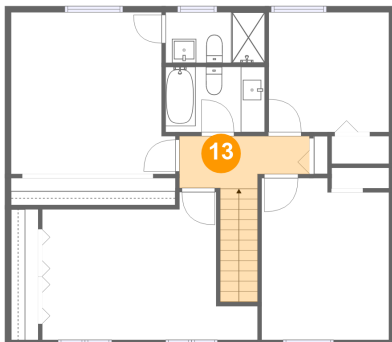
## 12 Floor 3 - Bedroom



Dimensions: 10'0" x 9'11"  
Area: 99 sq. ft  
Counted as living area: Yes

Heated: Yes  
Finished: Yes  
Enclosed: Yes  
Contiguous: Yes  
Permitted: Yes  
Wet space: No  
Addition: No  
Conversion: No

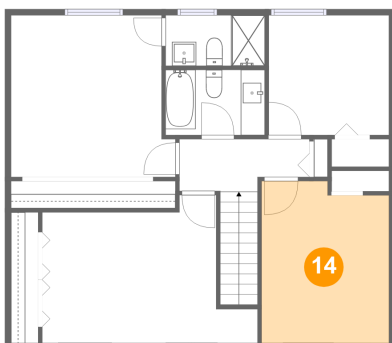
## 13 Floor 3 - Hall



Dimensions: 10'9" x 4'4"  
Area: 71 sq. ft  
Counted as living area: Yes

Heated: Yes  
Finished: Yes  
Enclosed: Yes  
Contiguous: Yes  
Permitted: Yes  
Wet space: No  
Addition: No  
Conversion: No

## 14 Floor 3 - Bedroom

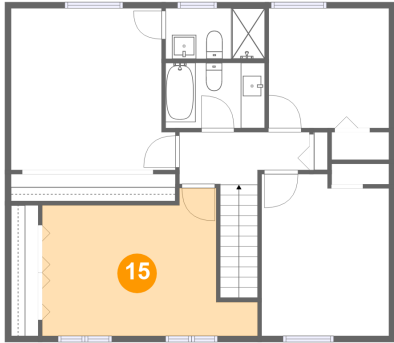


Dimensions: 10'6" x 13'5"  
Area: 136 sq. ft  
Counted as living area: Yes

Heated: Yes  
Finished: Yes  
Enclosed: Yes  
Contiguous: Yes  
Permitted: Yes  
Wet space: No  
Addition: No  
Conversion: No

**247 Peakview Drive, Henrietta, Monroe County, New York, United States, 14467**

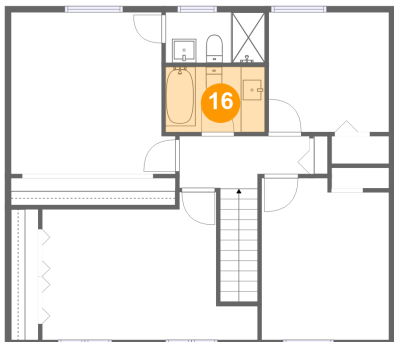
**15 Floor 3 - Bedroom**



Dimensions: 17'10" x 12'3"  
Area: 170 sq. ft  
Counted as living area: Yes

Heated: Yes  
Finished: Yes  
Enclosed: Yes  
Contiguous: Yes  
Permitted: Yes  
Wet space: No  
Addition: No  
Conversion: No

**16 Floor 3 - Bath**



Dimensions: 8'3" x 5'5"  
Area: 44 sq. ft  
Counted as living area: Yes

Heated: Yes  
Finished: Yes  
Enclosed: Yes  
Contiguous: Yes  
Permitted: Yes  
Wet space: Yes  
Addition: No  
Conversion: No