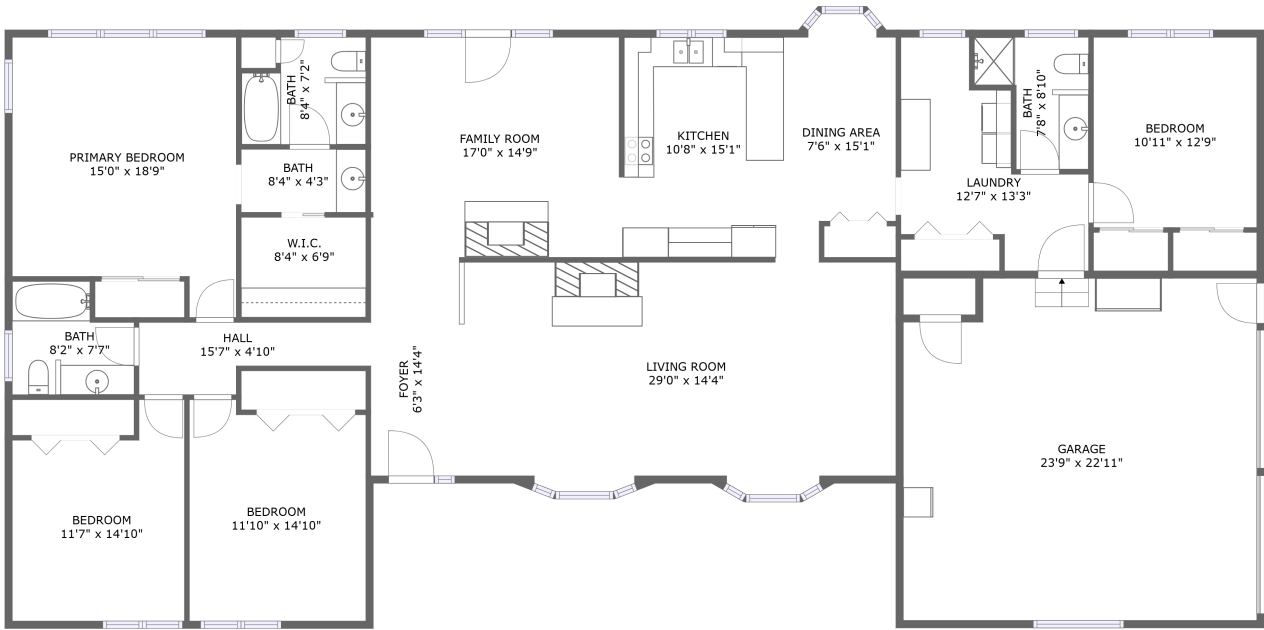


1846 S 1800 E,Gooding,ID,US



FLOOR 1

Property summary



1 Garages



4 Bedrooms



3 Bathrooms



0 Half baths



1 Floors



2,479
Gross living
area sqft



3,074
Total sqft

Home report

1846 S 1800 E,Gooding,ID,US



Room dimensions

Floor 1 Total sqft: 3074 Living area: 2479

#		Dimensions	sqft	Counted as living area
1	Living Room	29'0" x 14'4"	415 sq. ft	Yes
2	Dining Area	7'6" x 15'1"	100 sq. ft	Yes
3	Bath	7'8" x 8'10"	52 sq. ft	Yes
4	Foyer	6'3" x 14'4"	90 sq. ft	Yes
5	Bedroom	11'10" x 14'10"	167 sq. ft	Yes
6	Family Room	17'0" x 14'9"	253 sq. ft	Yes
7	Garage	23'9" x 22'11"	529 sq. ft	No
8	Bedroom	11'7" x 14'10"	148 sq. ft	Yes
9	Bath	8'4" x 4'3"	35 sq. ft	Yes
10	Primary Bedroom	15'0" x 18'9"	250 sq. ft	Yes
11	Bedroom	10'11" x 12'9"	140 sq. ft	Yes

1846 S 1800 E,Gooding,ID,US

#		Dimensions	sqft	Counted as living area
12	Bath	8'2" x 7'7"	54 sq. ft	Yes
13	Kitchen	10'8" x 15'1"	161 sq. ft	Yes
14	Hall	15'7" x 4'10"	58 sq. ft	Yes
15	W.I.C.	8'4" x 6'9"	56 sq. ft	Yes
16	Laundry	12'7" x 13'3"	123 sq. ft	Yes
17	Bath	8'4" x 7'2"	54 sq. ft	Yes

1846 S 1800 E,Gooding,ID,US

1 Floor 1 - Living Room



Dimensions: 29'0" x 14'4"
Area: 415 sq. ft
Counted as living area: Yes

Heated: Yes
Finished: Yes
Enclosed: Yes
Contiguous: Yes
Permitted: Yes
Wet space: No
Addition: No
Conversion: No

2 Floor 1 - Dining Area



Dimensions: 7'6" x 15'1"
Area: 100 sq. ft
Counted as living area: Yes

Heated: Yes
Finished: Yes
Enclosed: Yes
Contiguous: Yes
Permitted: Yes
Wet space: No
Addition: No
Conversion: No

1846 S 1800 E, Gooding, ID, US**3 Floor 1 - Bath**

Dimensions: 7'8" x 8'10"
Area: 52 sq. ft
Counted as living area: Yes

Heated: Yes
Finished: Yes
Enclosed: Yes
Contiguous: Yes
Permitted: Yes
Wet space: Yes
Addition: No
Conversion: No

4 Floor 1 - Foyer

Dimensions: 6'3" x 14'4"
Area: 90 sq. ft
Counted as living area: Yes

Heated: Yes
Finished: Yes
Enclosed: Yes
Contiguous: Yes
Permitted: Yes
Wet space: No
Addition: No
Conversion: No

5 Floor 1 - Bedroom

Dimensions: 11'10" x 14'10"
Area: 167 sq. ft
Counted as living area: Yes

Heated: Yes
Finished: Yes
Enclosed: Yes
Contiguous: Yes
Permitted: Yes
Wet space: No
Addition: No
Conversion: No

1846 S 1800 E, Gooding, ID, US**6 Floor 1 - Family Room**

Dimensions: 17'0" x 14'9"
Area: 253 sq. ft
Counted as living area: Yes

Heated: Yes
Finished: Yes
Enclosed: Yes
Contiguous: Yes
Permitted: Yes
Wet space: No
Addition: No
Conversion: No

7 Floor 1 - Garage

Dimensions: 23'9" x 22'11"
Area: 529 sq. ft
Counted as living area: No

Heated: No
Finished: No
Enclosed: Yes
Contiguous: Yes
Permitted: Yes
Wet space: No
Addition: No
Conversion: No

8 Floor 1 - Bedroom

Dimensions: 11'7" x 14'10"
Area: 148 sq. ft
Counted as living area: Yes

Heated: Yes
Finished: Yes
Enclosed: Yes
Contiguous: Yes
Permitted: Yes
Wet space: No
Addition: No
Conversion: No

1846 S 1800 E, Gooding, ID, US**9 Floor 1 - Bath**

Dimensions: 8'4" x 4'3"
Area: 35 sq. ft
Counted as living area: Yes

Heated: Yes
Finished: Yes
Enclosed: Yes
Contiguous: Yes
Permitted: Yes
Wet space: Yes
Addition: No
Conversion: No

10 Floor 1 - Primary Bedroom

Dimensions: 15'0" x 18'9"
Area: 250 sq. ft
Counted as living area: Yes

Heated: Yes
Finished: Yes
Enclosed: Yes
Contiguous: Yes
Permitted: Yes
Wet space: No
Addition: No
Conversion: No

11 Floor 1 - Bedroom

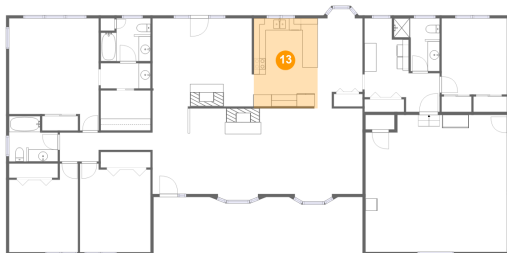
Dimensions: 10'11" x 12'9"
Area: 140 sq. ft
Counted as living area: Yes

Heated: Yes
Finished: Yes
Enclosed: Yes
Contiguous: Yes
Permitted: Yes
Wet space: No
Addition: No
Conversion: No

1846 S 1800 E, Gooding, ID, US**12 Floor 1 - Bath**

Dimensions: 8'2" x 7'7"
Area: 54 sq. ft
Counted as living area: Yes

Heated: Yes
Finished: Yes
Enclosed: Yes
Contiguous: Yes
Permitted: Yes
Wet space: Yes
Addition: No
Conversion: No

13 Floor 1 - Kitchen

Dimensions: 10'8" x 15'1"
Area: 161 sq. ft
Counted as living area: Yes

Heated: Yes
Finished: Yes
Enclosed: Yes
Contiguous: Yes
Permitted: Yes
Wet space: No
Addition: No
Conversion: No

14 Floor 1 - Hall

Dimensions: 15'7" x 4'10"
Area: 58 sq. ft
Counted as living area: Yes

Heated: Yes
Finished: Yes
Enclosed: Yes
Contiguous: Yes
Permitted: Yes
Wet space: No
Addition: No
Conversion: No

1846 S 1800 E,Gooding,ID,US**15 Floor 1 - W.I.C.**

Dimensions: 8'4" x 6'9"
Area: 56 sq. ft
Counted as living area: Yes

Heated: Yes
Finished: Yes
Enclosed: Yes
Contiguous: Yes
Permitted: Yes
Wet space: No
Addition: No
Conversion: No

16 Floor 1 - Laundry

Dimensions: 12'7" x 13'3"
Area: 123 sq. ft
Counted as living area: Yes

Heated: Yes
Finished: Yes
Enclosed: Yes
Contiguous: Yes
Permitted: Yes
Wet space: No
Addition: No
Conversion: No

17 Floor 1 - Bath

Dimensions: 8'4" x 7'2"
Area: 54 sq. ft
Counted as living area: Yes

Heated: Yes
Finished: Yes
Enclosed: Yes
Contiguous: Yes
Permitted: Yes
Wet space: Yes
Addition: No
Conversion: No