

Home report

5101 Winterwood Drive, League City, Texas 77573, United States



Total Area: 2074 sq. ft

Floor 1: 2074 sq. ft

Excluded: Low ceiling 341 sq. ft, Screened porch 208 sq. ft, Walls: 145 sq. ft

Property summary

1 Floors

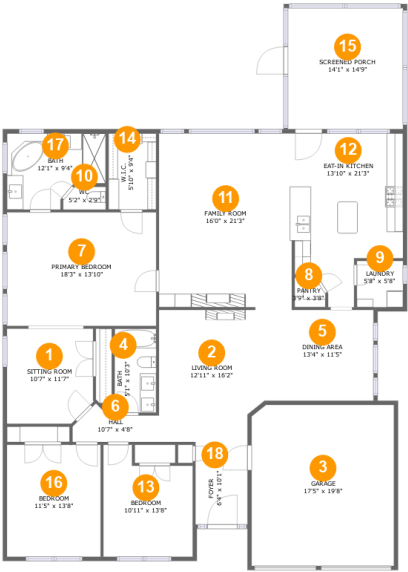
4 Bedrooms

2 Bathrooms

1 Garages

Home report

5101 Winterwood Drive, League City, Texas 77573, United States



Room dimensions

Floor 1 Total:2074sqft Excluded: 549sqft

#		Max Dimensions	sqft	Included
1	Sitting Room	10'7" x 11'7"	119 sq. ft	Yes
2	Living Room	12'11" x 16'2"	200 sq. ft	Yes
3	Garage	17'5" x 19'8"	341 sq. ft	No
4	Bath	5'1" x 10'3"	52 sq. ft	Yes
5	Dining Area	13'4" x 11'5"	149 sq. ft	Yes
6	Hall	10'7" x 4'8"	36 sq. ft	Yes
7	Primary Bedroom	18'3" x 13'10"	253 sq. ft	Yes
8	Pantry	3'9" x 3'8"	12 sq. ft	Yes
9	Laundry	5'8" x 5'8"	32 sq. ft	Yes
10	WC	5'2" x 2'9"	13 sq. ft	Yes
11	Family Room	16'0" x 21'3"	340 sq. ft	Yes

Home report

5101 Winterwood Drive, League City, Texas 77573, United States

#		Max Dimensions	sqft	Included
12	Eat-in Kitchen	13'10" x 21'3"	240 sq. ft	Yes
13	Bedroom	10'11" x 13'8"	130 sq. ft	Yes
14	W.I.C.	5'10" x 9'4"	54 sq. ft	Yes
15	Screened Porch	14'1" x 14'9"	208 sq. ft	No
16	Bedroom	11'5" x 13'8"	156 sq. ft	Yes
17	Bath	12'1" x 9'4"	97 sq. ft	Yes
18	Foyer	6'4" x 10'1"	64 sq. ft	Yes

5101 Winterwood Drive, League City, Texas 77573, United States

1 Floor 1 - Sitting Room



Max Dimensions: 10'7" x 11'7"
Calculated Area: 119 sq. ft
Included: Yes

Heated: Yes
Finished: Yes
Enclosed: Yes
Contiguous: Yes
Permitted: Yes
Wet space: No
Addition: No
Conversion: No

2 Floor 1 - Living Room



Max Dimensions: 12'11" x 16'2"
Calculated Area: 200 sq. ft
Included: Yes

Heated: Yes
Finished: Yes
Enclosed: Yes
Contiguous: Yes
Permitted: Yes
Wet space: No
Addition: No
Conversion: No

5101 Winterwood Drive, League City, Texas 77573, United States

3 Floor 1 - Garage



Max Dimensions: 17'5" x 19'8"
Calculated Area: 341 sq. ft
Included: No

Heated: No
Finished: No
Enclosed: Yes
Contiguous: Yes
Permitted: Yes
Wet space: No
Addition: No
Conversion: No

4 Floor 1 - Bath



Max Dimensions: 5'1" x 10'3"
Calculated Area: 52 sq. ft
Included: Yes

Heated: Yes
Finished: Yes
Enclosed: Yes
Contiguous: Yes
Permitted: Yes
Wet space: Yes
Addition: No
Conversion: No

5 Floor 1 - Dining Area



Max Dimensions: 13'4" x 11'5"
Calculated Area: 149 sq. ft
Included: Yes

Heated: Yes
Finished: Yes
Enclosed: Yes
Contiguous: Yes
Permitted: Yes
Wet space: No
Addition: No
Conversion: No

5101 Winterwood Drive, League City, Texas 77573, United States

6 Floor 1 - Hall



Max Dimensions: 10'7" x 4'8"
Calculated Area: 36 sq. ft
Included: Yes

Heated: Yes
Finished: Yes
Enclosed: Yes
Contiguous: Yes
Permitted: Yes
Wet space: No
Addition: No
Conversion: No

7 Floor 1 - Primary Bedroom



Max Dimensions: 18'3" x 13'10"
Calculated Area: 253 sq. ft
Included: Yes

Heated: Yes
Finished: Yes
Enclosed: Yes
Contiguous: Yes
Permitted: Yes
Wet space: No
Addition: No
Conversion: No

8 Floor 1 - Pantry



Max Dimensions: 3'9" x 3'8"
Calculated Area: 12 sq. ft
Included: Yes

Heated: Yes
Finished: Yes
Enclosed: Yes
Contiguous: Yes
Permitted: Yes
Wet space: No
Addition: No
Conversion: No

9 Floor 1 - Laundry



Max Dimensions: 5'8" x 5'8"
Calculated Area: 32 sq. ft
Included: Yes

Heated: Yes
Finished: Yes
Enclosed: Yes
Contiguous: Yes
Permitted: Yes
Wet space: No
Addition: No
Conversion: No

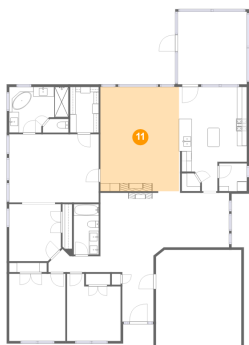
10 Floor 1 - WC



Max Dimensions: 5'2" x 2'9"
Calculated Area: 13 sq. ft
Included: Yes

Heated: Yes
Finished: Yes
Enclosed: Yes
Contiguous: Yes
Permitted: Yes
Wet space: No
Addition: No
Conversion: No

11 Floor 1 - Family Room



Max Dimensions: 16'0" x 21'3"
Calculated Area: 340 sq. ft
Included: Yes

Heated: Yes
Finished: Yes
Enclosed: Yes
Contiguous: Yes
Permitted: Yes
Wet space: No
Addition: No
Conversion: No

12 Floor 1 - Eat-in Kitchen



Max Dimensions: 13'10" x 21'3"
Calculated Area: 240 sq. ft
Included: Yes

Heated: Yes
Finished: Yes
Enclosed: Yes
Contiguous: Yes
Permitted: Yes
Wet space: No
Addition: No
Conversion: No

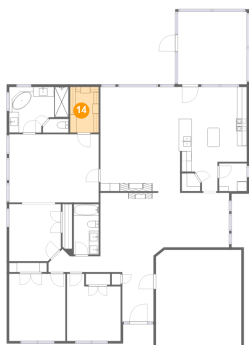
13 Floor 1 - Bedroom



Max Dimensions: 10'11" x 13'8"
Calculated Area: 130 sq. ft
Included: Yes

Heated: Yes
Finished: Yes
Enclosed: Yes
Contiguous: Yes
Permitted: Yes
Wet space: No
Addition: No
Conversion: No

14 Floor 1 - W.I.C.



Max Dimensions: 5'10" x 9'4"
Calculated Area: 54 sq. ft
Included: Yes

Heated: Yes
Finished: Yes
Enclosed: Yes
Contiguous: Yes
Permitted: Yes
Wet space: No
Addition: No
Conversion: No

15 Floor 1 - Screened Porch



Max Dimensions: 14'1" x 14'9"
Calculated Area: 208 sq. ft
Included: No

Heated: No
Finished: Yes
Enclosed: No
Contiguous: Yes
Permitted: Yes
Wet space: No
Addition: No
Conversion: No

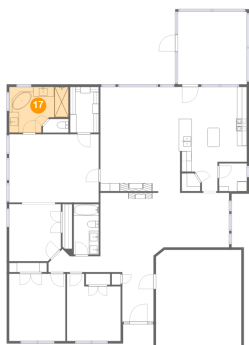
16 Floor 1 - Bedroom



Max Dimensions: 11'5" x 13'8"
Calculated Area: 156 sq. ft
Included: Yes

Heated: Yes
Finished: Yes
Enclosed: Yes
Contiguous: Yes
Permitted: Yes
Wet space: No
Addition: No
Conversion: No

17 Floor 1 - Bath



Max Dimensions: 12'1" x 9'4"
Calculated Area: 97 sq. ft
Included: Yes

Heated: Yes
Finished: Yes
Enclosed: Yes
Contiguous: Yes
Permitted: Yes
Wet space: Yes
Addition: No
Conversion: No

5101 Winterwood Drive, League City, Texas 77573, United States

18 Floor 1 - Foyer



Max Dimensions: 6'4" x 10'1"
Calculated Area: 64 sq. ft
Included: Yes

Heated: Yes
Finished: Yes
Enclosed: Yes
Contiguous: Yes
Permitted: Yes
Wet space: No
Addition: No
Conversion: No