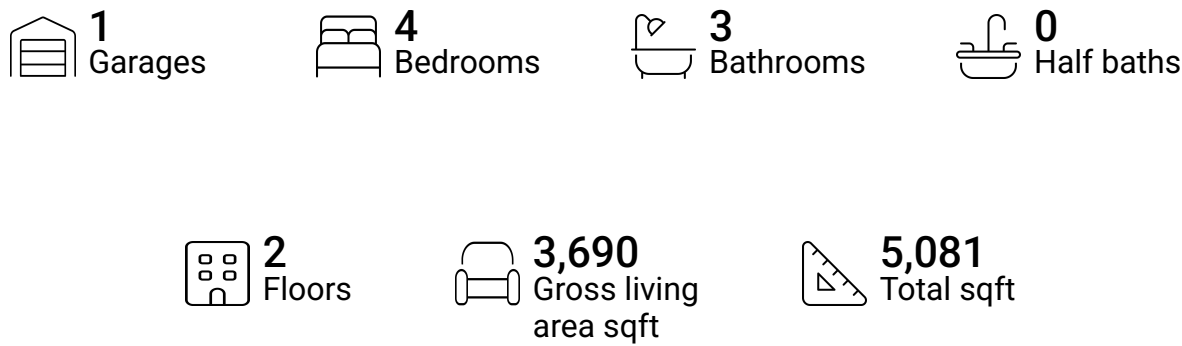


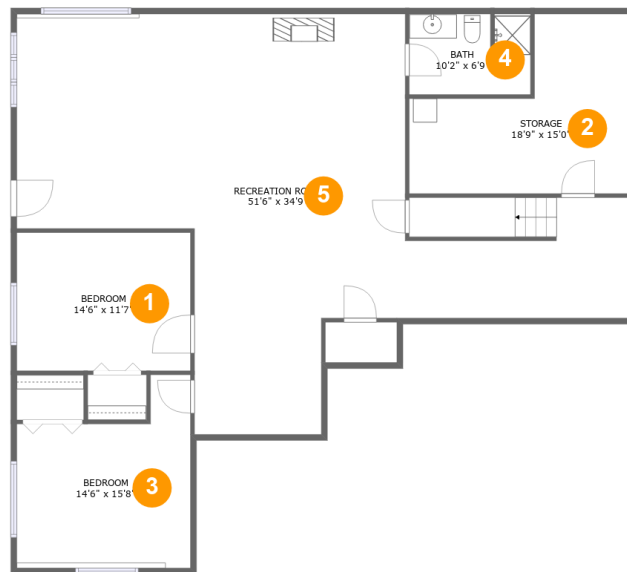
100 Waterside Drive, The Waterfront, Moneta,
Franklin County, Virginia, United States, 24121



Property summary



100 Waterside Drive, The Waterfront, Moneta, Franklin County, Virginia, United States, 24121



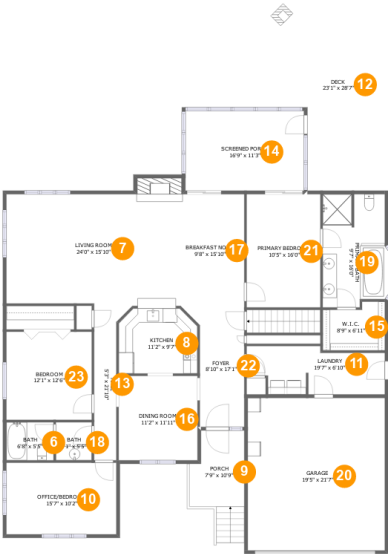
Room dimensions

Floor 1

Total sqft: 1840 Living area: 1621

#		Dimensions	sqft	Counted as living area
1	Bedroom	14'6" x 11'7"	168 sq. ft	Yes
2	Storage	18'9" x 15'0"	207 sq. ft	No
3	Bedroom	14'6" x 15'8"	188 sq. ft	Yes
4	Bath	10'2" x 6'9"	67 sq. ft	Yes
5	Recreation Room	51'6" x 34'9"	1003 sq. ft	Yes

100 Waterside Drive, The Waterfront, Moneta,
Franklin County, Virginia, United States, 24121



Room dimensions

Floor 2Total sqft: 3241 Living area: 2069

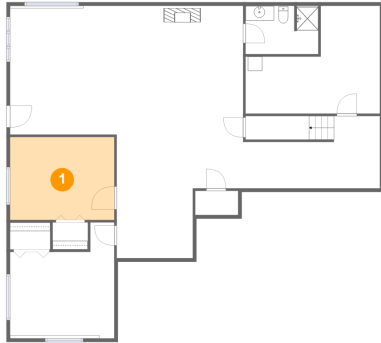
#		Dimensions	sqft	Counted as living area
6	Bath	6'8" x 5'5"	36 sq. ft	Yes
7	Living Room	24'0" x 15'10"	388 sq. ft	Yes
8	Kitchen	11'2" x 9'7"	99 sq. ft	Yes
9	Porch	7'9" x 10'9"	96 sq. ft	No
10	OFFICE/BEDROOM	15'7" x 10'2"	158 sq. ft	Yes
11	Laundry	19'7" x 6'10"	116 sq. ft	Yes
12	Deck	23'1" x 28'7"	404 sq. ft	No
13	Hall	5'3" x 21'10"	71 sq. ft	Yes
14	Screened Porch	16'9" x 11'3"	189 sq. ft	No
15	W.I.C.	8'9" x 6'11"	54 sq. ft	Yes
16	Dining Room	11'2" x 11'11"	133 sq. ft	Yes

**100 Waterside Drive, The Waterfront, Moneta,
Franklin County, Virginia, United States, 24121**

#		Dimensions	sqft	Counted as living area
17	Breakfast Nook	9'8" x 15'10"	155 sq. ft	Yes
18	Bath	5'1" x 5'5"	27 sq. ft	Yes
19	Primary Bath	9'7" x 16'0"	140 sq. ft	Yes
20	Garage	19'5" x 21'7"	418 sq. ft	No
21	Primary Bedroom	10'5" x 16'0"	167 sq. ft	Yes
22	Foyer	8'10" x 17'1"	111 sq. ft	Yes
23	Bedroom	12'1" x 12'6"	150 sq. ft	Yes

**100 Waterside Drive, The Waterfront, Moneta,
Franklin County, Virginia, United States, 24121**

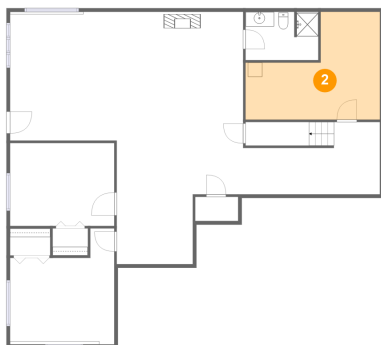
1 Floor 1 - Bedroom



Dimensions: 14'6" x 11'7"
Area: 168 sq. ft
Counted as living area: Yes

Heated: Yes
Finished: Yes
Enclosed: Yes
Contiguous: Yes
Permitted: Yes
Wet space: No
Addition: No
Conversion: No

2 Floor 1 - Storage

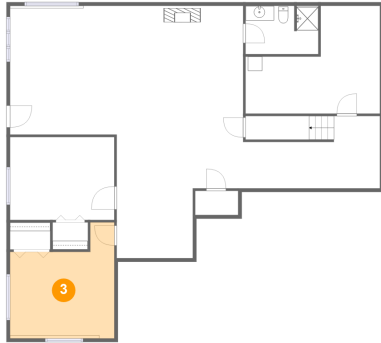


Dimensions: 18'9" x 15'0"
Area: 207 sq. ft
Counted as living area: No

Heated: No
Finished: No
Enclosed: No
Contiguous: Yes
Permitted: Yes
Wet space: No
Addition: No
Conversion: No

100 Waterside Drive, The Waterfront, Moneta,
Franklin County, Virginia, United States, 24121

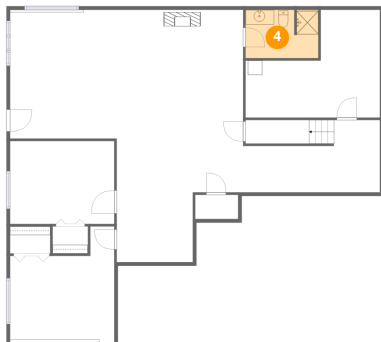
3 Floor 1 - Bedroom



Dimensions: 14'6" x 15'8"
Area: 188 sq. ft
Counted as living area: Yes

Heated: Yes
Finished: Yes
Enclosed: Yes
Contiguous: Yes
Permitted: Yes
Wet space: No
Addition: No
Conversion: No

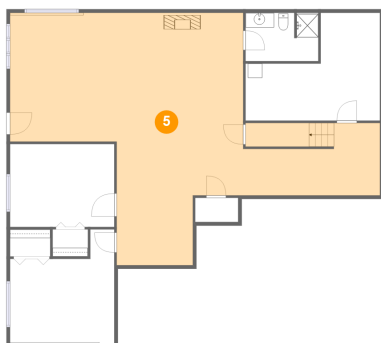
4 Floor 1 - Bath



Dimensions: 10'2" x 6'9"
Area: 67 sq. ft
Counted as living area: Yes

Heated: Yes
Finished: Yes
Enclosed: Yes
Contiguous: Yes
Permitted: Yes
Wet space: Yes
Addition: No
Conversion: No

5 Floor 1 - Recreation Room

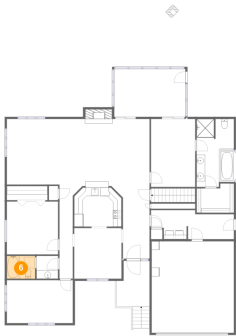


Dimensions: 51'6" x 34'9"
Area: 1003 sq. ft
Counted as living area: Yes

Heated: Yes
Finished: Yes
Enclosed: Yes
Contiguous: Yes
Permitted: Yes
Wet space: No
Addition: No
Conversion: No

100 Waterside Drive, The Waterfront, Moneta,
Franklin County, Virginia, United States, 24121

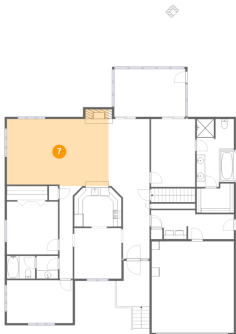
6 Floor 2 - Bath



Dimensions: 6'8" x 5'5"
Area: 36 sq. ft
Counted as living area: Yes

Heated: Yes
Finished: Yes
Enclosed: Yes
Contiguous: Yes
Permitted: Yes
Wet space: Yes
Addition: No
Conversion: No

7 Floor 2 - Living Room



Dimensions: 24'0" x 15'10"
Area: 388 sq. ft
Counted as living area: Yes

Heated: Yes
Finished: Yes
Enclosed: Yes
Contiguous: Yes
Permitted: Yes
Wet space: No
Addition: No
Conversion: No

8 Floor 2 - Kitchen



Dimensions: 11'2" x 9'7"
Area: 99 sq. ft
Counted as living area: Yes

Heated: Yes
Finished: Yes
Enclosed: Yes
Contiguous: Yes
Permitted: Yes
Wet space: No
Addition: No
Conversion: No

100 Waterside Drive, The Waterfront, Moneta,
Franklin County, Virginia, United States, 24121

9 Floor 2 - Porch



Dimensions: 7'9" x 10'9"
Area: 96 sq. ft
Counted as living area: No

Heated: No
Finished: Yes
Enclosed: No
Contiguous: Yes
Permitted: Yes
Wet space: No
Addition: No
Conversion: No

10 Floor 2 - OFFICE/BEDROOM



Dimensions: 15'7" x 10'2"
Area: 158 sq. ft
Counted as living area: Yes

Heated: Yes
Finished: Yes
Enclosed: Yes
Contiguous: Yes
Permitted: Yes
Wet space: No
Addition: No
Conversion: No

11 Floor 2 - Laundry

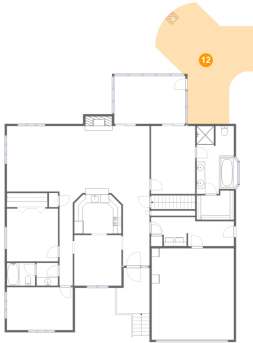


Dimensions: 19'7" x 6'10"
Area: 116 sq. ft
Counted as living area: Yes

Heated: Yes
Finished: Yes
Enclosed: Yes
Contiguous: Yes
Permitted: Yes
Wet space: No
Addition: No
Conversion: No

100 Waterside Drive, The Waterfront, Moneta,
Franklin County, Virginia, United States, 24121

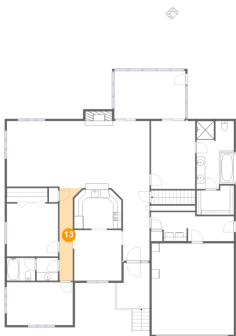
12 Floor 2 - Deck



Dimensions: 23'1" x 28'7"
Area: 404 sq. ft
Counted as living area: No

Heated: No
Finished: Yes
Enclosed: No
Contiguous: Yes
Permitted: Yes
Wet space: No
Addition: No
Conversion: No

13 Floor 2 - Hall



Dimensions: 5'3" x 21'10"
Area: 71 sq. ft
Counted as living area: Yes

Heated: Yes
Finished: Yes
Enclosed: Yes
Contiguous: Yes
Permitted: Yes
Wet space: No
Addition: No
Conversion: No

14 Floor 2 - Screened Porch

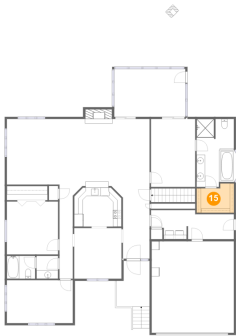


Dimensions: 16'9" x 11'3"
Area: 189 sq. ft
Counted as living area: No

Heated: No
Finished: Yes
Enclosed: No
Contiguous: Yes
Permitted: Yes
Wet space: No
Addition: No
Conversion: No

100 Waterside Drive, The Waterfront, Moneta,
Franklin County, Virginia, United States, 24121

15 Floor 2 - W.I.C.



Dimensions: 8'9" x 6'11"
Area: 54 sq. ft
Counted as living area: Yes

Heated: Yes
Finished: Yes
Enclosed: Yes
Contiguous: Yes
Permitted: Yes
Wet space: No
Addition: No
Conversion: No

16 Floor 2 - Dining Room



Dimensions: 11'2" x 11'11"
Area: 133 sq. ft
Counted as living area: Yes

Heated: Yes
Finished: Yes
Enclosed: Yes
Contiguous: Yes
Permitted: Yes
Wet space: No
Addition: No
Conversion: No

17 Floor 2 - Breakfast Nook



Dimensions: 9'8" x 15'10"
Area: 155 sq. ft
Counted as living area: Yes

Heated: Yes
Finished: Yes
Enclosed: Yes
Contiguous: Yes
Permitted: Yes
Wet space: No
Addition: No
Conversion: No

100 Waterside Drive, The Waterfront, Moneta,
Franklin County, Virginia, United States, 24121

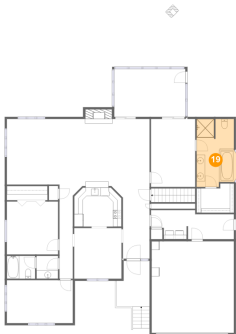
18 Floor 2 - Bath



Dimensions: 5'1" x 5'5"
Area: 27 sq. ft
Counted as living area: Yes

Heated: Yes
Finished: Yes
Enclosed: Yes
Contiguous: Yes
Permitted: Yes
Wet space: Yes
Addition: No
Conversion: No

19 Floor 2 - Primary Bath



Dimensions: 9'7" x 16'0"
Area: 140 sq. ft
Counted as living area: Yes

Heated: Yes
Finished: Yes
Enclosed: Yes
Contiguous: Yes
Permitted: Yes
Wet space: Yes
Addition: No
Conversion: No

20 Floor 2 - Garage



Dimensions: 19'5" x 21'7"
Area: 418 sq. ft
Counted as living area: No

Heated: No
Finished: No
Enclosed: Yes
Contiguous: Yes
Permitted: Yes
Wet space: No
Addition: No
Conversion: No

100 Waterside Drive, The Waterfront, Moneta,
Franklin County, Virginia, United States, 24121

21 Floor 2 - Primary Bedroom



Dimensions: 10'5" x 16'0"
Area: 167 sq. ft
Counted as living area: Yes

Heated: Yes
Finished: Yes
Enclosed: Yes
Contiguous: Yes
Permitted: Yes
Wet space: No
Addition: No
Conversion: No

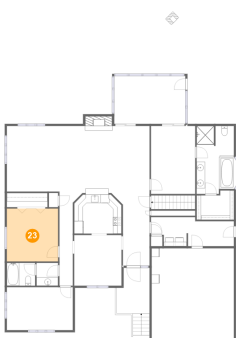
22 Floor 2 - Foyer



Dimensions: 8'10" x 17'1"
Area: 111 sq. ft
Counted as living area: Yes

Heated: Yes
Finished: Yes
Enclosed: Yes
Contiguous: Yes
Permitted: Yes
Wet space: No
Addition: No
Conversion: No

23 Floor 2 - Bedroom



Dimensions: 12'1" x 12'6"
Area: 150 sq. ft
Counted as living area: Yes

Heated: Yes
Finished: Yes
Enclosed: Yes
Contiguous: Yes
Permitted: Yes
Wet space: No
Addition: No
Conversion: No