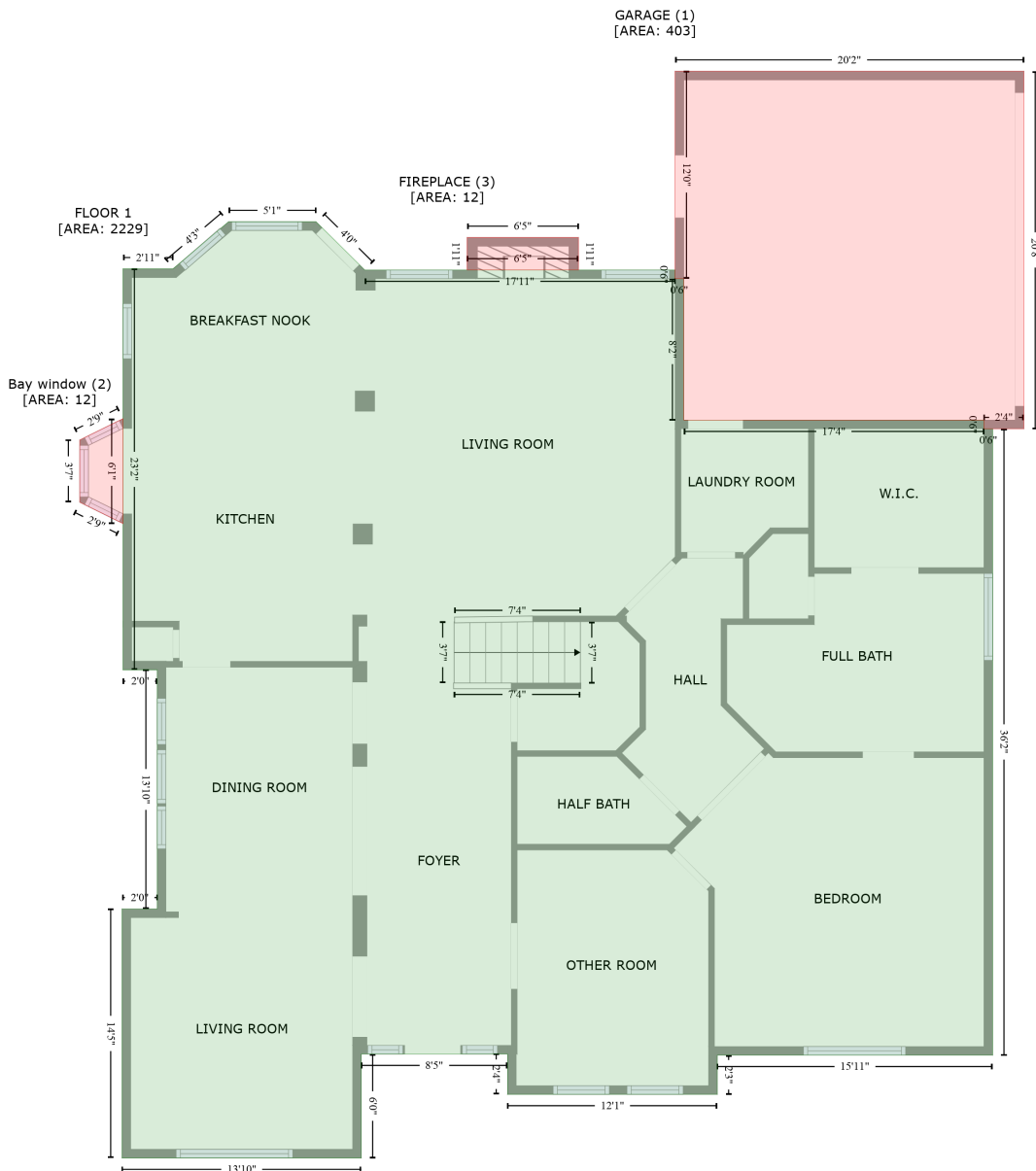


# 3333 Camden Drive, Glenwick Estates, Flower Mound, Denton County, Texas, United States, 75028

Gross Living Area: 3571 sq. ft



Space	Area (sq. ft)	Calculation <small>Coordinate Polygon Area Algorithm using inches</small>
FLOOR 1 (Living area)	2229	$  \begin{aligned}  & -((153.6 + 187.5) * (101.5 - 134.9) + (187.5 + 402.8) * (134.9 - 134.9) + (402.8 + 402.8) * (134.9 - 140.9) \\  & + (402.8 + 408.8) * (140.9 - 140.9) + (408.8 + 408.8) * (140.9 - 239) + (408.8 + 616.9) * (239 - 239) \\  & + (616.9 + 616.9) * (239 - 245) + (616.9 + 622.9) * (245 - 245) + (622.9 + 622.9) * (245 - 679.2) \\  & + (622.9 + 432) * (679.2 - 679.2) + (432 + 432) * (679.2 - 706.4) + (432 + 286.5) * (706.4 - 706.4) \\  & + (286.5 + 286.5) * (706.4 - 678.4) + (286.5 + 185.1) * (678.4 - 678.4) + (185.1 + 185.1) * (678.4 - 750.5) \\  & + (185.1 + 19.2) * (750.5 - 750.5) + (19.2 + 19.2) * (750.5 - 577.9) + (19.2 + 43.6) * (577.9 - 577.9) \\  & + (43.6 + 43.6) * (577.9 - 412.1) + (43.6 + 19.9) * (412.1 - 412.1) + (19.9  \end{aligned}  $

# 3333 Camden Drive, Glenwick Estates, Flower Mound, Denton County, Texas, United States, 75028

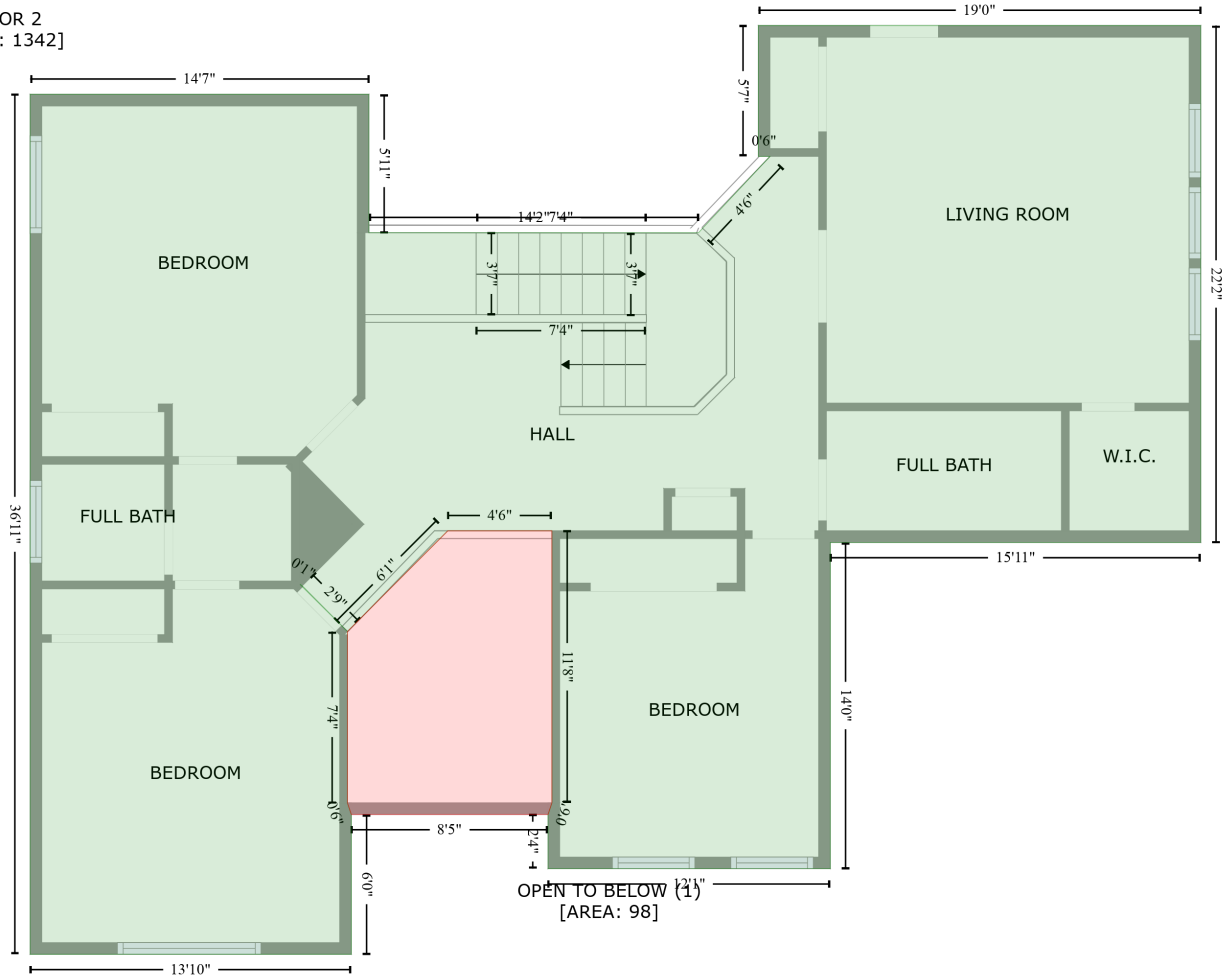
Gross Living Area: 3571 sq. ft

Space	Area (sq. ft)	Calculation <small>Coordinate Polygon Area Algorithm using inches</small>
		$+ 19.9 * (412.1 - 134.2) + (19.9 + 54.5) * (134.2 - 134.2) + (54.5 + 93.1) * (134.2 - 101.5) + (93.1 + 153.6) * (101.5 - 101.5)) * 0.5 * 0.00694$
GARAGE (Non-living area)	403	$-((644.6 + 644.6) * (-2.9 - 245) + (644.6 + 616.9) * (245 - 245) + (616.9 + 616.9) * (245 - 239) + (616.9 + 408.8) * (239 - 239) + (408.8 + 408.8) * (239 - 140.9) + (408.8 + 402.8) * (140.9 - 140.9) + (402.8 + 402.8) * (140.9 - -2.9) + (402.8 + 644.6) * (-2.9 - -2.9)) * 0.5 * 0.00694$
Bay window (Non-living area)	12	$-((19.9 + 19.9) * (238 - 310.7) + (19.9 + -10.1) * (310.7 - 295.9) + (-10.1 + -10.1) * (295.9 - 252.8) + (-10.1 + 19.9) * (252.8 - 238)) * 0.5 * 0.00694$
FIREPLACE (Non-living area)	12	$-((335.7 + 335.7) * (112.4 - 134.9) + (335.7 + 258.5) * (134.9 - 134.9) + (258.5 + 258.5) * (134.9 - 112.4) + (258.5 + 335.7) * (112.4 - 112.4)) * 0.5 * 0.00694$

# 3333 Camden Drive, Glenwick Estates, Flower Mound, Denton County, Texas, United States, 75028

Gross Living Area: 3571 sq. ft

FLOOR 2  
[AREA: 1342]



Space	Area (sq. ft)	Calculation
FLOOR 2 (Living area)	1342	Coordinate Polygon Area Algorithm using inches $-((622.9 + 622.9) * (272 - 538.3) + (622.9 + 432) * (538.3 - 538.3) + (432 + 432) * (538.3 - 706.4) + (432 + 286.5) * (706.4 - 706.4) + (286.5 + 286.5) * (706.4 - 678.4) + (286.5 + 288.5) * (678.4 - 672.4) + (288.5 + 288.5) * (672.4 - 532.3) + (288.5 + 234.9) * (532.3 - 532.3) + (234.9 + 183.1) * (532.3 - 584.2) + (183.1 + 159.8) * (584.2 - 560.6) + (159.8 + 158.7) * (560.6 - 559.8) + (158.7 + 183.1) * (559.8 - 584.2) + (183.1 + 183.1) * (584.2 - 672.4) + (183.1 + 185.1) * (672.4 - 678.4) + (185.1 + 185.1) * (678.4 - 750.5) + (185.1 + 19.6) * (750.5 - 750.5) + (19.6 + 19.6) * (750.5 - 307.4) + (19.6 + 194.2) * (307.4 - 307.4) + (194.2 + 194.2) * (307.4 - 378.7) + (194.2 + 364.1) * (378.7 - 378.7) + (364.1 + 400.9) * (378.7 - 339.4) + (400.9 + 394.9) * (339.4 - 339.4) + (394.9 + 394.9) * (339.4 - 272) + (394.9 + 622.9) * (272 - 272)) * 0.5 * 0.00694$
OPEN TO BELOW (Non-living area)	98	$-((288.5 + 288.5) * (532.3 - 672.4) + (288.5 + 286.5) * (672.4 - 678.4) + (286.5 + 185.1) * (678.4 - 678.4) + (185.1 + 183.1) * (678.4 - 672.4) + (183.1 + 183.1) * (672.4 - 584.2) + (183.1 + 234.9) * (584.2 - 532.3) + (234.9 + 288.5) * (532.3 - 532.3)) * 0.5 * 0.00694$