

505 Princess Dr, Elizabeth, PA, US




Property summary


 **1** Garages

 **4** Bedrooms

 **3** Bathrooms

 **2** Half baths

 **3** Floors

 **3,137** Gross living area sqft

 **7,753** Total sqft

505 Princess Dr, Elizabeth, PA, US**Room dimensions**

Floor 1

Total sqft: 1835 Living area: 871

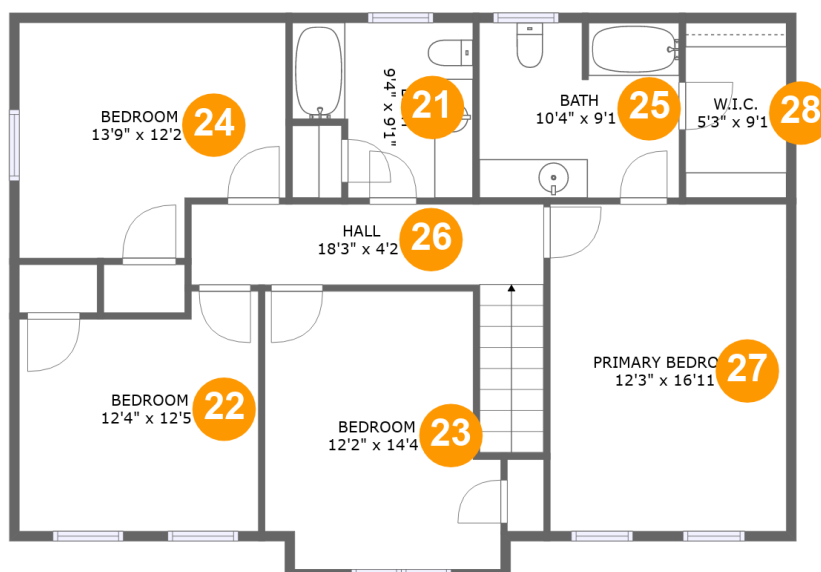
#		Dimensions	sqft	Counted as living area
1	Room	6'0" x 8'2"	49 sq. ft	No
2	Room	15'10" x 11'3"	167 sq. ft	Yes
3	WC	6'0" x 5'6"	37 sq. ft	No
4	Utility	9'6" x 17'8"	149 sq. ft	No
5	Wet Bar	6'4" x 9'6"	60 sq. ft	Yes
6	Garage	26'5" x 25'3"	666 sq. ft	No
7	Recreation Room	23'5" x 26'3"	556 sq. ft	Yes

505 Princess Dr, Elizabeth, PA, US**Room dimensions****Floor 2****Total sqft: 4786 Living area: 1134**

#		Dimensions	sqft	Counted as living area
8	Kitchen	12'6" x 12'10"	146 sq. ft	Yes
9	Patio	68'4" x 57'2"	2960 sq. ft	No
10	Bath	9'11" x 6'9"	67 sq. ft	No
11	Swimming Pool	35'6" x 19'3"	770 sq. ft	No
12	Attic	26'5" x 25'3"	191 sq. ft	No
13	Room	13'11" x 13'1"	182 sq. ft	Yes
14	Foyer	12'11" x 15'1"	148 sq. ft	Yes
15	Covered Patio	27'11" x 14'10"	417 sq. ft	No
16	Electrical Room	9'11" x 11'7"	105 sq. ft	No
17	Dining Room	12'2" x 13'1"	160 sq. ft	Yes
18	Living Room	27'1" x 16'2"	368 sq. ft	Yes

505 Princess Dr,Elizabeth,PA,US

#		Dimensions	sqft	Counted as living area
19	Porch	11'2" x 3'6"	102 sq. ft	No
20	WC	4'8" x 5'6"	25 sq. ft	Yes

505 Princess Dr, Elizabeth, PA, US**Room dimensions**

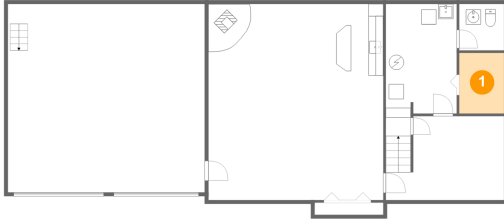
Floor 3

Total sqft: 1132 Living area: 1132

#		Dimensions	sqft	Counted as living area
21	Bath	9'4" x 9'1"	73 sq. ft	Yes
22	Bedroom	12'4" x 12'5"	141 sq. ft	Yes
23	Bedroom	12'2" x 14'4"	160 sq. ft	Yes
24	Bedroom	13'9" x 12'2"	151 sq. ft	Yes
25	Bath	10'4" x 9'1"	92 sq. ft	Yes
26	Hall	18'3" x 4'2"	105 sq. ft	Yes
27	Primary Bedroom	12'3" x 16'11"	206 sq. ft	Yes
28	W.I.C.	5'3" x 9'1"	47 sq. ft	Yes

505 Princess Dr, Elizabeth, PA, US

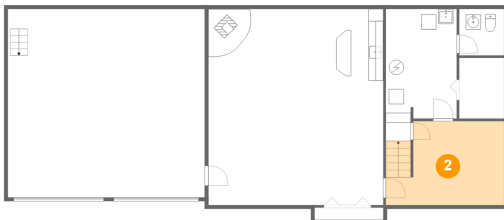
1 Floor 1 - Room



Dimensions: 6'0" x 8'2"
Area: 49 sq. ft
Counted as living area: No

Heated: Yes
Finished: No
Enclosed: Yes
Contiguous: Yes
Permitted: Yes
Wet space: No
Addition: No
Conversion: No

2 Floor 1 - Room

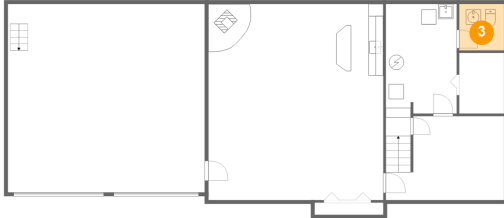


Dimensions: 15'10" x 11'3"
Area: 167 sq. ft
Counted as living area: Yes

Heated: Yes
Finished: Yes
Enclosed: Yes
Contiguous: Yes
Permitted: Yes
Wet space: No
Addition: No
Conversion: No

505 Princess Dr, Elizabeth, PA, US

3 Floor 1 - WC



Dimensions: 6'0" x 5'6"
Area: 37 sq. ft
Counted as living area: No

Heated: Yes
Finished: Yes
Enclosed: Yes
Contiguous: No
Permitted: Yes
Wet space: Yes
Addition: No
Conversion: No

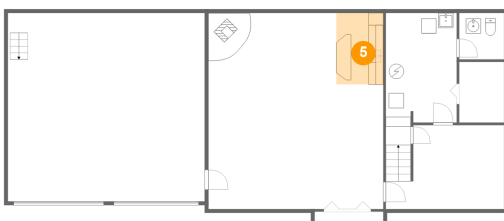
4 Floor 1 - Utility



Dimensions: 9'6" x 17'8"
Area: 149 sq. ft
Counted as living area: No

Heated: Yes
Finished: No
Enclosed: Yes
Contiguous: Yes
Permitted: Yes
Wet space: No
Addition: No
Conversion: No

5 Floor 1 - Wet Bar

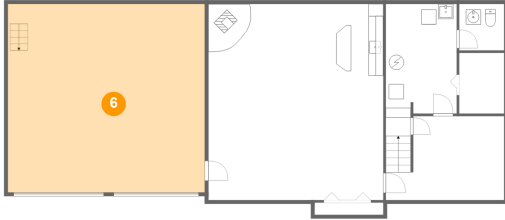


Dimensions: 6'4" x 9'6"
Area: 60 sq. ft
Counted as living area: Yes

Heated: Yes
Finished: Yes
Enclosed: Yes
Contiguous: Yes
Permitted: Yes
Wet space: No
Addition: No
Conversion: No

505 Princess Dr, Elizabeth, PA, US

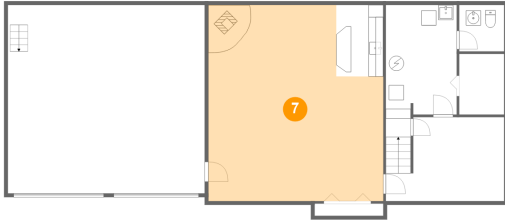
6 Floor 1 - Garage



Dimensions: 26'5" x 25'3"
Area: 666 sq. ft
Counted as living area: No

Heated: No
Finished: No
Enclosed: Yes
Contiguous: Yes
Permitted: Yes
Wet space: No
Addition: No
Conversion: No

7 Floor 1 - Recreation Room



Dimensions: 23'5" x 26'3"
Area: 556 sq. ft
Counted as living area: Yes

Heated: Yes
Finished: Yes
Enclosed: Yes
Contiguous: Yes
Permitted: Yes
Wet space: No
Addition: No
Conversion: No

8 Floor 2 - Kitchen

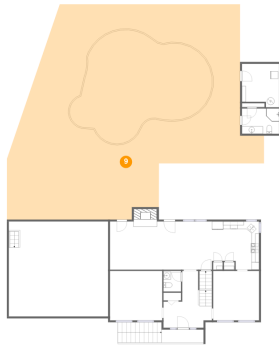


Dimensions: 12'6" x 12'10"
Area: 146 sq. ft
Counted as living area: Yes

Heated: Yes
Finished: Yes
Enclosed: Yes
Contiguous: Yes
Permitted: Yes
Wet space: No
Addition: No
Conversion: No

505 Princess Dr, Elizabeth, PA, US

9 Floor 2 - Patio



Dimensions: 68'4" x 57'2"
Area: 2960 sq. ft
Counted as living area: No

Heated: No
Finished: Yes
Enclosed: No
Contiguous: Yes
Permitted: Yes
Wet space: No
Addition: No
Conversion: No

10 Floor 2 - Bath



Dimensions: 9'11" x 6'9"
Area: 67 sq. ft
Counted as living area: No

Heated: Yes
Finished: Yes
Enclosed: Yes
Contiguous: No
Permitted: Yes
Wet space: Yes
Addition: No
Conversion: No

11 Floor 2 - Swimming Pool

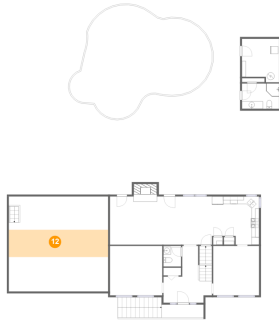


Dimensions: 35'6" x 19'3"
Area: 770 sq. ft
Counted as living area: No

Heated: No
Finished: No
Enclosed: No
Contiguous: Yes
Permitted: No
Wet space: No
Addition: No
Conversion: No

505 Princess Dr, Elizabeth, PA, US

12 Floor 2 - Attic



Dimensions: 26'5" x 25'3"
Area: 191 sq. ft
Counted as living area: No

Heated: No
Finished: No
Enclosed: Yes
Contiguous: Yes
Permitted: Yes
Wet space: No
Addition: No
Conversion: No

13 Floor 2 - Room



Dimensions: 13'11" x 13'1"
Area: 182 sq. ft
Counted as living area: Yes

Heated: Yes
Finished: Yes
Enclosed: Yes
Contiguous: Yes
Permitted: Yes
Wet space: No
Addition: No
Conversion: No

14 Floor 2 - Foyer



Dimensions: 12'11" x 15'1"
Area: 148 sq. ft
Counted as living area: Yes

Heated: Yes
Finished: Yes
Enclosed: Yes
Contiguous: Yes
Permitted: Yes
Wet space: No
Addition: No
Conversion: No

15 Floor 2 - Covered Patio



Dimensions: 27'11" x 14'10"
Area: 417 sq. ft
Counted as living area: No

Heated: No
Finished: Yes
Enclosed: No
Contiguous: Yes
Permitted: Yes
Wet space: No
Addition: No
Conversion: No

16 Floor 2 - Electrical Room



Dimensions: 9'11" x 11'7"
Area: 105 sq. ft
Counted as living area: No

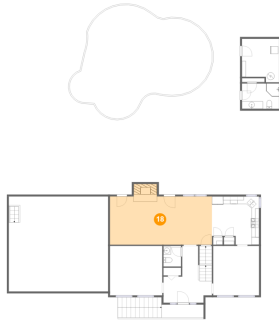
Heated: No
Finished: No
Enclosed: Yes
Contiguous: Yes
Permitted: Yes
Wet space: No
Addition: No
Conversion: No

17 Floor 2 - Dining Room



Dimensions: 12'2" x 13'1"
Area: 160 sq. ft
Counted as living area: Yes

Heated: Yes
Finished: Yes
Enclosed: Yes
Contiguous: Yes
Permitted: Yes
Wet space: No
Addition: No
Conversion: No

505 Princess Dr, Elizabeth, PA, US**18 Floor 2 - Living Room**

Dimensions: 27'1" x 16'2"
Area: 368 sq. ft
Counted as living area: Yes

Heated: Yes
Finished: Yes
Enclosed: Yes
Contiguous: Yes
Permitted: Yes
Wet space: No
Addition: No
Conversion: No

19 Floor 2 - Porch

Dimensions: 11'2" x 3'6"
Area: 102 sq. ft
Counted as living area: No

Heated: No
Finished: Yes
Enclosed: No
Contiguous: Yes
Permitted: Yes
Wet space: No
Addition: No
Conversion: No

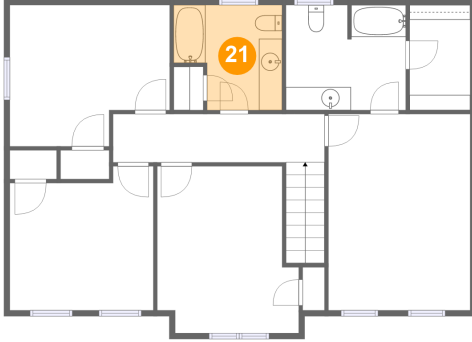
20 Floor 2 - WC

Dimensions: 4'8" x 5'6"
Area: 25 sq. ft
Counted as living area: Yes

Heated: Yes
Finished: Yes
Enclosed: Yes
Contiguous: Yes
Permitted: Yes
Wet space: Yes
Addition: No
Conversion: No

505 Princess Dr, Elizabeth, PA, US

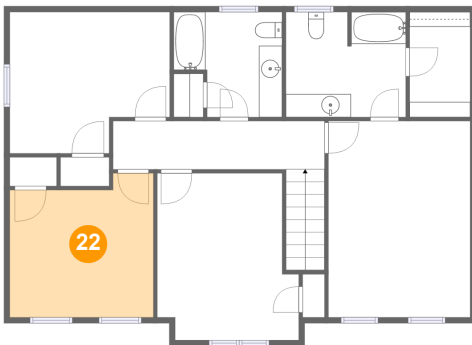
21 Floor 3 - Bath



Dimensions: 9'4" x 9'1"
Area: 73 sq. ft
Counted as living area: Yes

Heated: Yes
Finished: Yes
Enclosed: Yes
Contiguous: Yes
Permitted: Yes
Wet space: Yes
Addition: No
Conversion: No

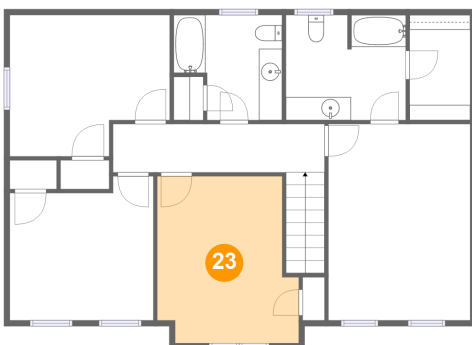
22 Floor 3 - Bedroom



Dimensions: 12'4" x 12'5"
Area: 141 sq. ft
Counted as living area: Yes

Heated: Yes
Finished: Yes
Enclosed: Yes
Contiguous: Yes
Permitted: Yes
Wet space: No
Addition: No
Conversion: No

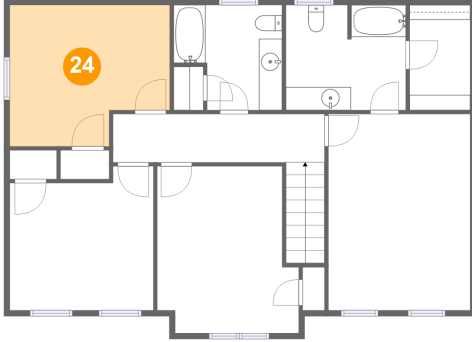
23 Floor 3 - Bedroom



Dimensions: 12'2" x 14'4"
Area: 160 sq. ft
Counted as living area: Yes

Heated: Yes
Finished: Yes
Enclosed: Yes
Contiguous: Yes
Permitted: Yes
Wet space: No
Addition: No
Conversion: No

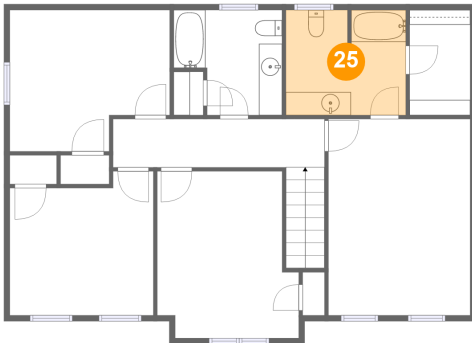
24 Floor 3 - Bedroom



Dimensions: 13'9" x 12'2"
Area: 151 sq. ft
Counted as living area: Yes

Heated: Yes
Finished: Yes
Enclosed: Yes
Contiguous: Yes
Permitted: Yes
Wet space: No
Addition: No
Conversion: No

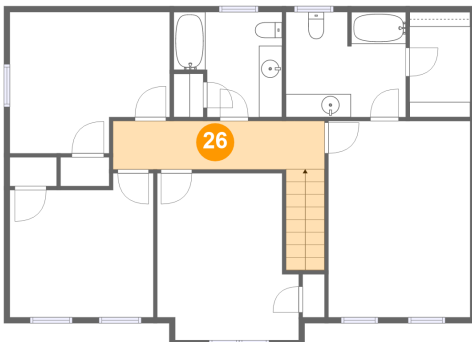
25 Floor 3 - Bath



Dimensions: 10'4" x 9'1"
Area: 92 sq. ft
Counted as living area: Yes

Heated: Yes
Finished: Yes
Enclosed: Yes
Contiguous: Yes
Permitted: Yes
Wet space: Yes
Addition: No
Conversion: No

26 Floor 3 - Hall

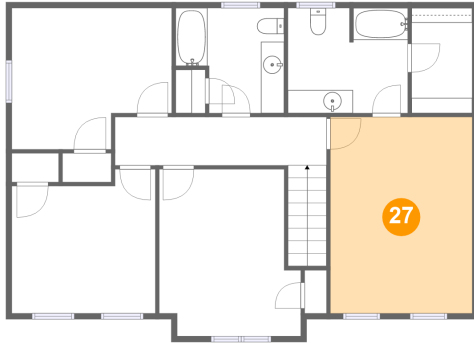


Dimensions: 18'3" x 4'2"
Area: 105 sq. ft
Counted as living area: Yes

Heated: Yes
Finished: Yes
Enclosed: Yes
Contiguous: Yes
Permitted: Yes
Wet space: No
Addition: No
Conversion: No

505 Princess Dr, Elizabeth, PA, US

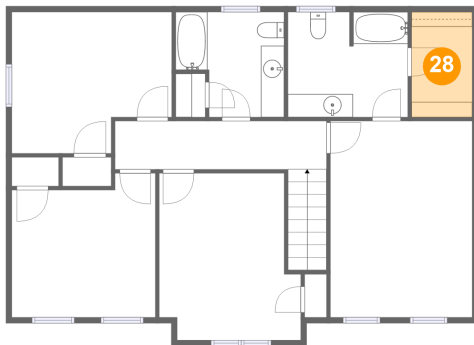
27 Floor 3 - Primary Bedroom



Dimensions: 12'3" x 16'11"
Area: 206 sq. ft
Counted as living area: Yes

Heated: Yes
Finished: Yes
Enclosed: Yes
Contiguous: Yes
Permitted: Yes
Wet space: No
Addition: No
Conversion: No

28 Floor 3 - W.I.C.



Dimensions: 5'3" x 9'1"
Area: 47 sq. ft
Counted as living area: Yes

Heated: Yes
Finished: Yes
Enclosed: Yes
Contiguous: Yes
Permitted: Yes
Wet space: No
Addition: No
Conversion: No