

# 7865 Nesbit Ferry Rd, Atlanta, GA, US



## Property summary


 **0** Garages

 **5** Bedrooms

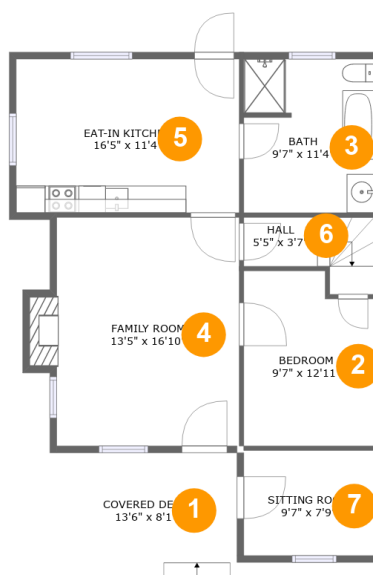
 **4** Bathrooms

 **2** Half baths

 **4** Floors

 **4,963** Gross living area sqft

 **8,590** Total sqft

**7865 Nesbit Ferry Rd,Atlanta,GA,US****Room dimensions****Floor 1**

Total sqft: 961    Living area: 753

#		Dimensions	sqft	Counted as living area
1	Outdoor	13'6" x 8'1"	109 sq. ft	No
2	Bedroom	9'7" x 12'11"	116 sq. ft	Yes
3	Bath	9'7" x 11'4"	107 sq. ft	Yes
4	Living Room	13'5" x 16'10"	236 sq. ft	Yes
5	Kitchen	16'5" x 11'4"	186 sq. ft	Yes
6	Hall	5'5" x 3'7"	41 sq. ft	Yes
7	Living Room	9'7" x 7'9"	74 sq. ft	No

**7865 Nesbit Ferry Rd,Atlanta,GA,US****Room dimensions****Floor 2****Total sqft: 5860    Living area: 3330**

#		Dimensions	sqft	Counted as living area
8	Outdoor	10'5" x 16'11"	176 sq. ft	No
9	Nook	14'1" x 11'10"	167 sq. ft	Yes
10	Living Room	23'8" x 31'0"	597 sq. ft	Yes
11	Entry	14'6" x 11'0"	136 sq. ft	Yes
12	Outdoor	47'11" x 43'8"	1878 sq. ft	No
13	Kitchen	14'1" x 14'9"	209 sq. ft	Yes
14	Living Room	13'1" x 16'10"	209 sq. ft	Yes
15	Hall	12'1" x 5'11"	58 sq. ft	Yes
16	Dining Room	14'1" x 14'5"	203 sq. ft	Yes
17	Living Room	29'8" x 17'9"	539 sq. ft	Yes
18	Bedroom	12'6" x 17'9"	232 sq. ft	Yes

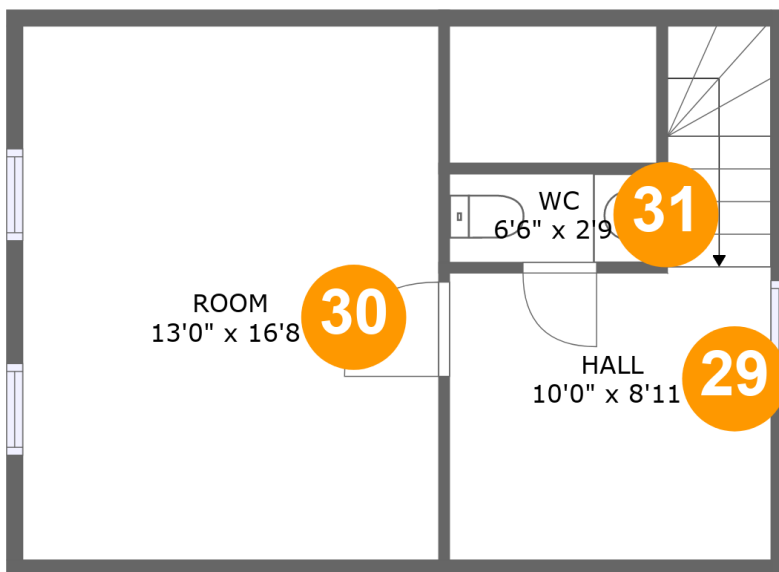
Scan captured on Tue, 10 Dec 2024 18:38:57 GMT

Information is calculated by Cubicasa technology deemed highly reliable but not guaranteed.

**7865 Nesbit Ferry Rd,Atlanta,GA,US**

#		Dimensions	sqft	Counted as living area
19	Entry	6'3" x 16'10"	129 sq. ft	Yes
20	Outdoor	32'11" x 7'4"	242 sq. ft	No
21	Hall	5'5" x 9'9"	53 sq. ft	Yes
22	Utility	11'3" x 10'9"	113 sq. ft	Yes
23	Bedroom	17'3" x 11'2"	193 sq. ft	Yes
24	Bath	9'7" x 4'10"	47 sq. ft	Yes
25	Pantry	6'11" x 7'2"	41 sq. ft	Yes
26	Bath	2'9" x 7'2"	20 sq. ft	Yes
27	Outdoor	7'5" x 23'5"	174 sq. ft	No
28	Bath	12'6" x 8'9"	96 sq. ft	Yes

7865 Nesbit Ferry Rd,Atlanta,GA,US



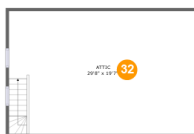
## Room dimensions

Floor 3

Total sqft: 431

Living area: 299

#		Dimensions	sqft	Counted as living area
29	Hall	10'0" x 8'11"	89 sq. ft	Yes
30	Room	13'0" x 16'8"	136 sq. ft	Yes
31	Bath	6'6" x 2'9"	18 sq. ft	Yes

**7865 Nesbit Ferry Rd,Atlanta,GA,US****Room dimensions**

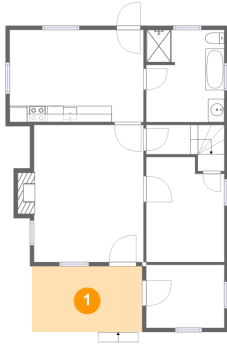
Floor 4

Total sqft: 1338 Living area: 581

#		Dimensions	sqft	Counted as living area
32	Attic	29'8" x 19'7"	455 sq. ft	No
33	Bedroom	10'5" x 14'11"	126 sq. ft	Yes
34	Bath	4'7" x 7'7"	35 sq. ft	Yes
35	Hall	8'4" x 4'6"	64 sq. ft	Yes
36	Cl	10'8" x 11'0"	62 sq. ft	Yes
37	Bedroom	14'2" x 14'8"	207 sq. ft	Yes

# 7865 Nesbit Ferry Rd, Atlanta, GA, US

## 1 Floor 1 - Outdoor



**Dimensions:** 13'6" x 8'1"  
**Area:** 109 sq. ft  
**Counted as living area:** No

**Heated:** No  
**Finished:** Yes  
**Enclosed:** No  
**Contiguous:** Yes  
**Permitted:** Yes  
**Wet space:** No  
**Addition:** No  
**Conversion:** No

## 2 Floor 1 - Bedroom

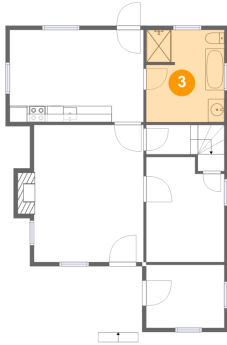


**Dimensions:** 9'7" x 12'11"  
**Area:** 116 sq. ft  
**Counted as living area:** Yes

**Heated:** Yes  
**Finished:** Yes  
**Enclosed:** Yes  
**Contiguous:** Yes  
**Permitted:** Yes  
**Wet space:** No  
**Addition:** No  
**Conversion:** No

# 7865 Nesbit Ferry Rd, Atlanta, GA, US

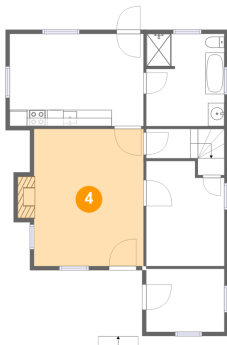
## 3 Floor 1 - Bath



Dimensions: 9'7" x 11'4"  
Area: 107 sq. ft  
Counted as living area: Yes

Heated: Yes  
Finished: Yes  
Enclosed: Yes  
Contiguous: Yes  
Permitted: Yes  
Wet space: Yes  
Addition: No  
Conversion: No

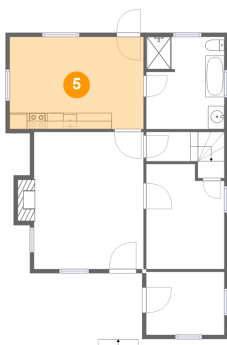
## 4 Floor 1 - Living Room



Dimensions: 13'5" x 16'10"  
Area: 236 sq. ft  
Counted as living area: Yes

Heated: Yes  
Finished: Yes  
Enclosed: Yes  
Contiguous: Yes  
Permitted: Yes  
Wet space: No  
Addition: No  
Conversion: No

## 5 Floor 1 - Kitchen



Dimensions: 16'5" x 11'4"  
Area: 186 sq. ft  
Counted as living area: Yes

Heated: Yes  
Finished: Yes  
Enclosed: Yes  
Contiguous: Yes  
Permitted: Yes  
Wet space: No  
Addition: No  
Conversion: No



# 7865 Nesbit Ferry Rd, Atlanta, GA, US

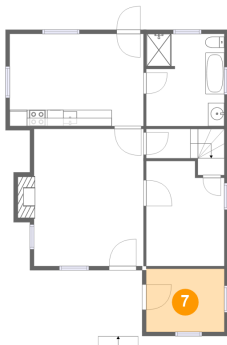
## 6 Floor 1 - Hall



Dimensions: 5'5" x 3'7"  
Area: 41 sq. ft  
Counted as living area: Yes

Heated: Yes  
Finished: Yes  
Enclosed: Yes  
Contiguous: Yes  
Permitted: Yes  
Wet space: No  
Addition: No  
Conversion: No

## 7 Floor 1 - Living Room



Dimensions: 9'7" x 7'9"  
Area: 74 sq. ft  
Counted as living area: No

Heated: Yes  
Finished: Yes  
Enclosed: Yes  
Contiguous: No  
Permitted: Yes  
Wet space: No  
Addition: No  
Conversion: No

## 8 Floor 2 - Outdoor



Dimensions: 10'5" x 16'11"  
Area: 176 sq. ft  
Counted as living area: No

Heated: No  
Finished: Yes  
Enclosed: No  
Contiguous: Yes  
Permitted: Yes  
Wet space: No  
Addition: No  
Conversion: No

# 7865 Nesbit Ferry Rd, Atlanta, GA, US

## 9 Floor 2 - Nook



**Dimensions:** 14'1" x 11'10"  
**Area:** 167 sq. ft  
**Counted as living area:** Yes

**Heated:** Yes  
**Finished:** Yes  
**Enclosed:** Yes  
**Contiguous:** Yes  
**Permitted:** Yes  
**Wet space:** No  
**Addition:** No  
**Conversion:** No

## 10 Floor 2 - Living Room



**Dimensions:** 23'8" x 31'0"  
**Area:** 597 sq. ft  
**Counted as living area:** Yes

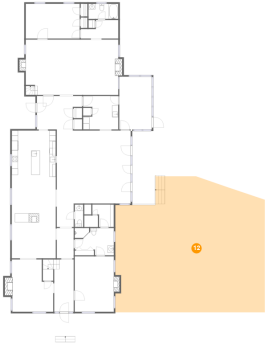
**Heated:** Yes  
**Finished:** Yes  
**Enclosed:** Yes  
**Contiguous:** Yes  
**Permitted:** Yes  
**Wet space:** No  
**Addition:** No  
**Conversion:** No

## 11 Floor 2 - Entry



**Dimensions:** 14'6" x 11'0"  
**Area:** 136 sq. ft  
**Counted as living area:** Yes

**Heated:** Yes  
**Finished:** Yes  
**Enclosed:** Yes  
**Contiguous:** Yes  
**Permitted:** Yes  
**Wet space:** No  
**Addition:** No  
**Conversion:** No

**7865 Nesbit Ferry Rd, Atlanta, GA, US****12 Floor 2 - Outdoor**

**Dimensions:** 47'11" x 43'8"  
**Area:** 1878 sq. ft  
**Counted as living area:** No

**Heated:** No  
**Finished:** Yes  
**Enclosed:** No  
**Contiguous:** Yes  
**Permitted:** Yes  
**Wet space:** No  
**Addition:** No  
**Conversion:** No

**13 Floor 2 - Kitchen**

**Dimensions:** 14'1" x 14'9"  
**Area:** 209 sq. ft  
**Counted as living area:** Yes

**Heated:** Yes  
**Finished:** Yes  
**Enclosed:** Yes  
**Contiguous:** Yes  
**Permitted:** Yes  
**Wet space:** No  
**Addition:** No  
**Conversion:** No

**14 Floor 2 - Living Room**

**Dimensions:** 13'1" x 16'10"  
**Area:** 209 sq. ft  
**Counted as living area:** Yes

**Heated:** Yes  
**Finished:** Yes  
**Enclosed:** Yes  
**Contiguous:** Yes  
**Permitted:** Yes  
**Wet space:** No  
**Addition:** No  
**Conversion:** No

# 7865 Nesbit Ferry Rd, Atlanta, GA, US

## 15 Floor 2 - Hall



**Dimensions:** 12'1" x 5'11"  
**Area:** 58 sq. ft  
**Counted as living area:** Yes

**Heated:** Yes  
**Finished:** Yes  
**Enclosed:** Yes  
**Contiguous:** Yes  
**Permitted:** Yes  
**Wet space:** No  
**Addition:** No  
**Conversion:** No

## 16 Floor 2 - Dining Room



**Dimensions:** 14'1" x 14'5"  
**Area:** 203 sq. ft  
**Counted as living area:** Yes

**Heated:** Yes  
**Finished:** Yes  
**Enclosed:** Yes  
**Contiguous:** Yes  
**Permitted:** Yes  
**Wet space:** No  
**Addition:** No  
**Conversion:** No

## 17 Floor 2 - Living Room



**Dimensions:** 29'8" x 17'9"  
**Area:** 539 sq. ft  
**Counted as living area:** Yes

**Heated:** Yes  
**Finished:** Yes  
**Enclosed:** Yes  
**Contiguous:** Yes  
**Permitted:** Yes  
**Wet space:** No  
**Addition:** No  
**Conversion:** No

**7865 Nesbit Ferry Rd, Atlanta, GA, US****18 Floor 2 - Bedroom**

**Dimensions:** 12'6" x 17'9"  
**Area:** 232 sq. ft  
**Counted as living area:** Yes

**Heated:** Yes  
**Finished:** Yes  
**Enclosed:** Yes  
**Contiguous:** Yes  
**Permitted:** Yes  
**Wet space:** No  
**Addition:** No  
**Conversion:** No

**19 Floor 2 - Entry**

**Dimensions:** 6'3" x 16'10"  
**Area:** 129 sq. ft  
**Counted as living area:** Yes

**Heated:** Yes  
**Finished:** Yes  
**Enclosed:** Yes  
**Contiguous:** Yes  
**Permitted:** Yes  
**Wet space:** No  
**Addition:** No  
**Conversion:** No

**20 Floor 2 - Outdoor**

**Dimensions:** 32'11" x 7'4"  
**Area:** 242 sq. ft  
**Counted as living area:** No

**Heated:** No  
**Finished:** Yes  
**Enclosed:** No  
**Contiguous:** Yes  
**Permitted:** Yes  
**Wet space:** No  
**Addition:** No  
**Conversion:** No

# 7865 Nesbit Ferry Rd, Atlanta, GA, US

## 21 Floor 2 - Hall



Dimensions: 5'5" x 9'9"  
Area: 53 sq. ft  
Counted as living area: Yes

Heated: Yes  
Finished: Yes  
Enclosed: Yes  
Contiguous: Yes  
Permitted: Yes  
Wet space: No  
Addition: No  
Conversion: No

## 22 Floor 2 - Utility



Dimensions: 11'3" x 10'9"  
Area: 113 sq. ft  
Counted as living area: Yes

Heated: Yes  
Finished: Yes  
Enclosed: Yes  
Contiguous: Yes  
Permitted: Yes  
Wet space: No  
Addition: No  
Conversion: No

## 23 Floor 2 - Bedroom



Dimensions: 17'3" x 11'2"  
Area: 193 sq. ft  
Counted as living area: Yes

Heated: Yes  
Finished: Yes  
Enclosed: Yes  
Contiguous: Yes  
Permitted: Yes  
Wet space: No  
Addition: No  
Conversion: No

# 7865 Nesbit Ferry Rd, Atlanta, GA, US

## 24 Floor 2 - Bath



Dimensions: 9'7" x 4'10"  
Area: 47 sq. ft  
Counted as living area: Yes

Heated: Yes  
Finished: Yes  
Enclosed: Yes  
Contiguous: Yes  
Permitted: Yes  
Wet space: Yes  
Addition: No  
Conversion: No

## 25 Floor 2 - Pantry



Dimensions: 6'11" x 7'2"  
Area: 41 sq. ft  
Counted as living area: Yes

Heated: Yes  
Finished: Yes  
Enclosed: Yes  
Contiguous: Yes  
Permitted: Yes  
Wet space: No  
Addition: No  
Conversion: No

## 26 Floor 2 - Bath



Dimensions: 2'9" x 7'2"  
Area: 20 sq. ft  
Counted as living area: Yes

Heated: Yes  
Finished: Yes  
Enclosed: Yes  
Contiguous: Yes  
Permitted: Yes  
Wet space: Yes  
Addition: No  
Conversion: No

# 7865 Nesbit Ferry Rd, Atlanta, GA, US

## 27 Floor 2 - Outdoor



Dimensions: 7'5" x 23'5"  
Area: 174 sq. ft  
Counted as living area: No

Heated: No  
Finished: Yes  
Enclosed: No  
Contiguous: Yes  
Permitted: Yes  
Wet space: No  
Addition: No  
Conversion: No

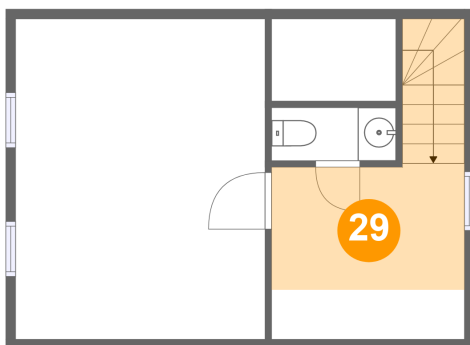
## 28 Floor 2 - Bath



Dimensions: 12'6" x 8'9"  
Area: 96 sq. ft  
Counted as living area: Yes

Heated: Yes  
Finished: Yes  
Enclosed: Yes  
Contiguous: Yes  
Permitted: Yes  
Wet space: Yes  
Addition: No  
Conversion: No

## 29 Floor 3 - Hall



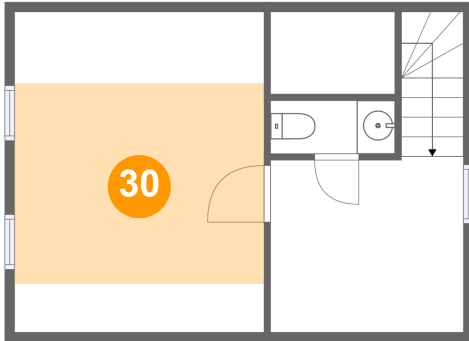
Dimensions: 10'0" x 8'11"  
Area: 89 sq. ft  
Counted as living area: Yes

Heated: Yes  
Finished: Yes  
Enclosed: Yes  
Contiguous: Yes  
Permitted: Yes  
Wet space: No  
Addition: No  
Conversion: No



7865 Nesbit Ferry Rd, Atlanta, GA, US

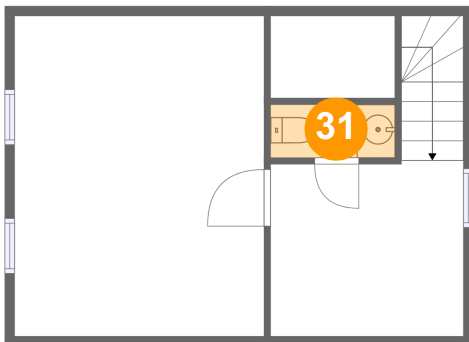
**30** Floor 3 - Room



Dimensions: 13'0" x 16'8"  
Area: 136 sq. ft  
Counted as living area: Yes

Heated: Yes  
Finished: Yes  
Enclosed: Yes  
Contiguous: Yes  
Permitted: Yes  
Wet space: No  
Addition: No  
Conversion: No

**31** Floor 3 - Bath



Dimensions: 6'6" x 2'9"  
Area: 18 sq. ft  
Counted as living area: Yes

Heated: Yes  
Finished: Yes  
Enclosed: Yes  
Contiguous: Yes  
Permitted: Yes  
Wet space: Yes  
Addition: No  
Conversion: No

**32** Floor 4 - Attic



Dimensions: 29'8" x 19'7"  
Area: 455 sq. ft  
Counted as living area: No

Heated: No  
Finished: Yes  
Enclosed: Yes  
Contiguous: Yes  
Permitted: Yes  
Wet space: No  
Addition: No  
Conversion: No



# 7865 Nesbit Ferry Rd, Atlanta, GA, US

## 33 Floor 4 - Bedroom



Dimensions: 10'5" x 14'11"  
Area: 126 sq. ft  
Counted as living area: Yes

Heated: Yes  
Finished: Yes  
Enclosed: Yes  
Contiguous: Yes  
Permitted: Yes  
Wet space: No  
Addition: No  
Conversion: No



## 34 Floor 4 - Bath



Dimensions: 4'7" x 7'7"  
Area: 35 sq. ft  
Counted as living area: Yes

Heated: Yes  
Finished: Yes  
Enclosed: Yes  
Contiguous: Yes  
Permitted: Yes  
Wet space: Yes  
Addition: No  
Conversion: No



## 35 Floor 4 - Hall



Dimensions: 8'4" x 4'6"  
Area: 64 sq. ft  
Counted as living area: Yes

Heated: Yes  
Finished: Yes  
Enclosed: Yes  
Contiguous: Yes  
Permitted: Yes  
Wet space: No  
Addition: No  
Conversion: No



# 7865 Nesbit Ferry Rd, Atlanta, GA, US

## 36 Floor 4 - Cl



**Dimensions:** 10'8" x 11'0"  
**Area:** 62 sq. ft  
**Counted as living area:** Yes

**Heated:** Yes  
**Finished:** Yes  
**Enclosed:** Yes  
**Contiguous:** Yes  
**Permitted:** Yes  
**Wet space:** No  
**Addition:** No  
**Conversion:** No



## 37 Floor 4 - Bedroom



**Dimensions:** 14'2" x 14'8"  
**Area:** 207 sq. ft  
**Counted as living area:** Yes

**Heated:** Yes  
**Finished:** Yes  
**Enclosed:** Yes  
**Contiguous:** Yes  
**Permitted:** Yes  
**Wet space:** No  
**Addition:** No  
**Conversion:** No

