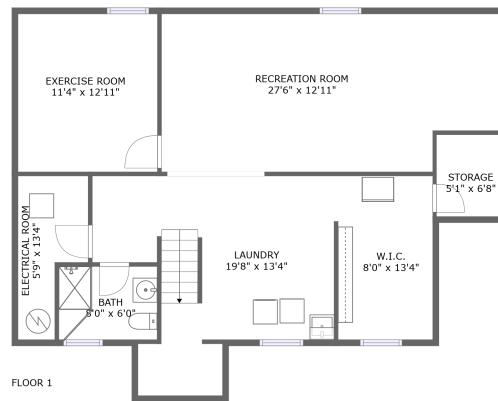
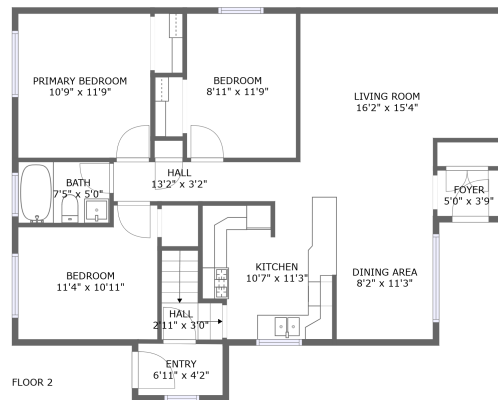


907 Rosehill Dr, Peterborough, ON, CA



Property summary

 **0** Garages

 **3** Bedrooms

 **2** Bathrooms

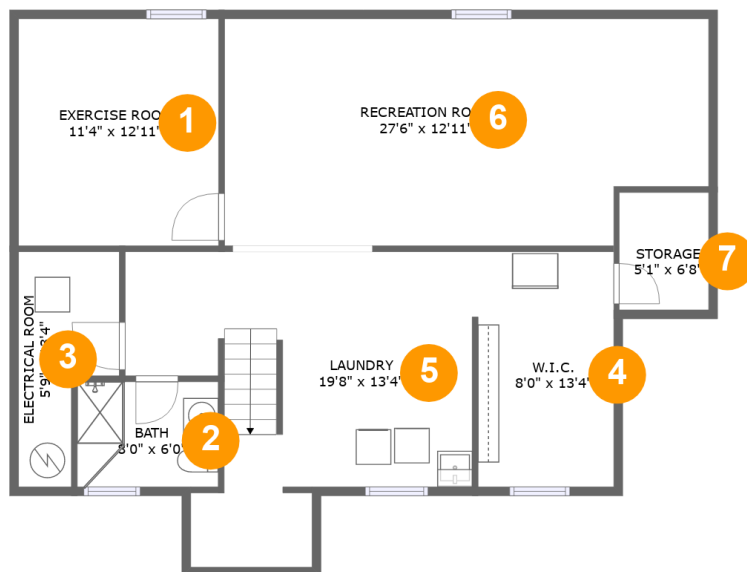
 **0** Half baths

 **2** Floors

 **2,073** Gross living area sqft

 **2,181** Total sqft

907 Rosehill Dr, Peterborough, ON, CA

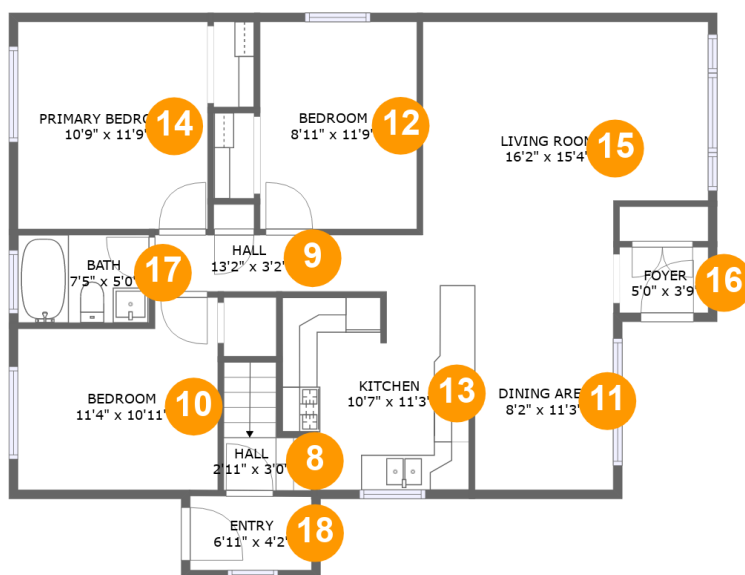


Room dimensions

Floor 1

Total sqft: 1091 Living area: 983

#		Dimensions	sqft	Counted as living area
1	Exercise Room	11'4" x 12'11"	146 sq. ft	Yes
2	Bath	8'0" x 6'0"	48 sq. ft	Yes
3	Electrical Room	5'9" x 13'4"	59 sq. ft	No
4	W.I.C.	8'0" x 13'4"	104 sq. ft	Yes
5	Laundry	19'8" x 13'4"	217 sq. ft	Yes
6	Recreation Room	27'6" x 12'11"	336 sq. ft	Yes
7	Storage	5'1" x 6'8"	34 sq. ft	No

907 Rosehill Dr, Peterborough, ON, CA**Room dimensions**

Floor 2

Total sqft: 1090 Living area: 1090

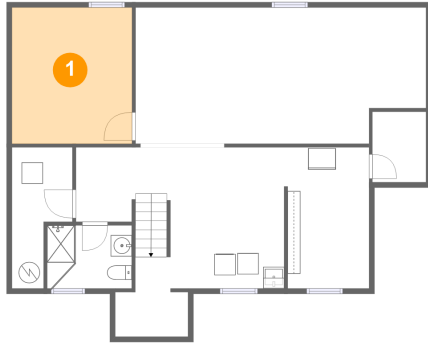
#		Dimensions	sqft	Counted as living area
8	Hall	2'11" x 3'0"	28 sq. ft	Yes
9	Hall	13'2" x 3'2"	42 sq. ft	Yes
10	Bedroom	11'4" x 10'11"	110 sq. ft	Yes
11	Dining Area	8'2" x 11'3"	91 sq. ft	Yes
12	Bedroom	8'11" x 11'9"	105 sq. ft	Yes
13	Kitchen	10'7" x 11'3"	110 sq. ft	Yes
14	Primary Bedroom	10'9" x 11'9"	127 sq. ft	Yes
15	Living Room	16'2" x 15'4"	227 sq. ft	Yes
16	Foyer	5'0" x 3'9"	19 sq. ft	Yes
17	Bath	7'5" x 5'0"	37 sq. ft	Yes
18	Entry	6'11" x 4'2"	29 sq. ft	Yes

Scan captured on Mon, 24 Mar 2025 21:20:30 GMT

Information is calculated by Cubicasa technology deemed highly reliable but not guaranteed.

907 Rosehill Dr, Peterborough, ON, CA

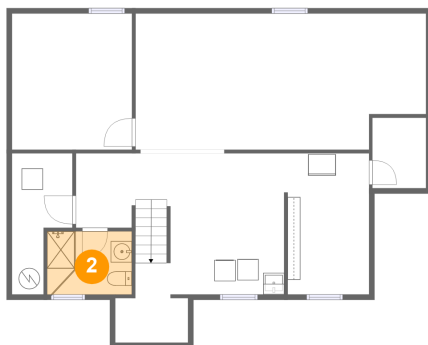
1 Floor 1 - Exercise Room



Dimensions: 11'4" x 12'11"
Area: 146 sq. ft
Counted as living area: Yes

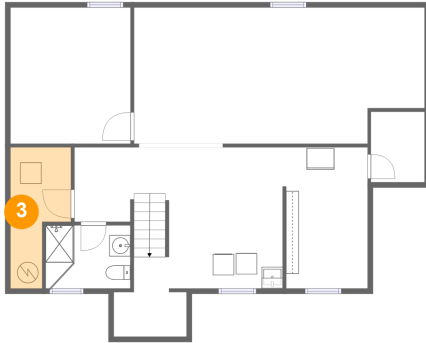
Heated: Yes
Finished: Yes
Enclosed: Yes
Contiguous: Yes
Permitted: Yes
Wet space: No
Addition: No
Conversion: No

2 Floor 1 - Bath



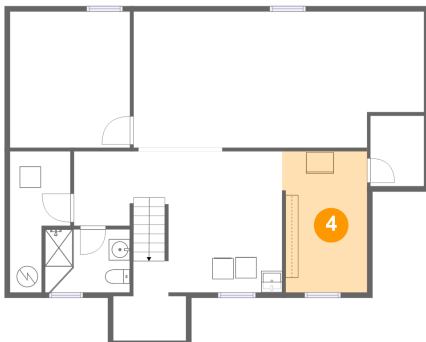
Dimensions: 8'0" x 6'0"
Area: 48 sq. ft
Counted as living area: Yes

Heated: Yes
Finished: Yes
Enclosed: Yes
Contiguous: Yes
Permitted: Yes
Wet space: Yes
Addition: No
Conversion: No

907 Rosehill Dr, Peterborough, ON, CA**3 Floor 1 - Electrical Room**

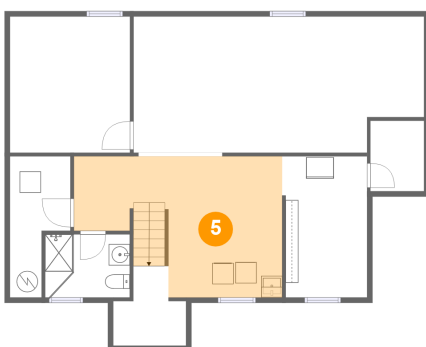
Dimensions: 5'9" x 13'4"
Area: 59 sq. ft
Counted as living area: No

Heated: No
Finished: No
Enclosed: Yes
Contiguous: Yes
Permitted: Yes
Wet space: No
Addition: No
Conversion: No

4 Floor 1 - W.I.C.

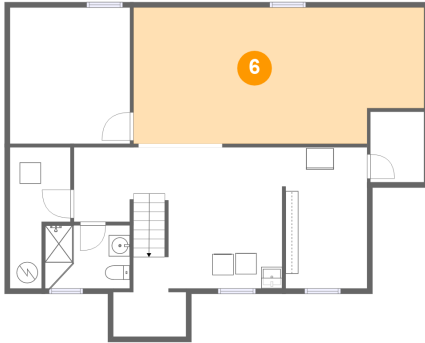
Dimensions: 8'0" x 13'4"
Area: 104 sq. ft
Counted as living area: Yes

Heated: Yes
Finished: Yes
Enclosed: Yes
Contiguous: Yes
Permitted: Yes
Wet space: No
Addition: No
Conversion: No

5 Floor 1 - Laundry

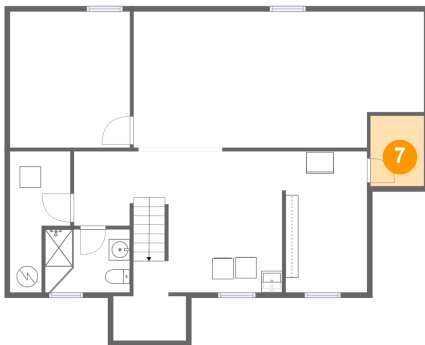
Dimensions: 19'8" x 13'4"
Area: 217 sq. ft
Counted as living area: Yes

Heated: Yes
Finished: Yes
Enclosed: Yes
Contiguous: Yes
Permitted: Yes
Wet space: No
Addition: No
Conversion: No

907 Rosehill Dr, Peterborough, ON, CA**6 Floor 1 - Recreation Room**

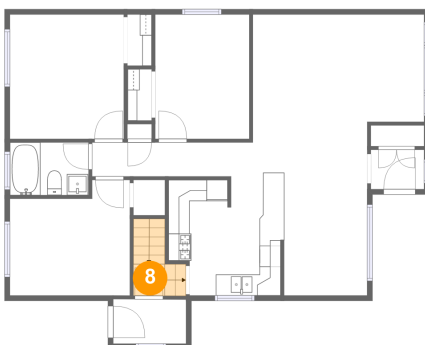
Dimensions: 27'6" x 12'11"
 Area: 336 sq. ft
 Counted as living area: Yes

Heated: Yes
 Finished: Yes
 Enclosed: Yes
 Contiguous: Yes
 Permitted: Yes
 Wet space: No
 Addition: No
 Conversion: No

7 Floor 1 - Storage

Dimensions: 5'1" x 6'8"
 Area: 34 sq. ft
 Counted as living area: No

Heated: No
 Finished: No
 Enclosed: No
 Contiguous: Yes
 Permitted: Yes
 Wet space: No
 Addition: No
 Conversion: No

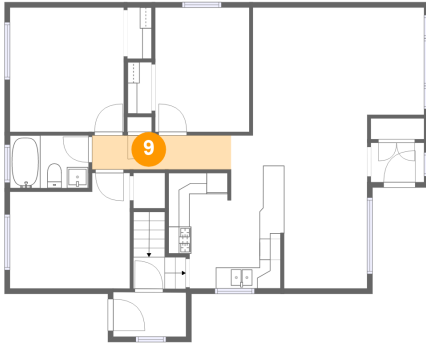
8 Floor 2 - Hall

Dimensions: 2'11" x 3'0"
 Area: 28 sq. ft
 Counted as living area: Yes

Heated: Yes
 Finished: Yes
 Enclosed: Yes
 Contiguous: Yes
 Permitted: Yes
 Wet space: No
 Addition: No
 Conversion: No

907 Rosehill Dr, Peterborough, ON, CA

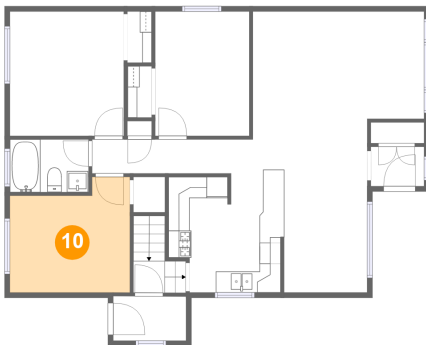
9 Floor 2 - Hall



Dimensions: 13'2" x 3'2"
Area: 42 sq. ft
Counted as living area: Yes

Heated: Yes
Finished: Yes
Enclosed: Yes
Contiguous: Yes
Permitted: Yes
Wet space: No
Addition: No
Conversion: No

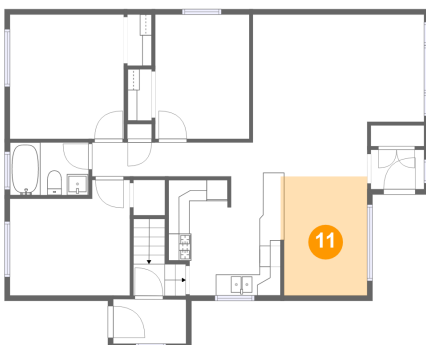
10 Floor 2 - Bedroom



Dimensions: 11'4" x 10'11"
Area: 110 sq. ft
Counted as living area: Yes

Heated: Yes
Finished: Yes
Enclosed: Yes
Contiguous: Yes
Permitted: Yes
Wet space: No
Addition: No
Conversion: No

11 Floor 2 - Dining Area



Dimensions: 8'2" x 11'3"
Area: 91 sq. ft
Counted as living area: Yes

Heated: Yes
Finished: Yes
Enclosed: Yes
Contiguous: Yes
Permitted: Yes
Wet space: No
Addition: No
Conversion: No

907 Rosehill Dr, Peterborough, ON, CA

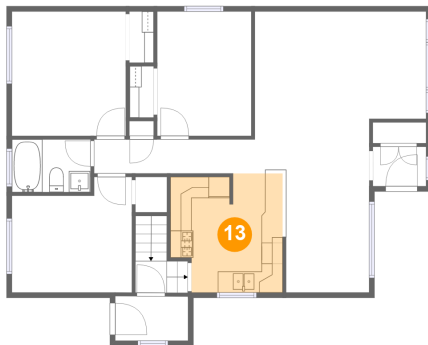
12 Floor 2 - Bedroom



Dimensions: 8'11" x 11'9"
Area: 105 sq. ft
Counted as living area: Yes

Heated: Yes
Finished: Yes
Enclosed: Yes
Contiguous: Yes
Permitted: Yes
Wet space: No
Addition: No
Conversion: No

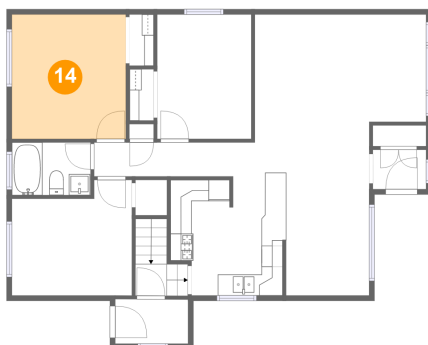
13 Floor 2 - Kitchen



Dimensions: 10'7" x 11'3"
Area: 110 sq. ft
Counted as living area: Yes

Heated: Yes
Finished: Yes
Enclosed: Yes
Contiguous: Yes
Permitted: Yes
Wet space: No
Addition: No
Conversion: No

14 Floor 2 - Primary Bedroom

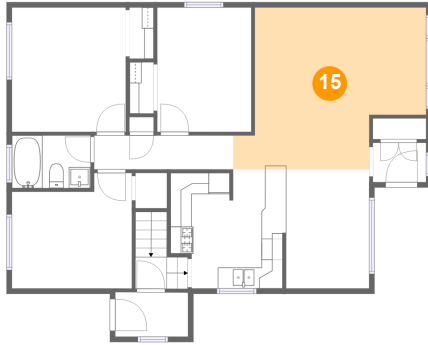


Dimensions: 10'9" x 11'9"
Area: 127 sq. ft
Counted as living area: Yes

Heated: Yes
Finished: Yes
Enclosed: Yes
Contiguous: Yes
Permitted: Yes
Wet space: No
Addition: No
Conversion: No

907 Rosehill Dr, Peterborough, ON, CA

15 Floor 2 - Living Room



Dimensions: 16'2" x 15'4"
Area: 227 sq. ft
Counted as living area: Yes

Heated: Yes
Finished: Yes
Enclosed: Yes
Contiguous: Yes
Permitted: Yes
Wet space: No
Addition: No
Conversion: No

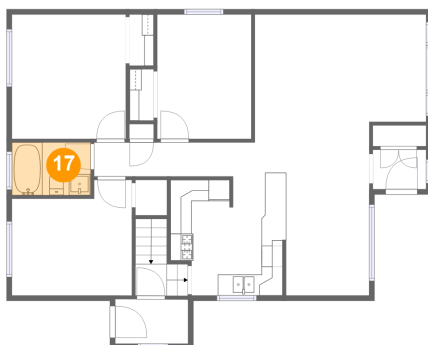
16 Floor 2 - Foyer



Dimensions: 5'0" x 3'9"
Area: 19 sq. ft
Counted as living area: Yes

Heated: Yes
Finished: Yes
Enclosed: Yes
Contiguous: Yes
Permitted: Yes
Wet space: No
Addition: No
Conversion: No

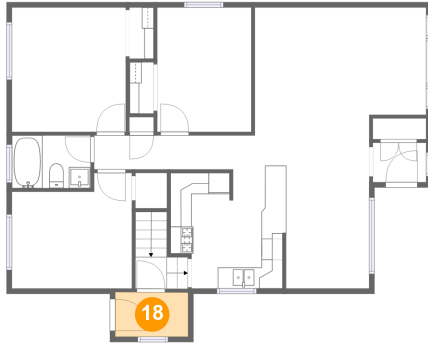
17 Floor 2 - Bath



Dimensions: 7'5" x 5'0"
Area: 37 sq. ft
Counted as living area: Yes

Heated: Yes
Finished: Yes
Enclosed: Yes
Contiguous: Yes
Permitted: Yes
Wet space: Yes
Addition: No
Conversion: No

18 Floor 2 - Entry



Dimensions: 6'11" x 4'2"
Area: 29 sq. ft
Counted as living area: Yes

Heated: Yes
Finished: Yes
Enclosed: Yes
Contiguous: Yes
Permitted: Yes
Wet space: No
Addition: No
Conversion: No