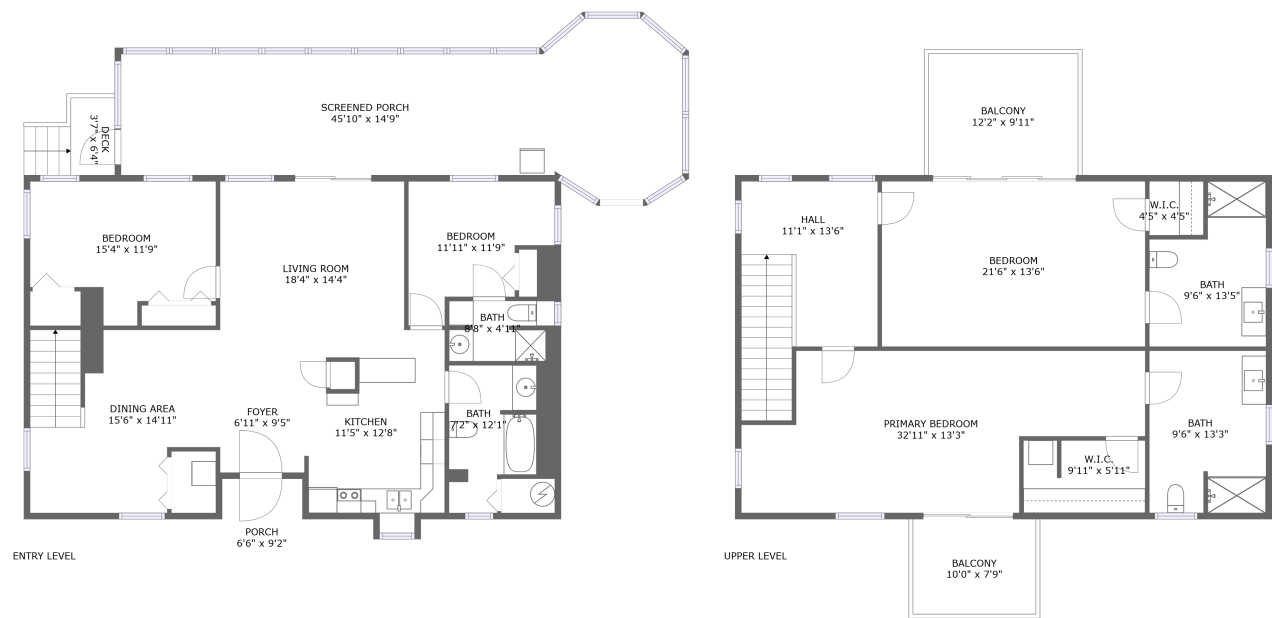


Home report

228 Cove Road, Penhook, Pittsylvania County, Virginia, United States, 24137



Total Area: 2291 sq. ft

Floor 1: 1133 sq. ft, Floor 2: 1158 sq. ft

Excluded: Screened porch 490 sq. ft, Porch 59 sq. ft, Deck 38 sq. ft, Embedded window 6 sq. ft, Balcony 199 sq. ft, Walls: 185 sq. ft

Property summary

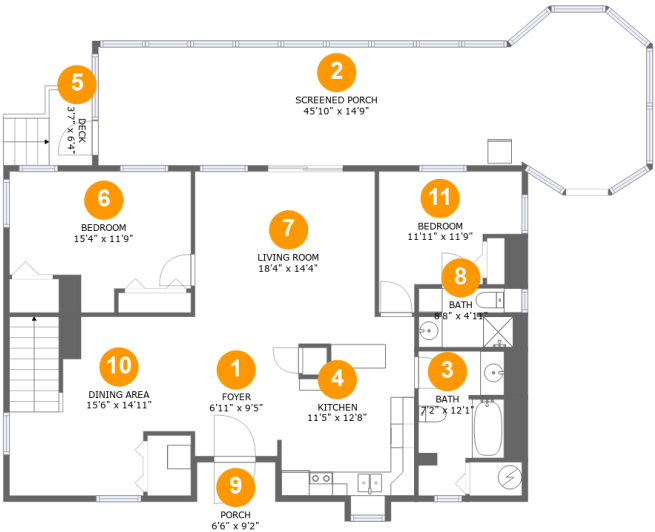
 **2** Floors

 **4** Bedrooms

 **4** Bathrooms

Home report

228 Cove Road, Penhook, Pittsylvania County, Virginia, United States, 24137



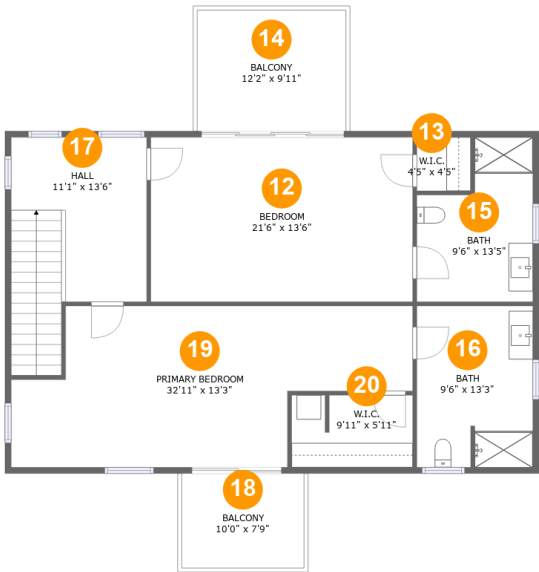
Room dimensions

Floor 1 Total:1133sqft Excluded: 593sqft

#		Max Dimensions	sqft	Included
1	Foyer	6'11" x 9'5"	65 sq. ft	Yes
2	Screened Porch	45'10" x 14'9"	490 sq. ft	No
3	Bath	7'2" x 12'1"	88 sq. ft	Yes
4	Kitchen	11'5" x 12'8"	136 sq. ft	Yes
5	Deck	3'7" x 6'4"	38 sq. ft	No
6	Bedroom	15'4" x 11'9"	149 sq. ft	Yes
7	Living Room	18'4" x 14'4"	223 sq. ft	Yes
8	Bath	8'8" x 4'11"	41 sq. ft	Yes
9	Porch	6'6" x 9'2"	59 sq. ft	No
10	Dining Area	15'6" x 14'11"	201 sq. ft	Yes
11	Bedroom	11'11" x 11'9"	106 sq. ft	Yes

Home report

228 Cove Road, Penhook, Pittsylvania County, Virginia, United States, 24137



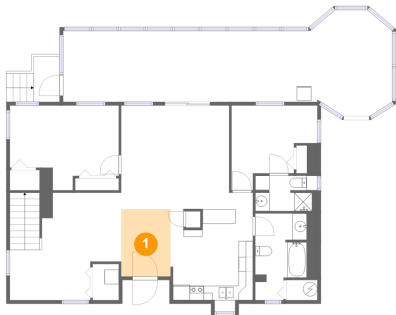
Room dimensions

Floor 2 Total:1158sqft Excluded: 199sqft

#		Max Dimensions	sqft	Included
12	Bedroom	21'6" x 13'6"	290 sq. ft	Yes
13	W.I.C.	4'5" x 4'5"	19 sq. ft	Yes
14	Balcony	12'2" x 9'11"	121 sq. ft	No
15	Bath	9'6" x 13'5"	106 sq. ft	Yes
16	Bath	9'6" x 13'3"	125 sq. ft	Yes
17	Hall	11'1" x 13'6"	175 sq. ft	Yes
18	Balcony	10'0" x 7'9"	78 sq. ft	No
19	Primary Bedroom	32'11" x 13'3"	345 sq. ft	Yes
20	W.I.C.	9'11" x 5'11"	58 sq. ft	Yes

228 Cove Road, Penhook, Pittsylvania County, Virginia, United States, 24137

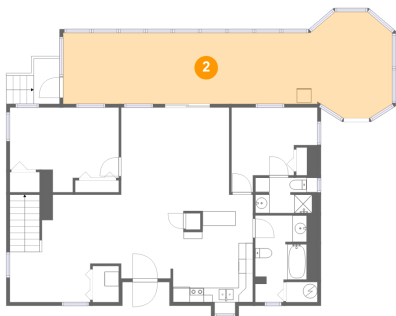
1 Floor 1 - Foyer



Max Dimensions: 6'11" x 9'5"
Calculated Area: 65 sq. ft
Included: Yes

Heated: Yes
Finished: Yes
Enclosed: Yes
Contiguous: Yes
Permitted: Yes
Wet space: No
Addition: No
Conversion: No

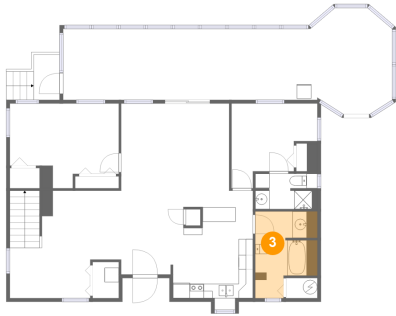
2 Floor 1 - Screened Porch



Max Dimensions: 45'10" x 14'9"
Calculated Area: 490 sq. ft
Included: No

Heated: No
Finished: Yes
Enclosed: No
Contiguous: Yes
Permitted: Yes
Wet space: No
Addition: No
Conversion: No

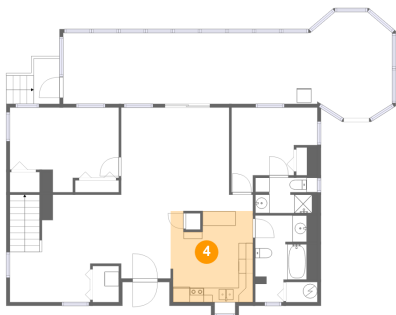
3 Floor 1 - Bath



Max Dimensions: 7'2" x 12'1"
Calculated Area: 88 sq. ft
Included: Yes

Heated: Yes
Finished: Yes
Enclosed: Yes
Contiguous: Yes
Permitted: Yes
Wet space: Yes
Addition: No
Conversion: No

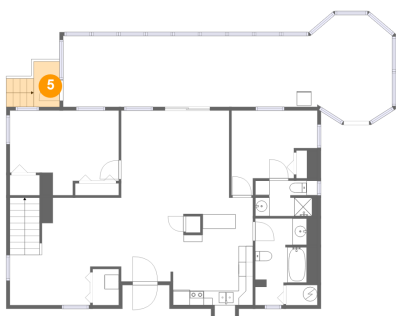
4 Floor 1 - Kitchen



Max Dimensions: 11'5" x 12'8"
Calculated Area: 136 sq. ft
Included: Yes

Heated: Yes
Finished: Yes
Enclosed: Yes
Contiguous: Yes
Permitted: Yes
Wet space: No
Addition: No
Conversion: No

5 Floor 1 - Deck

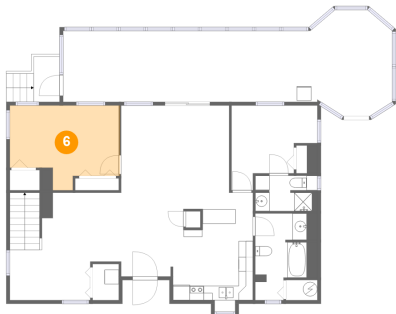


Max Dimensions: 3'7" x 6'4"
Calculated Area: 38 sq. ft
Included: No

Heated: No
Finished: Yes
Enclosed: No
Contiguous: Yes
Permitted: Yes
Wet space: No
Addition: No
Conversion: No

228 Cove Road, Penhook, Pittsylvania County, Virginia, United States, 24137

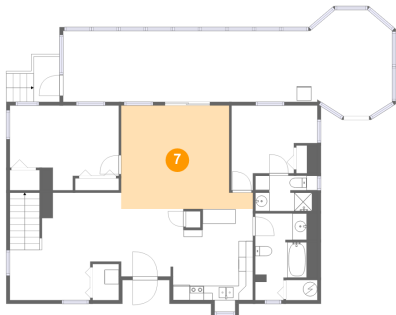
6 Floor 1 - Bedroom



Max Dimensions: 15'4" x 11'9"
Calculated Area: 149 sq. ft
Included: Yes

Heated: Yes
Finished: Yes
Enclosed: Yes
Contiguous: Yes
Permitted: Yes
Wet space: No
Addition: No
Conversion: No

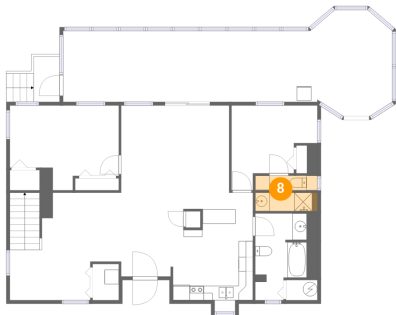
7 Floor 1 - Living Room



Max Dimensions: 18'4" x 14'4"
Calculated Area: 223 sq. ft
Included: Yes

Heated: Yes
Finished: Yes
Enclosed: Yes
Contiguous: Yes
Permitted: Yes
Wet space: No
Addition: No
Conversion: No

8 Floor 1 - Bath

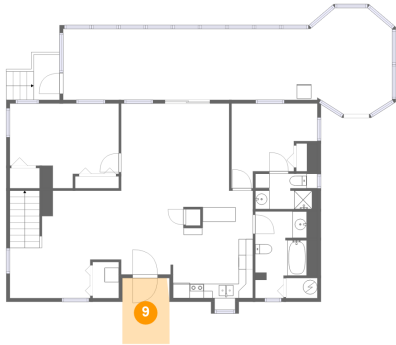


Max Dimensions: 8'8" x 4'11"
Calculated Area: 41 sq. ft
Included: Yes

Heated: Yes
Finished: Yes
Enclosed: Yes
Contiguous: Yes
Permitted: Yes
Wet space: Yes
Addition: No
Conversion: No

228 Cove Road, Penhook, Pittsylvania County, Virginia, United States, 24137

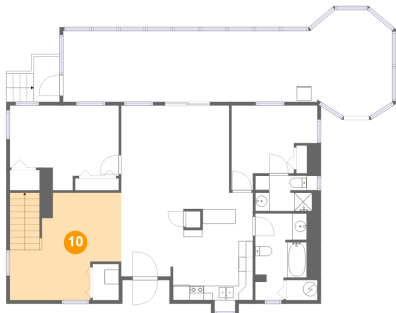
9 Floor 1 - Porch



Max Dimensions: 6'6" x 9'2"
Calculated Area: 59 sq. ft
Included: No

Heated: No
Finished: Yes
Enclosed: No
Contiguous: Yes
Permitted: Yes
Wet space: No
Addition: No
Conversion: No

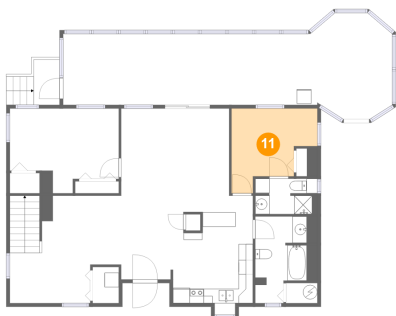
10 Floor 1 - Dining Area



Max Dimensions: 15'6" x 14'11"
Calculated Area: 201 sq. ft
Included: Yes

Heated: Yes
Finished: Yes
Enclosed: Yes
Contiguous: Yes
Permitted: Yes
Wet space: No
Addition: No
Conversion: No

11 Floor 1 - Bedroom



Max Dimensions: 11'11" x 11'9"
Calculated Area: 106 sq. ft
Included: Yes

Heated: Yes
Finished: Yes
Enclosed: Yes
Contiguous: Yes
Permitted: Yes
Wet space: No
Addition: No
Conversion: No

228 Cove Road, Penhook, Pittsylvania County, Virginia, United States, 24137

12 Floor 2 - Bedroom



Max Dimensions: 21'6" x 13'6"
Calculated Area: 290 sq. ft
Included: Yes

Heated: Yes
Finished: Yes
Enclosed: Yes
Contiguous: Yes
Permitted: Yes
Wet space: No
Addition: No
Conversion: No

13 Floor 2 - W.I.C.



Max Dimensions: 4'5" x 4'5"
Calculated Area: 19 sq. ft
Included: Yes

Heated: Yes
Finished: Yes
Enclosed: Yes
Contiguous: Yes
Permitted: Yes
Wet space: No
Addition: No
Conversion: No

14 Floor 2 - Balcony

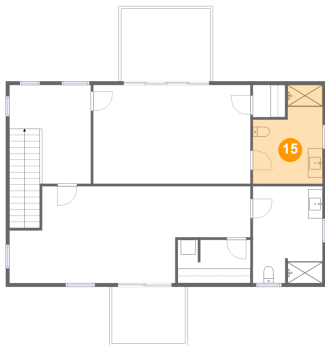


Max Dimensions: 12'2" x 9'11"
Calculated Area: 121 sq. ft
Included: No

Heated: No
Finished: Yes
Enclosed: No
Contiguous: Yes
Permitted: Yes
Wet space: No
Addition: No
Conversion: No

228 Cove Road, Penhook, Pittsylvania County, Virginia, United States, 24137

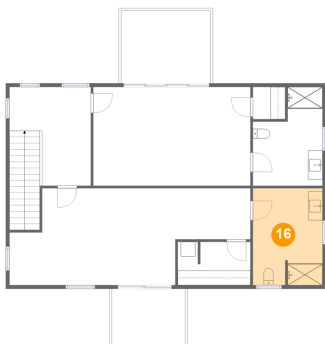
15 Floor 2 - Bath



Max Dimensions: 9'6" x 13'5"
Calculated Area: 106 sq. ft
Included: Yes

Heated: Yes
Finished: Yes
Enclosed: Yes
Contiguous: Yes
Permitted: Yes
Wet space: Yes
Addition: No
Conversion: No

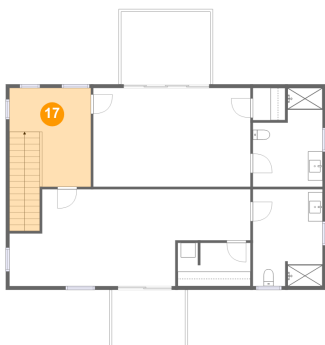
16 Floor 2 - Bath



Max Dimensions: 9'6" x 13'3"
Calculated Area: 125 sq. ft
Included: Yes

Heated: Yes
Finished: Yes
Enclosed: Yes
Contiguous: Yes
Permitted: Yes
Wet space: Yes
Addition: No
Conversion: No

17 Floor 2 - Hall

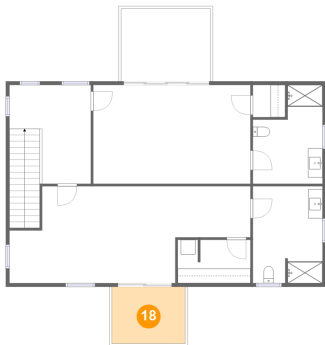


Max Dimensions: 11'1" x 13'6"
Calculated Area: 175 sq. ft
Included: Yes

Heated: Yes
Finished: Yes
Enclosed: Yes
Contiguous: Yes
Permitted: Yes
Wet space: No
Addition: No
Conversion: No

228 Cove Road, Penhook, Pittsylvania County, Virginia, United States, 24137

18 Floor 2 - Balcony



Max Dimensions: 10'0" x 7'9"
Calculated Area: 78 sq. ft
Included: No

Heated: No
Finished: Yes
Enclosed: No
Contiguous: Yes
Permitted: Yes
Wet space: No
Addition: No
Conversion: No

19 Floor 2 - Primary Bedroom



Max Dimensions: 32'11" x 13'3"
Calculated Area: 345 sq. ft
Included: Yes

Heated: Yes
Finished: Yes
Enclosed: Yes
Contiguous: Yes
Permitted: Yes
Wet space: No
Addition: No
Conversion: No

20 Floor 2 - W.I.C.



Max Dimensions: 9'11" x 5'11"
Calculated Area: 58 sq. ft
Included: Yes

Heated: Yes
Finished: Yes
Enclosed: Yes
Contiguous: Yes
Permitted: Yes
Wet space: No
Addition: No
Conversion: No