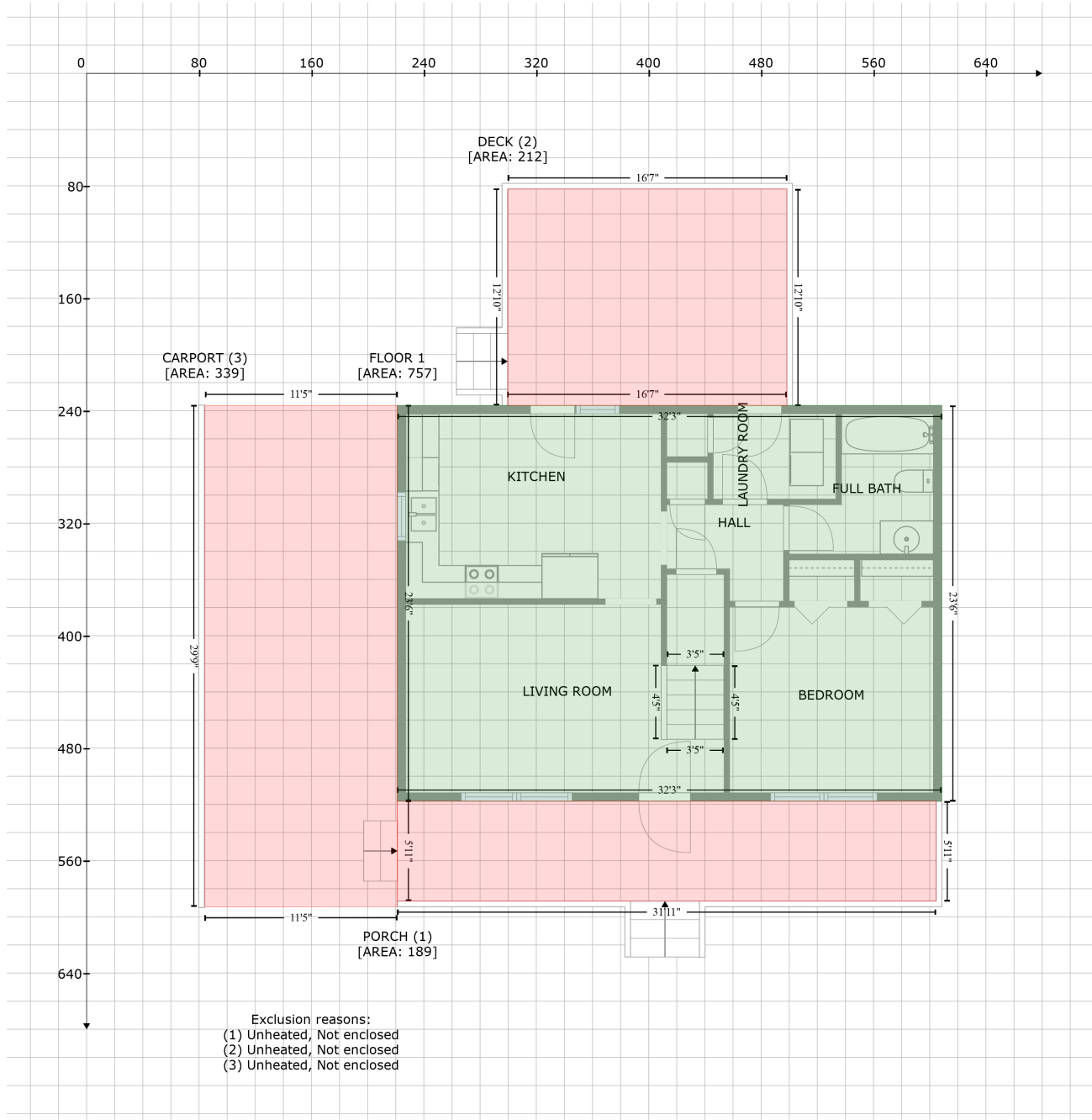


116 West Patterson Avenue, Liberty, Randolph County, North Carolina, United States, 27298

Gross Living Area: 1074 sq. ft



| Space | Area (sq. ft) | Calculation <small>Coordinate Polygon Area Algorithm using inches</small> |
|----------------------------|---------------|--|
| FLOOR 1 (Living area) | 757 | $-((608.6 + 608.6) * (236.2 - 517.7) + (608.6 + 221.1) * (517.7 - 517.7) + (221.1 + 221.1) * (517.7 - 236.2) + (221.1 + 608.6) * (236.2 - 236.2)) * 0.5 * 0.00694$ |
| PORCH (Non-living area) | 189 | $-((604.6 + 604.6) * (517.7 - 588.8) + (604.6 + 221.2) * (588.8 - 588.8) + (221.2 + 221.1) * (588.8 - 517.7) + (221.1 + 604.6) * (517.7 - 517.7)) * 0.5 * 0.00694$ |
| DECK (Non-living area) | 212 | $-((498.4 + 498.4) * (82.3 - 236.2) + (498.4 + 299.7) * (236.2 - 236.2) + (299.7 + 299.7) * (236.2 - 82.3) + (299.7 + 498.4) * (82.3 - 82.3)) * 0.5 * 0.00694$ |

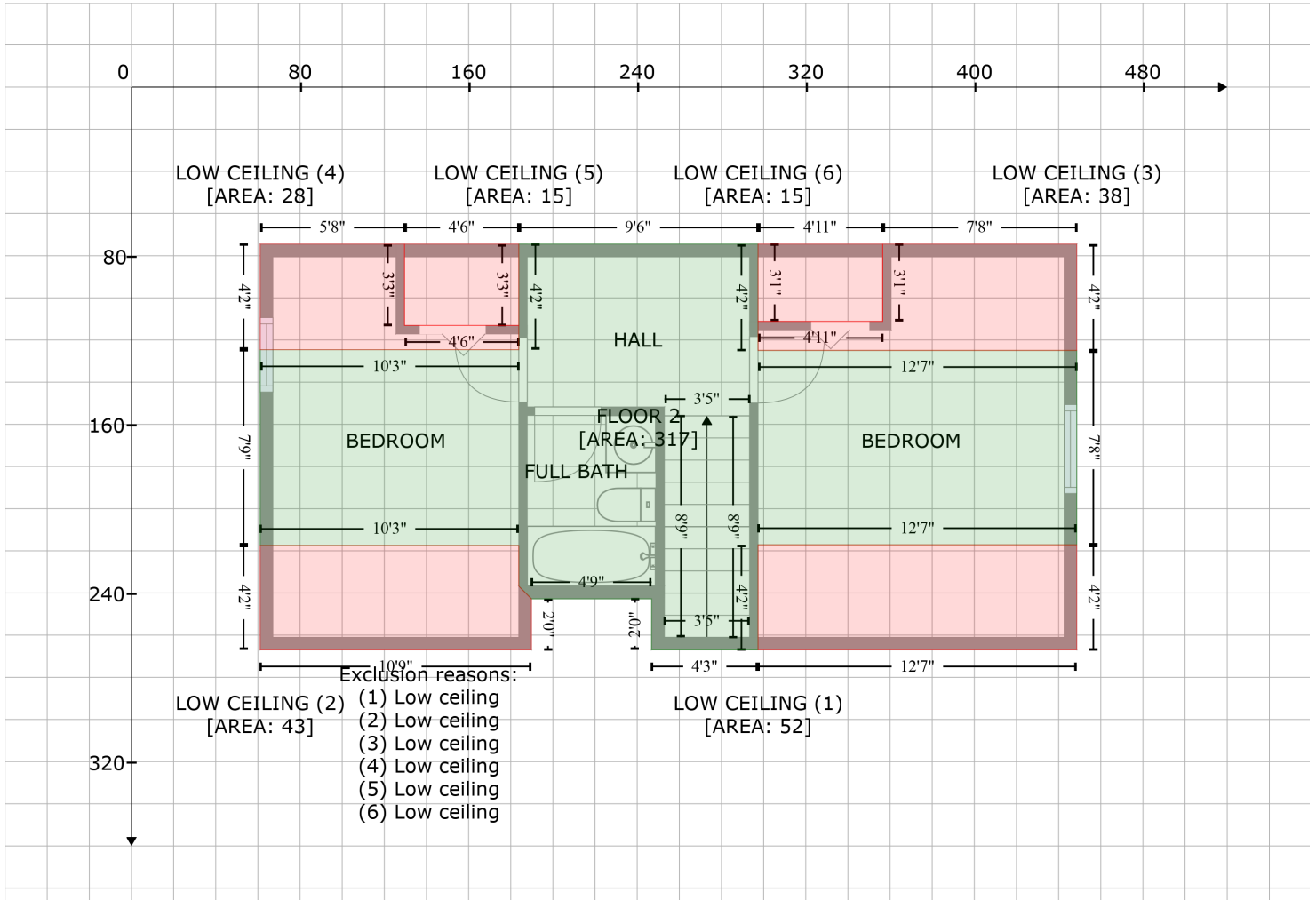
116 West Patterson Avenue, Liberty, Randolph County, North Carolina, United States, 27298

Gross Living Area: 1074 sq. ft

| Space | Area (sq. ft) | Calculation <small>Coordinate Polygon Area Algorithm using inches</small> |
|------------------------------|---------------|---|
| CARPORT (Non-living area) | 339 | $-\left(\left(221.1 + 221.1\right) * \left(236.2 - 517.7\right) + \left(221.1 + 221.2\right) * \left(517.7 - 588.8\right) + \left(221.2 + 221.2\right) * \left(588.8 - 592.8\right) + \left(221.2 + 84.1\right) * \left(592.8 - 592.9\right) + \left(84.1 + 84.1\right) * \left(592.9 - 236.2\right) + \left(84.1 + 221.1\right) * \left(236.2 - 236.2\right)\right) * 0.5 * 0.00694$ |

116 West Patterson Avenue, Liberty, Randolph County, North Carolina, United States, 27298

Gross Living Area: 1074 sq. ft



| Space | Area (sq. ft) | Calculation <small>Coordinate Polygon Area Algorithm using inches</small> |
|----------------------------------|---------------|---|
| FLOOR 2 (Living area) | 317 | $-\left((297.3 + 297.3) * (74.5 - 125) + (297.3 + 448.6) * (125 - 125) + (448.6 + 448.6) * (125 - 217.1) + (448.6 + 297.3) * (217.1 - 217.1) + (297.3 + 297.3) * (217.1 - 267) + (297.3 + 246.8) * (267 - 267) + (246.8 + 246.9) * (267 - 242.8) + (246.9 + 189.8) * (242.8 - 242.8) + (189.8 + 183.8) * (242.8 - 236.8) + (183.8 + 183.8) * (236.8 - 217.4) + (183.8 + 61.1) * (217.4 - 217.4) + (61.1 + 61.1) * (217.4 - 124.6) + (61.1 + 183.8) * (124.6 - 124.6) + (183.8 + 183.8) * (124.6 - 74.5) + (183.8 + 297.3) * (74.5 - 74.5)\right) * 0.5 * 0.00694$ |
| LOW CEILING (Non-living area) | 52 | $-\left((448.6 + 448.6) * (217.1 - 267) + (448.6 + 297.3) * (267 - 267) + (297.3 + 297.3) * (267 - 217.1) + (297.3 + 448.6) * (217.1 - 217.1)\right) * 0.5 * 0.00694$ |
| LOW CEILING (Non-living area) | 43 | $-\left((183.8 + 183.8) * (217.4 - 236.8) + (183.8 + 189.8) * (236.8 - 242.8) + (189.8 + 189.8) * (242.8 - 267) + (189.8 + 61.1) * (267 - 267) + (61.1 + 61.1) * (267 - 217.4) + (61.1 + 183.8) * (217.4 - 217.4)\right) * 0.5 * 0.00694$ |
| LOW CEILING (Non-living area) | 38 | $-\left((448.6 + 448.6) * (74.5 - 125) + (448.6 + 297.3) * (125 - 125) + (297.3 + 297.3) * (125 - 111.1) + (297.3 + 356.5) * (111.1 - 111.1) + (356.5 + 356.5) * (111.1 - 74.5) + (356.5 + 448.6) * (74.5 - 74.5)\right) * 0.5 * 0.00694$ |
| LOW CEILING (Non-living area) | 28 | $-\left((129.6 + 129.6) * (74.5 - 113.1) + (129.6 + 183.8) * (113.1 - 113.1) + (183.8 + 183.8) * (113.1 - 124.6) + (183.8 + 61.1) * (124.6 - 124.6) + (61.1 + 61.1) * (124.6 - 74.5) + (61.1 + 129.6) * (74.5 - 74.5)\right) * 0.5 * 0.00694$ |

116 West Patterson Avenue, Liberty, Randolph County, North Carolina, United States, 27298

Gross Living Area: 1074 sq. ft

| Space | Area (sq. ft) | Calculation <small>Coordinate Polygon Area Algorithm using inches</small> |
|----------------------------------|---------------|--|
| LOW CEILING (Non-living area) | 15 | $-((183.8 + 183.8) * (74.5 - 113.1) + (183.8 + 129.6) * (113.1 - 113.1) + (129.6 + 129.6) * (113.1 - 74.5) + (129.6 + 183.8) * (74.5 - 74.5)) * 0.5 * 0.00694$ |
| LOW CEILING (Non-living area) | 15 | $-((356.5 + 356.5) * (74.5 - 111.1) + (356.5 + 297.3) * (111.1 - 111.1) + (297.3 + 297.3) * (111.1 - 74.5) + (297.3 + 356.5) * (74.5 - 74.5)) * 0.5 * 0.00694$ |