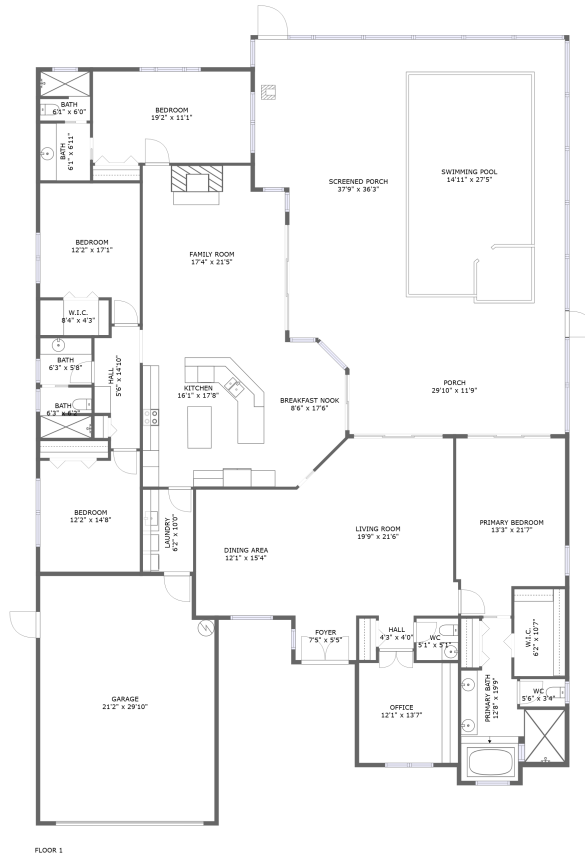


4944 Silverthorne Court, East Lake Woodlands, East Lake, Oldsmar, Pinellas County, Florida,




Property Summary

 **1** garages

 **4** bedrooms

 **3** bathrooms

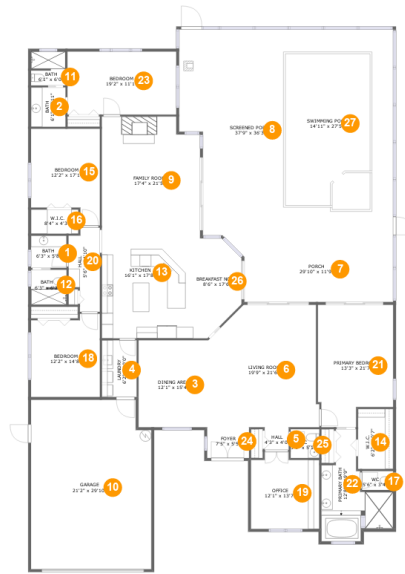
 **1** half baths

 **1** floors

 **3,282** Gross Living Area sqft

 **5,180** total sqft

4944 Silverthorne Court, East Lake Woodlands, East Lake, Oldsmar, Pinellas County, Florida,



Room Dimensions

Floor 1

Total sqft: 5180

Living area: 3282

| # | Room name | Dimensions | Area (sqft) | Counted as Living Area |
|----|----------------|----------------|-------------|------------------------|
| 1 | Bath | 6'3" x 5'8" | 36 sq. ft | Yes |
| 2 | Bath | 6'1" x 6'11" | 42 sq. ft | Yes |
| 3 | Dining Area | 12'1" x 15'4" | 185 sq. ft | Yes |
| 4 | Laundry | 6'2" x 10'0" | 61 sq. ft | Yes |
| 5 | Hall | 4'3" x 4'0" | 17 sq. ft | Yes |
| 6 | Living Room | 19'9" x 21'6" | 395 sq. ft | Yes |
| 7 | Porch | 29'10" x 11'9" | 314 sq. ft | No |
| 8 | Screened Porch | 37'9" x 36'3" | 1292 sq. ft | No |
| 9 | Family Room | 17'4" x 21'5" | 358 sq. ft | Yes |
| 10 | Garage | 21'2" x 29'10" | 617 sq. ft | No |
| 11 | Bath | 6'1" x 6'0" | 35 sq. ft | Yes |

Scan captured on Wed, 23 Oct 2024 01:39:30 GMT

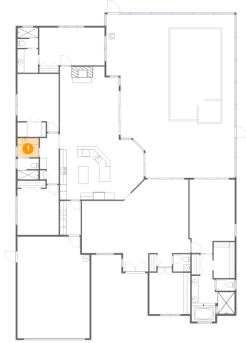
Information is calculated by CubiCasa technology; deemed highly reliable but not guaranteed.

**4944 Silverthorne Court, East Lake Woodlands,
East Lake, Oldsmar, Pinellas County, Florida,**

| # | Room name | Dimensions | Area (sqft) | Counted as Living Area |
|----|-----------------|----------------|-------------|------------------------|
| 12 | Bath | 6'3" x 6'2" | 37 sq. ft | Yes |
| 13 | Kitchen | 16'1" x 17'8" | 283 sq. ft | Yes |
| 14 | W.i.c. | 6'2" x 10'7" | 66 sq. ft | Yes |
| 15 | Bedroom | 12'2" x 17'1" | 179 sq. ft | Yes |
| 16 | W.i.c. | 8'4" x 4'3" | 36 sq. ft | Yes |
| 17 | Wc | 5'6" x 3'4" | 18 sq. ft | Yes |
| 18 | Bedroom | 12'2" x 14'8" | 168 sq. ft | Yes |
| 19 | Office | 12'1" x 13'7" | 153 sq. ft | Yes |
| 20 | Hall | 5'6" x 14'10" | 71 sq. ft | Yes |
| 21 | Primary Bedroom | 13'3" x 21'7" | 260 sq. ft | Yes |
| 22 | Primary Bath | 12'8" x 19'9" | 150 sq. ft | Yes |
| 23 | Bedroom | 19'2" x 11'1" | 213 sq. ft | Yes |
| 24 | Foyer | 7'5" x 5'5" | 40 sq. ft | Yes |
| 25 | Wc | 5'1" x 5'1" | 26 sq. ft | Yes |
| 26 | Breakfast Nook | 8'6" x 17'6" | 126 sq. ft | Yes |
| 27 | Swimming Pool | 14'11" x 27'5" | 403 sq. ft | No |

4944 Silverthorne Court, East Lake Woodlands, East Lake, Oldsmar, Pinellas County, Florida,

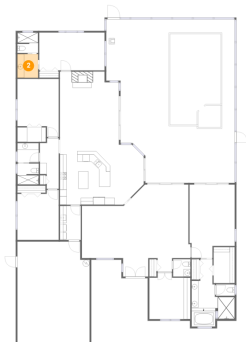
1 Floor 1 - Bath



Dimensions: 6'3" x 5'8"
Area: 36 sq. ft
Counted as Living Area:
Yes

Heated: Yes
Finished: Yes
Enclosed: Yes
Contiguous:
Yes
Permitted: Yes
Wet Space: Yes
Addition: No
Conversion: No

2 Floor 1 - Bath

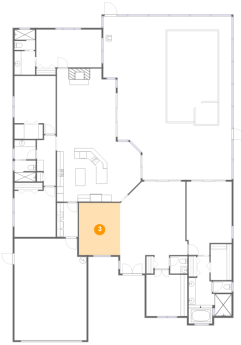


Dimensions: 6'1" x 6'11"
Area: 42 sq. ft
Counted as Living Area:
Yes

Heated: Yes
Finished: Yes
Enclosed: Yes
Contiguous:
Yes
Permitted: Yes
Wet Space: Yes
Addition: No
Conversion: No

4944 Silverthorne Court, East Lake Woodlands, East Lake, Oldsmar, Pinellas County, Florida,

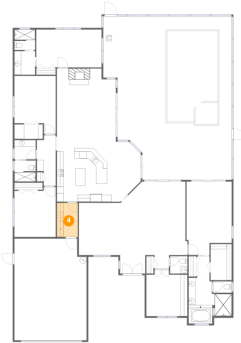
3 Floor 1 - Dining Area



Dimensions: 12'1" x 15'4"
Area: 185 sq. ft
Counted as Living Area:
Yes

Heated: Yes
Finished: Yes
Enclosed: Yes
Contiguous:
Yes
Permitted: Yes
Wet Space: No
Addition: No
Conversion: No

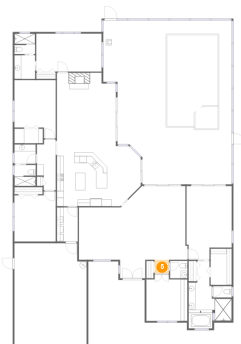
4 Floor 1 - Laundry



Dimensions: 6'2" x 10'0"
Area: 61 sq. ft
Counted as Living Area:
Yes

Heated: Yes
Finished: Yes
Enclosed: Yes
Contiguous:
Yes
Permitted: Yes
Wet Space: No
Addition: No
Conversion: No

5 Floor 1 - Hall

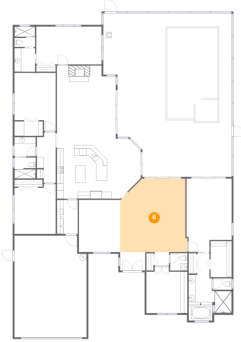


Dimensions: 4'3" x 4'0"
Area: 17 sq. ft
Counted as Living Area:
Yes

Heated: Yes
Finished: Yes
Enclosed: Yes
Contiguous:
Yes
Permitted: Yes
Wet Space: No
Addition: No
Conversion: No

4944 Silverthorne Court, East Lake Woodlands, East Lake, Oldsmar, Pinellas County, Florida,

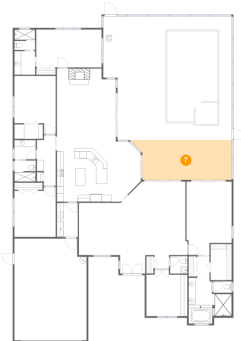
6 Floor 1 - Living Room



Dimensions: 19'9" x 21'6"
Area: 395 sq. ft
Counted as Living Area:
Yes

Heated: Yes
Finished: Yes
Enclosed: Yes
Contiguous:
Yes
Permitted: Yes
Wet Space: No
Addition: No
Conversion: No

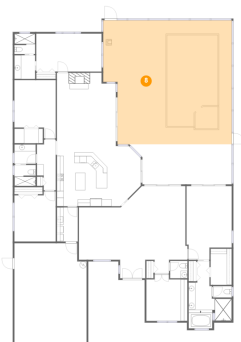
7 Floor 1 - Porch



Dimensions: 29'10" x 11'9"
Area: 314 sq. ft
Counted as Living Area: No

Heated: No
Finished: Yes
Enclosed: No
Contiguous: Yes
Permitted: Yes
Wet Space: No
Addition: No
Conversion: No

8 Floor 1 - Screened Porch

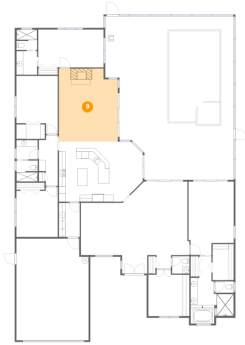


Dimensions: 37'9" x 36'3"
Area: 1292 sq. ft
Counted as Living Area: No

Heated: No
Finished: Yes
Enclosed: No
Contiguous: Yes
Permitted: Yes
Wet Space: No
Addition: No
Conversion: No

4944 Silverthorne Court, East Lake Woodlands, East Lake, Oldsmar, Pinellas County, Florida,

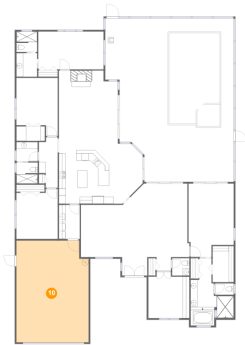
9 Floor 1 - Family Room



Dimensions: 17'4" x 21'5"
Area: 358 sq. ft
Counted as Living Area:
Yes

Heated: Yes
Finished: Yes
Enclosed: Yes
Contiguous:
Yes
Permitted: Yes
Wet Space: No
Addition: No
Conversion: No

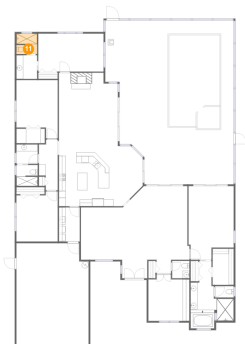
10 Floor 1 - Garage



Dimensions: 21'2" x 29'10"
Area: 617 sq. ft
Counted as Living Area: No

Heated: No
Finished: No
Enclosed: Yes
Contiguous: Yes
Permitted: Yes
Wet Space: No
Addition: No
Conversion: No

11 Floor 1 - Bath

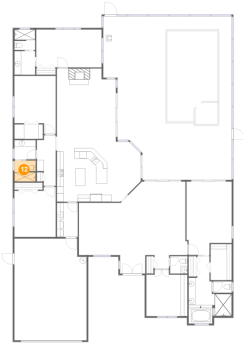


Dimensions: 6'1" x 6'0"
Area: 35 sq. ft
Counted as Living Area:
Yes

Heated: Yes
Finished: Yes
Enclosed: Yes
Contiguous:
Yes
Permitted: Yes
Wet Space: Yes
Addition: No
Conversion: No

4944 Silverthorne Court, East Lake Woodlands, East Lake, Oldsmar, Pinellas County, Florida,

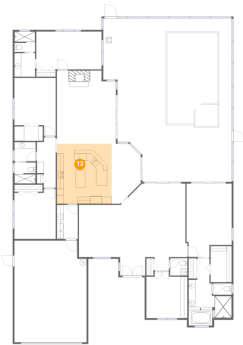
12 Floor 1 - Bath



Dimensions: 6'3" x 6'2"
Area: 37 sq. ft
Counted as Living Area:
Yes

Heated: Yes
Finished: Yes
Enclosed: Yes
Contiguous:
Yes
Permitted: Yes
Wet Space: Yes
Addition: No
Conversion: No

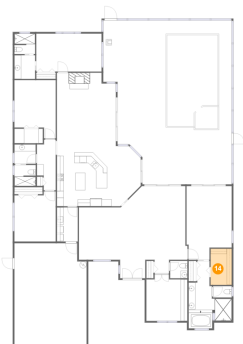
13 Floor 1 - Kitchen



Dimensions: 16'1" x 17'8"
Area: 283 sq. ft
Counted as Living Area:
Yes

Heated: Yes
Finished: Yes
Enclosed: Yes
Contiguous:
Yes
Permitted: Yes
Wet Space: No
Addition: No
Conversion: No

14 Floor 1 - W.i.c.

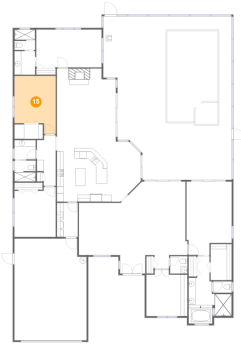


Dimensions: 6'2" x 10'7"
Area: 66 sq. ft
Counted as Living Area:
Yes

Heated: Yes
Finished: Yes
Enclosed: Yes
Contiguous:
Yes
Permitted: Yes
Wet Space: No
Addition: No
Conversion: No

4944 Silverthorne Court, East Lake Woodlands, East Lake, Oldsmar, Pinellas County, Florida,

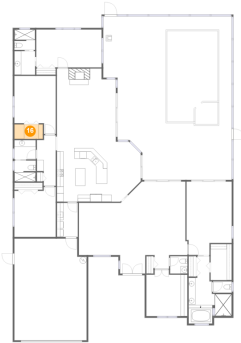
15 Floor 1 - Bedroom



Dimensions: 12'2" x 17'1"
Area: 179 sq. ft
Counted as Living Area:
Yes

Heated: Yes
Finished: Yes
Enclosed: Yes
Contiguous:
Yes
Permitted: Yes
Wet Space: No
Addition: No
Conversion: No

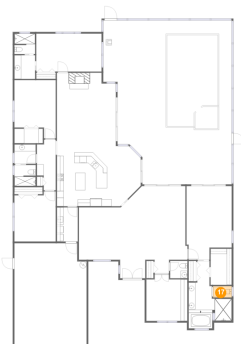
16 Floor 1 - W.i.c.



Dimensions: 8'4" x 4'3"
Area: 36 sq. ft
Counted as Living Area:
Yes

Heated: Yes
Finished: Yes
Enclosed: Yes
Contiguous:
Yes
Permitted: Yes
Wet Space: No
Addition: No
Conversion: No

17 Floor 1 - Wc

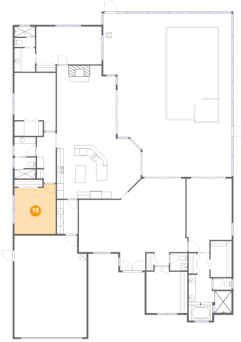


Dimensions: 5'6" x 3'4"
Area: 18 sq. ft
Counted as Living Area:
Yes

Heated: Yes
Finished: Yes
Enclosed: Yes
Contiguous:
Yes
Permitted: Yes
Wet Space: Yes
Addition: No
Conversion: No

4944 Silverthorne Court, East Lake Woodlands, East Lake, Oldsmar, Pinellas County, Florida,

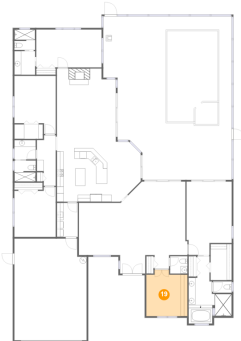
18 Floor 1 - Bedroom



Dimensions: 12'2" x 14'8"
Area: 168 sq. ft
Counted as Living Area:
Yes

Heated: Yes
Finished: Yes
Enclosed: Yes
Contiguous:
Yes
Permitted: Yes
Wet Space: No
Addition: No
Conversion: No

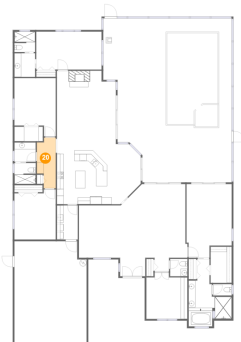
19 Floor 1 - Office



Dimensions: 12'1" x 13'7"
Area: 153 sq. ft
Counted as Living Area:
Yes

Heated: Yes
Finished: Yes
Enclosed: Yes
Contiguous:
Yes
Permitted: Yes
Wet Space: No
Addition: No
Conversion: No

20 Floor 1 - Hall

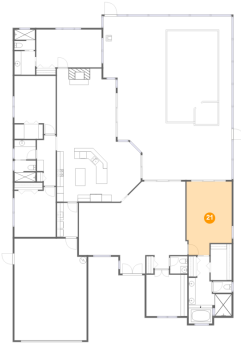


Dimensions: 5'6" x 14'10"
Area: 71 sq. ft
Counted as Living Area:
Yes

Heated: Yes
Finished: Yes
Enclosed: Yes
Contiguous:
Yes
Permitted: Yes
Wet Space: No
Addition: No
Conversion: No

4944 Silverthorne Court, East Lake Woodlands, East Lake, Oldsmar, Pinellas County, Florida,

21 Floor 1 - Primary Bedroom



Dimensions: 13'3" x 21'7"
Area: 260 sq. ft
Counted as Living Area:
Yes

Heated: Yes
Finished: Yes
Enclosed: Yes
Contiguous:
Yes
Permitted: Yes
Wet Space: No
Addition: No
Conversion: No

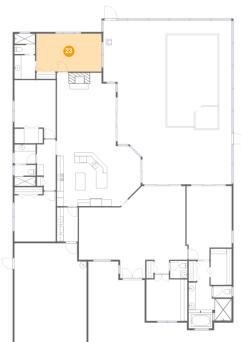
22 Floor 1 - Primary Bath



Dimensions: 12'8" x 19'9"
Area: 150 sq. ft
Counted as Living Area:
Yes

Heated: Yes
Finished: Yes
Enclosed: Yes
Contiguous:
Yes
Permitted: Yes
Wet Space: Yes
Addition: No
Conversion: No

23 Floor 1 - Bedroom

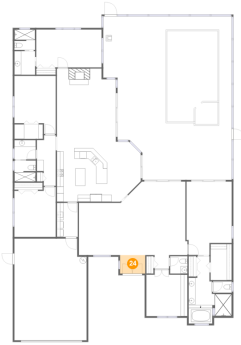


Dimensions: 19'2" x 11'1"
Area: 213 sq. ft
Counted as Living Area:
Yes

Heated: Yes
Finished: Yes
Enclosed: Yes
Contiguous:
Yes
Permitted: Yes
Wet Space: No
Addition: No
Conversion: No

4944 Silverthorne Court, East Lake Woodlands, East Lake, Oldsmar, Pinellas County, Florida,

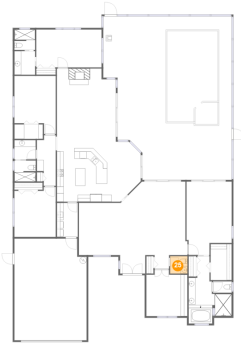
24 Floor 1 - Foyer



Dimensions: 7'5" x 5'5"
Area: 40 sq. ft
Counted as Living Area:
Yes

Heated: Yes
Finished: Yes
Enclosed: Yes
Contiguous:
Yes
Permitted: Yes
Wet Space: No
Addition: No
Conversion: No

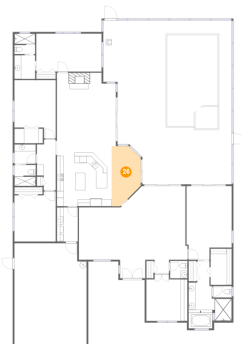
25 Floor 1 - Wc



Dimensions: 5'1" x 5'1"
Area: 26 sq. ft
Counted as Living Area:
Yes

Heated: Yes
Finished: Yes
Enclosed: Yes
Contiguous:
Yes
Permitted: Yes
Wet Space: Yes
Addition: No
Conversion: No

26 Floor 1 - Breakfast Nook

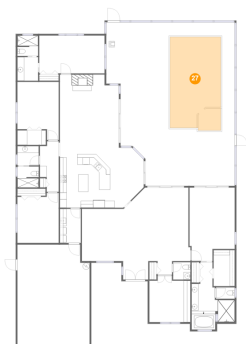


Dimensions: 8'6" x 17'6"
Area: 126 sq. ft
Counted as Living Area:
Yes

Heated: Yes
Finished: Yes
Enclosed: Yes
Contiguous:
Yes
Permitted: Yes
Wet Space: No
Addition: No
Conversion: No

4944 Silverthorne Court, East Lake Woodlands, East Lake, Oldsmar, Pinellas County, Florida,

27 Floor 1 - Swimming Pool



Dimensions: 14'11" x 27'5"
Area: 403 sq. ft
Counted as Living Area: No

Heated: No
Finished: No
Enclosed: No
Contiguous: Yes
Permitted: No
Wet Space: No
Addition: No
Conversion: No