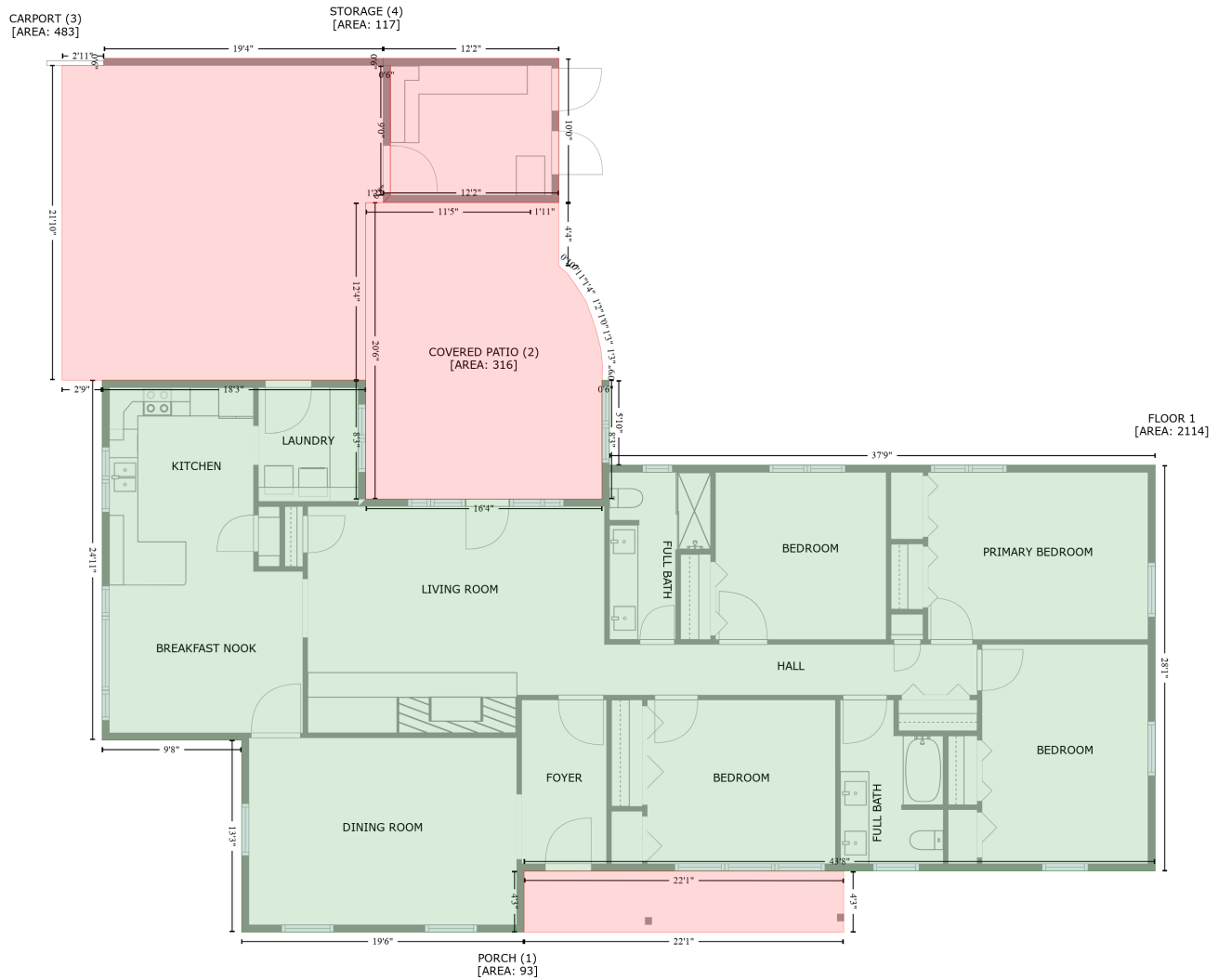


401 Kenwood Avenue, Cherryville, Gaston County, North Carolina, United States, 28021

Gross Living Area: 2114 sq. ft



Space	Area (sq. ft)	Calculation
FLOOR 1 (Living area)	2114	Coordinate Polygon Area Algorithm using inches $-((237.9 + 237.9) * (342.8 - 441.6) + (237.9 + 434.2) * (441.6 - 441.6) + (434.2 + 434.2) * (441.6 - 342.8) + (434.2 + 440.2) * (342.8 - 342.8) + (440.2 + 440.2) * (342.8 - 413.3) + (440.2 + 893.4) * (413.3 - 413.3) + (893.4 + 893.4) * (413.3 - 750.5) + (893.4 + 369.4) * (750.5 - 750.5) + (369.4 + 369.4) * (750.5 - 801.3) + (369.4 + 135) * (801.3 - 801.3) + (135 + 135) * (801.3 - 641.8) + (135 + 19.1) * (641.8 - 641.8) + (19.1 + 19.1) * (641.8 - 342.8) + (19.1 + 237.9) * (342.8 - 342.8)) * 0.5 + 0.00694$
PORCH (Non-living area)	93	$-((369.4 + 634.7) * (750.5 - 750.7) + (634.7 + 634.7) * (750.7 - 801.3) + (634.7 + 369.4) * (801.3 - 801.3) + (369.4 + 369.4) * (801.3 - 750.5)) * 0.5 + 0.00694$
COVERED PATIO (Non-living area)	316	$-((374.9 + 398.1) * (195.2 - 195.3) + (398.1 + 398.1) * (195.3 - 247.7) + (398.1 + 405.6) * (247.7 - 254.3) + (405.6 + 412.1) * (254.3 - 263.7) + (412.1 + 420.8) * (263.7 - 277.4) + (420.8 + 425.8) * (277.4 - 290.6) + (425.8 + 429.5) * (290.6 - 302.1) + (429.5 + 433.1) * (302.1 - 316.5) + (433.1 + 434.7) * (316.5 - 331.5) + (434.7 + 434.2) * (331.5 - 340.7) + (434.2 + 434.2) * (340.7 - 441.6) +$

401 Kenwood Avenue, Cherryville, Gaston County, North Carolina, United States, 28021

Gross Living Area: 2114 sq. ft

Space	Area (sq. ft)	Calculation <small>Coordinate Polygon Area Algorithm using inches</small>
CARPORT (Non-living area)	483	$(434.2 + 237.9) * (441.6 - 441.6) + (237.9 + 237.9) * (441.6 - 195.2) + (237.9 + 374.9) * (195.2 - 195.2) * 0.5 * 0.00694$ $-((252.4 + 252.4) * (75.4 - 81.4) + (252.4 + 258.4) * (81.4 - 81.4) + (258.4 + 258.4) * (81.4 - 189.1) + (258.4 + 252.4) * (189.1 - 195.1) + (252.4 + 237.9) * (195.1 - 195.2) + (237.9 + 237.9) * (195.2 - 342.8) + (237.9 + 19.1) * (342.8 - 342.8) + (19.1 + -14.2) * (342.8 - 342.8) + (-14.2 + -14.2) * (342.8 - 81.3) + (-14.2 + 20.5) * (81.3 - 81.3) + (20.5 + 20.5) * (81.3 - 75.4) + (20.5 + 252.4) * (75.4 - 75.4)) * 0.5 * 0.00694$
STORAGE (Non-living area)	117	$-((398.4 + 398.4) * (75.4 - 195.1) + (398.4 + 252.4) * (195.1 - 195.1) + (252.4 + 258.4) * (195.1 - 189.1) + (258.4 + 258.4) * (189.1 - 81.4) + (258.4 + 252.4) * (81.4 - 81.4) + (252.4 + 252.4) * (81.4 - 75.4) + (252.4 + 398.4) * (75.4 - 75.4)) * 0.5 * 0.00694$