


3133 Fleming Place, Forest Grove, Washington County, Oregon, United States, 97116



Property summary


 **1** Garages

 **4** Bedrooms

 **3** Bathrooms

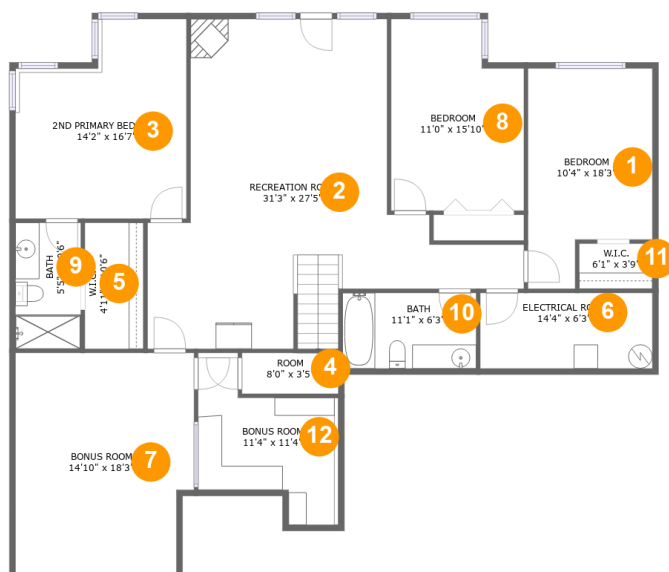
 **1** Half baths

 **2** Floors

 **3,817** Gross living area sqft

 **5,177** Total sqft

3133 Fleming Place, Forest Grove, Washington County, Oregon, United States, 97116



Room dimensions

Floor 1

Total sqft: 1926 Living area: 1826

#		Dimensions	sqft	Counted as living area
1	Bedroom	10'4" x 18'3"	163 sq. ft	Yes
2	Recreation Room	31'3" x 27'5"	514 sq. ft	Yes
3	2nd Primary Bedroom	14'2" x 16'7"	207 sq. ft	Yes
4	Room	8'0" x 3'5"	27 sq. ft	Yes
5	W.I.C.	4'11" x 10'6"	51 sq. ft	Yes
6	Electrical Room	14'4" x 6'3"	90 sq. ft	No
7	Bonus Room	14'10" x 18'3"	261 sq. ft	Yes
8	Bedroom	11'0" x 15'10"	161 sq. ft	Yes
9	Bath	5'5" x 10'6"	57 sq. ft	Yes
10	Bath	11'1" x 6'3"	70 sq. ft	Yes
11	W.I.C.	6'1" x 3'9"	23 sq. ft	Yes

Scan captured on Wed, 02 Apr 2025 01:17:43 GMT

Information is calculated by Cubicasa technology deemed highly reliable but not guaranteed.

3133 Fleming Place, Forest Grove, Washington County, Oregon, United States, 97116

#		Dimensions	sqft	Counted as living area
12	Bonus Room	11'4" x 11'4"	113 sq. ft	Yes

3133 Fleming Place, Forest Grove, Washington County, Oregon, United States, 97116



Room dimensions

Floor 2

Total sqft: 3251 Living area: 1991

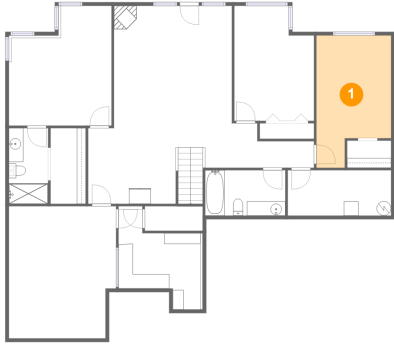
#		Dimensions	sqft	Counted as living area
13	Balcony	19'11" x 14'5"	259 sq. ft	No
14	WC	5'0" x 5'11"	30 sq. ft	Yes
15	WC	5'1" x 2'10"	14 sq. ft	Yes
16	Pantry	4'8" x 4'4"	17 sq. ft	Yes
17	W.I.C.	12'7" x 7'6"	94 sq. ft	Yes
18	Foyer	10'11" x 8'6"	84 sq. ft	Yes
19	Dining Area	14'5" x 13'0"	187 sq. ft	Yes
20	Hall	22'0" x 14'2"	222 sq. ft	Yes
21	Laundry	10'6" x 7'6"	79 sq. ft	Yes
22	Living Room	14'0" x 12'9"	179 sq. ft	Yes
23	Living Room	15'10" x 18'3"	282 sq. ft	Yes

**3133 Fleming Place, Forest Grove, Washington
County, Oregon, United States, 97116**

#		Dimensions	sqft	Counted as living area
24	Primary Bath	10'11" x 13'0"	115 sq. ft	Yes
25	Kitchen	15'2" x 20'1"	254 sq. ft	Yes
26	Primary Bedroom	16'3" x 17'7"	245 sq. ft	Yes
27	Garage	36'4" x 25'1"	793 sq. ft	No
28	Balcony	13'10" x 11'11"	166 sq. ft	No

3133 Fleming Place, Forest Grove, Washington County, Oregon, United States, 97116

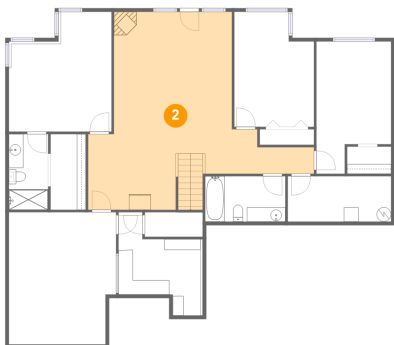
1 Floor 1 - Bedroom



Dimensions: 10'4" x 18'3"
Area: 163 sq. ft
Counted as living area: Yes

Heated: Yes
Finished: Yes
Enclosed: Yes
Contiguous: Yes
Permitted: Yes
Wet space: No
Addition: No
Conversion: No

2 Floor 1 - Recreation Room

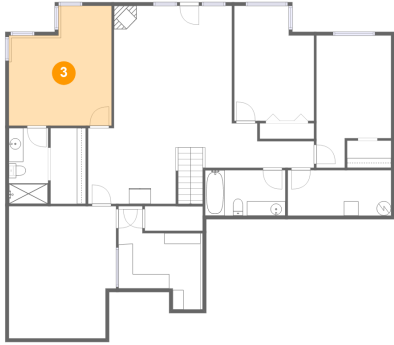


Dimensions: 31'3" x 27'5"
Area: 514 sq. ft
Counted as living area: Yes

Heated: Yes
Finished: Yes
Enclosed: Yes
Contiguous: Yes
Permitted: Yes
Wet space: No
Addition: No
Conversion: No

3133 Fleming Place, Forest Grove, Washington County, Oregon, United States, 97116

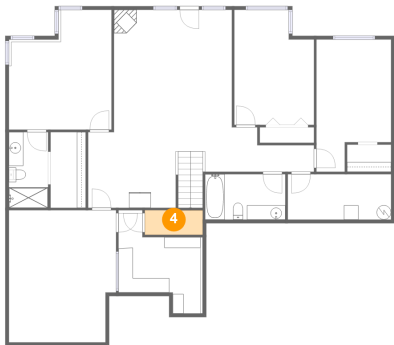
3 Floor 1 - 2nd Primary Bedroom



Dimensions: 14'2" x 16'7"
Area: 207 sq. ft
Counted as living area: Yes

Heated: Yes
Finished: Yes
Enclosed: Yes
Contiguous: Yes
Permitted: Yes
Wet space: No
Addition: No
Conversion: No

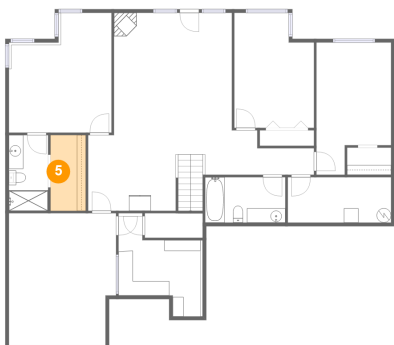
4 Floor 1 - Room



Dimensions: 8'0" x 3'5"
Area: 27 sq. ft
Counted as living area: Yes

Heated: Yes
Finished: Yes
Enclosed: Yes
Contiguous: Yes
Permitted: Yes
Wet space: No
Addition: No
Conversion: No

5 Floor 1 - W.I.C.

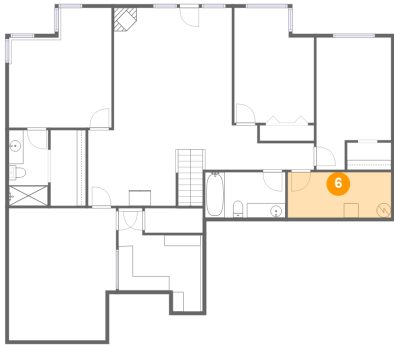


Dimensions: 4'11" x 10'6"
Area: 51 sq. ft
Counted as living area: Yes

Heated: Yes
Finished: Yes
Enclosed: Yes
Contiguous: Yes
Permitted: Yes
Wet space: No
Addition: No
Conversion: No

3133 Fleming Place, Forest Grove, Washington County, Oregon, United States, 97116

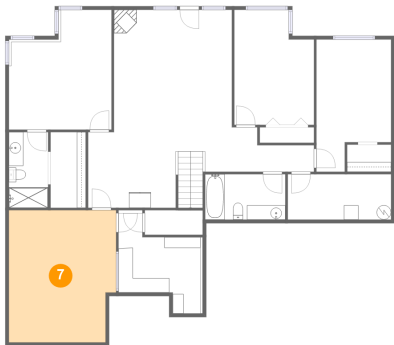
6 Floor 1 - Electrical Room



Dimensions: 14'4" x 6'3"
Area: 90 sq. ft
Counted as living area: No

Heated: No
Finished: Yes
Enclosed: Yes
Contiguous: Yes
Permitted: Yes
Wet space: No
Addition: No
Conversion: No

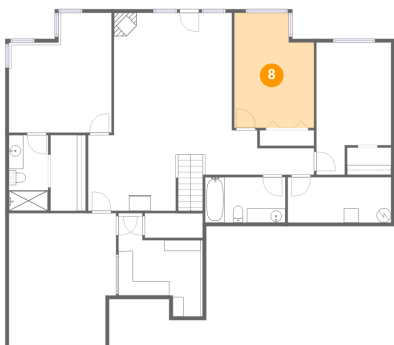
7 Floor 1 - Bonus Room



Dimensions: 14'10" x 18'3"
Area: 261 sq. ft
Counted as living area: Yes

Heated: Yes
Finished: Yes
Enclosed: Yes
Contiguous: Yes
Permitted: Yes
Wet space: No
Addition: No
Conversion: No

8 Floor 1 - Bedroom

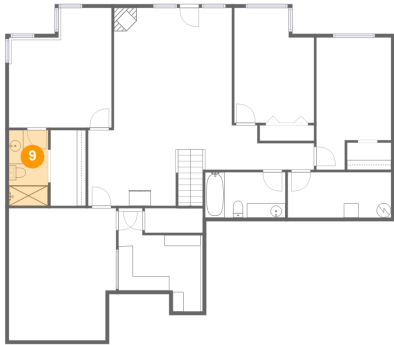


Dimensions: 11'0" x 15'10"
Area: 161 sq. ft
Counted as living area: Yes

Heated: Yes
Finished: Yes
Enclosed: Yes
Contiguous: Yes
Permitted: Yes
Wet space: No
Addition: No
Conversion: No

3133 Fleming Place, Forest Grove, Washington County, Oregon, United States, 97116

9 Floor 1 - Bath



Dimensions: 5'5" x 10'6"
Area: 57 sq. ft
Counted as living area: Yes

Heated: Yes
Finished: Yes
Enclosed: Yes
Contiguous: Yes
Permitted: Yes
Wet space: Yes
Addition: No
Conversion: No

10 Floor 1 - Bath



Dimensions: 11'1" x 6'3"
Area: 70 sq. ft
Counted as living area: Yes

Heated: Yes
Finished: Yes
Enclosed: Yes
Contiguous: Yes
Permitted: Yes
Wet space: Yes
Addition: No
Conversion: No

11 Floor 1 - W.I.C.

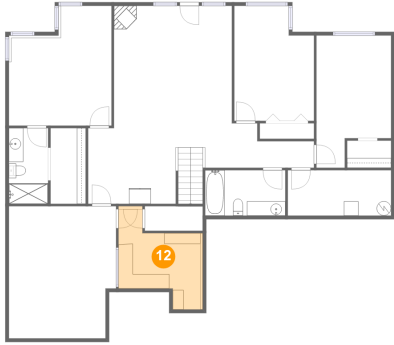


Dimensions: 6'1" x 3'9"
Area: 23 sq. ft
Counted as living area: Yes

Heated: Yes
Finished: Yes
Enclosed: Yes
Contiguous: Yes
Permitted: Yes
Wet space: No
Addition: No
Conversion: No

3133 Fleming Place, Forest Grove, Washington County, Oregon, United States, 97116

12 Floor 1 - Bonus Room



Dimensions: 11'4" x 11'4"
Area: 113 sq. ft
Counted as living area: Yes

Heated: Yes
Finished: Yes
Enclosed: Yes
Contiguous: Yes
Permitted: Yes
Wet space: No
Addition: No
Conversion: No

13 Floor 2 - Balcony



Dimensions: 19'11" x 14'5"
Area: 259 sq. ft
Counted as living area: No

Heated: No
Finished: Yes
Enclosed: No
Contiguous: Yes
Permitted: Yes
Wet space: No
Addition: No
Conversion: No

14 Floor 2 - WC



Dimensions: 5'0" x 5'11"
Area: 30 sq. ft
Counted as living area: Yes

Heated: Yes
Finished: Yes
Enclosed: Yes
Contiguous: Yes
Permitted: Yes
Wet space: Yes
Addition: No
Conversion: No

**3133 Fleming Place, Forest Grove, Washington
County, Oregon, United States, 97116**

15 Floor 2 - WC



Dimensions: 5'1" x 2'10"
Area: 14 sq. ft
Counted as living area: Yes

Heated: Yes
Finished: Yes
Enclosed: Yes
Contiguous: Yes
Permitted: Yes
Wet space: Yes
Addition: No
Conversion: No

16 Floor 2 - Pantry



Dimensions: 4'8" x 4'4"
Area: 17 sq. ft
Counted as living area: Yes

Heated: Yes
Finished: Yes
Enclosed: Yes
Contiguous: Yes
Permitted: Yes
Wet space: No
Addition: No
Conversion: No

17 Floor 2 - W.I.C.



Dimensions: 12'7" x 7'6"
Area: 94 sq. ft
Counted as living area: Yes

Heated: Yes
Finished: Yes
Enclosed: Yes
Contiguous: Yes
Permitted: Yes
Wet space: No
Addition: No
Conversion: No

3133 Fleming Place, Forest Grove, Washington County, Oregon, United States, 97116

18 Floor 2 - Foyer



Dimensions: 10'11" x 8'6"
Area: 84 sq. ft
Counted as living area: Yes

Heated: Yes
Finished: Yes
Enclosed: Yes
Contiguous: Yes
Permitted: Yes
Wet space: No
Addition: No
Conversion: No

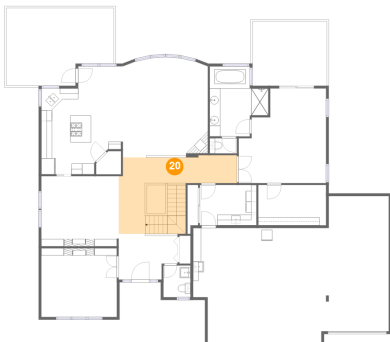
19 Floor 2 - Dining Area



Dimensions: 14'5" x 13'0"
Area: 187 sq. ft
Counted as living area: Yes

Heated: Yes
Finished: Yes
Enclosed: Yes
Contiguous: Yes
Permitted: Yes
Wet space: No
Addition: No
Conversion: No

20 Floor 2 - Hall



Dimensions: 22'0" x 14'2"
Area: 222 sq. ft
Counted as living area: Yes

Heated: Yes
Finished: Yes
Enclosed: Yes
Contiguous: Yes
Permitted: Yes
Wet space: No
Addition: No
Conversion: No

3133 Fleming Place, Forest Grove, Washington County, Oregon, United States, 97116

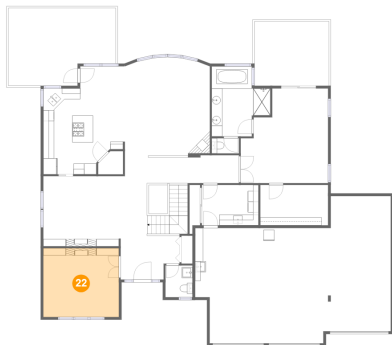
21 Floor 2 - Laundry



Dimensions: 10'6" x 7'6"
Area: 79 sq. ft
Counted as living area: Yes

Heated: Yes
Finished: Yes
Enclosed: Yes
Contiguous: Yes
Permitted: Yes
Wet space: No
Addition: No
Conversion: No

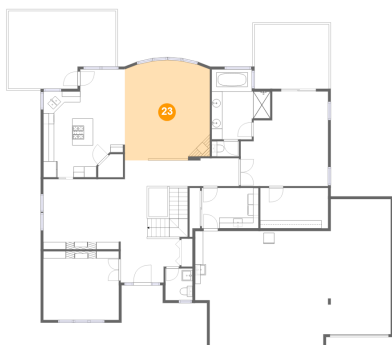
22 Floor 2 - Living Room



Dimensions: 14'0" x 12'9"
Area: 179 sq. ft
Counted as living area: Yes

Heated: Yes
Finished: Yes
Enclosed: Yes
Contiguous: Yes
Permitted: Yes
Wet space: No
Addition: No
Conversion: No

23 Floor 2 - Living Room



Dimensions: 15'10" x 18'3"
Area: 282 sq. ft
Counted as living area: Yes

Heated: Yes
Finished: Yes
Enclosed: Yes
Contiguous: Yes
Permitted: Yes
Wet space: No
Addition: No
Conversion: No

3133 Fleming Place, Forest Grove, Washington County, Oregon, United States, 97116

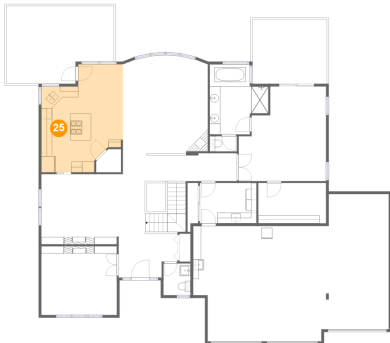
24 Floor 2 - Primary Bath



Dimensions: 10'11" x 13'0"
Area: 115 sq. ft
Counted as living area: Yes

Heated: Yes
Finished: Yes
Enclosed: Yes
Contiguous: Yes
Permitted: Yes
Wet space: Yes
Addition: No
Conversion: No

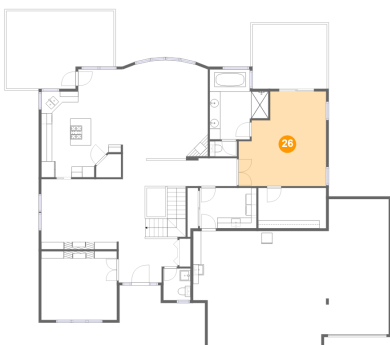
25 Floor 2 - Kitchen



Dimensions: 15'2" x 20'1"
Area: 254 sq. ft
Counted as living area: Yes

Heated: Yes
Finished: Yes
Enclosed: Yes
Contiguous: Yes
Permitted: Yes
Wet space: No
Addition: No
Conversion: No

26 Floor 2 - Primary Bedroom



Dimensions: 16'3" x 17'7"
Area: 245 sq. ft
Counted as living area: Yes

Heated: Yes
Finished: Yes
Enclosed: Yes
Contiguous: Yes
Permitted: Yes
Wet space: No
Addition: No
Conversion: No

3133 Fleming Place, Forest Grove, Washington County, Oregon, United States, 97116

27 Floor 2 - Garage



Dimensions: 36'4" x 25'1"
Area: 793 sq. ft
Counted as living area: No

Heated: No
Finished: No
Enclosed: Yes
Contiguous: Yes
Permitted: Yes
Wet space: No
Addition: No
Conversion: No

28 Floor 2 - Balcony



Dimensions: 13'10" x 11'11"
Area: 166 sq. ft
Counted as living area: No

Heated: No
Finished: Yes
Enclosed: No
Contiguous: Yes
Permitted: Yes
Wet space: No
Addition: No
Conversion: No