

Home report

21211 Virginia Pine Terrace, Brink, Germantown, Montgomery County, Maryland, United States, 20876



Total GLA: 2517 sq. ft

Below Ground: 916 sq. ft, Floor 2: 1249 sq. ft, Floor 3: 1268 sq. ft
Excluded: Utility 217 sq. ft, Garage 387 sq. ft, Balcony 205 sq. ft, Embedded window 11 sq. ft, Open to below 233 sq. ft

Property summary

 **3** Floors

 **5** Bedrooms

 **3** Bathrooms

Home report

21211 Virginia Pine Terrace, Brink, Germantown, Montgomery County, Maryland, United States, 20876



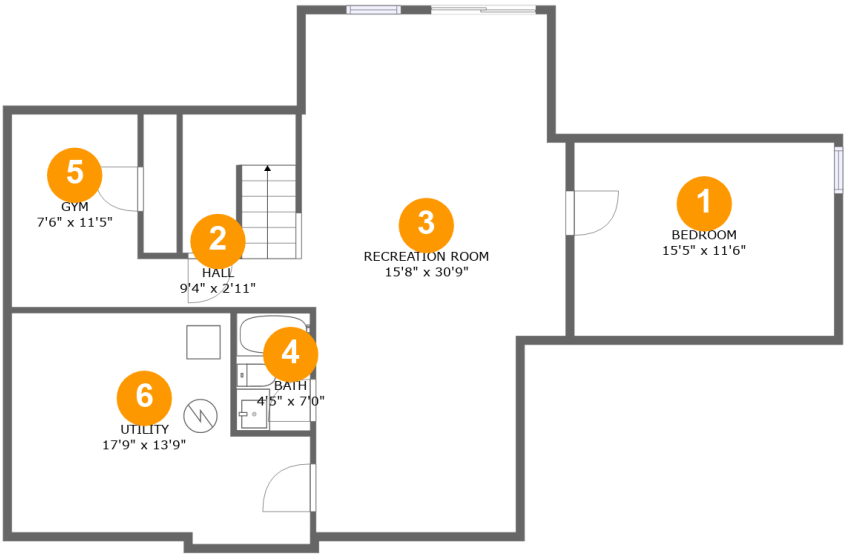
1
Half baths



1
Garages

Home report

21211 Virginia Pine Terrace, Brink, Germantown, Montgomery County, Maryland, United States, 20876



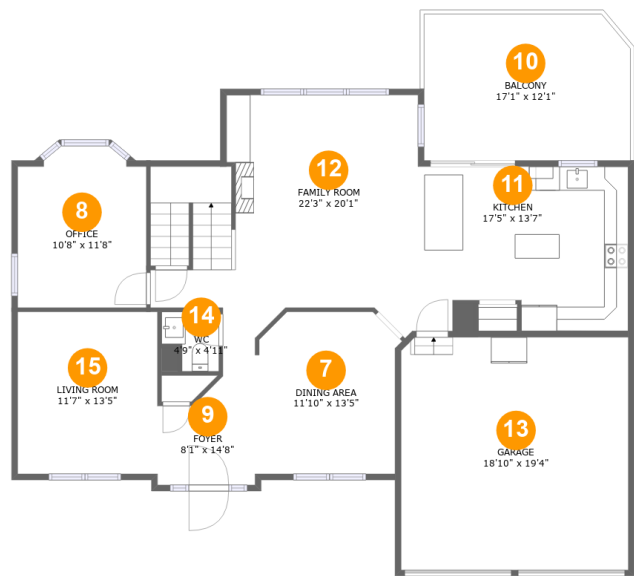
Room dimensions

Floor 1 Below ground Total:916sqft Excluded: 217sqft

#		Max Dimensions	sqft	Included
1	Bedroom	15'5" x 11'6"	177 sq. ft	Yes
2	Hall	9'4" x 2'11"	84 sq. ft	Yes
3	Recreation Room	15'8" x 30'9"	426 sq. ft	Yes
4	Bath	4'5" x 7'0"	31 sq. ft	Yes
5	Gym	7'6" x 11'5"	86 sq. ft	Yes
6	Utility	17'9" x 13'9"	201 sq. ft	No

Home report

21211 Virginia Pine Terrace, Brink, Germantown, Montgomery County, Maryland, United States, 20876



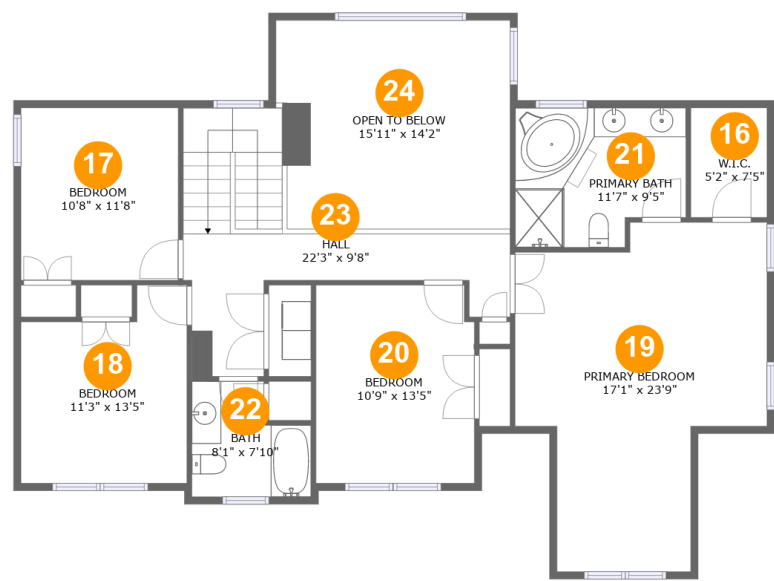
Room dimensions

Floor 2 Total:1249sqft Excluded: 603sqft

#		Max Dimensions	sqft	Included
7	Dining Area	11'10" x 13'5"	151 sq. ft	Yes
8	Office	10'8" x 11'8"	125 sq. ft	Yes
9	Foyer	8'1" x 14'8"	81 sq. ft	Yes
10	Balcony	17'1" x 12'1"	205 sq. ft	No
11	Kitchen	17'5" x 13'7"	224 sq. ft	Yes
12	Family Room	22'3" x 20'1"	357 sq. ft	Yes
13	Garage	18'10" x 19'4"	364 sq. ft	No
14	WC	4'9" x 4'11"	20 sq. ft	Yes
15	Living Room	11'7" x 13'5"	156 sq. ft	Yes

Home report

21211 Virginia Pine Terrace, Brink, Germantown, Montgomery County, Maryland, United States, 20876



Room dimensions

Floor 3 Total:1268sqft Excluded: 233sqft

#		Max Dimensions	sqft	Included
16	W.I.C.	5'2" x 7'5"	39 sq. ft	Yes
17	Bedroom	10'8" x 11'8"	125 sq. ft	Yes
18	Bedroom	11'3" x 13'5"	132 sq. ft	Yes
19	Primary Bedroom	17'1" x 23'9"	311 sq. ft	Yes
20	Bedroom	10'9" x 13'5"	143 sq. ft	Yes
21	Primary Bath	11'7" x 9'5"	102 sq. ft	Yes
22	Bath	8'1" x 7'10"	57 sq. ft	Yes
23	Hall	22'3" x 9'8"	170 sq. ft	Yes
24	Open To Below	15'11" x 14'2"	219 sq. ft	No

1 Floor 1 - Bedroom



Max Dimensions: 15'5" x 11'6"
Calculated Area: 177 sq. ft
Included: Yes

Heated: Yes
Finished: Yes
Enclosed: Yes
Contiguous: Yes
Permitted: Yes
Wet space: No
Addition: No
Conversion: No

2 Floor 1 - Hall



Max Dimensions: 9'4" x 2'11"
Calculated Area: 84 sq. ft
Included: Yes

Heated: Yes
Finished: Yes
Enclosed: Yes
Contiguous: Yes
Permitted: Yes
Wet space: No
Addition: No
Conversion: No

21211 Virginia Pine Terrace, Brink, Germantown, Montgomery County, Maryland, United States, 20876

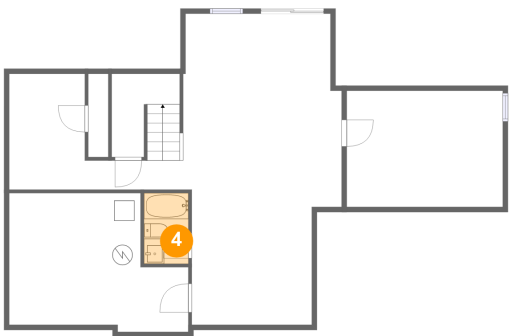
3 Floor 1 - Recreation Room



Max Dimensions: 15'8" x 30'9"
Calculated Area: 426 sq. ft
Included: Yes

Heated: Yes
Finished: Yes
Enclosed: Yes
Contiguous: Yes
Permitted: Yes
Wet space: No
Addition: No
Conversion: No

4 Floor 1 - Bath



Max Dimensions: 4'5" x 7'0"
Calculated Area: 31 sq. ft
Included: Yes

Heated: Yes
Finished: Yes
Enclosed: Yes
Contiguous: Yes
Permitted: Yes
Wet space: Yes
Addition: No
Conversion: No

5 Floor 1 - Gym

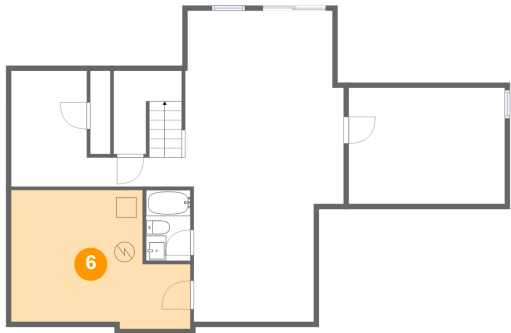


Max Dimensions: 7'6" x 11'5"
Calculated Area: 86 sq. ft
Included: Yes

Heated: Yes
Finished: Yes
Enclosed: Yes
Contiguous: Yes
Permitted: Yes
Wet space: No
Addition: No
Conversion: No

21211 Virginia Pine Terrace, Brink, Germantown, Montgomery County, Maryland, United States, 20876

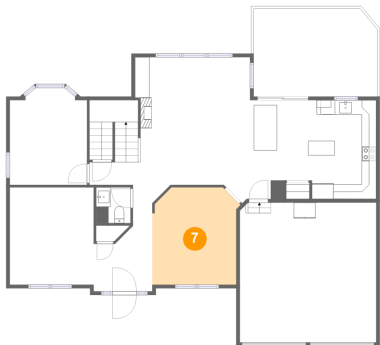
6 Floor 1 - Utility



Max Dimensions: 17'9" x 13'9"
Calculated Area: 201 sq. ft
Included: No

Heated: Yes
Finished: No
Enclosed: Yes
Contiguous: Yes
Permitted: Yes
Wet space: No
Addition: No
Conversion: No

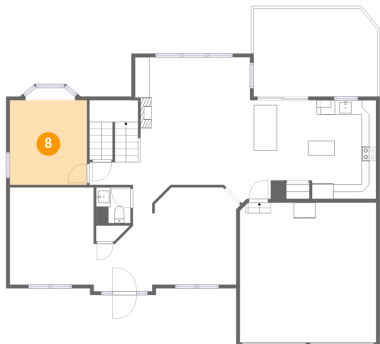
7 Floor 2 - Dining Area



Max Dimensions: 11'10" x 13'5"
Calculated Area: 151 sq. ft
Included: Yes

Heated: Yes
Finished: Yes
Enclosed: Yes
Contiguous: Yes
Permitted: Yes
Wet space: No
Addition: No
Conversion: No

8 Floor 2 - Office

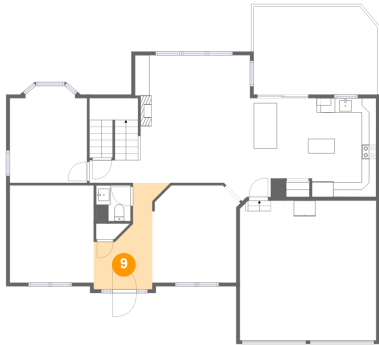


Max Dimensions: 10'8" x 11'8"
Calculated Area: 125 sq. ft
Included: Yes

Heated: Yes
Finished: Yes
Enclosed: Yes
Contiguous: Yes
Permitted: Yes
Wet space: No
Addition: No
Conversion: No

21211 Virginia Pine Terrace, Brink, Germantown, Montgomery County, Maryland, United States, 20876

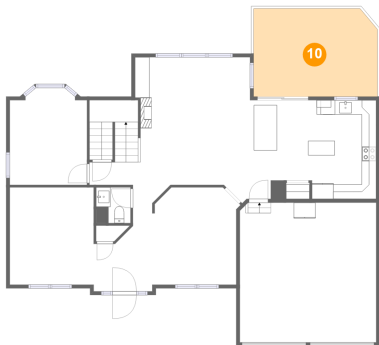
9 Floor 2 - Foyer



Max Dimensions: 8'1" x 14'8"
Calculated Area: 81 sq. ft
Included: Yes

Heated: Yes
Finished: Yes
Enclosed: Yes
Contiguous: Yes
Permitted: Yes
Wet space: No
Addition: No
Conversion: No

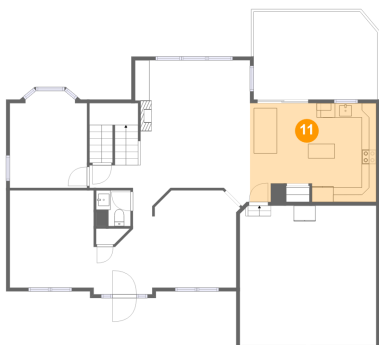
10 Floor 2 - Balcony



Max Dimensions: 17'1" x 12'1"
Calculated Area: 205 sq. ft
Included: No

Heated: No
Finished: Yes
Enclosed: No
Contiguous: Yes
Permitted: Yes
Wet space: No
Addition: No
Conversion: No

11 Floor 2 - Kitchen

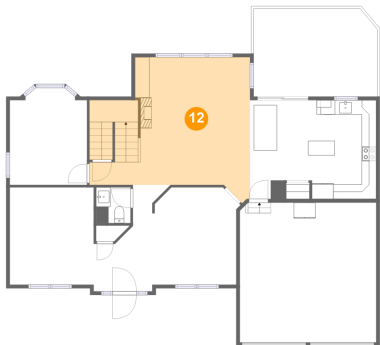


Max Dimensions: 17'5" x 13'7"
Calculated Area: 224 sq. ft
Included: Yes

Heated: Yes
Finished: Yes
Enclosed: Yes
Contiguous: Yes
Permitted: Yes
Wet space: No
Addition: No
Conversion: No

21211 Virginia Pine Terrace, Brink, Germantown, Montgomery County, Maryland, United States, 20876

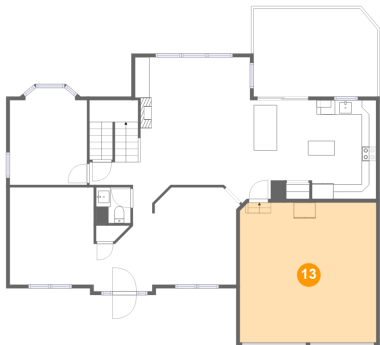
12 Floor 2 - Family Room



Max Dimensions: 22'3" x 20'1"
Calculated Area: 357 sq. ft
Included: Yes

Heated: Yes
Finished: Yes
Enclosed: Yes
Contiguous: Yes
Permitted: Yes
Wet space: No
Addition: No
Conversion: No

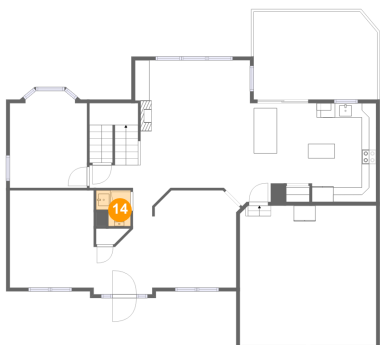
13 Floor 2 - Garage



Max Dimensions: 18'10" x 19'4"
Calculated Area: 364 sq. ft
Included: No

Heated: No
Finished: No
Enclosed: Yes
Contiguous: Yes
Permitted: Yes
Wet space: No
Addition: No
Conversion: No

14 Floor 2 - WC

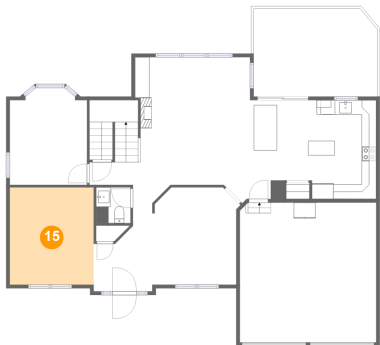


Max Dimensions: 4'9" x 4'11"
Calculated Area: 20 sq. ft
Included: Yes

Heated: Yes
Finished: Yes
Enclosed: Yes
Contiguous: Yes
Permitted: Yes
Wet space: Yes
Addition: No
Conversion: No

21211 Virginia Pine Terrace, Brink, Germantown, Montgomery County, Maryland, United States, 20876

15 Floor 2 - Living Room



Max Dimensions: 11'7" x 13'5"
Calculated Area: 156 sq. ft
Included: Yes

Heated: Yes
Finished: Yes
Enclosed: Yes
Contiguous: Yes
Permitted: Yes
Wet space: No
Addition: No
Conversion: No

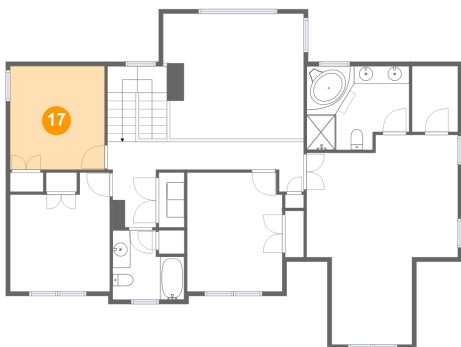
16 Floor 3 - W.I.C.



Max Dimensions: 5'2" x 7'5"
Calculated Area: 39 sq. ft
Included: Yes

Heated: Yes
Finished: Yes
Enclosed: Yes
Contiguous: Yes
Permitted: Yes
Wet space: No
Addition: No
Conversion: No

17 Floor 3 - Bedroom



Max Dimensions: 10'8" x 11'8"
Calculated Area: 125 sq. ft
Included: Yes

Heated: Yes
Finished: Yes
Enclosed: Yes
Contiguous: Yes
Permitted: Yes
Wet space: No
Addition: No
Conversion: No

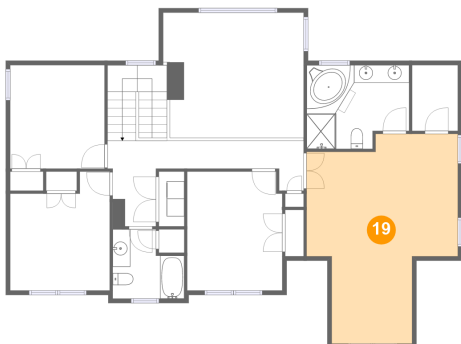
18 Floor 3 - Bedroom



Max Dimensions: 11'3" x 13'5"
Calculated Area: 132 sq. ft
Included: Yes

Heated: Yes
Finished: Yes
Enclosed: Yes
Contiguous: Yes
Permitted: Yes
Wet space: No
Addition: No
Conversion: No

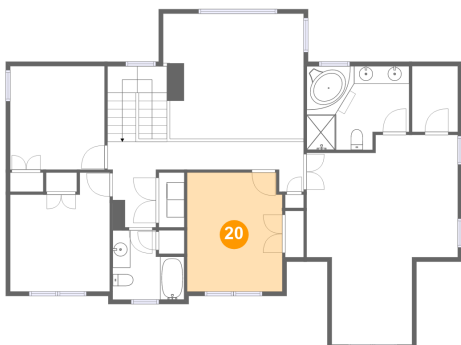
19 Floor 3 - Primary Bedroom



Max Dimensions: 17'1" x 23'9"
Calculated Area: 311 sq. ft
Included: Yes

Heated: Yes
Finished: Yes
Enclosed: Yes
Contiguous: Yes
Permitted: Yes
Wet space: No
Addition: No
Conversion: No

20 Floor 3 - Bedroom

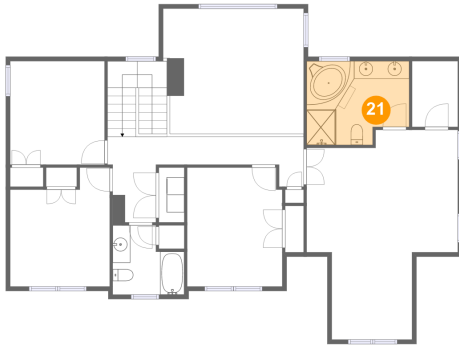


Max Dimensions: 10'9" x 13'5"
Calculated Area: 143 sq. ft
Included: Yes

Heated: Yes
Finished: Yes
Enclosed: Yes
Contiguous: Yes
Permitted: Yes
Wet space: No
Addition: No
Conversion: No

21211 Virginia Pine Terrace, Brink, Germantown, Montgomery County, Maryland, United States, 20876

21 Floor 3 - Primary Bath



Max Dimensions: 11'7" x 9'5"
Calculated Area: 102 sq. ft
Included: Yes

Heated: Yes
Finished: Yes
Enclosed: Yes
Contiguous: Yes
Permitted: Yes
Wet space: Yes
Addition: No
Conversion: No

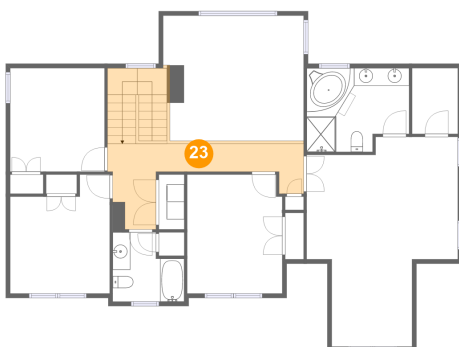
22 Floor 3 - Bath



Max Dimensions: 8'1" x 7'10"
Calculated Area: 57 sq. ft
Included: Yes

Heated: Yes
Finished: Yes
Enclosed: Yes
Contiguous: Yes
Permitted: Yes
Wet space: Yes
Addition: No
Conversion: No

23 Floor 3 - Hall



Max Dimensions: 22'3" x 9'8"
Calculated Area: 170 sq. ft
Included: Yes

Heated: Yes
Finished: Yes
Enclosed: Yes
Contiguous: Yes
Permitted: Yes
Wet space: No
Addition: No
Conversion: No

21211 Virginia Pine Terrace, Brink, Germantown, Montgomery County, Maryland, United States, 20876

24 Floor 3 - Open To Below



Max Dimensions: 15'11" x 14'2"
Calculated Area: 219 sq. ft
Included: No

Heated: No
Finished: No
Enclosed: No
Contiguous: Yes
Permitted: No
Wet space: No
Addition: No
Conversion: No