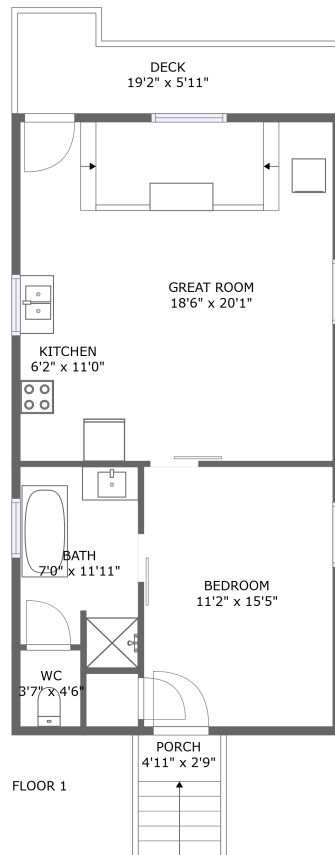




6941 Dyer Store Road, Martinsville, Henry County, Virginia, United States, 24112




Property Summary

 **1** floors

 **1** bedrooms

 **1** bathrooms

 **838** total sqft

 **0** garages

 **718** Gross Living Area sqft

6941 Dyer Store Road, Martinsville, Henry County, Virginia, United States, 24112



Room Dimensions

Floor 1

Total sqft: 838

Living area: 718

#	Room name	Dimensions	Area (sqft)	Counted as Living Area
1	Bath	7'0" x 11'11"	77 sq. ft	Yes
2	Porch	4'11" x 2'9"	35 sq. ft	No
3	Wc	3'7" x 4'6"	16 sq. ft	Yes
4	Bedroom	11'2" x 15'5"	172 sq. ft	Yes
5	Great Room	18'6" x 20'1"	304 sq. ft	Yes
6	Deck	19'2" x 5'11"	85 sq. ft	No
7	Kitchen	6'2" x 11'0"	68 sq. ft	Yes

6941 Dyer Store Road, Martinsville, Henry County, Virginia, United States, 24112

1 Floor 1 - Bath



Dimensions: 7'0" x 11'11"
Area: 77 sq. ft
Counted as Living Area:
Yes

Heated: Yes
Finished: Yes
Enclosed: Yes
Contiguous:
Yes
Permitted: Yes
Wet Space: Yes
Addition: No
Conversion: No

2 Floor 1 - Porch



Dimensions: 4'11" x 2'9"
Area: 35 sq. ft
Counted as Living Area: No

Heated: No
Finished: Yes
Enclosed: No
Contiguous: Yes
Permitted: Yes
Wet Space: No
Addition: No
Conversion: No

6941 Dyer Store Road, Martinsville, Henry County, Virginia, United States, 24112

3 Floor 1 - Wc



Dimensions: 3'7" x 4'6"
Area: 16 sq. ft
Counted as Living Area:
Yes

Heated: Yes
Finished: Yes
Enclosed: Yes
Contiguous:
Yes
Permitted: Yes
Wet Space: Yes
Addition: No
Conversion: No

4 Floor 1 - Bedroom



Dimensions: 11'2" x 15'5"
Area: 172 sq. ft
Counted as Living Area:
Yes

Heated: Yes
Finished: Yes
Enclosed: Yes
Contiguous:
Yes
Permitted: Yes
Wet Space: No
Addition: No
Conversion: No

5 Floor 1 - Great Room



Dimensions: 18'6" x 20'1"
Area: 304 sq. ft
Counted as Living Area:
Yes

Heated: Yes
Finished: Yes
Enclosed: Yes
Contiguous:
Yes
Permitted: Yes
Wet Space: No
Addition: No
Conversion: No

6941 Dyer Store Road, Martinsville, Henry County, Virginia, United States, 24112

6 Floor 1 - Deck



Dimensions: 19'2" x 5'11"
Area: 85 sq. ft
Counted as Living Area: No

Heated: No
Finished: Yes
Enclosed: No
Contiguous: Yes
Permitted: Yes
Wet Space: No
Addition: No
Conversion: No

7 Floor 1 - Kitchen



Dimensions: 6'2" x 11'0"
Area: 68 sq. ft
Counted as Living Area:
Yes

Heated: Yes
Finished: Yes
Enclosed: Yes
Contiguous:
Yes
Permitted: Yes
Wet Space: No
Addition: No
Conversion: No