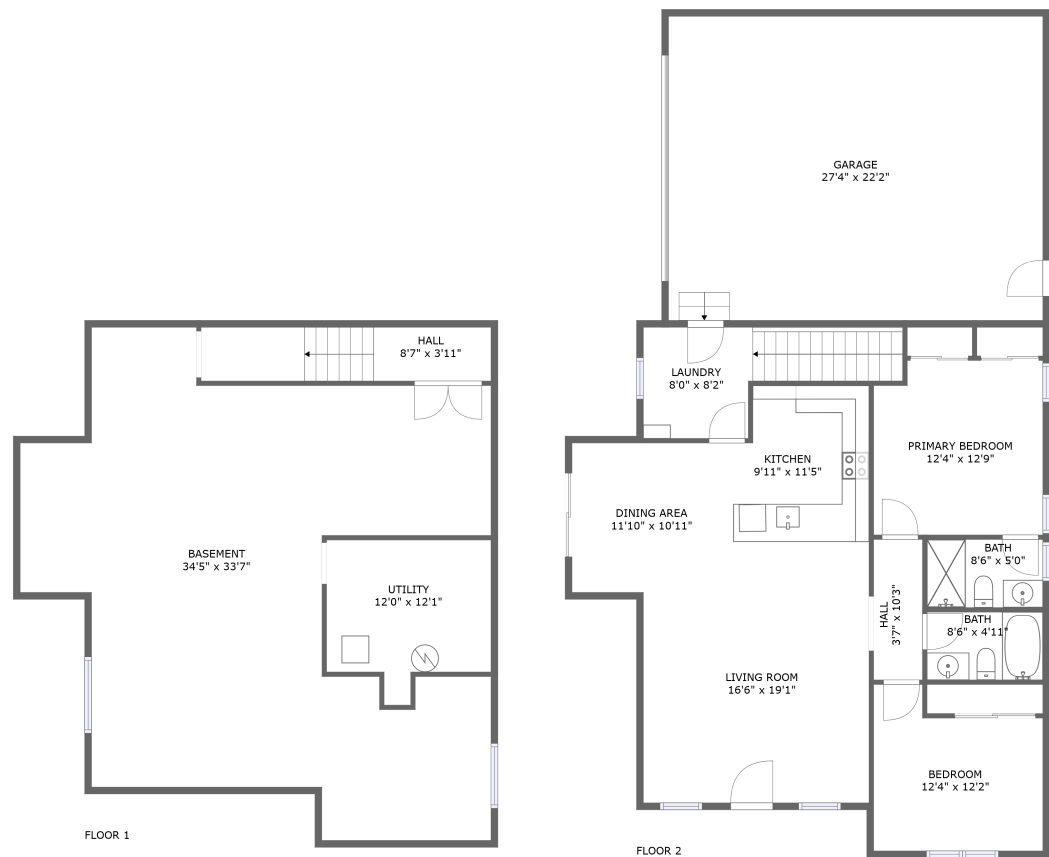




Home report


792 Patches Rd,Carpenter,WY,US




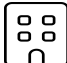
Property summary


 **1** Garages


 **2** Bedrooms

 **2** Bathrooms

 **0** Half baths

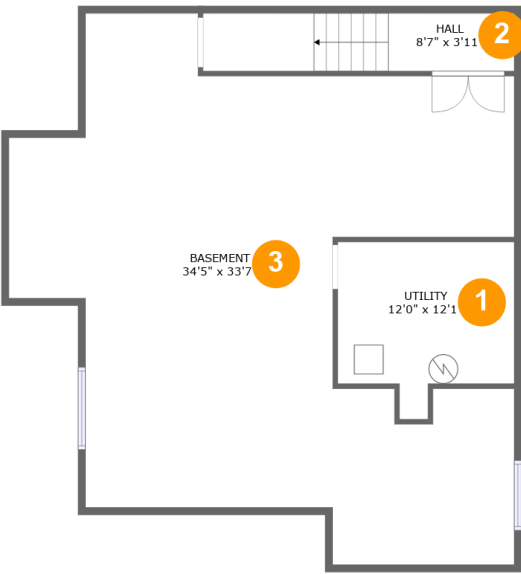
 **2** Floors

 **1,189** Gross living area sqft

 **2,994** Total sqft

Home report

792 Patches Rd,Carpenter,WY,US



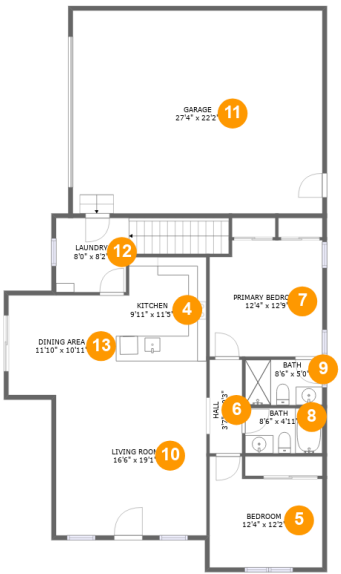
Room dimensions

Floor 1 Total sqft: 1160 Living area: 0

#		Dimensions	sqft	Counted as living area
1	Utility	12'0" x 12'1"	121 sq. ft	No
2	Hall	8'7" x 3'11"	83 sq. ft	No
3	Basement	34'5" x 33'7"	861 sq. ft	No

Home report

792 Patches Rd,Carpenter,WY,US

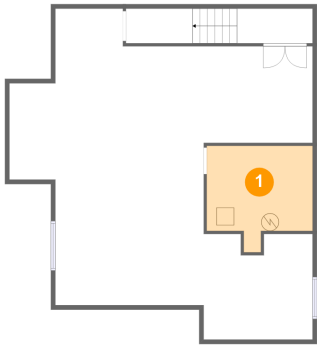


Room dimensions

Floor 2 Total sqft: 1834 Living area: 1189

#		Dimensions	sqft	Counted as living area
4	Kitchen	9'11" x 11'5"	107 sq. ft	Yes
5	Bedroom	12'4" x 12'2"	129 sq. ft	Yes
6	Hall	3'7" x 10'3"	37 sq. ft	Yes
7	Primary Bedroom	12'4" x 12'9"	153 sq. ft	Yes
8	Bath	8'6" x 4'11"	42 sq. ft	Yes
9	Bath	8'6" x 5'0"	42 sq. ft	Yes
10	Living Room	16'6" x 19'1"	291 sq. ft	Yes
11	Garage	27'4" x 22'2"	608 sq. ft	No
12	Laundry	8'0" x 8'2"	107 sq. ft	Yes
13	Dining Area	11'10" x 10'11"	129 sq. ft	Yes

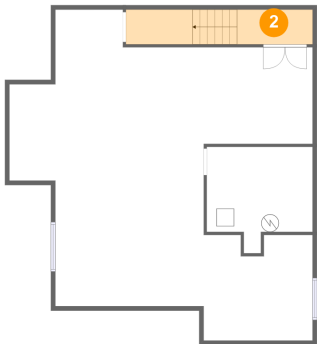
1 Floor 1 - Utility



Dimensions: 12'0" x 12'1"
Area: 121 sq. ft
Counted as living area: No

Heated: Yes
Finished: No
Enclosed: Yes
Contiguous: Yes
Permitted: Yes
Wet space: No
Addition: No
Conversion: No

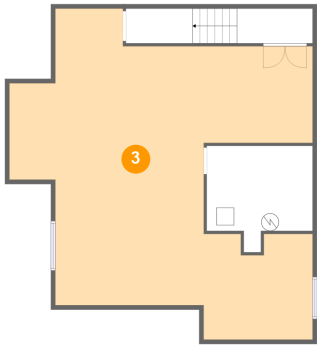
2 Floor 1 - Hall



Dimensions: 8'7" x 3'11"
Area: 83 sq. ft
Counted as living area: No

Heated: Yes
Finished: Yes
Enclosed: Yes
Contiguous: No
Permitted: Yes
Wet space: No
Addition: No
Conversion: No

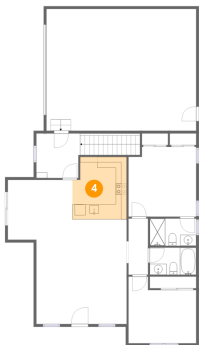
3 Floor 1 - Basement



Dimensions: 34'5" x 33'7"
Area: 861 sq. ft
Counted as living area: No

Heated: Yes
Finished: No
Enclosed: Yes
Contiguous: Yes
Permitted: Yes
Wet space: No
Addition: No
Conversion: No

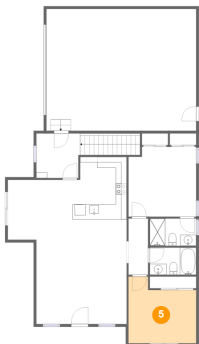
4 Floor 2 - Kitchen



Dimensions: 9'11" x 11'5"
Area: 107 sq. ft
Counted as living area: Yes

Heated: Yes
Finished: Yes
Enclosed: Yes
Contiguous: Yes
Permitted: Yes
Wet space: No
Addition: No
Conversion: No

5 Floor 2 - Bedroom



Dimensions: 12'4" x 12'2"
Area: 129 sq. ft
Counted as living area: Yes

Heated: Yes
Finished: Yes
Enclosed: Yes
Contiguous: Yes
Permitted: Yes
Wet space: No
Addition: No
Conversion: No

6 Floor 2 - Hall



Dimensions: 3'7" x 10'3"
Area: 37 sq. ft
Counted as living area: Yes

Heated: Yes
Finished: Yes
Enclosed: Yes
Contiguous: Yes
Permitted: Yes
Wet space: No
Addition: No
Conversion: No

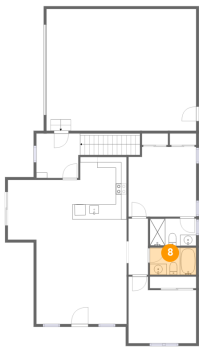
7 Floor 2 - Primary Bedroom



Dimensions: 12'4" x 12'9"
Area: 153 sq. ft
Counted as living area: Yes

Heated: Yes
Finished: Yes
Enclosed: Yes
Contiguous: Yes
Permitted: Yes
Wet space: No
Addition: No
Conversion: No

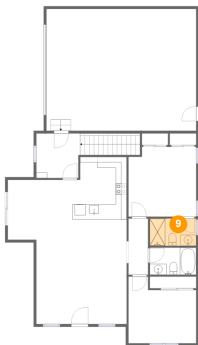
8 Floor 2 - Bath



Dimensions: 8'6" x 4'11"
Area: 42 sq. ft
Counted as living area: Yes

Heated: Yes
Finished: Yes
Enclosed: Yes
Contiguous: Yes
Permitted: Yes
Wet space: Yes
Addition: No
Conversion: No

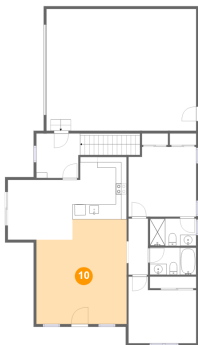
9 Floor 2 - Bath



Dimensions: 8'6" x 5'0"
Area: 42 sq. ft
Counted as living area: Yes

Heated: Yes
Finished: Yes
Enclosed: Yes
Contiguous: Yes
Permitted: Yes
Wet space: Yes
Addition: No
Conversion: No

10 Floor 2 - Living Room



Dimensions: 16'6" x 19'1"
Area: 291 sq. ft
Counted as living area: Yes

Heated: Yes
Finished: Yes
Enclosed: Yes
Contiguous: Yes
Permitted: Yes
Wet space: No
Addition: No
Conversion: No

11 Floor 2 - Garage



Dimensions: 27'4" x 22'2"
Area: 608 sq. ft
Counted as living area: No

Heated: No
Finished: No
Enclosed: Yes
Contiguous: Yes
Permitted: Yes
Wet space: No
Addition: No
Conversion: No

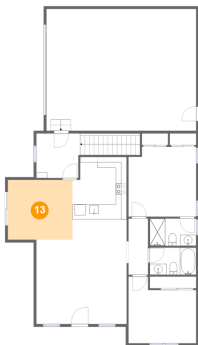
12 Floor 2 - Laundry



Dimensions: 8'0" x 8'2"
Area: 107 sq. ft
Counted as living area: Yes

Heated: Yes
Finished: Yes
Enclosed: Yes
Contiguous: Yes
Permitted: Yes
Wet space: No
Addition: No
Conversion: No

13 Floor 2 - Dining Area



Dimensions: 11'10" x 10'11"
Area: 129 sq. ft
Counted as living area: Yes

Heated: Yes
Finished: Yes
Enclosed: Yes
Contiguous: Yes
Permitted: Yes
Wet space: No
Addition: No
Conversion: No