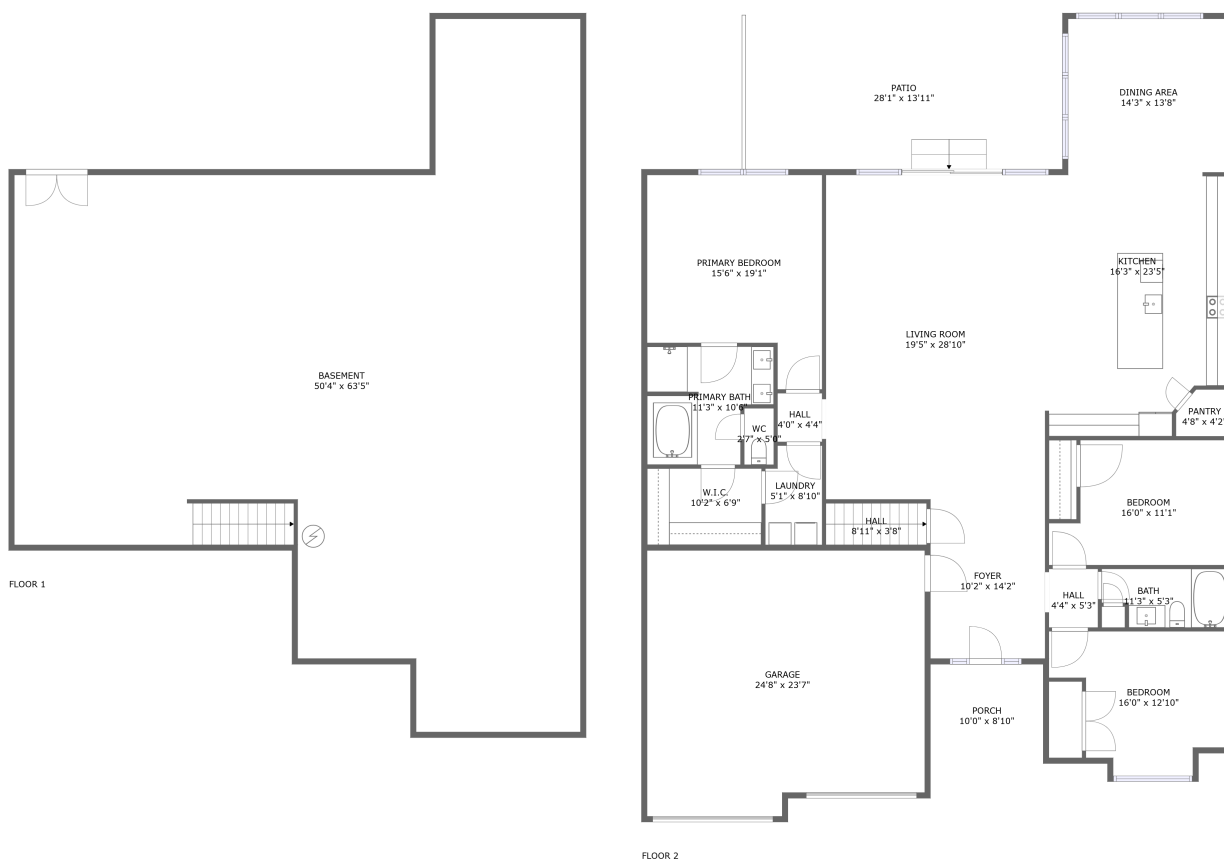


Home report

111 Moonstone Drive, Kearneysville, Jefferson County, West Virginia, United States, 25430



Total Area: 2314 sq. ft

Below Ground: 0 sq. ft, Floor 2: 2314 sq. ft

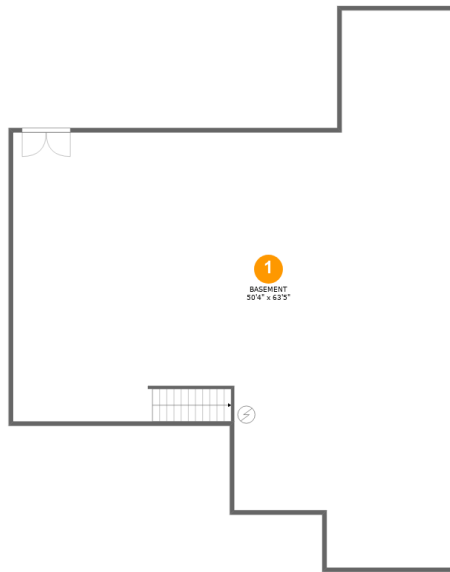
Excluded: Basement 2181 sq. ft, Garage 556 sq. ft, Porch 88 sq. ft, Patio 392 sq. ft, Walls: 267 sq. ft

Property summary



Home report

111 Moonstone Drive, Kearneysville, Jefferson County, West Virginia, United States, 25430



Room dimensions

Floor 1 Below ground

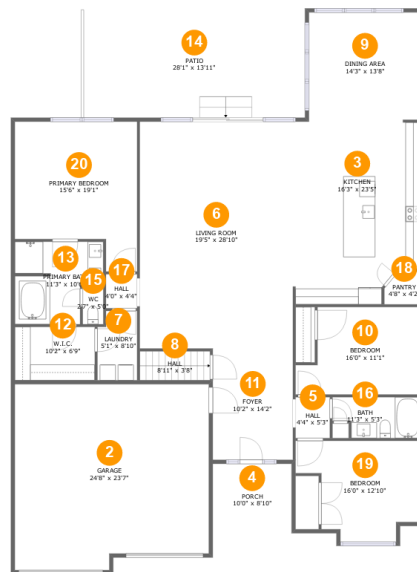
Total:0sqft

Excluded: 2181sqft

#		Max Dimensions	sqft	Included
1	Basement	50'4" x 63'5"	2177 sq. ft	No

Home report

111 Moonstone Drive, Kearneysville, Jefferson County, West Virginia, United States, 25430



Room dimensions

Floor 2

Total:2314sqft

Excluded: 1036sqft

#		Max Dimensions	sqft	Included
2	Garage	24'8" x 23'7"	556 sq. ft	No
3	Kitchen	16'3" x 23'5"	360 sq. ft	Yes
4	Porch	10'0" x 8'10"	88 sq. ft	No
5	Hall	4'4" x 5'3"	23 sq. ft	Yes
6	Living Room	19'5" x 28'10"	562 sq. ft	Yes
7	Laundry	5'1" x 8'10"	42 sq. ft	Yes
8	Hall	8'11" x 3'8"	33 sq. ft	Yes
9	Dining Area	14'3" x 13'8"	195 sq. ft	Yes
10	Bedroom	16'0" x 11'1"	157 sq. ft	Yes
11	Foyer	10'2" x 14'2"	144 sq. ft	Yes
12	W.I.C.	10'2" x 6'9"	69 sq. ft	Yes

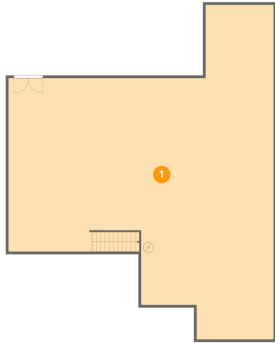
Home report

111 Moonstone Drive, Kearneysville, Jefferson County, West Virginia, United States, 25430

#		Max Dimensions	sqft	Included
13	Primary Bath	11'3" x 10'6"	101 sq. ft	Yes
14	Patio	28'1" x 13'11"	392 sq. ft	No
15	WC	2'7" x 5'0"	13 sq. ft	Yes
16	Bath	11'3" x 5'3"	54 sq. ft	Yes
17	Hall	4'0" x 4'4"	17 sq. ft	Yes
18	Pantry	4'8" x 4'2"	18 sq. ft	Yes
19	Bedroom	16'0" x 12'10"	165 sq. ft	Yes
20	Primary Bedroom	15'6" x 19'1"	249 sq. ft	Yes

111 Moonstone Drive, Kearneysville, Jefferson County, West Virginia, United States, 25430

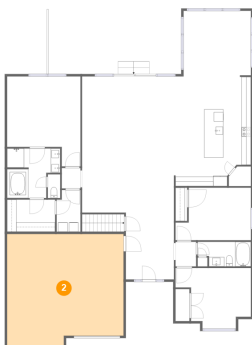
1 Floor 1 - Basement



Max Dimensions: 50'4" x 63'5"
Calculated Area: 2177 sq. ft
Included: No

Heated: Yes
Finished: No
Enclosed: Yes
Contiguous: Yes
Permitted: Yes
Wet space: No
Addition: No
Conversion: No

2 Floor 2 - Garage



Max Dimensions: 24'8" x 23'7"
Calculated Area: 556 sq. ft
Included: No

Heated: No
Finished: No
Enclosed: Yes
Contiguous: Yes
Permitted: Yes
Wet space: No
Addition: No
Conversion: No

111 Moonstone Drive, Kearneysville, Jefferson County, West Virginia, United States, 25430

3 Floor 2 - Kitchen



Max Dimensions: 16'3" x 23'5"
Calculated Area: 360 sq. ft
Included: Yes

Heated: Yes
Finished: Yes
Enclosed: Yes
Contiguous: Yes
Permitted: Yes
Wet space: No
Addition: No
Conversion: No

4 Floor 2 - Porch



Max Dimensions: 10'0" x 8'10"
Calculated Area: 88 sq. ft
Included: No

Heated: No
Finished: Yes
Enclosed: No
Contiguous: Yes
Permitted: Yes
Wet space: No
Addition: No
Conversion: No

5 Floor 2 - Hall

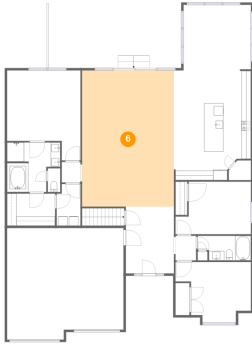


Max Dimensions: 4'4" x 5'3"
Calculated Area: 23 sq. ft
Included: Yes

Heated: Yes
Finished: Yes
Enclosed: Yes
Contiguous: Yes
Permitted: Yes
Wet space: No
Addition: No
Conversion: No

111 Moonstone Drive, Kearneysville, Jefferson County, West Virginia, United States, 25430

6 Floor 2 - Living Room



Max Dimensions: 19'5" x 28'10"
Calculated Area: 562 sq. ft
Included: Yes

Heated: Yes
Finished: Yes
Enclosed: Yes
Contiguous: Yes
Permitted: Yes
Wet space: No
Addition: No
Conversion: No

7 Floor 2 - Laundry



Max Dimensions: 5'1" x 8'10"
Calculated Area: 42 sq. ft
Included: Yes

Heated: Yes
Finished: Yes
Enclosed: Yes
Contiguous: Yes
Permitted: Yes
Wet space: No
Addition: No
Conversion: No

8 Floor 2 - Hall



Max Dimensions: 8'11" x 3'8"
Calculated Area: 33 sq. ft
Included: Yes

Heated: Yes
Finished: Yes
Enclosed: Yes
Contiguous: Yes
Permitted: Yes
Wet space: No
Addition: No
Conversion: No

111 Moonstone Drive, Kearneysville, Jefferson County, West Virginia, United States, 25430

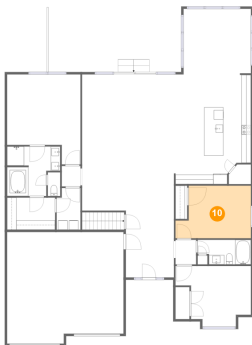
9 Floor 2 - Dining Area



Max Dimensions: 14'3" x 13'8"
Calculated Area: 195 sq. ft
Included: Yes

Heated: Yes
Finished: Yes
Enclosed: Yes
Contiguous: Yes
Permitted: Yes
Wet space: No
Addition: No
Conversion: No

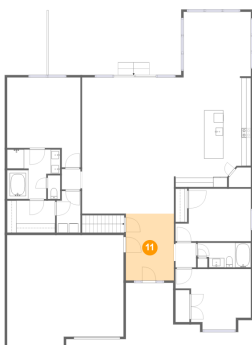
10 Floor 2 - Bedroom



Max Dimensions: 16'0" x 11'1"
Calculated Area: 157 sq. ft
Included: Yes

Heated: Yes
Finished: Yes
Enclosed: Yes
Contiguous: Yes
Permitted: Yes
Wet space: No
Addition: No
Conversion: No

11 Floor 2 - Foyer



Max Dimensions: 10'2" x 14'2"
Calculated Area: 144 sq. ft
Included: Yes

Heated: Yes
Finished: Yes
Enclosed: Yes
Contiguous: Yes
Permitted: Yes
Wet space: No
Addition: No
Conversion: No

111 Moonstone Drive, Kearneysville, Jefferson County, West Virginia, United States, 25430

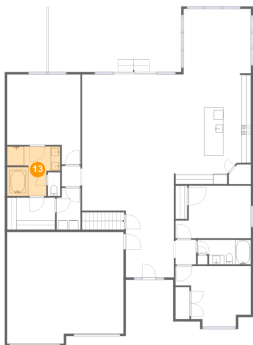
12 Floor 2 - W.I.C.



Max Dimensions: 10'2" x 6'9"
Calculated Area: 69 sq. ft
Included: Yes

Heated: Yes
Finished: Yes
Enclosed: Yes
Contiguous: Yes
Permitted: Yes
Wet space: No
Addition: No
Conversion: No

13 Floor 2 - Primary Bath



Max Dimensions: 11'3" x 10'6"
Calculated Area: 101 sq. ft
Included: Yes

Heated: Yes
Finished: Yes
Enclosed: Yes
Contiguous: Yes
Permitted: Yes
Wet space: Yes
Addition: No
Conversion: No

14 Floor 2 - Patio



Max Dimensions: 28'1" x 13'11"
Calculated Area: 392 sq. ft
Included: No

Heated: No
Finished: Yes
Enclosed: No
Contiguous: Yes
Permitted: Yes
Wet space: No
Addition: No
Conversion: No

111 Moonstone Drive, Kearneysville, Jefferson County, West Virginia, United States, 25430

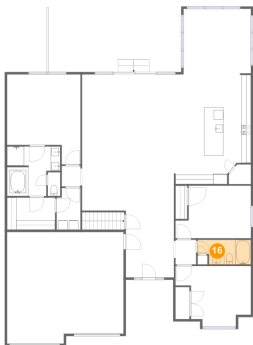
15 Floor 2 - WC



Max Dimensions: 2'7" x 5'0"
Calculated Area: 13 sq. ft
Included: Yes

Heated: Yes
Finished: Yes
Enclosed: Yes
Contiguous: Yes
Permitted: Yes
Wet space: Yes
Addition: No
Conversion: No

16 Floor 2 - Bath



Max Dimensions: 11'3" x 5'3"
Calculated Area: 54 sq. ft
Included: Yes

Heated: Yes
Finished: Yes
Enclosed: Yes
Contiguous: Yes
Permitted: Yes
Wet space: Yes
Addition: No
Conversion: No

17 Floor 2 - Hall



Max Dimensions: 4'0" x 4'4"
Calculated Area: 17 sq. ft
Included: Yes

Heated: Yes
Finished: Yes
Enclosed: Yes
Contiguous: Yes
Permitted: Yes
Wet space: No
Addition: No
Conversion: No

111 Moonstone Drive, Kearneysville, Jefferson County, West Virginia, United States, 25430

18 Floor 2 - Pantry



Max Dimensions: 4'8" x 4'2"
Calculated Area: 18 sq. ft
Included: Yes

Heated: Yes
Finished: Yes
Enclosed: Yes
Contiguous: Yes
Permitted: Yes
Wet space: No
Addition: No
Conversion: No

19 Floor 2 - Bedroom



Max Dimensions: 16'0" x 12'10"
Calculated Area: 165 sq. ft
Included: Yes

Heated: Yes
Finished: Yes
Enclosed: Yes
Contiguous: Yes
Permitted: Yes
Wet space: No
Addition: No
Conversion: No

20 Floor 2 - Primary Bedroom



Max Dimensions: 15'6" x 19'1"
Calculated Area: 249 sq. ft
Included: Yes

Heated: Yes
Finished: Yes
Enclosed: Yes
Contiguous: Yes
Permitted: Yes
Wet space: No
Addition: No
Conversion: No