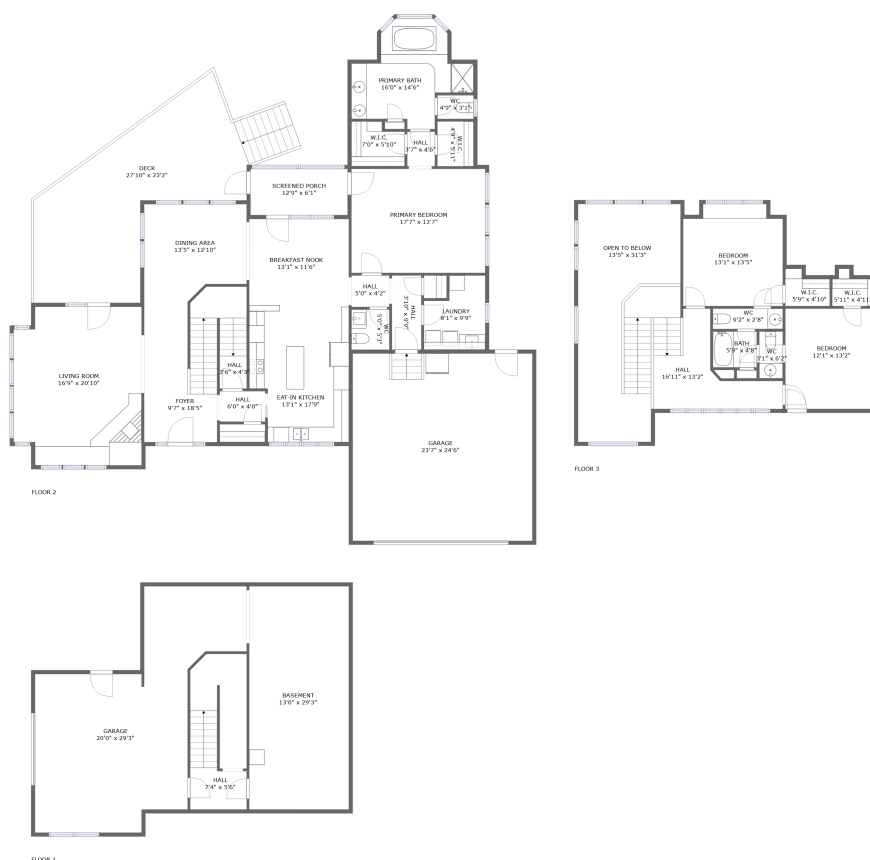


1104 Summerwood Cir SE, Huntsville, AL, US



Property summary


 **2** Garages

 **3** Bedrooms

 **2** Bathrooms

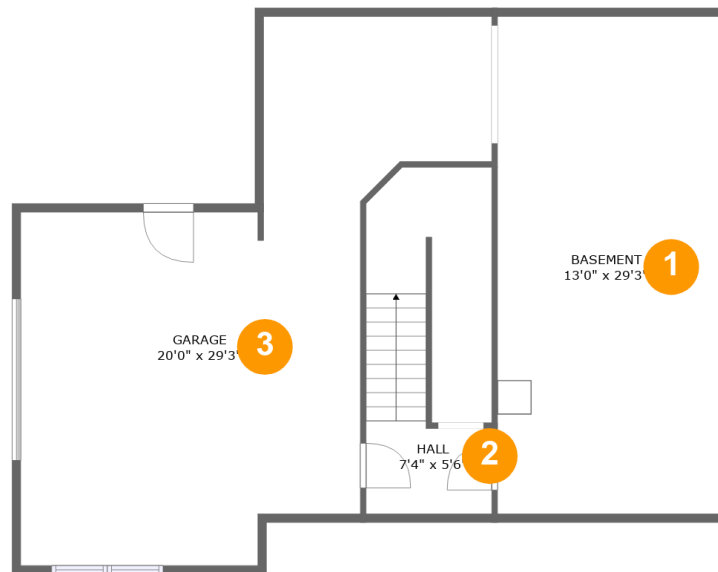
 **1** Half baths

 **3** Floors

 **2,657** Gross living area sqft

 **5,342** Total sqft

1104 Summerwood Cir SE, Huntsville, AL, US



Room dimensions

Floor 1

Total sqft: 1158

Living area: 0

#		Dimensions	sqft	Counted as living area
1	Basement	13'0" x 29'3"	382 sq. ft	No
2	Hall	7'4" x 5'6"	144 sq. ft	No
3	Garage	20'0" x 29'3"	532 sq. ft	No

1104 Summerwood Cir SE, Huntsville, AL, US**Room dimensions**

Floor 2

Total sqft: 3140

Living area: 1930

#		Dimensions	sqft	Counted as living area
4	Cl	7'0" x 5'10"	37 sq. ft	Yes
5	Outdoor	27'10" x 23'2"	479 sq. ft	No
6	Hall	3'10" x 9'9"	38 sq. ft	Yes
7	Cl	4'9" x 5'11"	28 sq. ft	Yes
8	Dining Room	13'5" x 12'10"	157 sq. ft	Yes
9	Living Room	16'9" x 20'10"	332 sq. ft	Yes
10	Hall	3'7" x 4'6"	16 sq. ft	Yes
11	Hall	3'6" x 4'3"	33 sq. ft	No
12	Garage	23'7" x 24'6"	579 sq. ft	No
13	Bedroom	17'7" x 13'7"	239 sq. ft	Yes
14	Entry	9'7" x 18'5"	194 sq. ft	Yes

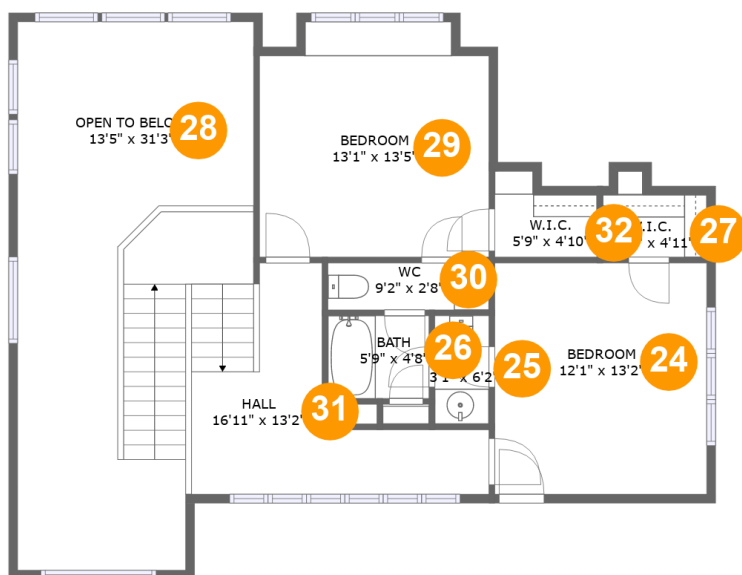
Scan captured on Tue, 03 Dec 2024 18:33:21 GMT

Information is calculated by Cubicasa technology deemed highly reliable but not guaranteed.

1104 Summerwood Cir SE,Huntsville,AL,US

#		Dimensions	sqft	Counted as living area
15	Hall	5'0" x 4'2"	21 sq. ft	Yes
16	Bath	4'9" x 3'1"	15 sq. ft	Yes
17	Kitchen	13'1" x 17'9"	215 sq. ft	Yes
18	Hall	6'0" x 4'0"	24 sq. ft	Yes
19	Utility	8'1" x 9'9"	67 sq. ft	Yes
20	Bath	5'0" x 5'3"	26 sq. ft	Yes
21	Bath	16'0" x 14'6"	152 sq. ft	Yes
22	Nook	13'1" x 11'6"	151 sq. ft	Yes
23	Outdoor	12'9" x 6'1"	77 sq. ft	No

1104 Summerwood Cir SE, Huntsville, AL, US



Room dimensions

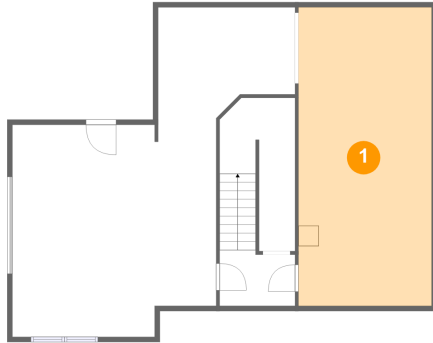
Floor 3

Total sqft: 1044 Living area: 727

#		Dimensions	sqft	Counted as living area
24	Bedroom	12'1" x 13'2"	159 sq. ft	Yes
25	Bath	3'1" x 6'2"	19 sq. ft	Yes
26	Bath	5'9" x 4'8"	27 sq. ft	Yes
27	Cl	5'11" x 4'11"	23 sq. ft	Yes
28	Open To Below	13'5" x 31'3"	286 sq. ft	No
29	Bedroom	13'1" x 13'5"	166 sq. ft	Yes
30	Bath	9'2" x 2'8"	24 sq. ft	Yes
31	Hall	16'11" x 13'2"	203 sq. ft	Yes
32	Cl	5'9" x 4'10"	24 sq. ft	Yes

1104 Summerwood Cir SE, Huntsville, AL, US

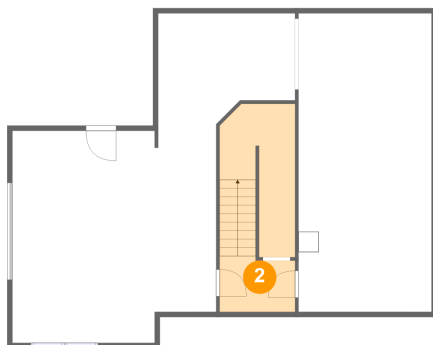
1 Floor 1 - Basement



Dimensions: 13'0" x 29'3"
Area: 382 sq. ft
Counted as living area: No

Heated: Yes
Finished: No
Enclosed: Yes
Contiguous: Yes
Permitted: Yes
Wet space: No
Addition: No
Conversion: No

2 Floor 1 - Hall



Dimensions: 7'4" x 5'6"
Area: 144 sq. ft
Counted as living area: No

Heated: Yes
Finished: No
Enclosed: Yes
Contiguous: Yes
Permitted: Yes
Wet space: No
Addition: No
Conversion: No

1104 Summerwood Cir SE, Huntsville, AL, US

3 Floor 1 - Garage



Dimensions: 20'0" x 29'3"
Area: 532 sq. ft
Counted as living area: No

Heated: No
Finished: No
Enclosed: Yes
Contiguous: Yes
Permitted: Yes
Wet space: No
Addition: No
Conversion: No

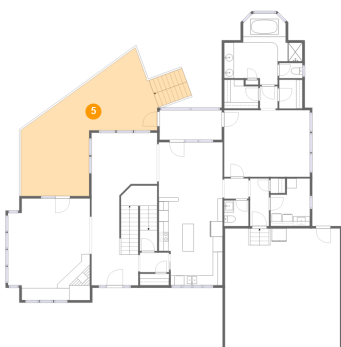
4 Floor 2 - Cl



Dimensions: 7'0" x 5'10"
Area: 37 sq. ft
Counted as living area: Yes

Heated: Yes
Finished: Yes
Enclosed: Yes
Contiguous: Yes
Permitted: Yes
Wet space: No
Addition: No
Conversion: No

5 Floor 2 - Outdoor

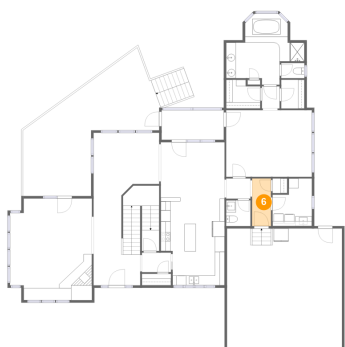


Dimensions: 27'10" x 23'2"
Area: 479 sq. ft
Counted as living area: No

Heated: No
Finished: Yes
Enclosed: No
Contiguous: Yes
Permitted: Yes
Wet space: No
Addition: No
Conversion: No

1104 Summerwood Cir SE, Huntsville, AL, US

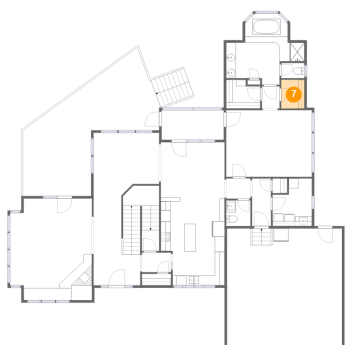
6 Floor 2 - Hall



Dimensions: 3'10" x 9'9"
Area: 38 sq. ft
Counted as living area: Yes

Heated: Yes
Finished: Yes
Enclosed: Yes
Contiguous: Yes
Permitted: Yes
Wet space: No
Addition: No
Conversion: No

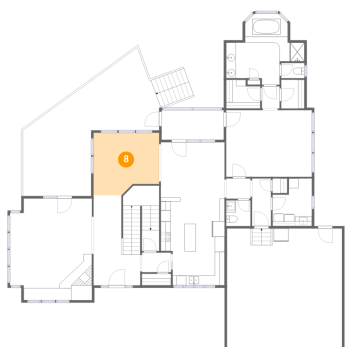
7 Floor 2 - Cl



Dimensions: 4'9" x 5'11"
Area: 28 sq. ft
Counted as living area: Yes

Heated: Yes
Finished: Yes
Enclosed: Yes
Contiguous: Yes
Permitted: Yes
Wet space: No
Addition: No
Conversion: No

8 Floor 2 - Dining Room

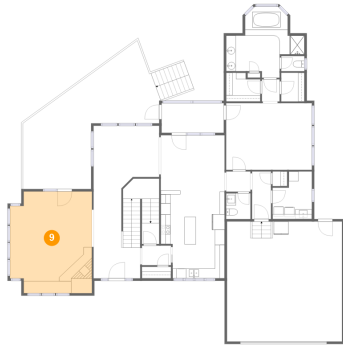


Dimensions: 13'5" x 12'10"
Area: 157 sq. ft
Counted as living area: Yes

Heated: Yes
Finished: Yes
Enclosed: Yes
Contiguous: Yes
Permitted: Yes
Wet space: No
Addition: No
Conversion: No

1104 Summerwood Cir SE, Huntsville, AL, US

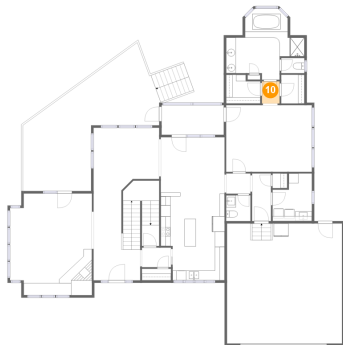
9 Floor 2 - Living Room



Dimensions: 16'9" x 20'10"
Area: 332 sq. ft
Counted as living area: Yes

Heated: Yes
Finished: Yes
Enclosed: Yes
Contiguous: Yes
Permitted: Yes
Wet space: No
Addition: No
Conversion: No

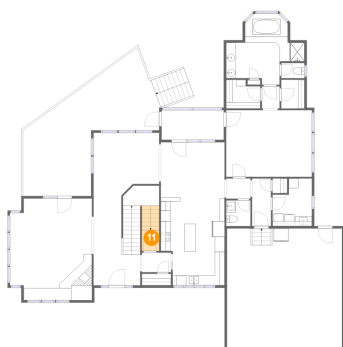
10 Floor 2 - Hall



Dimensions: 3'7" x 4'6"
Area: 16 sq. ft
Counted as living area: Yes

Heated: Yes
Finished: Yes
Enclosed: Yes
Contiguous: Yes
Permitted: Yes
Wet space: No
Addition: No
Conversion: No

11 Floor 2 - Hall

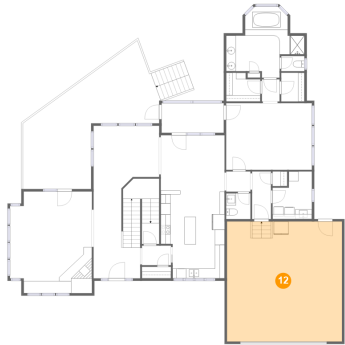


Dimensions: 3'6" x 4'3"
Area: 33 sq. ft
Counted as living area: No

Heated: Yes
Finished: Yes
Enclosed: Yes
Contiguous: Yes
Permitted: Yes
Wet space: No
Addition: No
Conversion: No

1104 Summerwood Cir SE, Huntsville, AL, US

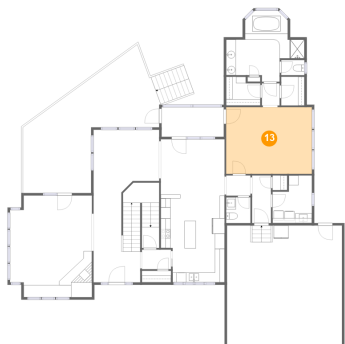
12 Floor 2 - Garage



Dimensions: 23'7" x 24'6"
Area: 579 sq. ft
Counted as living area: No

Heated: No
Finished: No
Enclosed: Yes
Contiguous: Yes
Permitted: Yes
Wet space: No
Addition: No
Conversion: No

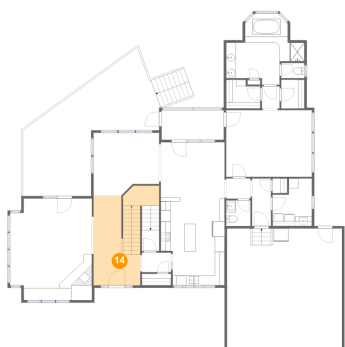
13 Floor 2 - Bedroom



Dimensions: 17'7" x 13'7"
Area: 239 sq. ft
Counted as living area: Yes

Heated: Yes
Finished: Yes
Enclosed: Yes
Contiguous: Yes
Permitted: Yes
Wet space: No
Addition: No
Conversion: No

14 Floor 2 - Entry

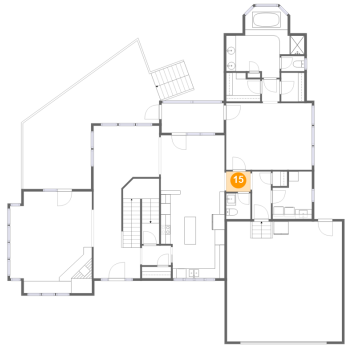


Dimensions: 9'7" x 18'5"
Area: 194 sq. ft
Counted as living area: Yes

Heated: Yes
Finished: Yes
Enclosed: Yes
Contiguous: Yes
Permitted: Yes
Wet space: No
Addition: No
Conversion: No

1104 Summerwood Cir SE, Huntsville, AL, US

15 Floor 2 - Hall



Dimensions: 5'0" x 4'2"
Area: 21 sq. ft
Counted as living area: Yes

Heated: Yes
Finished: Yes
Enclosed: Yes
Contiguous: Yes
Permitted: Yes
Wet space: No
Addition: No
Conversion: No

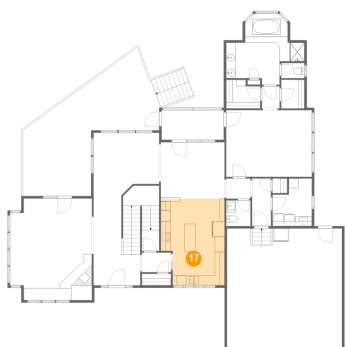
16 Floor 2 - Bath



Dimensions: 4'9" x 3'1"
Area: 15 sq. ft
Counted as living area: Yes

Heated: Yes
Finished: Yes
Enclosed: Yes
Contiguous: Yes
Permitted: Yes
Wet space: Yes
Addition: No
Conversion: No

17 Floor 2 - Kitchen

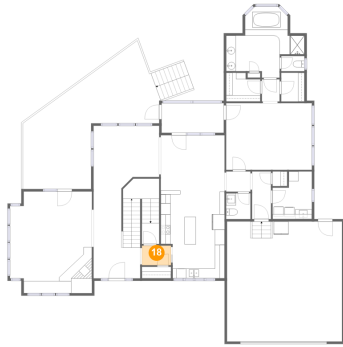


Dimensions: 13'1" x 17'9"
Area: 215 sq. ft
Counted as living area: Yes

Heated: Yes
Finished: Yes
Enclosed: Yes
Contiguous: Yes
Permitted: Yes
Wet space: No
Addition: No
Conversion: No

1104 Summerwood Cir SE, Huntsville, AL, US

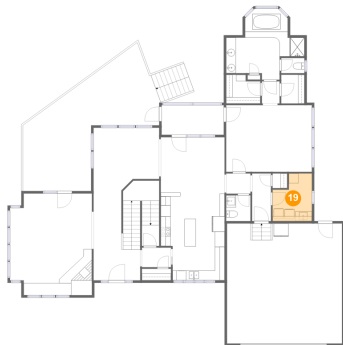
18 Floor 2 - Hall



Dimensions: 6'0" x 4'0"
Area: 24 sq. ft
Counted as living area: Yes

Heated: Yes
Finished: Yes
Enclosed: Yes
Contiguous: Yes
Permitted: Yes
Wet space: No
Addition: No
Conversion: No

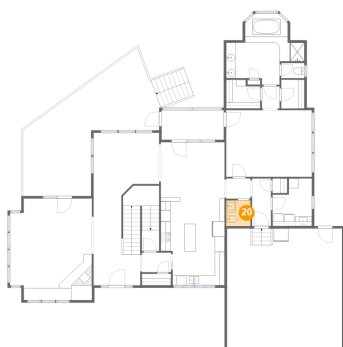
19 Floor 2 - Utility



Dimensions: 8'1" x 9'9"
Area: 67 sq. ft
Counted as living area: Yes

Heated: Yes
Finished: Yes
Enclosed: Yes
Contiguous: Yes
Permitted: Yes
Wet space: No
Addition: No
Conversion: No

20 Floor 2 - Bath

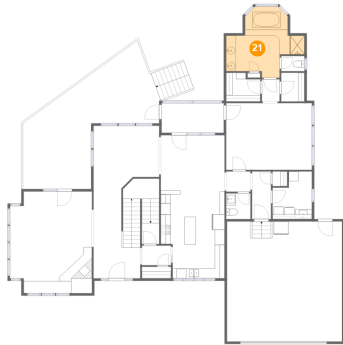


Dimensions: 5'0" x 5'3"
Area: 26 sq. ft
Counted as living area: Yes

Heated: Yes
Finished: Yes
Enclosed: Yes
Contiguous: Yes
Permitted: Yes
Wet space: Yes
Addition: No
Conversion: No

1104 Summerwood Cir SE, Huntsville, AL, US

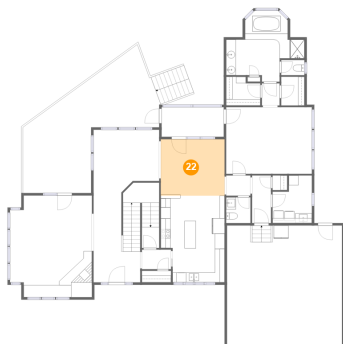
21 Floor 2 - Bath



Dimensions: 16'0" x 14'6"
Area: 152 sq. ft
Counted as living area: Yes

Heated: Yes
Finished: Yes
Enclosed: Yes
Contiguous: Yes
Permitted: Yes
Wet space: Yes
Addition: No
Conversion: No

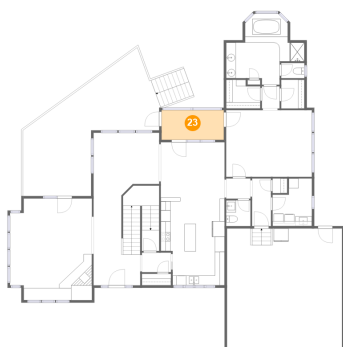
22 Floor 2 - Nook



Dimensions: 13'1" x 11'6"
Area: 151 sq. ft
Counted as living area: Yes

Heated: Yes
Finished: Yes
Enclosed: Yes
Contiguous: Yes
Permitted: Yes
Wet space: No
Addition: No
Conversion: No

23 Floor 2 - Outdoor

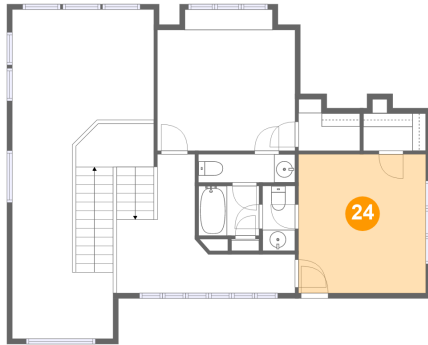


Dimensions: 12'9" x 6'1"
Area: 77 sq. ft
Counted as living area: No

Heated: No
Finished: Yes
Enclosed: No
Contiguous: Yes
Permitted: Yes
Wet space: No
Addition: No
Conversion: No

1104 Summerwood Cir SE, Huntsville, AL, US

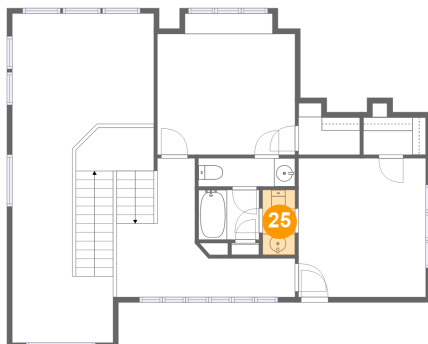
24 Floor 3 - Bedroom



Dimensions: 12'1" x 13'2"
Area: 159 sq. ft
Counted as living area: Yes

Heated: Yes
Finished: Yes
Enclosed: Yes
Contiguous: Yes
Permitted: Yes
Wet space: No
Addition: No
Conversion: No

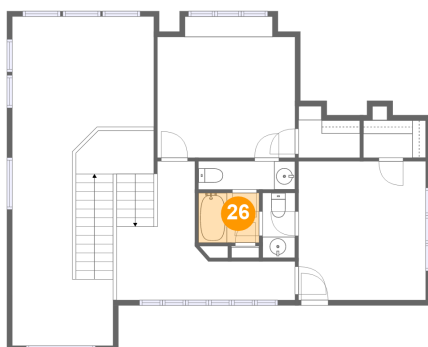
25 Floor 3 - Bath



Dimensions: 3'1" x 6'2"
Area: 19 sq. ft
Counted as living area: Yes

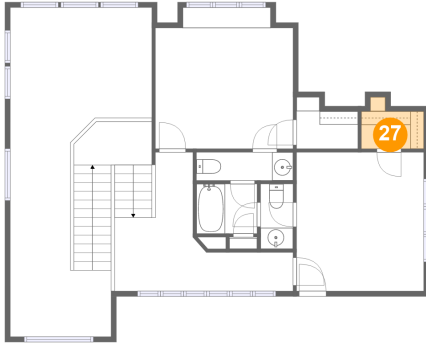
Heated: Yes
Finished: Yes
Enclosed: Yes
Contiguous: Yes
Permitted: Yes
Wet space: Yes
Addition: No
Conversion: No

26 Floor 3 - Bath



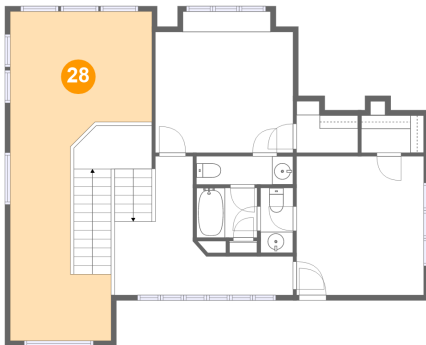
Dimensions: 5'9" x 4'8"
Area: 27 sq. ft
Counted as living area: Yes

Heated: Yes
Finished: Yes
Enclosed: Yes
Contiguous: Yes
Permitted: Yes
Wet space: Yes
Addition: No
Conversion: No

1104 Summerwood Cir SE, Huntsville, AL, US**27 Floor 3 - Cl**

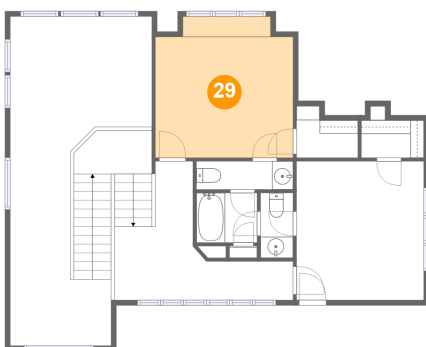
Dimensions: 5'11" x 4'11"
Area: 23 sq. ft
Counted as living area: Yes

Heated: Yes
Finished: Yes
Enclosed: Yes
Contiguous: Yes
Permitted: Yes
Wet space: No
Addition: No
Conversion: No

28 Floor 3 - Open To Below

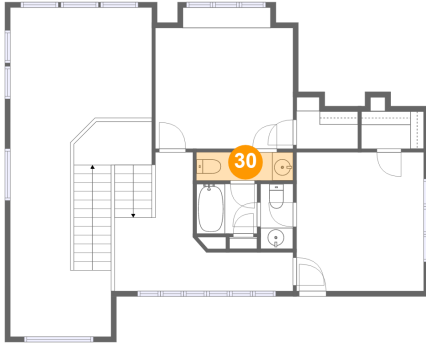
Dimensions: 13'5" x 31'3"
Area: 286 sq. ft
Counted as living area: No

Heated: No
Finished: No
Enclosed: No
Contiguous: Yes
Permitted: No
Wet space: No
Addition: No
Conversion: No

29 Floor 3 - Bedroom

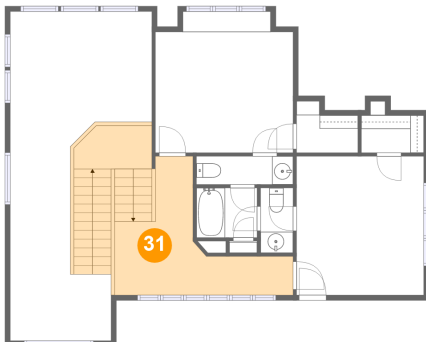
Dimensions: 13'1" x 13'5"
Area: 166 sq. ft
Counted as living area: Yes

Heated: Yes
Finished: Yes
Enclosed: Yes
Contiguous: Yes
Permitted: Yes
Wet space: No
Addition: No
Conversion: No

1104 Summerwood Cir SE, Huntsville, AL, US**30 Floor 3 - Bath**

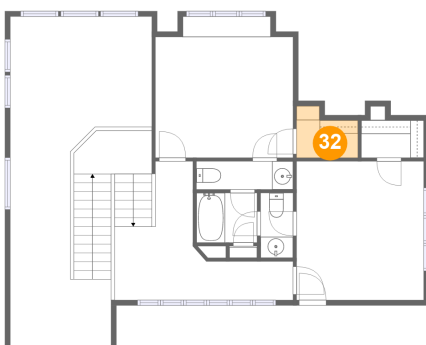
Dimensions: 9'2" x 2'8"
Area: 24 sq. ft
Counted as living area: Yes

Heated: Yes
Finished: Yes
Enclosed: Yes
Contiguous: Yes
Permitted: Yes
Wet space: Yes
Addition: No
Conversion: No

31 Floor 3 - Hall

Dimensions: 16'11" x 13'2"
Area: 203 sq. ft
Counted as living area: Yes

Heated: Yes
Finished: Yes
Enclosed: Yes
Contiguous: Yes
Permitted: Yes
Wet space: No
Addition: No
Conversion: No

32 Floor 3 - Cl

Dimensions: 5'9" x 4'10"
Area: 24 sq. ft
Counted as living area: Yes

Heated: Yes
Finished: Yes
Enclosed: Yes
Contiguous: Yes
Permitted: Yes
Wet space: No
Addition: No
Conversion: No