





25 Willowood Ave, Pocatello, Idaho, United States

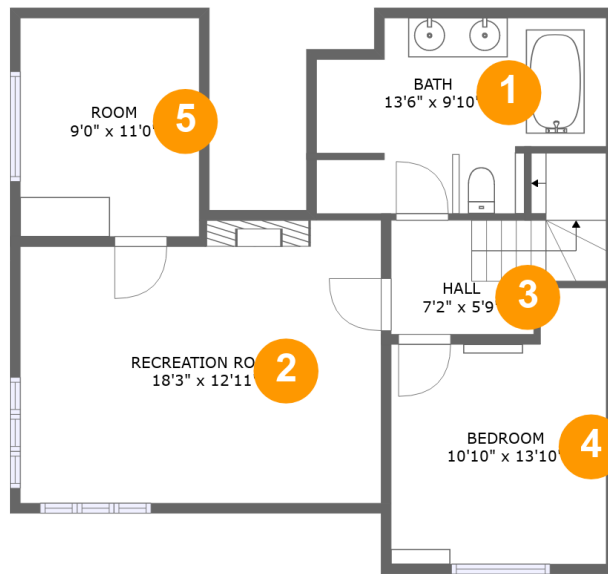


Property Summary

 **0** garages  **3** bedrooms  **2** bathrooms  **0** half baths

 **2** floors  **1,930** Gross Living Area sqft  **2,600** total sqft

25 Willowood Ave, Pocatello, Idaho, United States



Room Dimensions

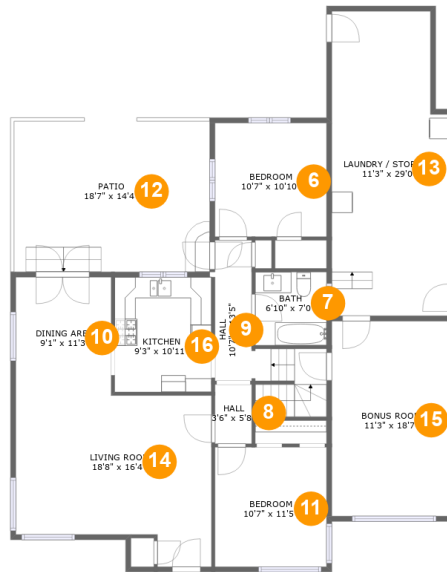
Floor 1

Total sqft: 759

Living area: 690

#	Room name	Dimensions	Area (sqft)	Counted as Living Area
1	Bath	13'6" x 9'10"	122 sq. ft	Yes
2	Recreation Room	18'3" x 12'11"	248 sq. ft	Yes
3	Hall	7'2" x 5'9"	65 sq. ft	No
4	Bedroom	10'10" x 13'10"	130 sq. ft	Yes
5	Room	9'0" x 11'0"	100 sq. ft	Yes

25 Willowood Ave, Pocatello, Idaho, United States



Room Dimensions

Floor 2

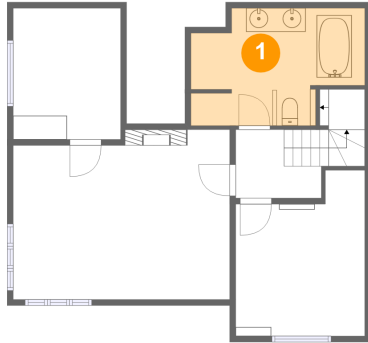
Total sqft: 1841

Living area: 1240

#	Room name	Dimensions	Area (sqft)	Counted as Living Area
6	Bedroom	10'7" x 10'10"	115 sq. ft	Yes
7	Bath	6'10" x 7'0"	47 sq. ft	Yes
8	Hall	3'6" x 5'8"	20 sq. ft	Yes
9	Hall	10'7" x 13'5"	90 sq. ft	Yes
10	Dining Area	9'1" x 11'3"	102 sq. ft	Yes
11	Bedroom	10'7" x 11'5"	121 sq. ft	Yes
12	Patio	18'7" x 14'4"	267 sq. ft	No
13	Laundry / Storage	11'3" x 29'0"	308 sq. ft	No
14	Living Room	18'8" x 16'4"	262 sq. ft	Yes
15	Bonus Room	11'3" x 18'7"	209 sq. ft	Yes
16	Kitchen	9'3" x 10'11"	101 sq. ft	Yes

25 Willowood Ave, Pocatello, Idaho, United States

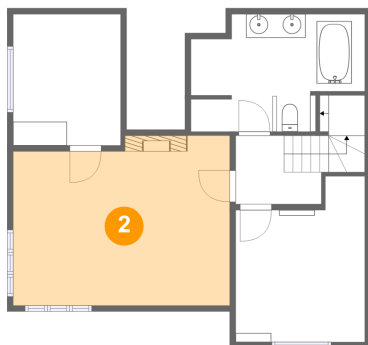
1 Floor 1 - Bath



Dimensions: 13'6" x 9'10"
Area: 122 sq. ft
Counted as Living Area:
Yes

Heated: Yes
Finished: Yes
Enclosed: Yes
Contiguous:
Yes
Permitted: Yes
Wet Space: Yes
Addition: No
Conversion: No

2 Floor 1 - Recreation Room

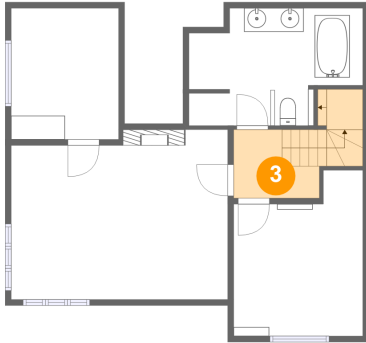


Dimensions: 18'3" x 12'11"
Area: 248 sq. ft
Counted as Living Area:
Yes

Heated: Yes
Finished: Yes
Enclosed: Yes
Contiguous:
Yes
Permitted: Yes
Wet Space: No
Addition: No
Conversion: No

25 Willowood Ave, Pocatello, Idaho, United States

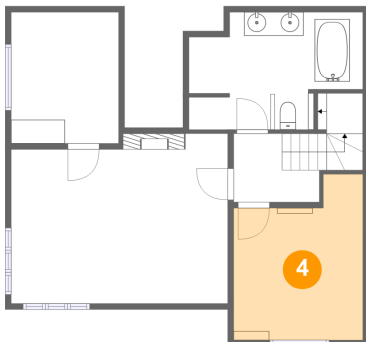
3 Floor 1 - Hall



Dimensions: 7'2" x 5'9"
Area: 65 sq. ft
Counted as Living Area: No

Heated: Yes
Finished: Yes
Enclosed: Yes
Contiguous: Yes
Permitted: Yes
Wet Space: No
Addition: No
Conversion: No

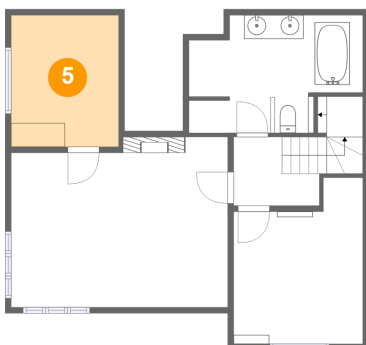
4 Floor 1 - Bedroom



Dimensions: 10'10" x 13'10"
Area: 130 sq. ft
Counted as Living Area: Yes

Heated: Yes
Finished: Yes
Enclosed: Yes
Contiguous: Yes
Permitted: Yes
Wet Space: No
Addition: No
Conversion: No

5 Floor 1 - Room

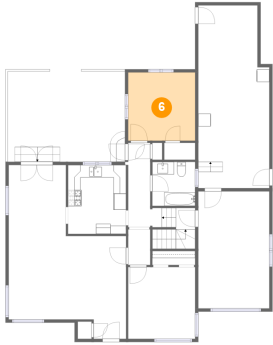


Dimensions: 9'0" x 11'0"
Area: 100 sq. ft
Counted as Living Area: Yes

Heated: Yes
Finished: Yes
Enclosed: Yes
Contiguous: Yes
Permitted: Yes
Wet Space: No
Addition: No
Conversion: No

25 Willowood Ave, Pocatello, Idaho, United States

6 Floor 2 - Bedroom



Dimensions: 10'7" x 10'10"
Area: 115 sq. ft
Counted as Living Area:
Yes

Heated: Yes
Finished: Yes
Enclosed: Yes
Contiguous:
Yes
Permitted: Yes
Wet Space: No
Addition: No
Conversion: No

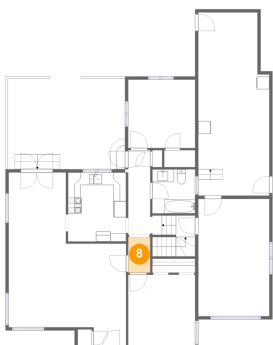
7 Floor 2 - Bath



Dimensions: 6'10" x 7'0"
Area: 47 sq. ft
Counted as Living Area:
Yes

Heated: Yes
Finished: Yes
Enclosed: Yes
Contiguous:
Yes
Permitted: Yes
Wet Space: Yes
Addition: No
Conversion: No

8 Floor 2 - Hall

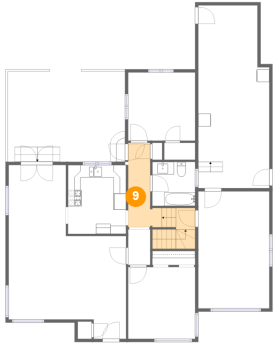


Dimensions: 3'6" x 5'8"
Area: 20 sq. ft
Counted as Living Area:
Yes

Heated: Yes
Finished: Yes
Enclosed: Yes
Contiguous:
Yes
Permitted: Yes
Wet Space: No
Addition: No
Conversion: No

25 Willowood Ave, Pocatello, Idaho, United States

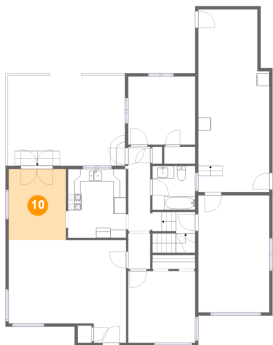
9 Floor 2 - Hall



Dimensions: 10'7" x 13'5"
Area: 90 sq. ft
Counted as Living Area:
Yes

Heated: Yes
Finished: Yes
Enclosed: Yes
Contiguous:
Yes
Permitted: Yes
Wet Space: No
Addition: No
Conversion: No

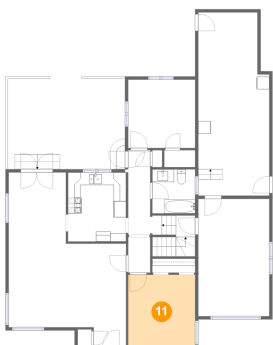
10 Floor 2 - Dining Area



Dimensions: 9'1" x 11'3"
Area: 102 sq. ft
Counted as Living Area:
Yes

Heated: Yes
Finished: Yes
Enclosed: Yes
Contiguous:
Yes
Permitted: Yes
Wet Space: No
Addition: No
Conversion: No

11 Floor 2 - Bedroom

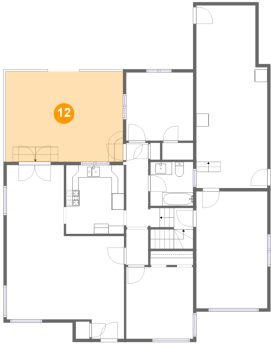


Dimensions: 10'7" x 11'5"
Area: 121 sq. ft
Counted as Living Area:
Yes

Heated: Yes
Finished: Yes
Enclosed: Yes
Contiguous:
Yes
Permitted: Yes
Wet Space: No
Addition: No
Conversion: No

25 Willowood Ave, Pocatello, Idaho, United States

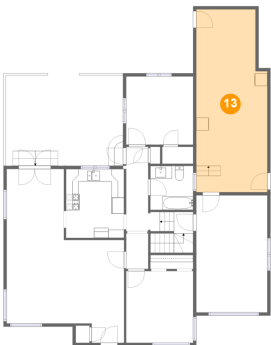
12 Floor 2 - Patio



Dimensions: 18'7" x 14'4"
Area: 267 sq. ft
Counted as Living Area: No

Heated: No
Finished: Yes
Enclosed: No
Contiguous: Yes
Permitted: Yes
Wet Space: No
Addition: No
Conversion: No

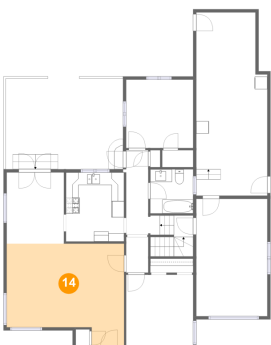
13 Floor 2 - Laundry / Storage



Dimensions: 11'3" x 29'0"
Area: 308 sq. ft
Counted as Living Area: No

Heated: No
Finished: No
Enclosed: No
Contiguous: Yes
Permitted: Yes
Wet Space: No
Addition: No
Conversion: No

14 Floor 2 - Living Room

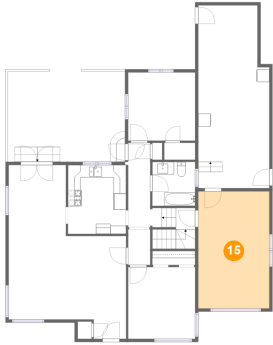


Dimensions: 18'8" x 16'4"
Area: 262 sq. ft
Counted as Living Area: Yes

Heated: Yes
Finished: Yes
Enclosed: Yes
Contiguous: Yes
Permitted: Yes
Wet Space: No
Addition: No
Conversion: No

25 Willowood Ave, Pocatello, Idaho, United States

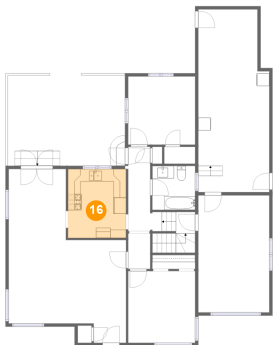
15 Floor 2 - Bonus Room



Dimensions: 11'3" x 18'7"
Area: 209 sq. ft
Counted as Living Area:
Yes

Heated: Yes
Finished: Yes
Enclosed: Yes
Contiguous:
Yes
Permitted: Yes
Wet Space: No
Addition: No
Conversion: No

16 Floor 2 - Kitchen



Dimensions: 9'3" x 10'11"
Area: 101 sq. ft
Counted as Living Area:
Yes

Heated: Yes
Finished: Yes
Enclosed: Yes
Contiguous:
Yes
Permitted: Yes
Wet Space: No
Addition: No
Conversion: No