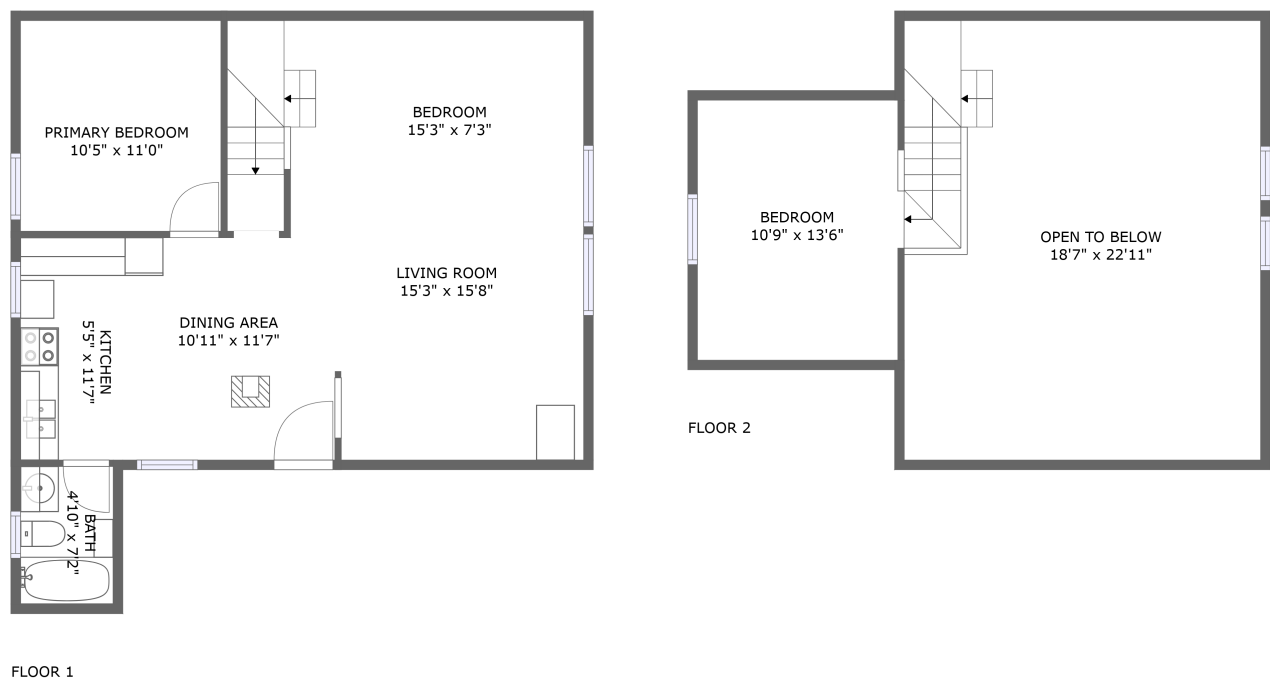


Home report

12425 Misty Ln,Nemo,SD,US



Total Area: 716 sq. ft
Floor 1: 597 sq. ft, Floor 2: 119 sq. ft
Excluded: Low Ceiling 179 sq. ft, Opentobelow 382 sq. ft, Walls: 114 sq. ft

Property summary

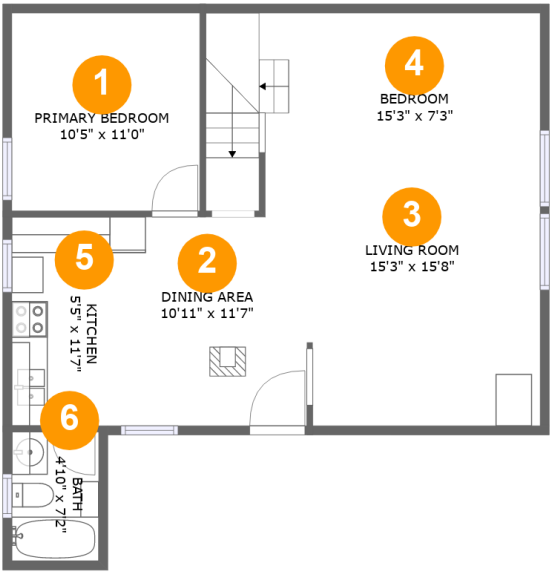
 **2** Floors

 **3** Bedrooms

 **1** Bathrooms

Home report

12425 Misty Ln,Nemo,SD,US



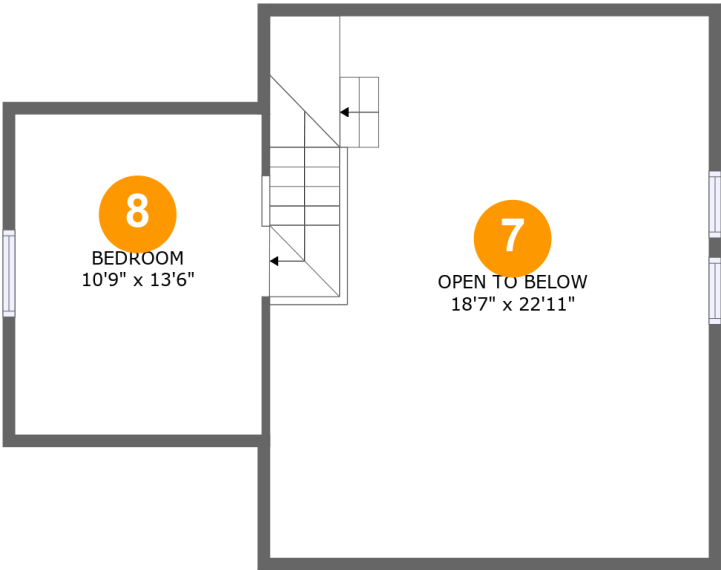
Room dimensions

Floor 1 Total:597sqft Excluded: 110sqft

#		Max Dimensions	sqft	Included
1	Primary Bedroom	10'5" x 11'0"	85 sq. ft	Yes
2	Dining Area	10'11" x 11'7"	115 sq. ft	Yes
3	Living Room	15'3" x 15'8"	194 sq. ft	Yes
4	Bedroom	15'3" x 7'3"	90 sq. ft	Yes
5	Kitchen	5'5" x 11'7"	67 sq. ft	Yes
6	Bath	4'10" x 7'2"	35 sq. ft	Yes

Home report

12425 Misty Ln,Nemo,SD,US



Room dimensions

Floor 2 Total:119sqft Excluded: 451sqft

#		Max Dimensions	sqft	Included
7	Open To Below	18'7" x 22'11"	381 sq. ft	No
8	Bedroom	10'9" x 13'6"	117 sq. ft	Yes

1 Floor 1 - Primary Bedroom



Max Dimensions: 10'5" x 11'0"
Calculated Area: 85 sq. ft
Included: Yes

Heated: Yes
Finished: Yes
Enclosed: Yes
Contiguous: Yes
Permitted: Yes
Wet space: No
Addition: No
Conversion: No

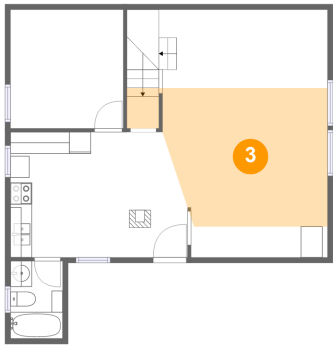
2 Floor 1 - Dining Area



Max Dimensions: 10'11" x 11'7"
Calculated Area: 115 sq. ft
Included: Yes

Heated: Yes
Finished: Yes
Enclosed: Yes
Contiguous: Yes
Permitted: Yes
Wet space: No
Addition: No
Conversion: No

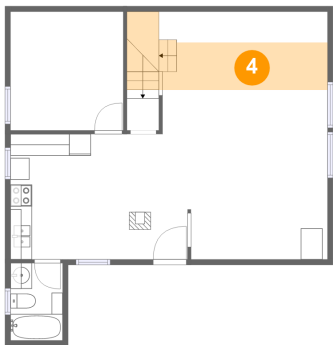
3 Floor 1 - Living Room



Max Dimensions: 15'3" x 15'8"
Calculated Area: 194 sq. ft
Included: Yes

Heated: Yes
Finished: Yes
Enclosed: Yes
Contiguous: Yes
Permitted: Yes
Wet space: No
Addition: No
Conversion: No

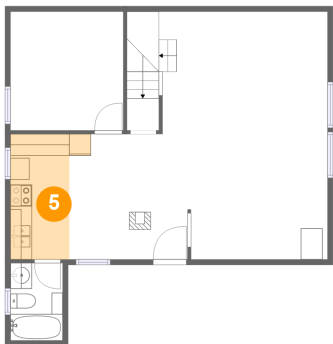
4 Floor 1 - Bedroom



Max Dimensions: 15'3" x 7'3"
Calculated Area: 90 sq. ft
Included: Yes

Heated: Yes
Finished: Yes
Enclosed: Yes
Contiguous: Yes
Permitted: Yes
Wet space: No
Addition: No
Conversion: No

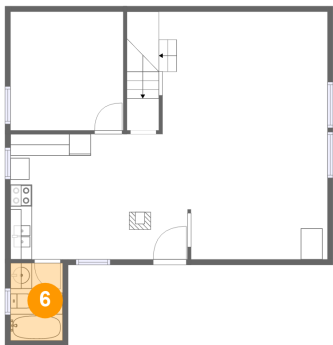
5 Floor 1 - Kitchen



Max Dimensions: 5'5" x 11'7"
Calculated Area: 67 sq. ft
Included: Yes

Heated: Yes
Finished: Yes
Enclosed: Yes
Contiguous: Yes
Permitted: Yes
Wet space: No
Addition: No
Conversion: No

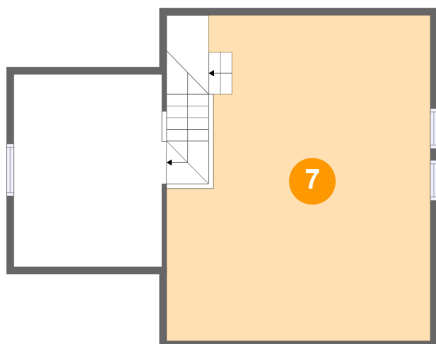
6 Floor 1 - Bath



Max Dimensions: 4'10" x 7'2"
Calculated Area: 35 sq. ft
Included: Yes

Heated: Yes
Finished: Yes
Enclosed: Yes
Contiguous: Yes
Permitted: Yes
Wet space: Yes
Addition: No
Conversion: No

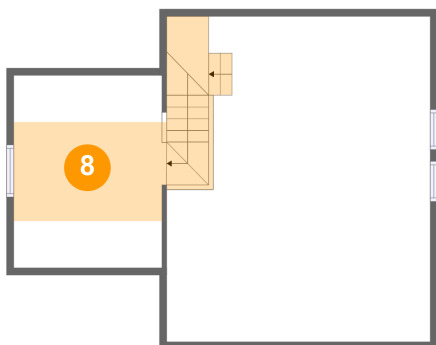
7 Floor 2 - Open To Below



Max Dimensions: 18'7" x 22'11"
Calculated Area: 381 sq. ft
Included: No

Heated: No
Finished: No
Enclosed: No
Contiguous: Yes
Permitted: No
Wet space: No
Addition: No
Conversion: No

8 Floor 2 - Bedroom



Max Dimensions: 10'9" x 13'6"
Calculated Area: 117 sq. ft
Included: Yes

Heated: Yes
Finished: Yes
Enclosed: Yes
Contiguous: Yes
Permitted: Yes
Wet space: No
Addition: No
Conversion: No