

# 8909 Royal Birkdale Dr, Chesterfield, VA, US



## Property summary

 **1** Garages

 **4** Bedrooms

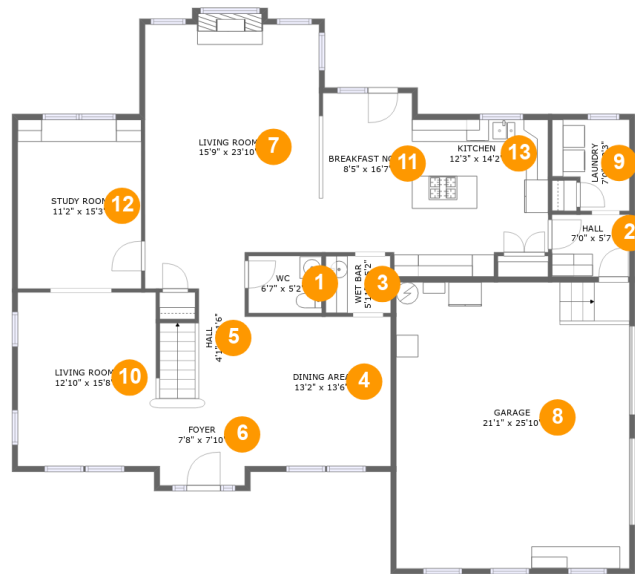
 **2** Bathrooms

 **1** Half baths

 **2** Floors

 **3,272** Gross living area sqft

 **4,260** Total sqft

**8909 Royal Birkdale Dr, Chesterfield, VA, US****Room dimensions**

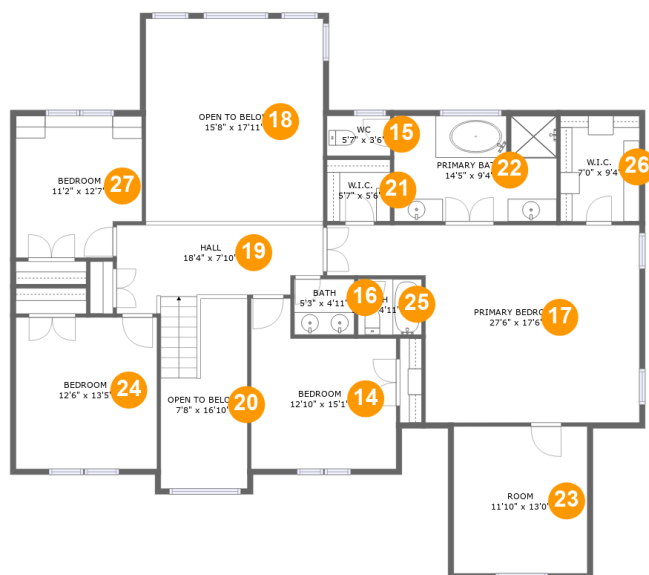
Floor 1

Total sqft: 2204 Living area: 1625

#		Dimensions	sqft	Counted as living area
1	WC	6'7" x 5'2"	34 sq. ft	Yes
2	Hall	7'0" x 5'7"	39 sq. ft	Yes
3	Wet Bar	5'11" x 5'2"	30 sq. ft	Yes
4	Dining Area	13'2" x 13'6"	178 sq. ft	Yes
5	Hall	4'1" x 11'6"	50 sq. ft	Yes
6	Foyer	7'8" x 7'10"	82 sq. ft	Yes
7	Living Room	15'9" x 23'10"	352 sq. ft	Yes
8	Garage	21'1" x 25'10"	544 sq. ft	No
9	Laundry	7'0" x 8'3"	50 sq. ft	Yes
10	Living Room	12'10" x 15'8"	199 sq. ft	Yes
11	Breakfast Nook	8'5" x 16'7"	124 sq. ft	Yes

**8909 Royal Birkdale Dr,Chesterfield,VA,US**

#		Dimensions	sqft	Counted as living area
12	Study Room	11'2" x 15'3"	170 sq. ft	Yes
13	Kitchen	12'3" x 14'2"	163 sq. ft	Yes

**8909 Royal Birkdale Dr, Chesterfield, VA, US****Room dimensions**

Floor 2

Total sqft: 2056 Living area: 1647

#		Dimensions	sqft	Counted as living area
14	Bedroom	12'10" x 15'1"	161 sq. ft	Yes
15	WC	5'7" x 3'6"	20 sq. ft	Yes
16	Bath	5'3" x 4'11"	26 sq. ft	Yes
17	Primary Bedroom	27'6" x 17'6"	370 sq. ft	Yes
18	Open To Below	15'8" x 17'11"	282 sq. ft	No
19	Hall	18'4" x 7'10"	147 sq. ft	Yes
20	Open To Below	7'8" x 16'10"	104 sq. ft	No
21	W.I.C.	5'7" x 5'6"	31 sq. ft	Yes
22	Primary Bath	14'5" x 9'4"	133 sq. ft	Yes
23	Room	11'10" x 13'0"	154 sq. ft	Yes
24	Bedroom	12'6" x 13'5"	168 sq. ft	Yes

**8909 Royal Birkdale Dr,Chesterfield,VA,US**

#		Dimensions	sqft	Counted as living area
25	Bath	5'8" x 4'11"	28 sq. ft	Yes
26	W.I.C.	7'0" x 9'4"	65 sq. ft	Yes
27	Bedroom	11'2" x 12'7"	132 sq. ft	Yes

# 8909 Royal Birkdale Dr, Chesterfield, VA, US

## 1 Floor 1 - WC



**Dimensions:** 6'7" x 5'2"  
**Area:** 34 sq. ft  
**Counted as living area:** Yes

**Heated:** Yes  
**Finished:** Yes  
**Enclosed:** Yes  
**Contiguous:** Yes  
**Permitted:** Yes  
**Wet space:** Yes  
**Addition:** No  
**Conversion:** No

## 2 Floor 1 - Hall



**Dimensions:** 7'0" x 5'7"  
**Area:** 39 sq. ft  
**Counted as living area:** Yes

**Heated:** Yes  
**Finished:** Yes  
**Enclosed:** Yes  
**Contiguous:** Yes  
**Permitted:** Yes  
**Wet space:** No  
**Addition:** No  
**Conversion:** No

# 8909 Royal Birkdale Dr, Chesterfield, VA, US

## 3 Floor 1 - Wet Bar



Dimensions: 5'11" x 5'2"  
Area: 30 sq. ft  
Counted as living area: Yes

Heated: Yes  
Finished: Yes  
Enclosed: Yes  
Contiguous: Yes  
Permitted: Yes  
Wet space: No  
Addition: No  
Conversion: No

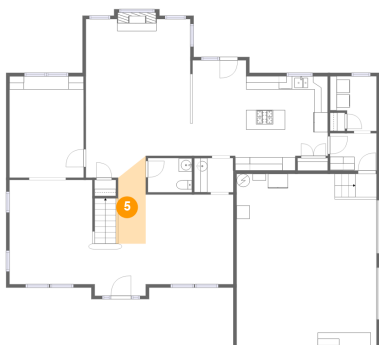
## 4 Floor 1 - Dining Area



Dimensions: 13'2" x 13'6"  
Area: 178 sq. ft  
Counted as living area: Yes

Heated: Yes  
Finished: Yes  
Enclosed: Yes  
Contiguous: Yes  
Permitted: Yes  
Wet space: No  
Addition: No  
Conversion: No

## 5 Floor 1 - Hall



Dimensions: 4'1" x 11'6"  
Area: 50 sq. ft  
Counted as living area: Yes

Heated: Yes  
Finished: Yes  
Enclosed: Yes  
Contiguous: Yes  
Permitted: Yes  
Wet space: No  
Addition: No  
Conversion: No

# 8909 Royal Birkdale Dr, Chesterfield, VA, US

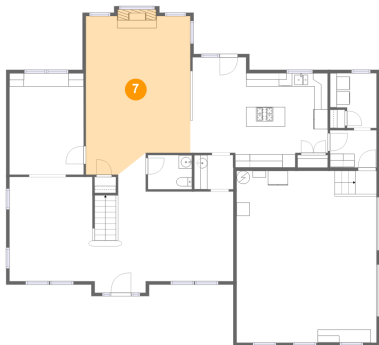
## 6 Floor 1 - Foyer



Dimensions: 7'8" x 7'10"  
Area: 82 sq. ft  
Counted as living area: Yes

Heated: Yes  
Finished: Yes  
Enclosed: Yes  
Contiguous: Yes  
Permitted: Yes  
Wet space: No  
Addition: No  
Conversion: No

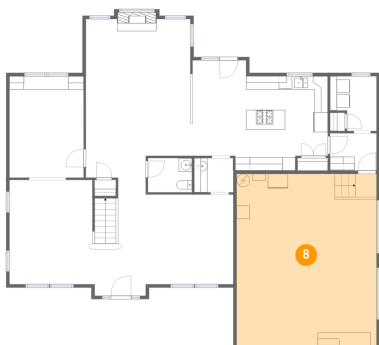
## 7 Floor 1 - Living Room



Dimensions: 15'9" x 23'10"  
Area: 352 sq. ft  
Counted as living area: Yes

Heated: Yes  
Finished: Yes  
Enclosed: Yes  
Contiguous: Yes  
Permitted: Yes  
Wet space: No  
Addition: No  
Conversion: No

## 8 Floor 1 - Garage



Dimensions: 21'1" x 25'10"  
Area: 544 sq. ft  
Counted as living area: No

Heated: No  
Finished: No  
Enclosed: Yes  
Contiguous: Yes  
Permitted: Yes  
Wet space: No  
Addition: No  
Conversion: No



**8909 Royal Birkdale Dr, Chesterfield, VA, US****9 Floor 1 - Laundry**

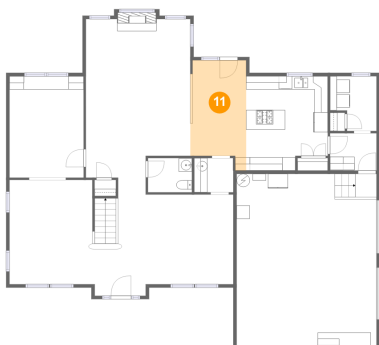
Dimensions: 7'0" x 8'3"  
 Area: 50 sq. ft  
 Counted as living area: Yes

Heated: Yes  
 Finished: Yes  
 Enclosed: Yes  
 Contiguous: Yes  
 Permitted: Yes  
 Wet space: No  
 Addition: No  
 Conversion: No

**10 Floor 1 - Living Room**

Dimensions: 12'10" x 15'8"  
 Area: 199 sq. ft  
 Counted as living area: Yes

Heated: Yes  
 Finished: Yes  
 Enclosed: Yes  
 Contiguous: Yes  
 Permitted: Yes  
 Wet space: No  
 Addition: No  
 Conversion: No

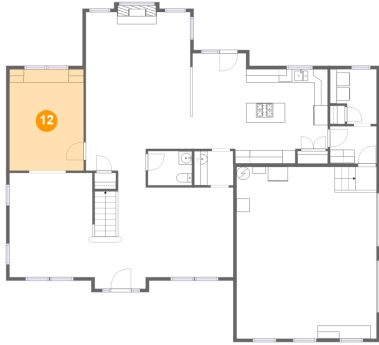
**11 Floor 1 - Breakfast Nook**

Dimensions: 8'5" x 16'7"  
 Area: 124 sq. ft  
 Counted as living area: Yes

Heated: Yes  
 Finished: Yes  
 Enclosed: Yes  
 Contiguous: Yes  
 Permitted: Yes  
 Wet space: No  
 Addition: No  
 Conversion: No

# 8909 Royal Birkdale Dr, Chesterfield, VA, US

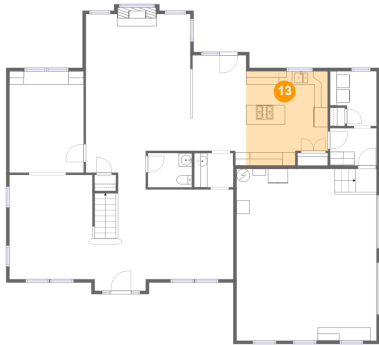
## 12 Floor 1 - Study Room



Dimensions: 11'2" x 15'3"  
Area: 170 sq. ft  
Counted as living area: Yes

Heated: Yes  
Finished: Yes  
Enclosed: Yes  
Contiguous: Yes  
Permitted: Yes  
Wet space: No  
Addition: No  
Conversion: No

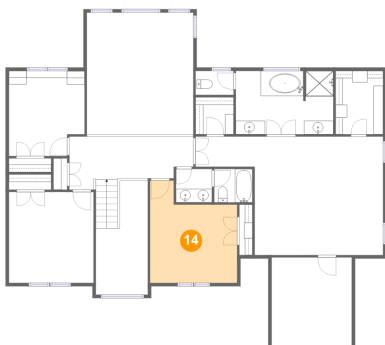
## 13 Floor 1 - Kitchen



Dimensions: 12'3" x 14'2"  
Area: 163 sq. ft  
Counted as living area: Yes

Heated: Yes  
Finished: Yes  
Enclosed: Yes  
Contiguous: Yes  
Permitted: Yes  
Wet space: No  
Addition: No  
Conversion: No

## 14 Floor 2 - Bedroom



Dimensions: 12'10" x 15'1"  
Area: 161 sq. ft  
Counted as living area: Yes

Heated: Yes  
Finished: Yes  
Enclosed: Yes  
Contiguous: Yes  
Permitted: Yes  
Wet space: No  
Addition: No  
Conversion: No

# 8909 Royal Birkdale Dr, Chesterfield, VA, US

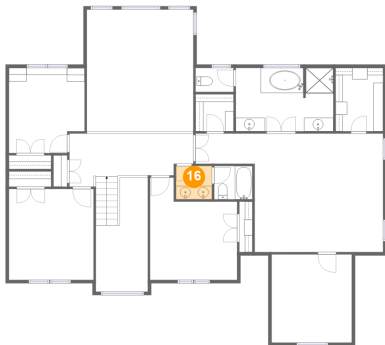
## 15 Floor 2 - WC



Dimensions: 5'7" x 3'6"  
Area: 20 sq. ft  
Counted as living area: Yes

Heated: Yes  
Finished: Yes  
Enclosed: Yes  
Contiguous: Yes  
Permitted: Yes  
Wet space: Yes  
Addition: No  
Conversion: No

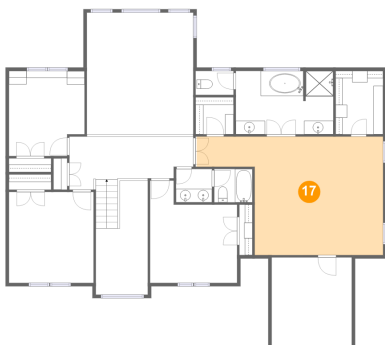
## 16 Floor 2 - Bath



Dimensions: 5'3" x 4'11"  
Area: 26 sq. ft  
Counted as living area: Yes

Heated: Yes  
Finished: Yes  
Enclosed: Yes  
Contiguous: Yes  
Permitted: Yes  
Wet space: Yes  
Addition: No  
Conversion: No

## 17 Floor 2 - Primary Bedroom

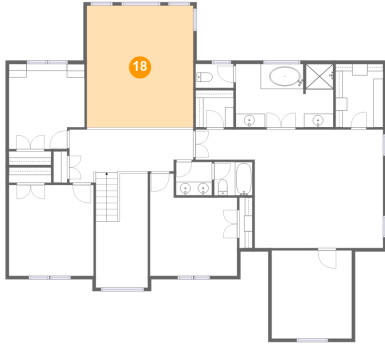


Dimensions: 27'6" x 17'6"  
Area: 370 sq. ft  
Counted as living area: Yes

Heated: Yes  
Finished: Yes  
Enclosed: Yes  
Contiguous: Yes  
Permitted: Yes  
Wet space: No  
Addition: No  
Conversion: No

# 8909 Royal Birkdale Dr, Chesterfield, VA, US

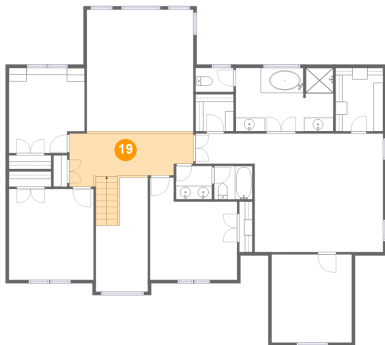
## 18 Floor 2 - Open To Below



Dimensions: 15'8" x 17'11"  
Area: 282 sq. ft  
Counted as living area: No

Heated: No  
Finished: No  
Enclosed: No  
Contiguous: Yes  
Permitted: No  
Wet space: No  
Addition: No  
Conversion: No

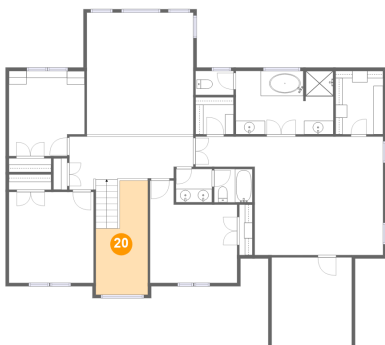
## 19 Floor 2 - Hall



Dimensions: 18'4" x 7'10"  
Area: 147 sq. ft  
Counted as living area: Yes

Heated: Yes  
Finished: Yes  
Enclosed: Yes  
Contiguous: Yes  
Permitted: Yes  
Wet space: No  
Addition: No  
Conversion: No

## 20 Floor 2 - Open To Below



Dimensions: 7'8" x 16'10"  
Area: 104 sq. ft  
Counted as living area: No

Heated: No  
Finished: No  
Enclosed: No  
Contiguous: Yes  
Permitted: No  
Wet space: No  
Addition: No  
Conversion: No

# 8909 Royal Birkdale Dr, Chesterfield, VA, US

## 21 Floor 2 - W.I.C.



Dimensions: 5'7" x 5'6"  
Area: 31 sq. ft  
Counted as living area: Yes

Heated: Yes  
Finished: Yes  
Enclosed: Yes  
Contiguous: Yes  
Permitted: Yes  
Wet space: No  
Addition: No  
Conversion: No

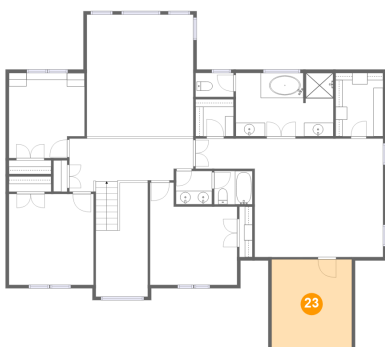
## 22 Floor 2 - Primary Bath



Dimensions: 14'5" x 9'4"  
Area: 133 sq. ft  
Counted as living area: Yes

Heated: Yes  
Finished: Yes  
Enclosed: Yes  
Contiguous: Yes  
Permitted: Yes  
Wet space: Yes  
Addition: No  
Conversion: No

## 23 Floor 2 - Room

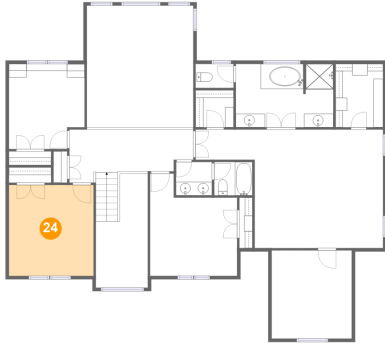


Dimensions: 11'10" x 13'0"  
Area: 154 sq. ft  
Counted as living area: Yes

Heated: Yes  
Finished: Yes  
Enclosed: Yes  
Contiguous: Yes  
Permitted: Yes  
Wet space: No  
Addition: No  
Conversion: No

# 8909 Royal Birkdale Dr, Chesterfield, VA, US

## 24 Floor 2 - Bedroom



Dimensions: 12'6" x 13'5"  
Area: 168 sq. ft  
Counted as living area: Yes

Heated: Yes  
Finished: Yes  
Enclosed: Yes  
Contiguous: Yes  
Permitted: Yes  
Wet space: No  
Addition: No  
Conversion: No

## 25 Floor 2 - Bath



Dimensions: 5'8" x 4'11"  
Area: 28 sq. ft  
Counted as living area: Yes

Heated: Yes  
Finished: Yes  
Enclosed: Yes  
Contiguous: Yes  
Permitted: Yes  
Wet space: Yes  
Addition: No  
Conversion: No

## 26 Floor 2 - W.I.C.



Dimensions: 7'0" x 9'4"  
Area: 65 sq. ft  
Counted as living area: Yes

Heated: Yes  
Finished: Yes  
Enclosed: Yes  
Contiguous: Yes  
Permitted: Yes  
Wet space: No  
Addition: No  
Conversion: No

**27** Floor 2 - Bedroom



**Dimensions:** 11'2" x 12'7"  
**Area:** 132 sq. ft  
**Counted as living area:** Yes

**Heated:** Yes  
**Finished:** Yes  
**Enclosed:** Yes  
**Contiguous:** Yes  
**Permitted:** Yes  
**Wet space:** No  
**Addition:** No  
**Conversion:** No