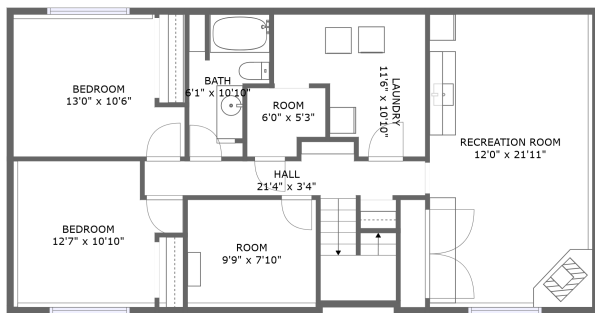
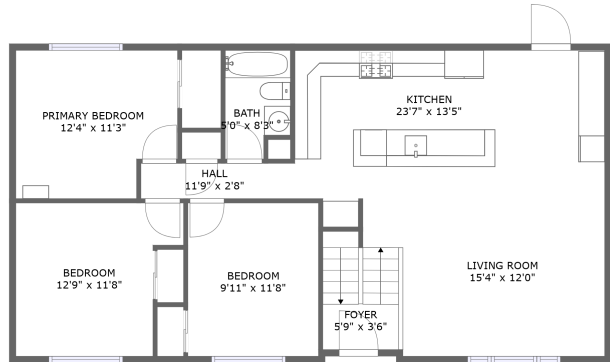


14950 Hills View Dr, Piedmont, SD, US




FLOOR 1



FLOOR 2

Property summary

 **0** Garages

 **5** Bedrooms

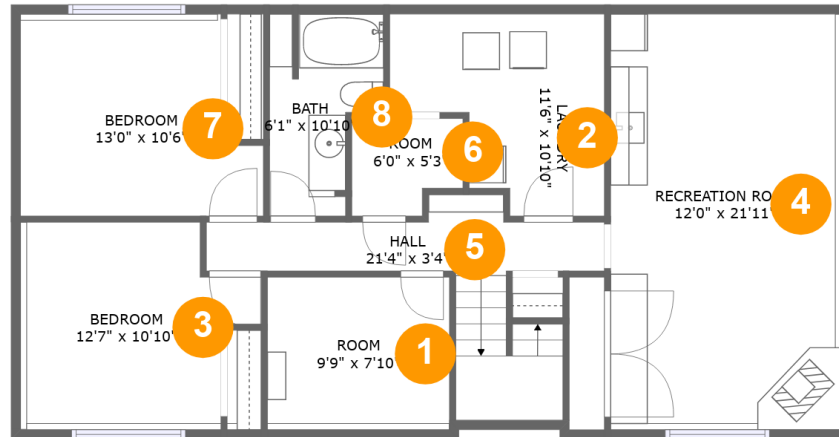
 **2** Bathrooms

 **0** Half baths

 **2** Floors

 **1,900** Gross living area sqft

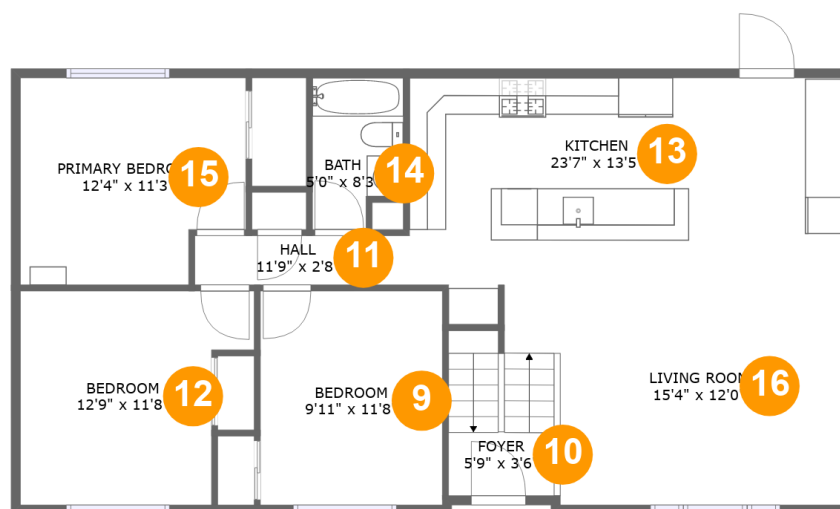
 **2,157** Total sqft

14950 Hills View Dr, Piedmont, SD, US**Room dimensions**

Floor 1

Total sqft: 1047 Living area: 790

#		Dimensions	sqft	Counted as living area
1	Room	9'9" x 7'10"	80 sq. ft	Yes
2	Laundry	11'6" x 10'10"	98 sq. ft	No
3	Bedroom	12'7" x 10'10"	122 sq. ft	Yes
4	Recreation Room	12'0" x 21'11"	276 sq. ft	Yes
5	Hall	21'4" x 3'4"	99 sq. ft	Yes
6	Room	6'0" x 5'3"	28 sq. ft	Yes
7	Bedroom	13'0" x 10'6"	125 sq. ft	No
8	Bath	6'1" x 10'10"	54 sq. ft	Yes

14950 Hills View Dr, Piedmont, SD, US**Room dimensions**

Floor 2

Total sqft: 1110 Living area: 1110

#		Dimensions	sqft	Counted as living area
9	Bedroom	9'11" x 11'8"	116 sq. ft	Yes
10	Foyer	5'9" x 3'6"	62 sq. ft	Yes
11	Hall	11'9" x 2'8"	31 sq. ft	Yes
12	Bedroom	12'9" x 11'8"	129 sq. ft	Yes
13	Kitchen	23'7" x 13'5"	272 sq. ft	Yes
14	Bath	5'0" x 8'3"	37 sq. ft	Yes
15	Primary Bedroom	12'4" x 11'3"	129 sq. ft	Yes
16	Living Room	15'4" x 12'0"	184 sq. ft	Yes

14950 Hills View Dr, Piedmont, SD, US

1 Floor 1 - Room



Dimensions: 9'9" x 7'10"
Area: 80 sq. ft
Counted as living area: Yes

Heated: Yes
Finished: Yes
Enclosed: Yes
Contiguous: Yes
Permitted: Yes
Wet space: No
Addition: No
Conversion: No

2 Floor 1 - Laundry

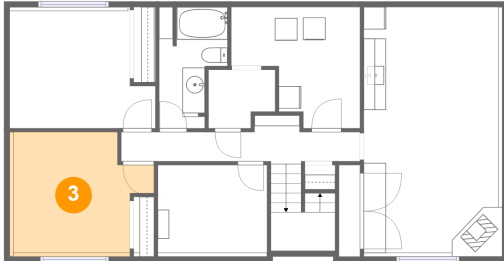


Dimensions: 11'6" x 10'10"
Area: 98 sq. ft
Counted as living area: No

Heated: Yes
Finished: No
Enclosed: Yes
Contiguous: Yes
Permitted: Yes
Wet space: No
Addition: No
Conversion: No

14950 Hills View Dr, Piedmont, SD, US

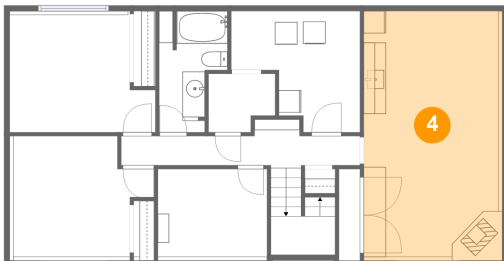
3 Floor 1 - Bedroom



Dimensions: 12'7" x 10'10"
Area: 122 sq. ft
Counted as living area: Yes

Heated: Yes
Finished: Yes
Enclosed: Yes
Contiguous: Yes
Permitted: Yes
Wet space: No
Addition: No
Conversion: No

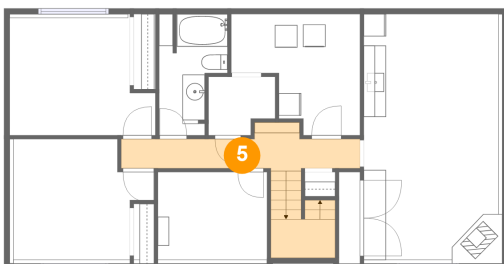
4 Floor 1 - Recreation Room



Dimensions: 12'0" x 21'11"
Area: 276 sq. ft
Counted as living area: Yes

Heated: Yes
Finished: Yes
Enclosed: Yes
Contiguous: Yes
Permitted: Yes
Wet space: No
Addition: No
Conversion: No

5 Floor 1 - Hall



Dimensions: 21'4" x 3'4"
Area: 99 sq. ft
Counted as living area: Yes

Heated: Yes
Finished: Yes
Enclosed: Yes
Contiguous: Yes
Permitted: Yes
Wet space: No
Addition: No
Conversion: No

14950 Hills View Dr, Piedmont, SD, US

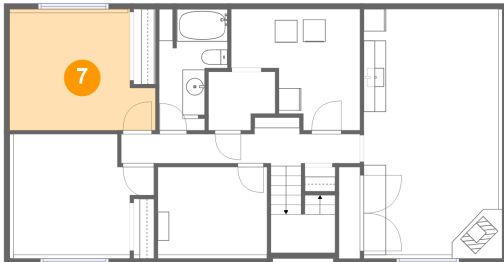
6 Floor 1 - Room



Dimensions: 6'0" x 5'3"
Area: 28 sq. ft
Counted as living area: Yes

Heated: Yes
Finished: Yes
Enclosed: Yes
Contiguous: Yes
Permitted: Yes
Wet space: No
Addition: No
Conversion: No

7 Floor 1 - Bedroom



Dimensions: 13'0" x 10'6"
Area: 125 sq. ft
Counted as living area: No

Heated: Yes
Finished: No
Enclosed: Yes
Contiguous: Yes
Permitted: Yes
Wet space: No
Addition: No
Conversion: No

8 Floor 1 - Bath

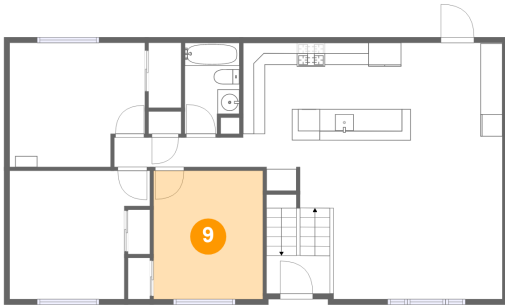


Dimensions: 6'1" x 10'10"
Area: 54 sq. ft
Counted as living area: Yes

Heated: Yes
Finished: Yes
Enclosed: Yes
Contiguous: Yes
Permitted: Yes
Wet space: Yes
Addition: No
Conversion: No

14950 Hills View Dr, Piedmont, SD, US

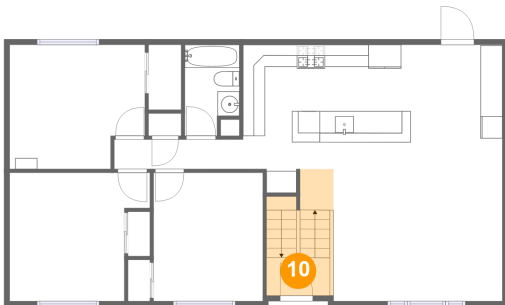
9 Floor 2 - Bedroom



Dimensions: 9'11" x 11'8"
Area: 116 sq. ft
Counted as living area: Yes

Heated: Yes
Finished: Yes
Enclosed: Yes
Contiguous: Yes
Permitted: Yes
Wet space: No
Addition: No
Conversion: No

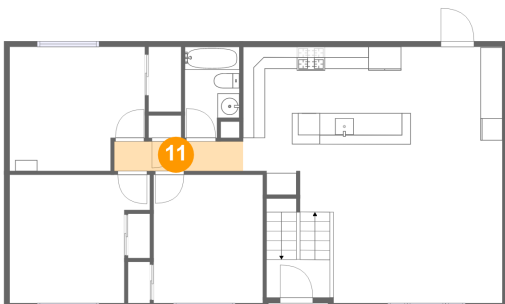
10 Floor 2 - Foyer



Dimensions: 5'9" x 3'6"
Area: 62 sq. ft
Counted as living area: Yes

Heated: Yes
Finished: Yes
Enclosed: Yes
Contiguous: Yes
Permitted: Yes
Wet space: No
Addition: No
Conversion: No

11 Floor 2 - Hall

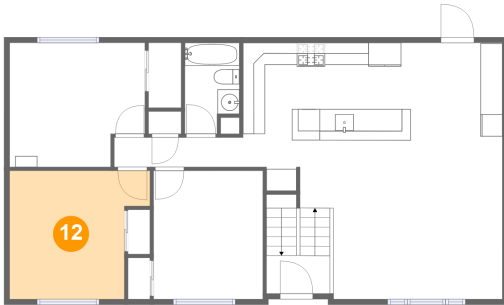


Dimensions: 11'9" x 2'8"
Area: 31 sq. ft
Counted as living area: Yes

Heated: Yes
Finished: Yes
Enclosed: Yes
Contiguous: Yes
Permitted: Yes
Wet space: No
Addition: No
Conversion: No

14950 Hills View Dr, Piedmont, SD, US

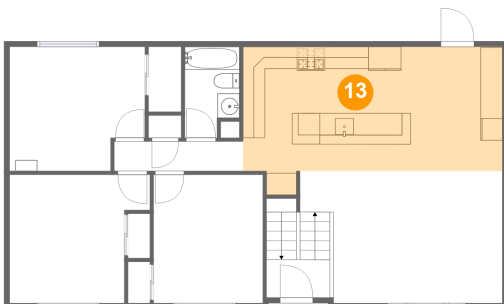
12 Floor 2 - Bedroom



Dimensions: 12'9" x 11'8"
Area: 129 sq. ft
Counted as living area: Yes

Heated: Yes
Finished: Yes
Enclosed: Yes
Contiguous: Yes
Permitted: Yes
Wet space: No
Addition: No
Conversion: No

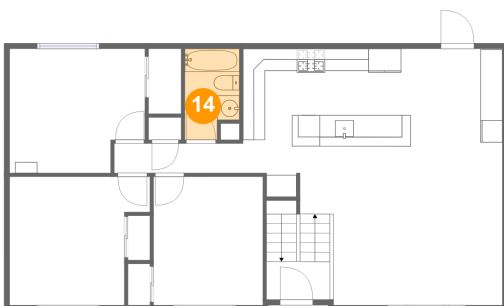
13 Floor 2 - Kitchen



Dimensions: 23'7" x 13'5"
Area: 272 sq. ft
Counted as living area: Yes

Heated: Yes
Finished: Yes
Enclosed: Yes
Contiguous: Yes
Permitted: Yes
Wet space: No
Addition: No
Conversion: No

14 Floor 2 - Bath

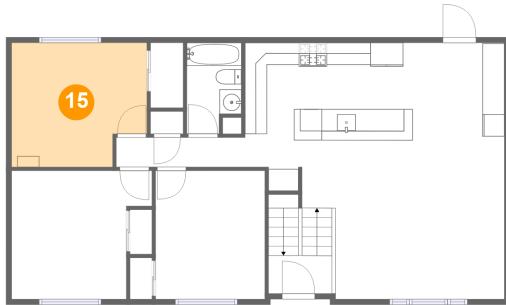


Dimensions: 5'0" x 8'3"
Area: 37 sq. ft
Counted as living area: Yes

Heated: Yes
Finished: Yes
Enclosed: Yes
Contiguous: Yes
Permitted: Yes
Wet space: Yes
Addition: No
Conversion: No

14950 Hills View Dr, Piedmont, SD, US

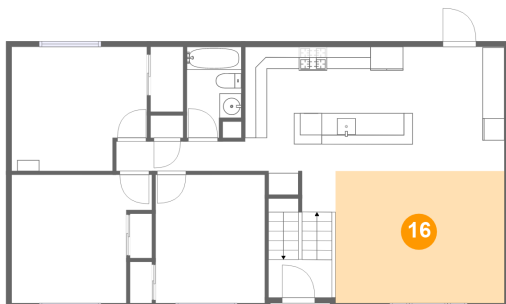
15 Floor 2 - Primary Bedroom



Dimensions: 12'4" x 11'3"
Area: 129 sq. ft
Counted as living area: Yes

Heated: Yes
Finished: Yes
Enclosed: Yes
Contiguous: Yes
Permitted: Yes
Wet space: No
Addition: No
Conversion: No

16 Floor 2 - Living Room



Dimensions: 15'4" x 12'0"
Area: 184 sq. ft
Counted as living area: Yes

Heated: Yes
Finished: Yes
Enclosed: Yes
Contiguous: Yes
Permitted: Yes
Wet space: No
Addition: No
Conversion: No