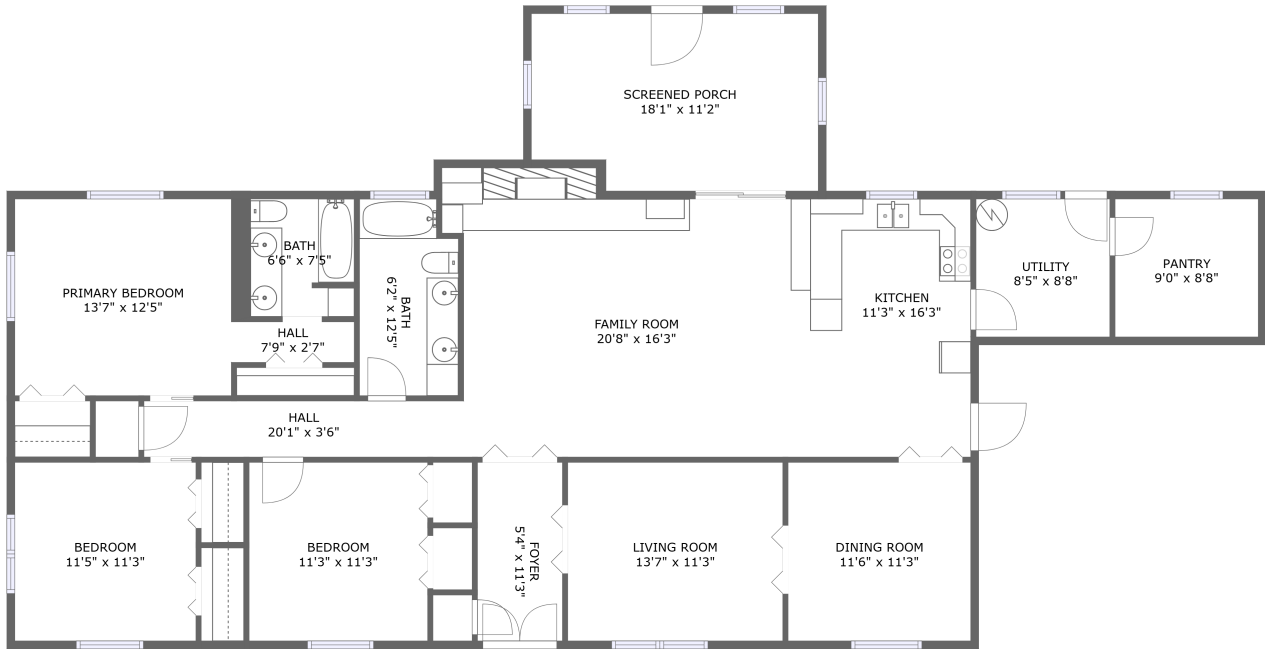


461 Sugar Lane, Lufkin, Angelina County, Texas, United States, 75904

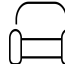


FLOOR 1

Property Summary

 **0** garages  **3** bedrooms  **2** bathrooms  **0** half baths

 **1** floors

 **1,786** Gross Living Area sqft

 **2,177** total sqft

461 Sugar Lane, Lufkin, Angelina County, Texas, United States, 75904



Room Dimensions

Floor 1

Total sqft: 2177

Living area: 1786

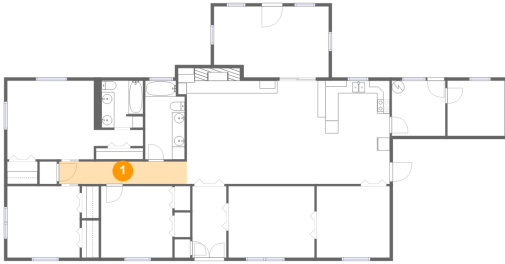
#	Room name	Dimensions	Area (sqft)	Counted as Living Area
1	Hall	20'1" x 3'6"	71 sq. ft	Yes
2	Screened Porch	18'1" x 11'2"	193 sq. ft	No
3	Family Room	20'8" x 16'3"	358 sq. ft	Yes
4	Hall	7'9" x 2'7"	20 sq. ft	Yes
5	Bath	6'6" x 7'5"	47 sq. ft	Yes
6	Living Room	13'7" x 11'3"	152 sq. ft	Yes
7	Bedroom	11'5" x 11'3"	128 sq. ft	Yes
8	Bath	6'2" x 12'5"	74 sq. ft	Yes
9	Primary Bedroom	13'7" x 12'5"	169 sq. ft	Yes
10	Kitchen	11'3" x 16'3"	184 sq. ft	Yes
11	Bedroom	11'3" x 11'3"	127 sq. ft	Yes

**461 Sugar Lane, Lufkin, Angelina County, Texas,
United States, 75904**

#	Room name	Dimensions	Area (sqft)	Counted as Living Area
12	Pantry	9'0" x 8'8"	78 sq. ft	No
13	Dining Room	11'6" x 11'3"	129 sq. ft	Yes
14	Foyer	5'4" x 11'3"	60 sq. ft	Yes
15	Utility	8'5" x 8'8"	73 sq. ft	No

461 Sugar Lane, Lufkin, Angelina County, Texas, United States, 75904

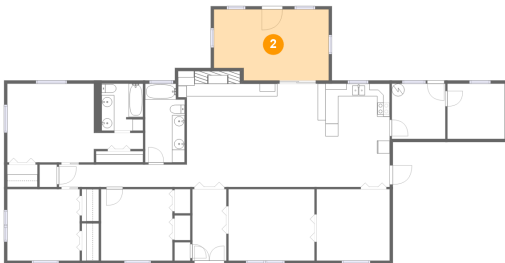
1 Floor 1 - Hall



Dimensions: 20'1" x 3'6"
Area: 71 sq. ft
Counted as Living Area:
Yes

Heated: Yes
Finished: Yes
Enclosed: Yes
Contiguous:
Yes
Permitted: Yes
Wet Space: No
Addition: No
Conversion: No

2 Floor 1 - Screened Porch

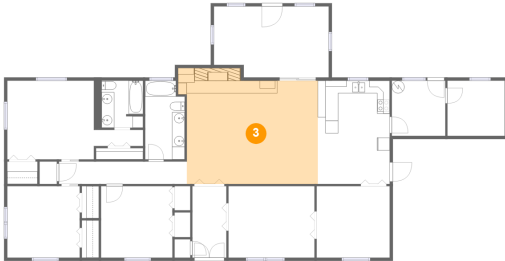


Dimensions: 18'1" x 11'2"
Area: 193 sq. ft
Counted as Living Area: No

Heated: No
Finished: Yes
Enclosed: No
Contiguous: Yes
Permitted: Yes
Wet Space: No
Addition: No
Conversion: No

461 Sugar Lane, Lufkin, Angelina County, Texas, United States, 75904

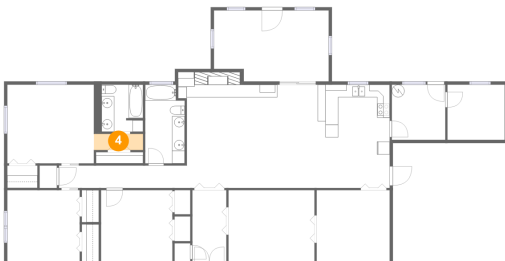
3 Floor 1 - Family Room



Dimensions: 20'8" x 16'3"
Area: 358 sq. ft
Counted as Living Area:
Yes

Heated: Yes
Finished: Yes
Enclosed: Yes
Contiguous:
Yes
Permitted: Yes
Wet Space: No
Addition: No
Conversion: No

4 Floor 1 - Hall



Dimensions: 7'9" x 2'7"
Area: 20 sq. ft
Counted as Living Area:
Yes

Heated: Yes
Finished: Yes
Enclosed: Yes
Contiguous:
Yes
Permitted: Yes
Wet Space: No
Addition: No
Conversion: No

5 Floor 1 - Bath



Dimensions: 6'6" x 7'5"
Area: 47 sq. ft
Counted as Living Area:
Yes

Heated: Yes
Finished: Yes
Enclosed: Yes
Contiguous:
Yes
Permitted: Yes
Wet Space: Yes
Addition: No
Conversion: No

461 Sugar Lane, Lufkin, Angelina County, Texas, United States, 75904

6 Floor 1 - Living Room



Dimensions: 13'7" x 11'3"
Area: 152 sq. ft
Counted as Living Area:
Yes

Heated: Yes
Finished: Yes
Enclosed: Yes
Contiguous:
Yes
Permitted: Yes
Wet Space: No
Addition: No
Conversion: No

7 Floor 1 - Bedroom



Dimensions: 11'5" x 11'3"
Area: 128 sq. ft
Counted as Living Area:
Yes

Heated: Yes
Finished: Yes
Enclosed: Yes
Contiguous:
Yes
Permitted: Yes
Wet Space: No
Addition: No
Conversion: No

8 Floor 1 - Bath



Dimensions: 6'2" x 12'5"
Area: 74 sq. ft
Counted as Living Area:
Yes

Heated: Yes
Finished: Yes
Enclosed: Yes
Contiguous:
Yes
Permitted: Yes
Wet Space: Yes
Addition: No
Conversion: No

461 Sugar Lane, Lufkin, Angelina County, Texas, United States, 75904

9 Floor 1 - Primary Bedroom



Dimensions: 13'7" x 12'5"
Area: 169 sq. ft
Counted as Living Area:
Yes

Heated: Yes
Finished: Yes
Enclosed: Yes
Contiguous:
Yes
Permitted: Yes
Wet Space: No
Addition: No
Conversion: No

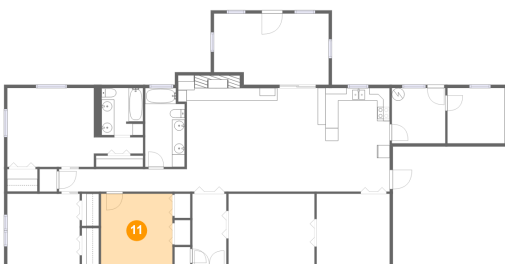
10 Floor 1 - Kitchen



Dimensions: 11'3" x 16'3"
Area: 184 sq. ft
Counted as Living Area:
Yes

Heated: Yes
Finished: Yes
Enclosed: Yes
Contiguous:
Yes
Permitted: Yes
Wet Space: No
Addition: No
Conversion: No

11 Floor 1 - Bedroom



Dimensions: 11'3" x 11'3"
Area: 127 sq. ft
Counted as Living Area:
Yes

Heated: Yes
Finished: Yes
Enclosed: Yes
Contiguous:
Yes
Permitted: Yes
Wet Space: No
Addition: No
Conversion: No

461 Sugar Lane, Lufkin, Angelina County, Texas, United States, 75904

12 Floor 1 - Pantry



Dimensions: 9'0" x 8'8"
Area: 78 sq. ft
Counted as Living Area: No

Heated: Yes
Finished: Yes
Enclosed: Yes
Contiguous: No
Permitted: Yes
Wet Space: No
Addition: No
Conversion: No

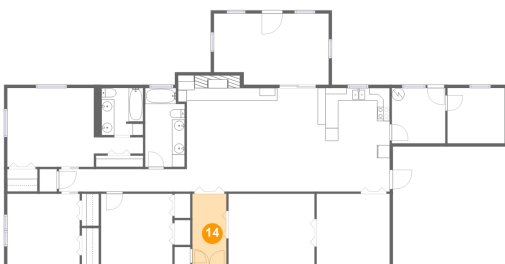
13 Floor 1 - Dining Room



Dimensions: 11'6" x 11'3"
Area: 129 sq. ft
Counted as Living Area: Yes

Heated: Yes
Finished: Yes
Enclosed: Yes
Contiguous: Yes
Permitted: Yes
Wet Space: No
Addition: No
Conversion: No

14 Floor 1 - Foyer



Dimensions: 5'4" x 11'3"
Area: 60 sq. ft
Counted as Living Area: Yes

Heated: Yes
Finished: Yes
Enclosed: Yes
Contiguous: Yes
Permitted: Yes
Wet Space: No
Addition: No
Conversion: No

**461 Sugar Lane, Lufkin, Angelina County, Texas,
United States, 75904**

15 Floor 1 - Utility



Dimensions: 8'5" x 8'8"
Area: 73 sq. ft
Counted as Living Area: No

Heated: Yes
Finished: No
Enclosed: Yes
Contiguous: Yes
Permitted: Yes
Wet Space: No
Addition: No
Conversion: No