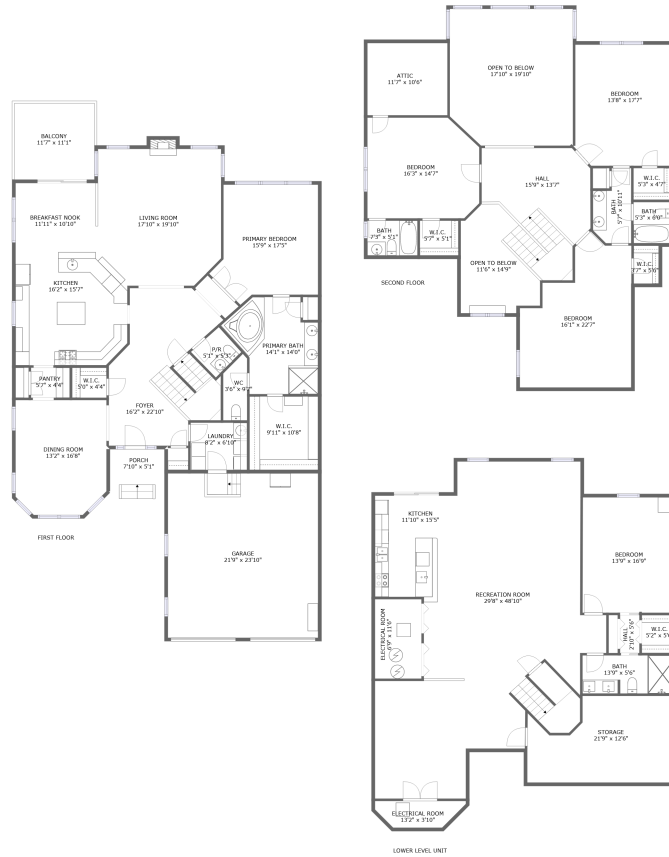


26 Donlavage Way, West Orange, Essex County, New Jersey, United States, 07052

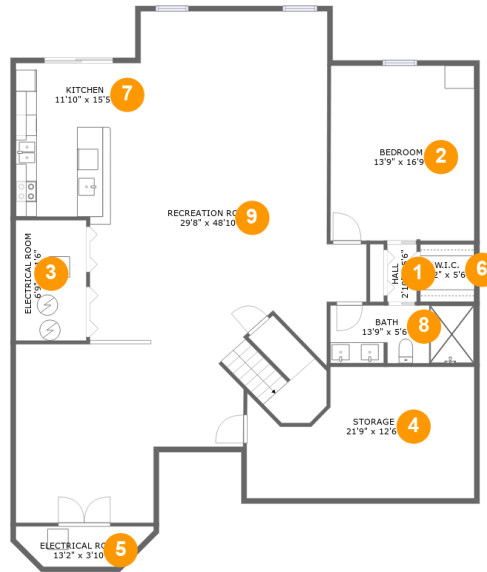


Property Summary

1 garages **5** bedrooms **4** bathrooms **1** half baths

3 floors **4,960** Gross Living Area sqft **6,699** total sqft

**26 Donlavage Way, West Orange, Essex County,
New Jersey, United States, 07052**



Room Dimensions

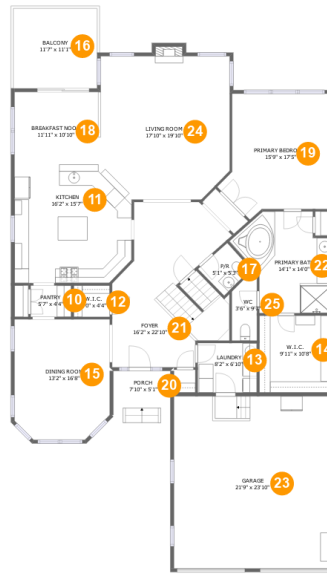
Floor 1

Total sqft: 2017

Living area: 1636

#	Room name	Dimensions	Area (sqft)	Counted as Living Area
1	Hall	2'10" x 5'6"	15 sq. ft	Yes
2	Bedroom	13'9" x 16'9"	230 sq. ft	Yes
3	Electrical Room	6'9" x 11'6"	78 sq. ft	No
4	Storage	21'9" x 12'6"	234 sq. ft	No
5	Electrical Room	13'2" x 3'10"	42 sq. ft	No
6	W.i.c.	5'2" x 5'6"	28 sq. ft	Yes
7	Kitchen	11'10" x 15'5"	178 sq. ft	Yes
8	Bath	13'9" x 5'6"	75 sq. ft	Yes
9	Recreation Room	29'8" x 48'10"	998 sq. ft	Yes

26 Donlavage Way, West Orange, Essex County, New Jersey, United States, 07052



Room Dimensions

Floor 2

Total sqft: 2763

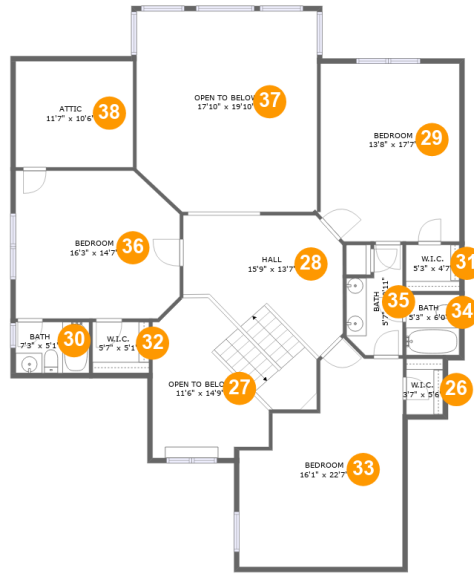
Living area: 2041

#	Room name	Dimensions	Area (sqft)	Counted as Living Area
10	Pantry	5'7" x 4'4"	24 sq. ft	Yes
11	Kitchen	16'2" x 15'7"	238 sq. ft	Yes
12	W.i.c.	5'0" x 4'4"	22 sq. ft	Yes
13	Laundry	8'2" x 6'10"	56 sq. ft	Yes
14	W.i.c.	9'11" x 10'8"	106 sq. ft	Yes
15	Dining Room	13'2" x 16'8"	210 sq. ft	Yes
16	Balcony	11'7" x 11'1"	128 sq. ft	No
17	P/R	5'1" x 5'3"	27 sq. ft	Yes
18	Breakfast Nook	11'11" x 10'10"	130 sq. ft	Yes
19	Primary Bedroom	15'9" x 17'5"	225 sq. ft	Yes
20	Porch	7'10" x 5'1"	41 sq. ft	No

**26 Donlavage Way, West Orange, Essex County,
New Jersey, United States, 07052**

#	Room name	Dimensions	Area (sqft)	Counted as Living Area
21	Foyer	16'2" x 22'10"	291 sq. ft	Yes
22	Primary Bath	14'1" x 14'0"	148 sq. ft	Yes
23	Garage	21'9" x 23'10"	518 sq. ft	No
24	Living Room	17'10" x 19'10"	343 sq. ft	Yes
25	Wc	3'6" x 9'7"	29 sq. ft	Yes

26 Donlavage Way, West Orange, Essex County, New Jersey, United States, 07052



Room Dimensions

Floor 3

Total sqft: 1919

Living area: 1283

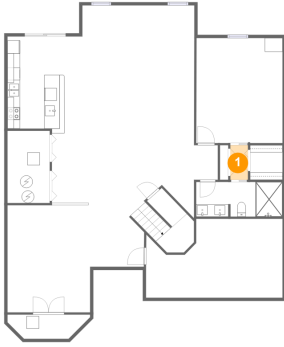
#	Room name	Dimensions	Area (sqft)	Counted as Living Area
26	W.i.c.	3'7" x 5'6"	20 sq. ft	Yes
27	Open To Below	11'6" x 14'9"	133 sq. ft	No
28	Hall	15'9" x 13'7"	231 sq. ft	Yes
29	Bedroom	13'8" x 17'7"	238 sq. ft	Yes
30	Bath	7'3" x 5'1"	37 sq. ft	Yes
31	W.i.c.	5'3" x 4'7"	24 sq. ft	Yes
32	W.i.c.	5'7" x 5'1"	28 sq. ft	Yes
33	Bedroom	16'1" x 22'7"	281 sq. ft	Yes
34	Bath	5'3" x 6'0"	31 sq. ft	Yes
35	Bath	5'7" x 10'11"	50 sq. ft	Yes
36	Bedroom	16'3" x 14'7"	224 sq. ft	Yes

**26 Donlavage Way, West Orange, Essex County,
New Jersey, United States, 07052**

#	Room name	Dimensions	Area (sqft)	Counted as Living Area
37	Open To Below	17'10" x 19'10"	344 sq. ft	No
38	Attic	11'7" x 10'6"	60 sq. ft	No

26 Donlavage Way, West Orange, Essex County, New Jersey, United States, 07052

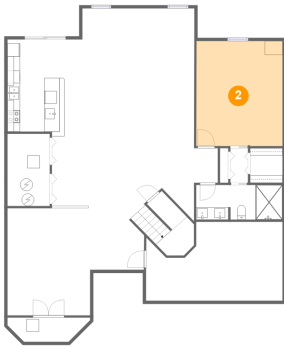
1 Floor 1 - Hall



Dimensions: 2'10" x 5'6"
Area: 15 sq. ft
Counted as Living Area:
Yes

Heated: Yes
Finished: Yes
Enclosed: Yes
Contiguous:
Yes
Permitted: Yes
Wet Space: No
Addition: No
Conversion: No

2 Floor 1 - Bedroom



Dimensions: 13'9" x 16'9"
Area: 230 sq. ft
Counted as Living Area:
Yes

Heated: Yes
Finished: Yes
Enclosed: Yes
Contiguous:
Yes
Permitted: Yes
Wet Space: No
Addition: No
Conversion: No

26 Donlavage Way, West Orange, Essex County, New Jersey, United States, 07052

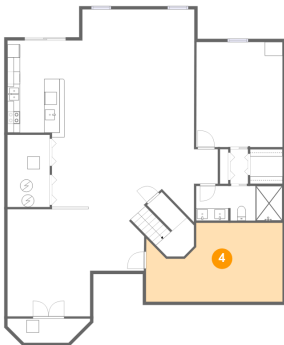
3 Floor 1 - Electrical Room



Dimensions: 6'9" x 11'6"
Area: 78 sq. ft
Counted as Living Area: No

Heated: No
Finished: No
Enclosed: Yes
Contiguous: Yes
Permitted: Yes
Wet Space: No
Addition: No
Conversion: No

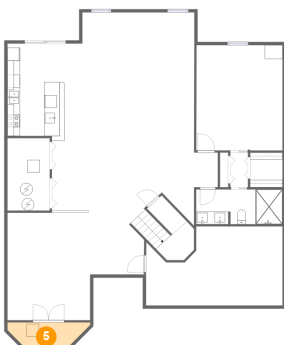
4 Floor 1 - Storage



Dimensions: 21'9" x 12'6"
Area: 234 sq. ft
Counted as Living Area: No

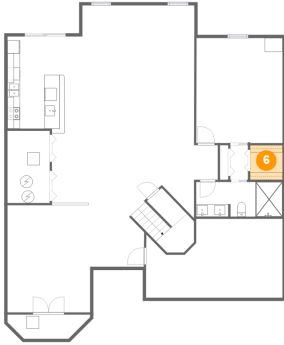
Heated: No
Finished: Yes
Enclosed: No
Contiguous: Yes
Permitted: Yes
Wet Space: No
Addition: No
Conversion: No

5 Floor 1 - Electrical Room



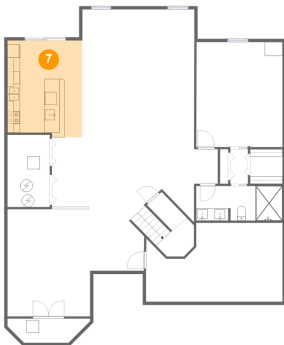
Dimensions: 13'2" x 3'10"
Area: 42 sq. ft
Counted as Living Area: No

Heated: No
Finished: No
Enclosed: Yes
Contiguous: Yes
Permitted: Yes
Wet Space: No
Addition: No
Conversion: No

**26 Donlavage Way, West Orange, Essex County,
New Jersey, United States, 07052****6 Floor 1 - W.i.c.**

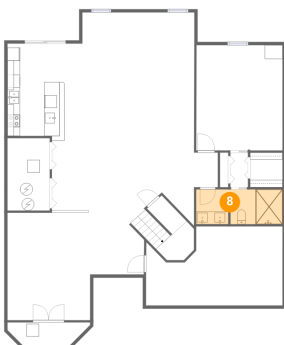
Dimensions: 5'2" x 5'6"
Area: 28 sq. ft
Counted as Living Area:
Yes

Heated: Yes
Finished: Yes
Enclosed: Yes
Contiguous:
Yes
Permitted: Yes
Wet Space: No
Addition: No
Conversion: No

7 Floor 1 - Kitchen

Dimensions: 11'10" x 15'5"
Area: 178 sq. ft
Counted as Living Area:
Yes

Heated: Yes
Finished: Yes
Enclosed: Yes
Contiguous:
Yes
Permitted: Yes
Wet Space: No
Addition: No
Conversion: No

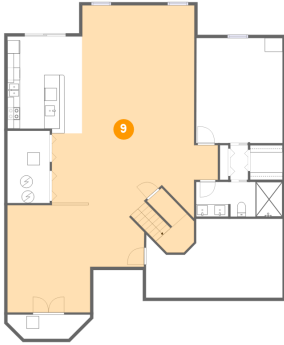
8 Floor 1 - Bath

Dimensions: 13'9" x 5'6"
Area: 75 sq. ft
Counted as Living Area:
Yes

Heated: Yes
Finished: Yes
Enclosed: Yes
Contiguous:
Yes
Permitted: Yes
Wet Space: Yes
Addition: No
Conversion: No

26 Donlavage Way, West Orange, Essex County, New Jersey, United States, 07052

9 Floor 1 - Recreation Room



Dimensions: 29'8" x 48'10"
Area: 998 sq. ft
Counted as Living Area:
Yes

Heated: Yes
Finished: Yes
Enclosed: Yes
Contiguous:
Yes
Permitted: Yes
Wet Space: No
Addition: No
Conversion: No

10 Floor 2 - Pantry



Dimensions: 5'7" x 4'4"
Area: 24 sq. ft
Counted as Living Area:
Yes

Heated: Yes
Finished: Yes
Enclosed: Yes
Contiguous:
Yes
Permitted: Yes
Wet Space: No
Addition: No
Conversion: No

11 Floor 2 - Kitchen



Dimensions: 16'2" x 15'7"
Area: 238 sq. ft
Counted as Living Area:
Yes

Heated: Yes
Finished: Yes
Enclosed: Yes
Contiguous:
Yes
Permitted: Yes
Wet Space: No
Addition: No
Conversion: No

26 Donlavage Way, West Orange, Essex County, New Jersey, United States, 07052

12 Floor 2 - W.i.c.



Dimensions: 5'0" x 4'4"
Area: 22 sq. ft
Counted as Living Area:
Yes

Heated: Yes
Finished: Yes
Enclosed: Yes
Contiguous:
Yes
Permitted: Yes
Wet Space: No
Addition: No
Conversion: No

13 Floor 2 - Laundry



Dimensions: 8'2" x 6'10"
Area: 56 sq. ft
Counted as Living Area:
Yes

Heated: Yes
Finished: Yes
Enclosed: Yes
Contiguous:
Yes
Permitted: Yes
Wet Space: No
Addition: No
Conversion: No

14 Floor 2 - W.i.c.



Dimensions: 9'11" x 10'8"
Area: 106 sq. ft
Counted as Living Area:
Yes

Heated: Yes
Finished: Yes
Enclosed: Yes
Contiguous:
Yes
Permitted: Yes
Wet Space: No
Addition: No
Conversion: No

26 Donlavage Way, West Orange, Essex County, New Jersey, United States, 07052

15 Floor 2 - Dining Room



Dimensions: 13'2" x 16'8"
Area: 210 sq. ft
Counted as Living Area:
Yes

Heated: Yes
Finished: Yes
Enclosed: Yes
Contiguous:
Yes
Permitted: Yes
Wet Space: No
Addition: No
Conversion: No

16 Floor 2 - Balcony



Dimensions: 11'7" x 11'1"
Area: 128 sq. ft
Counted as Living Area: No

Heated: No
Finished: Yes
Enclosed: No
Contiguous: Yes
Permitted: Yes
Wet Space: No
Addition: No
Conversion: No

17 Floor 2 - P/R



Dimensions: 5'1" x 5'3"
Area: 27 sq. ft
Counted as Living Area:
Yes

Heated: Yes
Finished: Yes
Enclosed: Yes
Contiguous:
Yes
Permitted: Yes
Wet Space: Yes
Addition: No
Conversion: No

26 Donlavage Way, West Orange, Essex County, New Jersey, United States, 07052

18 Floor 2 - Breakfast Nook



Dimensions: 11'11" x 10'10"
Area: 130 sq. ft
Counted as Living Area:
Yes

Heated: Yes
Finished: Yes
Enclosed: Yes
Contiguous:
Yes
Permitted: Yes
Wet Space: No
Addition: No
Conversion: No

19 Floor 2 - Primary Bedroom



Dimensions: 15'9" x 17'5"
Area: 225 sq. ft
Counted as Living Area:
Yes

Heated: Yes
Finished: Yes
Enclosed: Yes
Contiguous:
Yes
Permitted: Yes
Wet Space: No
Addition: No
Conversion: No

20 Floor 2 - Porch



Dimensions: 7'10" x 5'1"
Area: 41 sq. ft
Counted as Living Area: No

Heated: No
Finished: Yes
Enclosed: No
Contiguous: Yes
Permitted: Yes
Wet Space: No
Addition: No
Conversion: No

26 Donlavage Way, West Orange, Essex County, New Jersey, United States, 07052

21 Floor 2 - Foyer



Dimensions: 16'2" x 22'10"
Area: 291 sq. ft
Counted as Living Area:
Yes

Heated: Yes
Finished: Yes
Enclosed: Yes
Contiguous:
Yes
Permitted: Yes
Wet Space: No
Addition: No
Conversion: No

22 Floor 2 - Primary Bath



Dimensions: 14'1" x 14'0"
Area: 148 sq. ft
Counted as Living Area:
Yes

Heated: Yes
Finished: Yes
Enclosed: Yes
Contiguous:
Yes
Permitted: Yes
Wet Space: Yes
Addition: No
Conversion: No

23 Floor 2 - Garage



Dimensions: 21'9" x 23'10"
Area: 518 sq. ft
Counted as Living Area: No

Heated: No
Finished: No
Enclosed: Yes
Contiguous: Yes
Permitted: Yes
Wet Space: No
Addition: No
Conversion: No

26 Donlavage Way, West Orange, Essex County, New Jersey, United States, 07052

24 Floor 2 - Living Room



Dimensions: 17'10" x 19'10"
Area: 343 sq. ft
Counted as Living Area:
Yes

Heated: Yes
Finished: Yes
Enclosed: Yes
Contiguous:
Yes
Permitted: Yes
Wet Space: No
Addition: No
Conversion: No

25 Floor 2 - Wc



Dimensions: 3'6" x 9'7"
Area: 29 sq. ft
Counted as Living Area:
Yes

Heated: Yes
Finished: Yes
Enclosed: Yes
Contiguous:
Yes
Permitted: Yes
Wet Space: Yes
Addition: No
Conversion: No

26 Floor 3 - W.i.c.



Dimensions: 3'7" x 5'6"
Area: 20 sq. ft
Counted as Living Area:
Yes

Heated: Yes
Finished: Yes
Enclosed: Yes
Contiguous:
Yes
Permitted: Yes
Wet Space: No
Addition: No
Conversion: No

26 Donlavage Way, West Orange, Essex County, New Jersey, United States, 07052

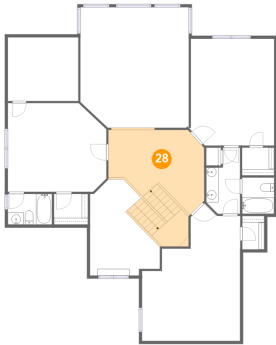
27 Floor 3 - Open To Below



Dimensions: 11'6" x 14'9"
Area: 133 sq. ft
Counted as Living Area: No

Heated: No
Finished: No
Enclosed: No
Contiguous: Yes
Permitted: No
Wet Space: No
Addition: No
Conversion: No

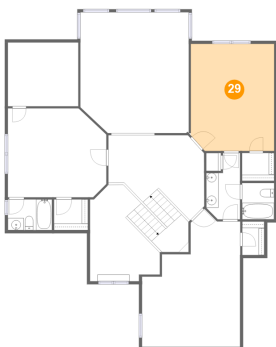
28 Floor 3 - Hall



Dimensions: 15'9" x 13'7"
Area: 231 sq. ft
Counted as Living Area:
Yes

Heated: Yes
Finished: Yes
Enclosed: Yes
Contiguous:
Yes
Permitted: Yes
Wet Space: No
Addition: No
Conversion: No

29 Floor 3 - Bedroom



Dimensions: 13'8" x 17'7"
Area: 238 sq. ft
Counted as Living Area:
Yes

Heated: Yes
Finished: Yes
Enclosed: Yes
Contiguous:
Yes
Permitted: Yes
Wet Space: No
Addition: No
Conversion: No

26 Donlavage Way, West Orange, Essex County, New Jersey, United States, 07052

30 Floor 3 - Bath



Dimensions: 7'3" x 5'1"
Area: 37 sq. ft
Counted as Living Area:
Yes

Heated: Yes
Finished: Yes
Enclosed: Yes
Contiguous:
Yes
Permitted: Yes
Wet Space: Yes
Addition: No
Conversion: No

31 Floor 3 - W.i.c.



Dimensions: 5'3" x 4'7"
Area: 24 sq. ft
Counted as Living Area:
Yes

Heated: Yes
Finished: Yes
Enclosed: Yes
Contiguous:
Yes
Permitted: Yes
Wet Space: No
Addition: No
Conversion: No

32 Floor 3 - W.i.c.



Dimensions: 5'7" x 5'1"
Area: 28 sq. ft
Counted as Living Area:
Yes

Heated: Yes
Finished: Yes
Enclosed: Yes
Contiguous:
Yes
Permitted: Yes
Wet Space: No
Addition: No
Conversion: No

26 Donlavage Way, West Orange, Essex County, New Jersey, United States, 07052

33 Floor 3 - Bedroom



Dimensions: 16'1" x 22'7"
Area: 281 sq. ft
Counted as Living Area:
Yes

Heated: Yes
Finished: Yes
Enclosed: Yes
Contiguous:
Yes
Permitted: Yes
Wet Space: No
Addition: No
Conversion: No

34 Floor 3 - Bath



Dimensions: 5'3" x 6'0"
Area: 31 sq. ft
Counted as Living Area:
Yes

Heated: Yes
Finished: Yes
Enclosed: Yes
Contiguous:
Yes
Permitted: Yes
Wet Space: Yes
Addition: No
Conversion: No

35 Floor 3 - Bath

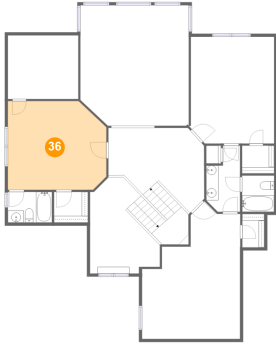


Dimensions: 5'7" x 10'11"
Area: 50 sq. ft
Counted as Living Area:
Yes

Heated: Yes
Finished: Yes
Enclosed: Yes
Contiguous:
Yes
Permitted: Yes
Wet Space: Yes
Addition: No
Conversion: No

26 Donlavage Way, West Orange, Essex County, New Jersey, United States, 07052

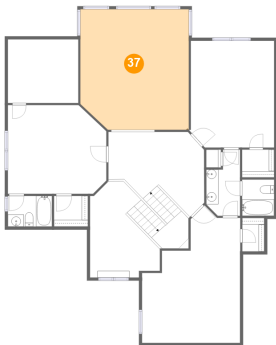
36 Floor 3 - Bedroom



Dimensions: 16'3" x 14'7"
Area: 224 sq. ft
Counted as Living Area:
Yes

Heated: Yes
Finished: Yes
Enclosed: Yes
Contiguous:
Yes
Permitted: Yes
Wet Space: No
Addition: No
Conversion: No

37 Floor 3 - Open To Below



Dimensions: 17'10" x 19'10"
Area: 344 sq. ft
Counted as Living Area: No

Heated: No
Finished: No
Enclosed: No
Contiguous: Yes
Permitted: No
Wet Space: No
Addition: No
Conversion: No

38 Floor 3 - Attic



Dimensions: 11'7" x 10'6"
Area: 60 sq. ft
Counted as Living Area: No

Heated: No
Finished: No
Enclosed: Yes
Contiguous: Yes
Permitted: Yes
Wet Space: No
Addition: No
Conversion: No