

# 2864 Cedar Street, Coverdale, Bethel Park, Allegheny County, Pennsylvania, United States,



## Property Summary

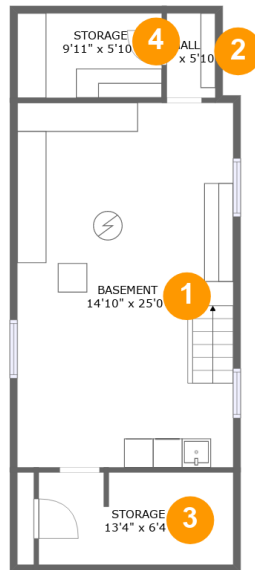
**0** garages    **2** bedrooms    **1** bathrooms    **0** half baths

**3** floors

**995** Gross Living Area sqft

**1,764** total sqft

**2864 Cedar Street, Coverdale, Bethel Park, Allegheny County, Pennsylvania, United States,**



**Room Dimensions**

**Floor 1**

**Total sqft: 608**

**Living area: 0**

#	Room name	Dimensions	Area (sqft)	Counted as Living Area
1	Basement	14'10" x 25'0"	371 sq. ft	No
2	Hall	3'4" x 5'10"	19 sq. ft	No
3	Storage	13'4" x 6'4"	84 sq. ft	No
4	Storage	9'11" x 5'10"	58 sq. ft	No

**2864 Cedar Street, Coverdale, Bethel Park,  
Allegheny County, Pennsylvania, United States,**



**Room Dimensions**

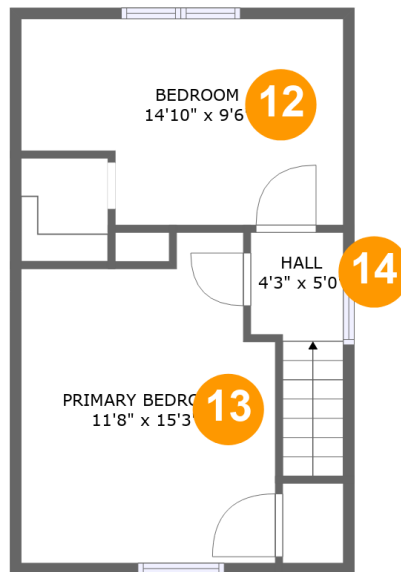
**Floor 2**

**Total sqft: 744**

**Living area: 583**

#	Room name	Dimensions	Area (sqft)	Counted as Living Area
5	Deck	13'2" x 9'5"	125 sq. ft	No
6	Entry	3'1" x 5'10"	18 sq. ft	Yes
7	Living Room	12'0" x 13'4"	196 sq. ft	Yes
8	Porch	6'0" x 3'5"	21 sq. ft	No
9	Bath	8'0" x 5'10"	46 sq. ft	Yes
10	Kitchen	14'10" x 11'4"	168 sq. ft	Yes
11	Foyer	10'11" x 6'4"	70 sq. ft	Yes

# 2864 Cedar Street, Coverdale, Bethel Park, Allegheny County, Pennsylvania, United States,



## Room Dimensions

**Floor 3****Total sqft: 412****Living area: 412**

#	Room name	Dimensions	Area (sqft)	Counted as Living Area
12	Bedroom	14'10" x 9'6"	126 sq. ft	Yes
13	Primary Bedroom	11'8" x 15'3"	159 sq. ft	Yes
14	Hall	4'3" x 5'0"	38 sq. ft	Yes

# 2864 Cedar Street, Coverdale, Bethel Park, Allegheny County, Pennsylvania, United States,

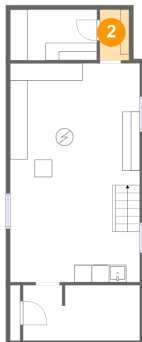
## 1 Floor 1 - Basement



Dimensions: 14'10" x 25'0"  
Area: 371 sq. ft  
Counted as Living Area: No

Heated: No  
Finished: No  
Enclosed: Yes  
Contiguous: Yes  
Permitted: Yes  
Wet Space: No  
Addition: No  
Conversion: No

## 2 Floor 1 - Hall



Dimensions: 3'4" x 5'10"  
Area: 19 sq. ft  
Counted as Living Area: No

Heated: Yes  
Finished: Yes  
Enclosed: Yes  
Contiguous: No  
Permitted: Yes  
Wet Space: No  
Addition: No  
Conversion: No

# 2864 Cedar Street, Coverdale, Bethel Park, Allegheny County, Pennsylvania, United States,

## 3 Floor 1 - Storage



Dimensions: 13'4" x 6'4"  
Area: 84 sq. ft  
Counted as Living Area: No

Heated: No  
Finished: No  
Enclosed: No  
Contiguous: Yes  
Permitted: Yes  
Wet Space: No  
Addition: No  
Conversion: No

## 4 Floor 1 - Storage



Dimensions: 9'11" x 5'10"  
Area: 58 sq. ft  
Counted as Living Area: No

Heated: No  
Finished: No  
Enclosed: No  
Contiguous: Yes  
Permitted: Yes  
Wet Space: No  
Addition: No  
Conversion: No

## 5 Floor 2 - Deck



Dimensions: 13'2" x 9'5"  
Area: 125 sq. ft  
Counted as Living Area: No

Heated: No  
Finished: Yes  
Enclosed: No  
Contiguous: Yes  
Permitted: Yes  
Wet Space: No  
Addition: No  
Conversion: No

# 2864 Cedar Street, Coverdale, Bethel Park, Allegheny County, Pennsylvania, United States,

## 6 Floor 2 - Entry



Dimensions: 3'1" x 5'10"  
Area: 18 sq. ft  
Counted as Living Area:  
Yes

Heated: Yes  
Finished: Yes  
Enclosed: Yes  
Contiguous:  
Yes  
Permitted: Yes  
Wet Space: No  
Addition: No  
Conversion: No

## 7 Floor 2 - Living Room



Dimensions: 12'0" x 13'4"  
Area: 196 sq. ft  
Counted as Living Area:  
Yes

Heated: Yes  
Finished: Yes  
Enclosed: Yes  
Contiguous:  
Yes  
Permitted: Yes  
Wet Space: No  
Addition: No  
Conversion: No

## 8 Floor 2 - Porch



Dimensions: 6'0" x 3'5"  
Area: 21 sq. ft  
Counted as Living Area: No

Heated: No  
Finished: Yes  
Enclosed: No  
Contiguous: Yes  
Permitted: Yes  
Wet Space: No  
Addition: No  
Conversion: No

# 2864 Cedar Street, Coverdale, Bethel Park, Allegheny County, Pennsylvania, United States,

## 9 Floor 2 - Bath



Dimensions: 8'0" x 5'10"  
Area: 46 sq. ft  
Counted as Living Area:  
Yes

Heated: Yes  
Finished: Yes  
Enclosed: Yes  
Contiguous:  
Yes  
Permitted: Yes  
Wet Space: Yes  
Addition: No  
Conversion: No

## 10 Floor 2 - Kitchen



Dimensions: 14'10" x 11'4"  
Area: 168 sq. ft  
Counted as Living Area:  
Yes

Heated: Yes  
Finished: Yes  
Enclosed: Yes  
Contiguous:  
Yes  
Permitted: Yes  
Wet Space: No  
Addition: No  
Conversion: No

## 11 Floor 2 - Foyer



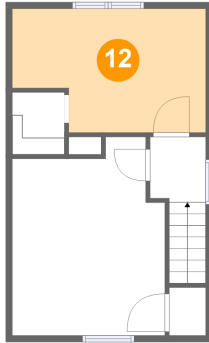
Dimensions: 10'11" x 6'4"  
Area: 70 sq. ft  
Counted as Living Area:  
Yes

Heated: Yes  
Finished: Yes  
Enclosed: Yes  
Contiguous:  
Yes  
Permitted: Yes  
Wet Space: No  
Addition: No  
Conversion: No



**2864 Cedar Street, Coverdale, Bethel Park,  
Allegheny County, Pennsylvania, United States,**

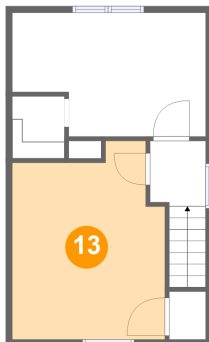
**12 Floor 3 - Bedroom**



Dimensions: 14'10" x 9'6"  
Area: 126 sq. ft  
Counted as Living Area:  
Yes

Heated: Yes  
Finished: Yes  
Enclosed: Yes  
Contiguous:  
Yes  
Permitted: Yes  
Wet Space: No  
Addition: No  
Conversion: No

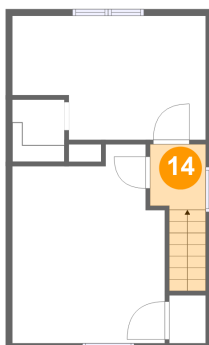
**13 Floor 3 - Primary Bedroom**



Dimensions: 11'8" x 15'3"  
Area: 159 sq. ft  
Counted as Living Area:  
Yes

Heated: Yes  
Finished: Yes  
Enclosed: Yes  
Contiguous:  
Yes  
Permitted: Yes  
Wet Space: No  
Addition: No  
Conversion: No

**14 Floor 3 - Hall**



Dimensions: 4'3" x 5'0"  
Area: 38 sq. ft  
Counted as Living Area:  
Yes

Heated: Yes  
Finished: Yes  
Enclosed: Yes  
Contiguous:  
Yes  
Permitted: Yes  
Wet Space: No  
Addition: No  
Conversion: No