

Home report


1145 Snow Street, Cummings, Castle Heights, Gloucester,
Ontario, Canada, K1J 7R5




Total Area: 4260 sq. ft
Below Ground: 1056 sq. ft, Floor 2: 1713 sq. ft, Floor 3: 1491 sq. ft
Excluded: Cold room 87 sq. ft, Storage 45 sq. ft, Hall 27 sq. ft, Basement 596 sq. ft, Garage 545 sq. ft, Fireplace 11 sq. ft, Open to below 69 sq. ft, Walls: 298 sq. ft

Property summary

**3** Floors

**4** Bedrooms

**3** Bathrooms

Home report

**1145 Snow Street, Cummings, Castle Heights, Gloucester,
Ontario, Canada, K1J 7R5**



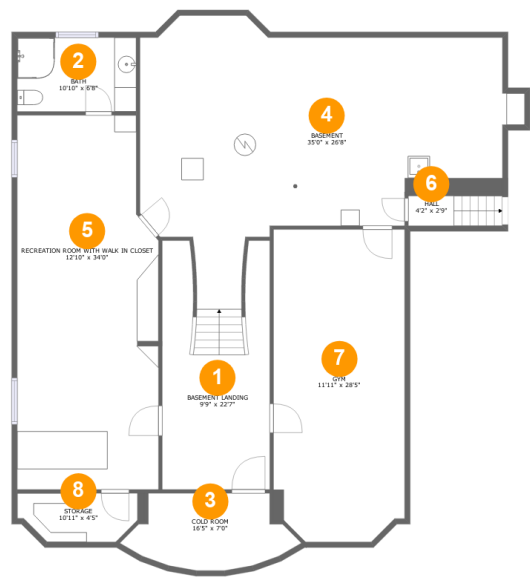
1
Half baths



1
Garages

Home report

1145 Snow Street, Cummings, Castle Heights, Gloucester,
Ontario, Canada, K1J 7R5



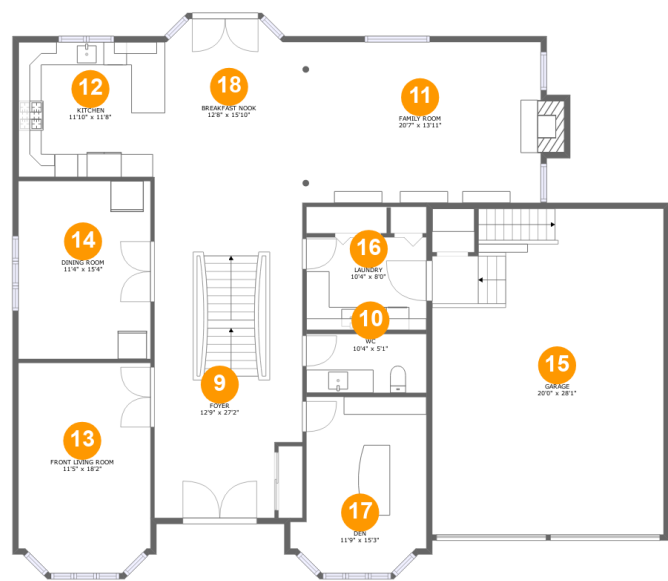
Room dimensions

Floor 1 Below ground Total:1056sqft Excluded: 755sqft

#		Max Dimensions	sqft	Included
1	Basement Landing	9'9" x 22'7"	190 sq. ft	Yes
2	Bath	10'10" x 6'8"	73 sq. ft	Yes
3	Cold Room	16'5" x 7'0"	85 sq. ft	No
4	Basement	35'0" x 26'8"	596 sq. ft	No
5	Recreation Room With Walk In Closet	12'10" x 34'0"	416 sq. ft	Yes
6	Hall	4'2" x 2'9"	23 sq. ft	No
7	Gym	11'11" x 28'5"	330 sq. ft	Yes
8	Storage	10'11" x 4'5"	45 sq. ft	No

Home report

1145 Snow Street, Cummings, Castle Heights, Gloucester,
Ontario, Canada, K1J 7R5



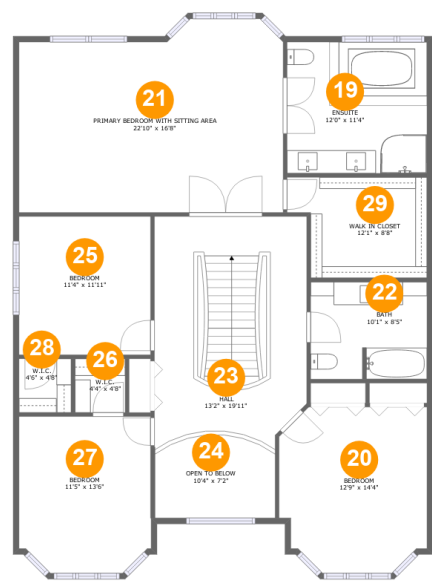
Room dimensions

Floor 2 Total:1713sqft Excluded: 556sqft

#		Max Dimensions	sqft	Included
9	Foyer	12'9" x 27'2"	332 sq. ft	Yes
10	WC	10'4" x 5'1"	53 sq. ft	Yes
11	Family Room	20'7" x 13'11"	294 sq. ft	Yes
12	Kitchen	11'10" x 11'8"	138 sq. ft	Yes
13	Front Living Room	11'5" x 18'2"	200 sq. ft	Yes
14	Dining Room	11'4" x 15'4"	175 sq. ft	Yes
15	Garage	20'0" x 28'1"	545 sq. ft	No
16	Laundry	10'4" x 8'0"	83 sq. ft	Yes
17	Den	11'9" x 15'3"	156 sq. ft	Yes
18	Breakfast Nook	12'8" x 15'10"	192 sq. ft	Yes

Home report

1145 Snow Street, Cummings, Castle Heights, Gloucester,
Ontario, Canada, K1J 7R5



Room dimensions

Floor 3 Total:1491sqft Excluded: 69sqft

#		Max Dimensions	sqft	Included
19	Ensuite	12'0" x 11'4"	137 sq. ft	Yes
20	Bedroom	12'9" x 14'4"	167 sq. ft	Yes
21	Primary Bedroom With Sitting Area	22'10" x 16'8"	351 sq. ft	Yes
22	Bath	10'1" x 8'5"	83 sq. ft	Yes
23	Hall	13'2" x 19'11"	250 sq. ft	Yes
24	Open To Below	10'4" x 7'2"	69 sq. ft	No
25	Bedroom	11'4" x 11'11"	136 sq. ft	Yes
26	W.I.C.	4'4" x 4'8"	20 sq. ft	Yes
27	Bedroom	11'5" x 13'6"	147 sq. ft	Yes
28	W.I.C.	4'6" x 4'8"	21 sq. ft	Yes

Home report

1145 Snow Street, Cummings, Castle Heights, Gloucester,
Ontario, Canada, K1J 7R5

#		Max Dimensions	sqft	Included
29	Walk In Closet	12'1" x 8'8"	93 sq. ft	Yes

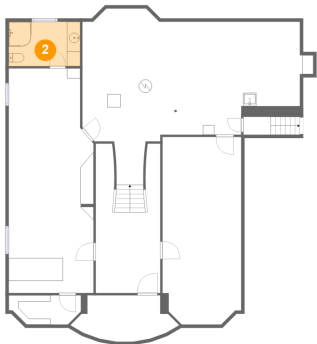
1 Floor 1 - Basement Landing



Max Dimensions: 9'9" x 22'7"
Calculated Area: 190 sq. ft
Included: Yes

Heated: Yes
Finished: Yes
Enclosed: Yes
Contiguous: Yes
Permitted: Yes
Wet space: No
Addition: No
Conversion: No

2 Floor 1 - Bath

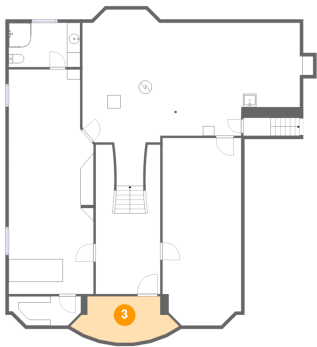


Max Dimensions: 10'10" x 6'8"
Calculated Area: 73 sq. ft
Included: Yes

Heated: Yes
Finished: Yes
Enclosed: Yes
Contiguous: Yes
Permitted: Yes
Wet space: Yes
Addition: No
Conversion: No

1145 Snow Street, Cummings, Castle Heights, Gloucester,
Ontario, Canada, K1J 7R5

3 Floor 1 - Cold Room



Max Dimensions: 16'5" x 7'0"
Calculated Area: 85 sq. ft
Included: No

Heated: No
Finished: No
Enclosed: No
Contiguous: Yes
Permitted: Yes
Wet space: No
Addition: No
Conversion: No

4 Floor 1 - Basement



Max Dimensions: 35'0" x 26'8"
Calculated Area: 596 sq. ft
Included: No

Heated: Yes
Finished: No
Enclosed: Yes
Contiguous: Yes
Permitted: Yes
Wet space: No
Addition: No
Conversion: No

5 Floor 1 - Recreation Room With Walk In Closet

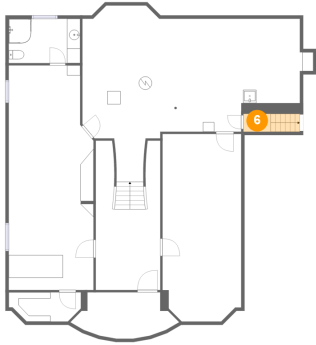


Max Dimensions: 12'10" x 34'0"
Calculated Area: 416 sq. ft
Included: Yes

Heated: Yes
Finished: Yes
Enclosed: Yes
Contiguous: Yes
Permitted: Yes
Wet space: No
Addition: No
Conversion: No

1145 Snow Street, Cummings, Castle Heights, Gloucester,
Ontario, Canada, K1J 7R5

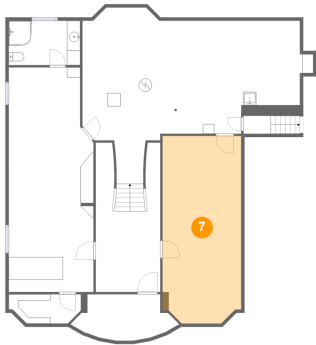
6 Floor 1 - Hall



Max Dimensions: 4'2" x 2'9"
Calculated Area: 23 sq. ft
Included: No

Heated: Yes
Finished: No
Enclosed: Yes
Contiguous: Yes
Permitted: Yes
Wet space: No
Addition: No
Conversion: No

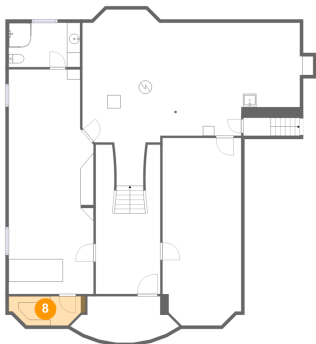
7 Floor 1 - Gym



Max Dimensions: 11'11" x 28'5"
Calculated Area: 330 sq. ft
Included: Yes

Heated: Yes
Finished: Yes
Enclosed: Yes
Contiguous: Yes
Permitted: Yes
Wet space: No
Addition: No
Conversion: No

8 Floor 1 - Storage

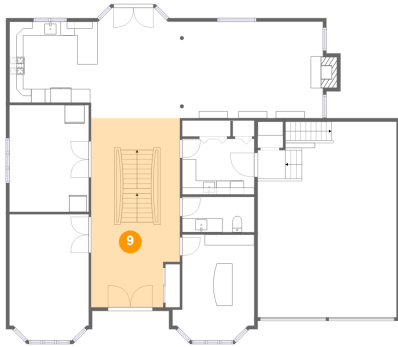


Max Dimensions: 10'11" x 4'5"
Calculated Area: 45 sq. ft
Included: No

Heated: No
Finished: No
Enclosed: No
Contiguous: Yes
Permitted: Yes
Wet space: No
Addition: No
Conversion: No

1145 Snow Street, Cummings, Castle Heights, Gloucester,
Ontario, Canada, K1J 7R5

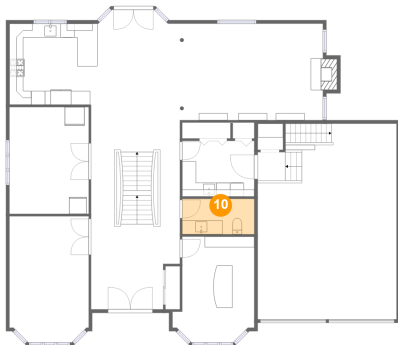
9 Floor 2 - Foyer



Max Dimensions: 12'9" x 27'2"
Calculated Area: 332 sq. ft
Included: Yes

Heated: Yes
Finished: Yes
Enclosed: Yes
Contiguous: Yes
Permitted: Yes
Wet space: No
Addition: No
Conversion: No

10 Floor 2 - WC



Max Dimensions: 10'4" x 5'1"
Calculated Area: 53 sq. ft
Included: Yes

Heated: Yes
Finished: Yes
Enclosed: Yes
Contiguous: Yes
Permitted: Yes
Wet space: Yes
Addition: No
Conversion: No

11 Floor 2 - Family Room



Max Dimensions: 20'7" x 13'11"
Calculated Area: 294 sq. ft
Included: Yes

Heated: Yes
Finished: Yes
Enclosed: Yes
Contiguous: Yes
Permitted: Yes
Wet space: No
Addition: No
Conversion: No

12 Floor 2 - Kitchen



Max Dimensions: 11'10" x 11'8"
Calculated Area: 138 sq. ft
Included: Yes

Heated: Yes
Finished: Yes
Enclosed: Yes
Contiguous: Yes
Permitted: Yes
Wet space: No
Addition: No
Conversion: No

13 Floor 2 - Front Living Room



Max Dimensions: 11'5" x 18'2"
Calculated Area: 200 sq. ft
Included: Yes

Heated: Yes
Finished: Yes
Enclosed: Yes
Contiguous: Yes
Permitted: Yes
Wet space: No
Addition: No
Conversion: No

14 Floor 2 - Dining Room



Max Dimensions: 11'4" x 15'4"
Calculated Area: 175 sq. ft
Included: Yes

Heated: Yes
Finished: Yes
Enclosed: Yes
Contiguous: Yes
Permitted: Yes
Wet space: No
Addition: No
Conversion: No

1145 Snow Street, Cummings, Castle Heights, Gloucester,
Ontario, Canada, K1J 7R5

15 Floor 2 - Garage



Max Dimensions: 20'0" x 28'1"
Calculated Area: 545 sq. ft
Included: No

Heated: No
Finished: No
Enclosed: Yes
Contiguous: Yes
Permitted: Yes
Wet space: No
Addition: No
Conversion: No

16 Floor 2 - Laundry



Max Dimensions: 10'4" x 8'0"
Calculated Area: 83 sq. ft
Included: Yes

Heated: Yes
Finished: Yes
Enclosed: Yes
Contiguous: Yes
Permitted: Yes
Wet space: No
Addition: No
Conversion: No

17 Floor 2 - Den



Max Dimensions: 11'9" x 15'3"
Calculated Area: 156 sq. ft
Included: Yes

Heated: Yes
Finished: Yes
Enclosed: Yes
Contiguous: Yes
Permitted: Yes
Wet space: No
Addition: No
Conversion: No

1145 Snow Street, Cummings, Castle Heights, Gloucester,
Ontario, Canada, K1J 7R5

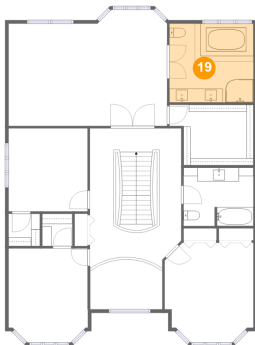
18 Floor 2 - Breakfast Nook



Max Dimensions: 12'8" x 15'10"
Calculated Area: 192 sq. ft
Included: Yes

Heated: Yes
Finished: Yes
Enclosed: Yes
Contiguous: Yes
Permitted: Yes
Wet space: No
Addition: No
Conversion: No

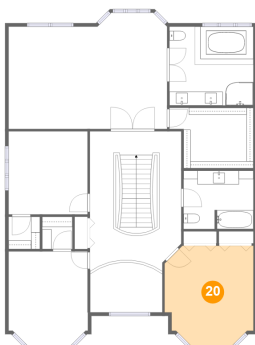
19 Floor 3 - Ensuite



Max Dimensions: 12'0" x 11'4"
Calculated Area: 137 sq. ft
Included: Yes

Heated: Yes
Finished: Yes
Enclosed: Yes
Contiguous: Yes
Permitted: Yes
Wet space: Yes
Addition: No
Conversion: No

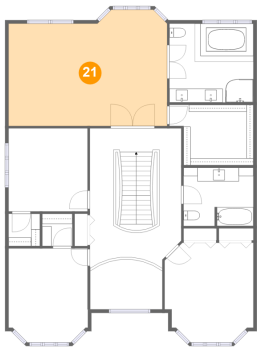
20 Floor 3 - Bedroom



Max Dimensions: 12'9" x 14'4"
Calculated Area: 167 sq. ft
Included: Yes

Heated: Yes
Finished: Yes
Enclosed: Yes
Contiguous: Yes
Permitted: Yes
Wet space: No
Addition: No
Conversion: No

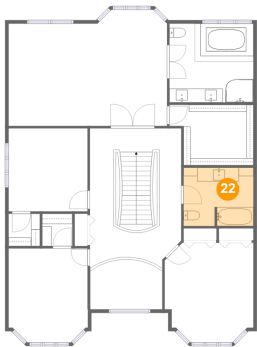
21 Floor 3 - Primary Bedroom With Sitting Area



Max Dimensions: 22'10" x 16'8"
Calculated Area: 351 sq. ft
Included: Yes

Heated: Yes
Finished: Yes
Enclosed: Yes
Contiguous: Yes
Permitted: Yes
Wet space: No
Addition: No
Conversion: No

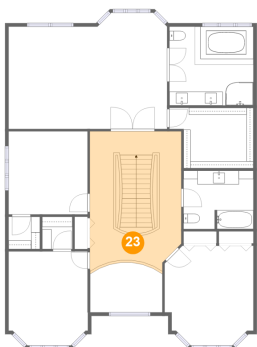
22 Floor 3 - Bath



Max Dimensions: 10'1" x 8'5"
Calculated Area: 83 sq. ft
Included: Yes

Heated: Yes
Finished: Yes
Enclosed: Yes
Contiguous: Yes
Permitted: Yes
Wet space: Yes
Addition: No
Conversion: No

23 Floor 3 - Hall

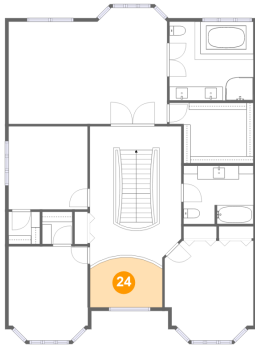


Max Dimensions: 13'2" x 19'11"
Calculated Area: 250 sq. ft
Included: Yes

Heated: Yes
Finished: Yes
Enclosed: Yes
Contiguous: Yes
Permitted: Yes
Wet space: No
Addition: No
Conversion: No

1145 Snow Street, Cummings, Castle Heights, Gloucester,
Ontario, Canada, K1J 7R5

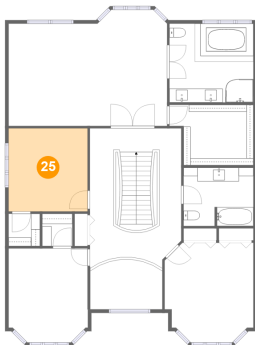
24 Floor 3 - Open To Below



Max Dimensions: 10'4" x 7'2"
Calculated Area: 69 sq. ft
Included: No

Heated: No
Finished: No
Enclosed: No
Contiguous: Yes
Permitted: No
Wet space: No
Addition: No
Conversion: No

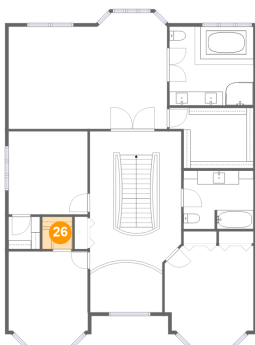
25 Floor 3 - Bedroom



Max Dimensions: 11'4" x 11'11"
Calculated Area: 136 sq. ft
Included: Yes

Heated: Yes
Finished: Yes
Enclosed: Yes
Contiguous: Yes
Permitted: Yes
Wet space: No
Addition: No
Conversion: No

26 Floor 3 - W.I.C.

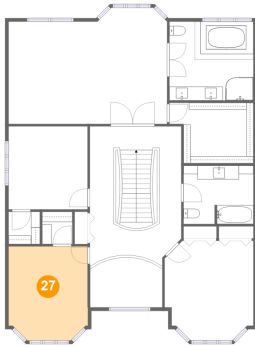


Max Dimensions: 4'4" x 4'8"
Calculated Area: 20 sq. ft
Included: Yes

Heated: Yes
Finished: Yes
Enclosed: Yes
Contiguous: Yes
Permitted: Yes
Wet space: No
Addition: No
Conversion: No

1145 Snow Street, Cummings, Castle Heights, Gloucester,
Ontario, Canada, K1J 7R5

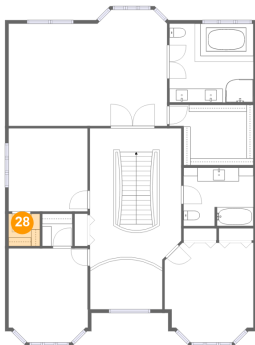
27 Floor 3 - Bedroom



Max Dimensions: 11'5" x 13'6"
Calculated Area: 147 sq. ft
Included: Yes

Heated: Yes
Finished: Yes
Enclosed: Yes
Contiguous: Yes
Permitted: Yes
Wet space: No
Addition: No
Conversion: No

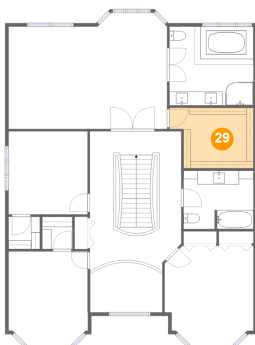
28 Floor 3 - W.I.C.



Max Dimensions: 4'6" x 4'8"
Calculated Area: 21 sq. ft
Included: Yes

Heated: Yes
Finished: Yes
Enclosed: Yes
Contiguous: Yes
Permitted: Yes
Wet space: No
Addition: No
Conversion: No

29 Floor 3 - Walk In Closet



Max Dimensions: 12'1" x 8'8"
Calculated Area: 93 sq. ft
Included: Yes

Heated: Yes
Finished: Yes
Enclosed: Yes
Contiguous: Yes
Permitted: Yes
Wet space: No
Addition: No
Conversion: No