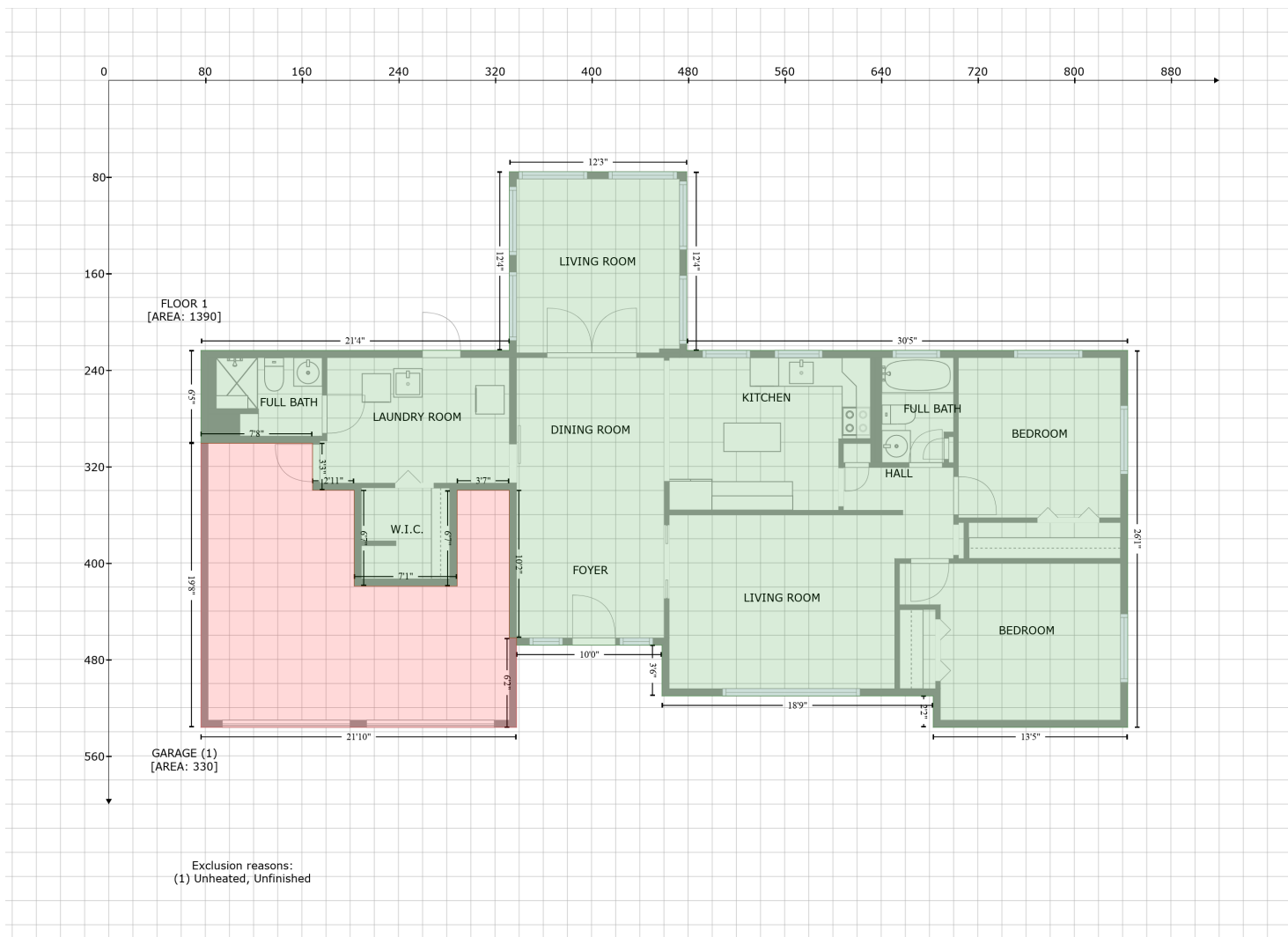


2010 Cleveland Street, Skycrest, Clearwater, Pinellas County, Florida, United States, 33765

Gross Living Area: 1390 sq. ft



Space	Area (sq. ft)	Calculation <small>Coordinate Polygon Area Algorithm using inches</small>
FLOOR 1 (Living area)	1390	$ \begin{aligned} & -((478.9 + 478.9) * (75.7 - 223.9) + (478.9 + 844.3) * (223.9 - 223.9) + (844.3 + 844.3) * (223.9 - \\ & 536.4) + (844.3 + 683.1) * (536.4 - 536.4) + (683.1 + 683.1) * (536.4 - 510.3) + (683.1 + 458.3) * \\ & (510.3 - 510.3) + (458.3 + 458.3) * (510.3 - 468.2) + (458.3 + 337.9) * (468.2 - 468.2) + (337.9 + \\ & 337.9) * (468.2 - 462.2) + (337.9 + 331.9) * (462.2 - 462.2) + (331.9 + 331.9) * (462.2 - 339.8) + \\ & (331.9 + 288.7) * (339.8 - 339.8) + (288.7 + 288.7) * (339.8 - 419.2) + (288.7 + 203.4) * (419.2 - \\ & 419.2) + (203.4 + 203.4) * (419.2 - 339.8) + (203.4 + 168.9) * (339.8 - 339.8) + (168.9 + 168.9) * \\ & (339.8 - 300.9) + (168.9 + 76.4) * (300.9 - 300.9) + (76.4 + 76.4) * (300.9 - 223.9) + (76.4 + \\ & 331.9) * (223.9 - 223.9) + (331.9 + 331.9) * (223.9 - 75.7) + (331.9 + 478.9) * (75.7 - 75.7)) * 0.5 * \\ & 0.00694 \end{aligned} $
GARAGE (Non-living area)	330	$ \begin{aligned} & -((168.9 + 168.9) * (300.9 - 339.8) + (168.9 + 203.4) * (339.8 - 339.8) + (203.4 + 203.4) * (339.8 - \\ & 419.2) + (203.4 + 288.7) * (419.2 - 419.2) + (288.7 + 288.7) * (419.2 - 339.8) + (288.7 + 331.9) * \\ & (339.8 - 339.8) + (331.9 + 331.9) * (339.8 - 462.2) + (331.9 + 337.9) * (462.2 - 462.2) + (337.9 + \\ & 337.9) * (462.2 - 536.4) + (337.9 + 76.4) * (536.4 - 536.4) + (76.4 + 76.4) * (536.4 - 300.9) + (76.4 \\ & + 168.9) * (300.9 - 300.9)) * 0.5 * 0.00694 \end{aligned} $