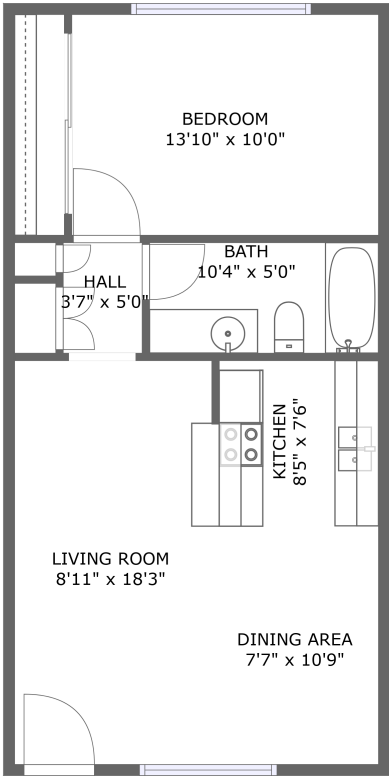


7075 Lanewood Ave,#34,Los Angeles,CA,US, #34



FLOOR 1

Total Area: 558 sq. ft

Floor 1: 558 sq. ft

Excluded: Walls: 0 sq. ft

Property summary

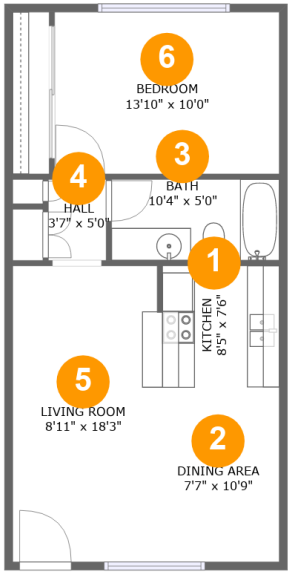
 **1** Floors

 **1** Bedrooms

 **1** Bathrooms

Home report

7075 Lanewood Ave,#34,Los Angeles,CA,US, #34

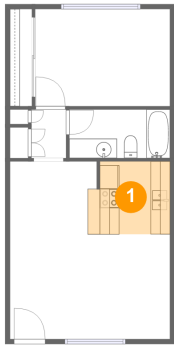


Room dimensions

Floor 1 Total:558sqft Excluded: 0sqft

#		Max Dimensions	sqft	Included
1	Kitchen	8'5" x 7'6"	60 sq. ft	Yes
2	Dining Area	7'7" x 10'9"	81 sq. ft	Yes
3	Bath	10'4" x 5'0"	52 sq. ft	Yes
4	Hall	3'7" x 5'0"	18 sq. ft	Yes
5	Living Room	8'11" x 18'3"	158 sq. ft	Yes
6	Bedroom	13'10" x 10'0"	138 sq. ft	Yes

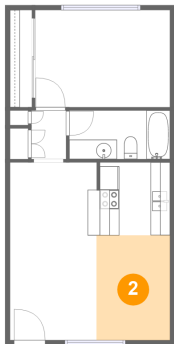
1 Floor 1 - Kitchen



Max Dimensions: 8'5" x 7'6"
Calculated Area: 60 sq. ft
Included: Yes

Heated: Yes
Finished: Yes
Enclosed: Yes
Contiguous: Yes
Permitted: Yes
Wet space: No
Addition: No
Conversion: No

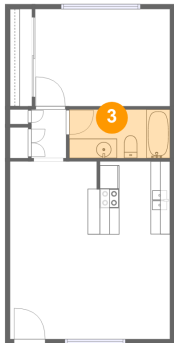
2 Floor 1 - Dining Area



Max Dimensions: 7'7" x 10'9"
Calculated Area: 81 sq. ft
Included: Yes

Heated: Yes
Finished: Yes
Enclosed: Yes
Contiguous: Yes
Permitted: Yes
Wet space: No
Addition: No
Conversion: No

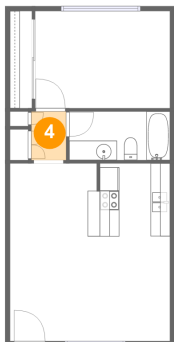
3 Floor 1 - Bath



Max Dimensions: 10'4" x 5'0"
Calculated Area: 52 sq. ft
Included: Yes

Heated: Yes
Finished: Yes
Enclosed: Yes
Contiguous: Yes
Permitted: Yes
Wet space: Yes
Addition: No
Conversion: No

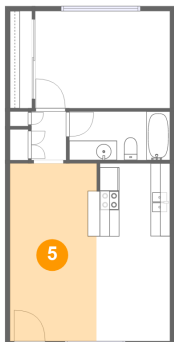
4 Floor 1 - Hall



Max Dimensions: 3'7" x 5'0"
Calculated Area: 18 sq. ft
Included: Yes

Heated: Yes
Finished: Yes
Enclosed: Yes
Contiguous: Yes
Permitted: Yes
Wet space: No
Addition: No
Conversion: No

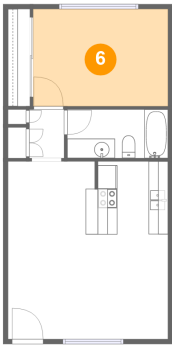
5 Floor 1 - Living Room



Max Dimensions: 8'11" x 18'3"
Calculated Area: 158 sq. ft
Included: Yes

Heated: Yes
Finished: Yes
Enclosed: Yes
Contiguous: Yes
Permitted: Yes
Wet space: No
Addition: No
Conversion: No

6 Floor 1 - Bedroom



Max Dimensions: 13'10" x 10'0"
Calculated Area: 138 sq. ft
Included: Yes

Heated: Yes
Finished: Yes
Enclosed: Yes
Contiguous: Yes
Permitted: Yes
Wet space: No
Addition: No
Conversion: No