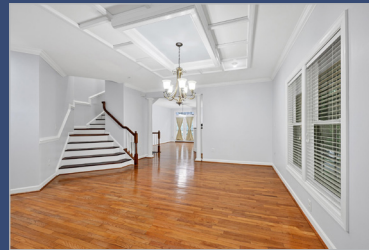




2200 Sussex Way

 3 Bed
  4 Bath
  2,423 Sq Ft
  0.07 acres

Woodstock, MD 21163



Welcome to this exceptional end-unit brick townhome nestled in the sought-after Waverly Woods community!

Step inside and be greeted by the elegance of hardwood flooring flowing seamlessly throughout all three levels. Offering three generously sized bedrooms and three full bathrooms, plus a convenient powder room on the main level, there's ample space for comfortable living. The finished walk-out basement expands your living space with a versatile room perfect for a fourth bedroom or home office, along with a spacious laundry room and easy access to the backyard. Enjoy seamless indoor-outdoor living with a large, freshly painted deck accessible from the main level. Recent upgrades include a roof that's just one year old, offering worry-free living. Experience the best of Waverly Woods!



Offered by:

Alvin Aluvathingal

Phone: (443) 980-9284

Email: alvin4mdhomes@gmail.com

Web: www.execuhome.com



8827 Columbia 100 Parkway, Suite 5
Columbia MD 21045

The information contained herein has been obtained through sources deemed reliable by the Realtor, but cannot be guaranteed for its accuracy. We recommend to the buyer that any information, which is of special interest, should be obtained through independent verification. ALL MEASUREMENTS ARE APPROXIMATE. Photography & Flyer produced by: Real Estate Exposures - www.realestateexposures.com - (717) 747-3235



