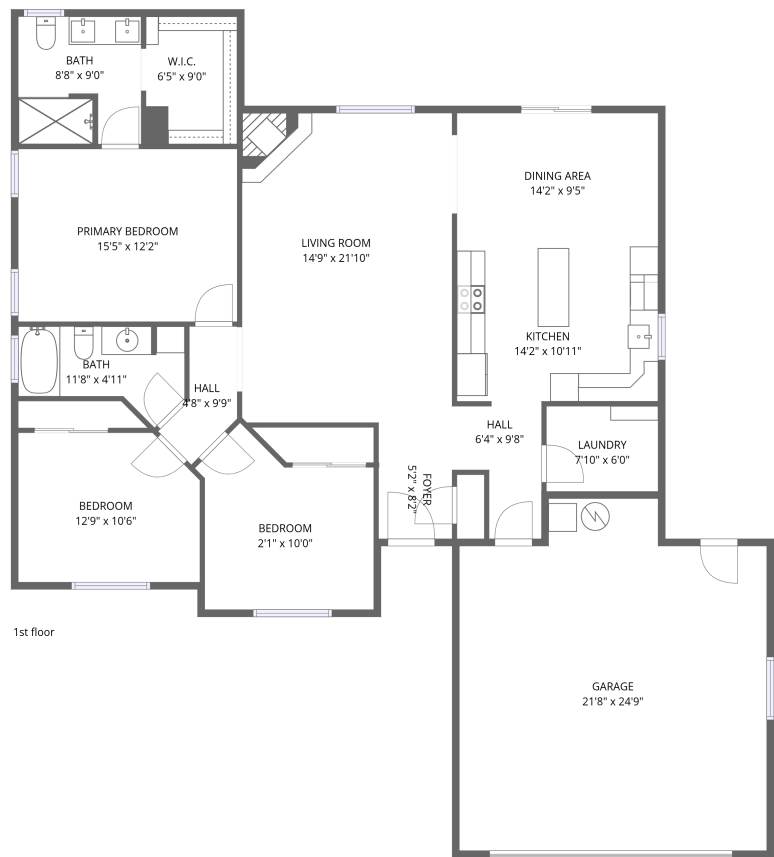


Home data report

1189 Trail Crest Rd,Twin Falls,ID,US




Total Area: 1527 sq. ft

1st Floor: 1527 sq. ft

Excluded: Garage 490 sq. ft, Walls: 126 sq. ft

Property summary

 1 Floors

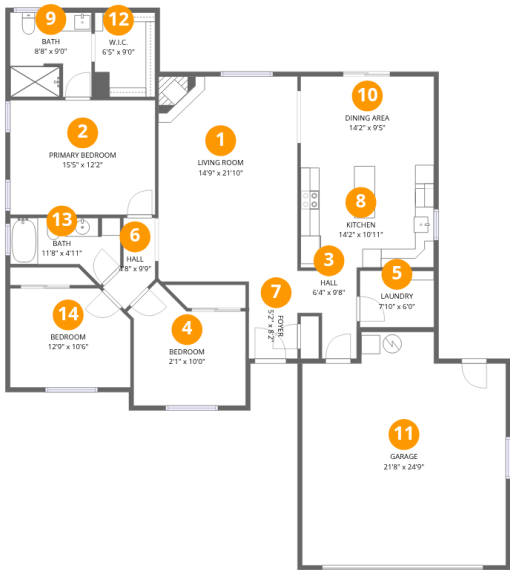
 3 Bedrooms

 2 Bathrooms

 1 Garages

Home data report

1189 Trail Crest Rd,Twin Falls,ID,US



Room dimensions

Floor 1 Total:1527sqft Excluded: 490sqft

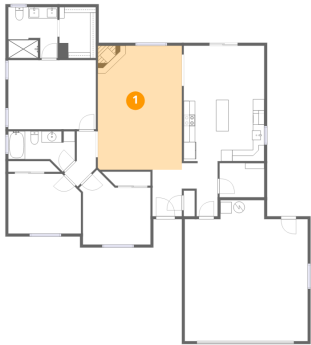
#		Dimensions	sqft	Counted as living area
1	Living Room	14'9" x 21'10"	322 sq. ft	Yes
2	Primary Bedroom	15'5" x 12'2"	187 sq. ft	Yes
3	Hall	6'4" x 9'8"	61 sq. ft	Yes
4	Bedroom	2'1" x 10'0"	21 sq. ft	Yes
5	Laundry	7'10" x 6'0"	47 sq. ft	Yes
6	Hall	4'8" x 9'9"	46 sq. ft	Yes
7	Foyer	5'2" x 8'2"	42 sq. ft	Yes
8	Kitchen	14'2" x 10'11"	155 sq. ft	Yes
9	Bath	8'8" x 9'0"	78 sq. ft	Yes
10	Dining Area	14'2" x 9'5"	133 sq. ft	Yes
11	Garage	21'8" x 24'9"	536 sq. ft	No

Home data report

1189 Trail Crest Rd,Twin Falls,ID,US

#		Dimensions	sqft	Counted as living area
12	W.I.C.	6'5" x 9'0"	57 sq. ft	Yes
13	Bath	11'8" x 4'11"	57 sq. ft	Yes
14	Bedroom	12'9" x 10'6"	135 sq. ft	Yes

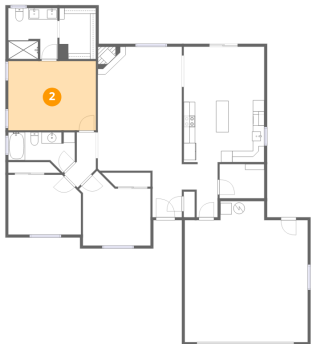
1 Floor 1 - Living Room



Dimensions: 14'9" x 21'10"
Area: 322 sq. ft
Counted as living area: Yes

Heated: Yes
Finished: Yes
Enclosed: Yes
Contiguous: Yes
Permitted: Yes
Wet space: No
Addition: No
Conversion: No

2 Floor 1 - Primary Bedroom



Dimensions: 15'5" x 12'2"
Area: 187 sq. ft
Counted as living area: Yes

Heated: Yes
Finished: Yes
Enclosed: Yes
Contiguous: Yes
Permitted: Yes
Wet space: No
Addition: No
Conversion: No

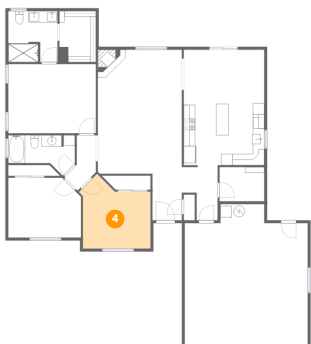
3 Floor 1 - Hall



Dimensions: 6'4" x 9'8"
Area: 61 sq. ft
Counted as living area: Yes

Heated: Yes
Finished: Yes
Enclosed: Yes
Contiguous: Yes
Permitted: Yes
Wet space: No
Addition: No
Conversion: No

4 Floor 1 - Bedroom



Dimensions: 2'1" x 10'0"
Area: 21 sq. ft
Counted as living area: Yes

Heated: Yes
Finished: Yes
Enclosed: Yes
Contiguous: Yes
Permitted: Yes
Wet space: No
Addition: No
Conversion: No

5 Floor 1 - Laundry



Dimensions: 7'10" x 6'0"
Area: 47 sq. ft
Counted as living area: Yes

Heated: Yes
Finished: Yes
Enclosed: Yes
Contiguous: Yes
Permitted: Yes
Wet space: No
Addition: No
Conversion: No

6 Floor 1 - Hall



Dimensions: 4'8" x 9'9"
Area: 46 sq. ft
Counted as living area: Yes

Heated: Yes
Finished: Yes
Enclosed: Yes
Contiguous: Yes
Permitted: Yes
Wet space: No
Addition: No
Conversion: No

7 Floor 1 - Foyer



Dimensions: 5'2" x 8'2"
Area: 42 sq. ft
Counted as living area: Yes

Heated: Yes
Finished: Yes
Enclosed: Yes
Contiguous: Yes
Permitted: Yes
Wet space: No
Addition: No
Conversion: No

8 Floor 1 - Kitchen



Dimensions: 14'2" x 10'11"
Area: 155 sq. ft
Counted as living area: Yes

Heated: Yes
Finished: Yes
Enclosed: Yes
Contiguous: Yes
Permitted: Yes
Wet space: No
Addition: No
Conversion: No

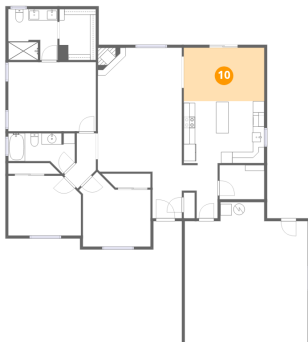
9 Floor 1 - Bath



Dimensions: 8'8" x 9'0"
Area: 78 sq. ft
Counted as living area: Yes

Heated: Yes
Finished: Yes
Enclosed: Yes
Contiguous: Yes
Permitted: Yes
Wet space: Yes
Addition: No
Conversion: No

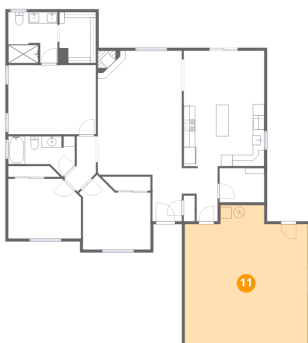
10 Floor 1 - Dining Area



Dimensions: 14'2" x 9'5"
Area: 133 sq. ft
Counted as living area: Yes

Heated: Yes
Finished: Yes
Enclosed: Yes
Contiguous: Yes
Permitted: Yes
Wet space: No
Addition: No
Conversion: No

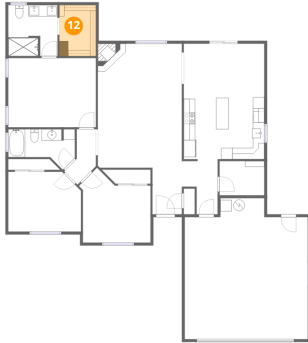
11 Floor 1 - Garage



Dimensions: 21'8" x 24'9"
Area: 536 sq. ft
Counted as living area: No

Heated: No
Finished: No
Enclosed: Yes
Contiguous: Yes
Permitted: Yes
Wet space: No
Addition: No
Conversion: No

12 Floor 1 - W.I.C.



Dimensions: 6'5" x 9'0"
Area: 57 sq. ft
Counted as living area: Yes

Heated: Yes
Finished: Yes
Enclosed: Yes
Contiguous: Yes
Permitted: Yes
Wet space: No
Addition: No
Conversion: No

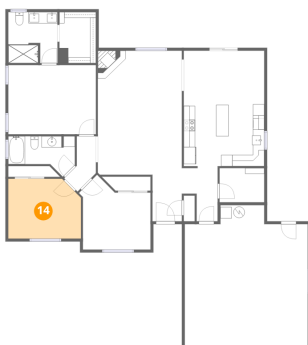
13 Floor 1 - Bath



Dimensions: 11'8" x 4'11"
Area: 57 sq. ft
Counted as living area: Yes

Heated: Yes
Finished: Yes
Enclosed: Yes
Contiguous: Yes
Permitted: Yes
Wet space: Yes
Addition: No
Conversion: No

14 Floor 1 - Bedroom



Dimensions: 12'9" x 10'6"
Area: 135 sq. ft
Counted as living area: Yes

Heated: Yes
Finished: Yes
Enclosed: Yes
Contiguous: Yes
Permitted: Yes
Wet space: No
Addition: No
Conversion: No