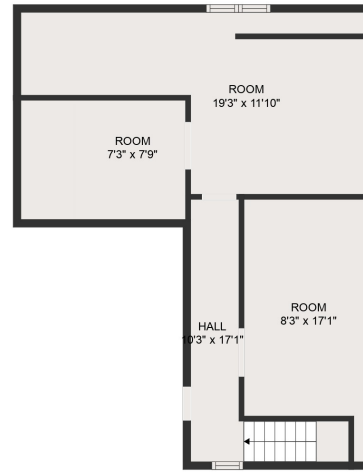
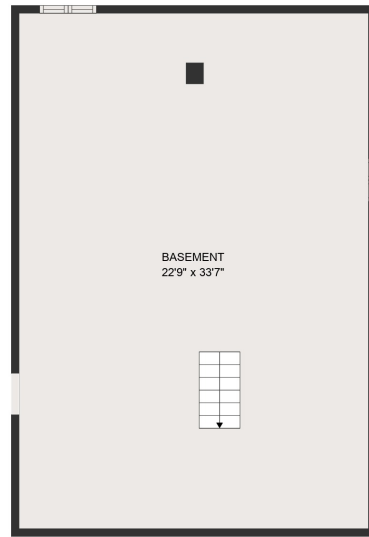


FLOOR 2



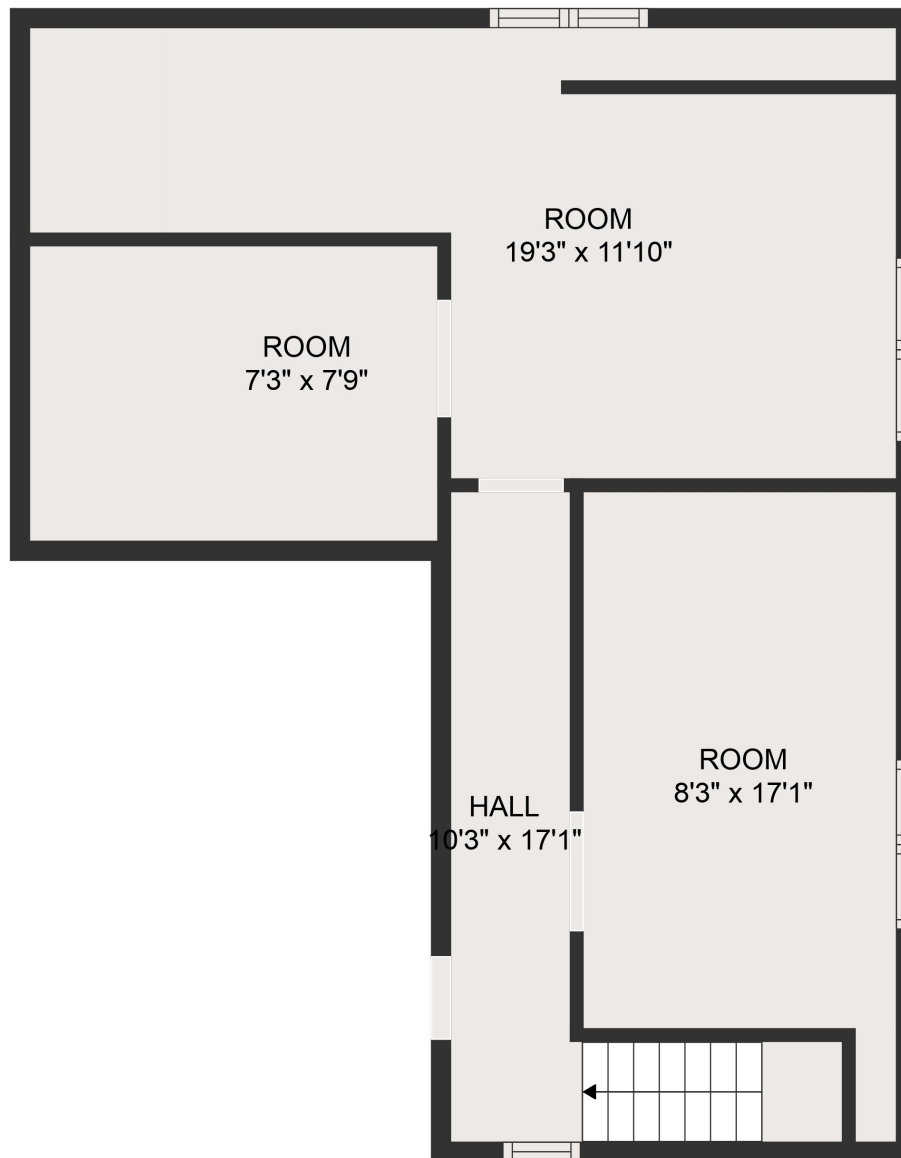
FLOOR 3



FLOOR 1

GROSS INTERNAL AREA
 Below Ground: 766 sq. ft, FLOOR 2: 667 sq. ft, FLOOR 3: 493 sq. ft
 TOTAL: 1926 sq. ft

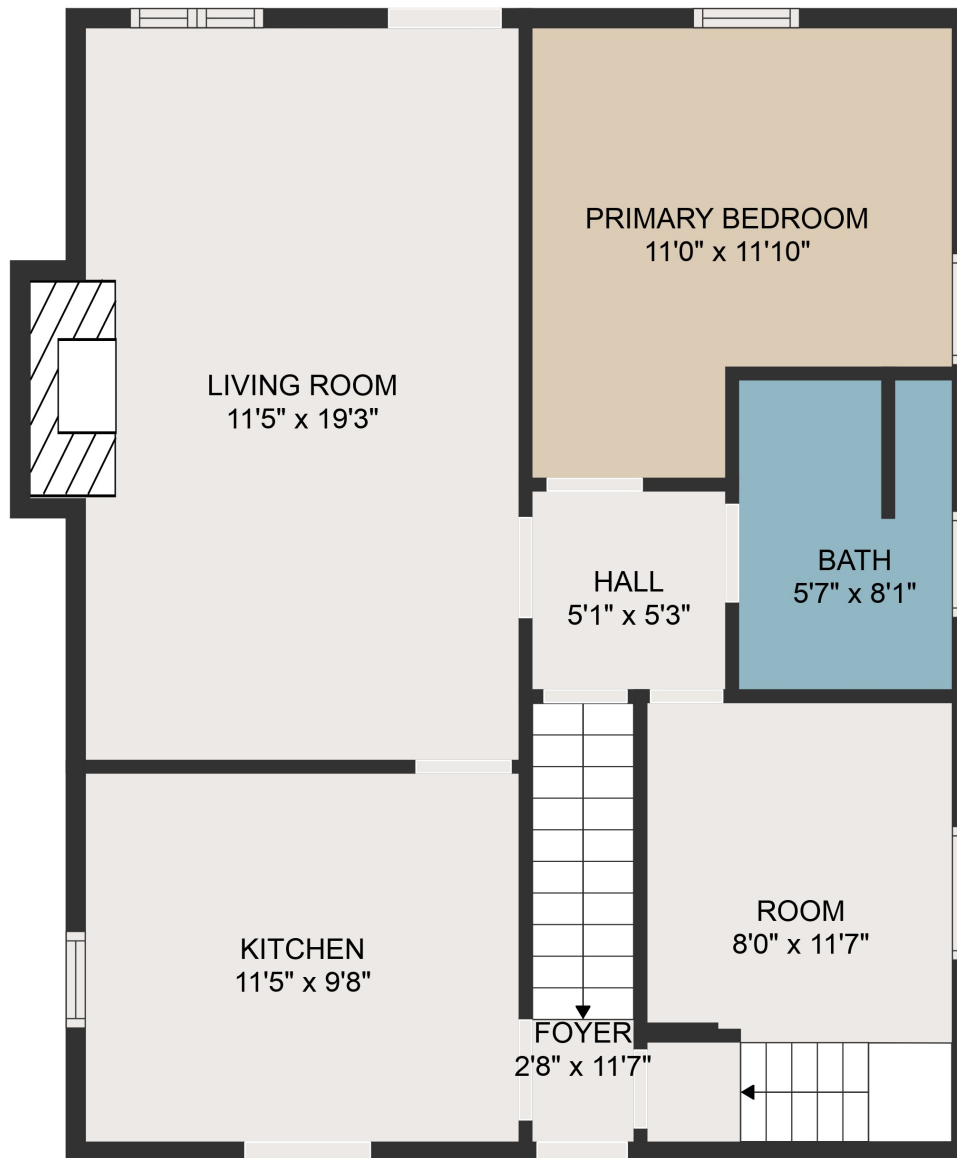
MEASUREMENTS ARE DEEMED HIGHLY RELIABLE BUT NOT GUARANTEED.



GROSS INTERNAL AREA

Below Ground: 766 sq. ft, FLOOR 2: 667 sq. ft, FLOOR 3: 493 sq. ft
TOTAL: 1926 sq. ft

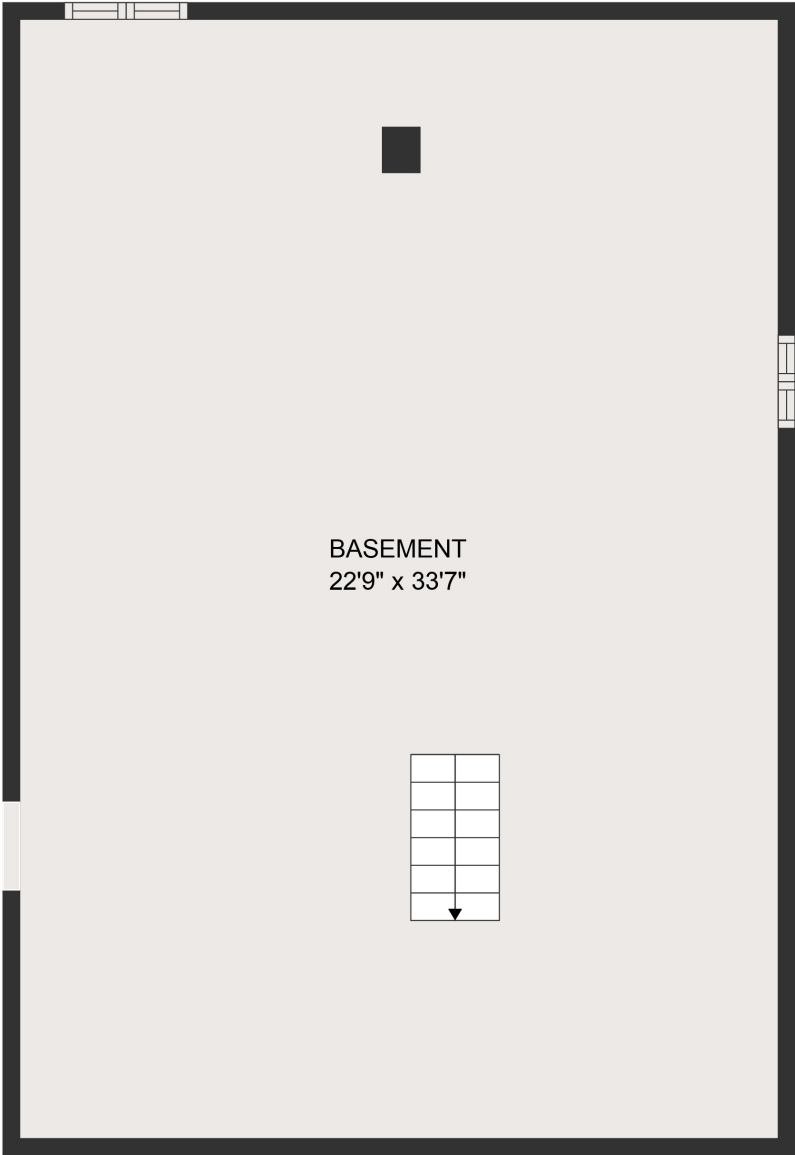
MEASUREMENTS ARE DEEMED HIGHLY RELIABLE BUT NOT GUARANTEED.



GROSS INTERNAL AREA

Below Ground: 766 sq. ft, FLOOR 2: 667 sq. ft, FLOOR 3: 493 sq. ft
TOTAL: 1926 sq. ft

MEASUREMENTS ARE DEEMED HIGHLY RELIABLE BUT NOT GUARANTEED.



BASEMENT
22'9" x 33'7"

GROSS INTERNAL AREA

Below Ground: 766 sq. ft, FLOOR 2: 667 sq. ft, FLOOR 3: 493 sq. ft

TOTAL: 1926 sq. ft

MEASUREMENTS ARE DEEMED HIGHLY RELIABLE BUT NOT GUARANTEED.