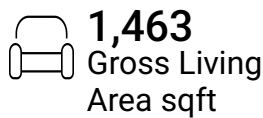
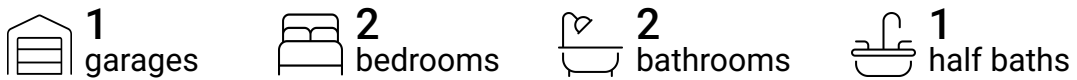


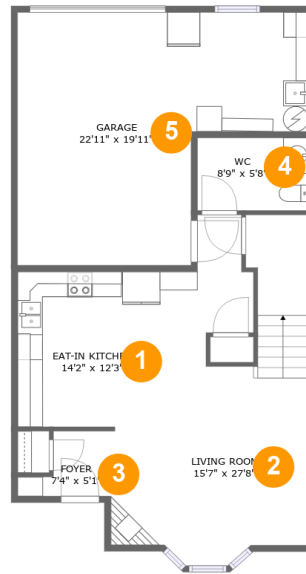
# 2025 Elm Street, Forest Grove, Washington County, Oregon, United States, 97116, 5C



## Property Summary



# 2025 Elm Street, Forest Grove, Washington County, Oregon, United States, 97116, 5C

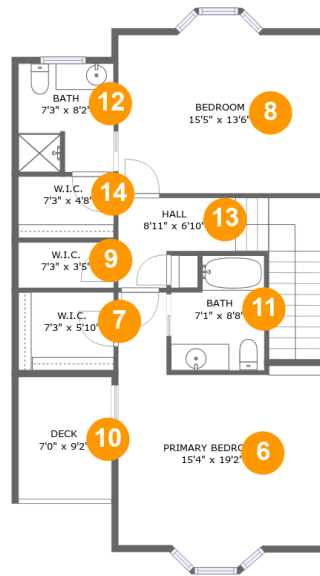


## Room Dimensions

**Floor 1****Total sqft: 999****Living area: 618**

#	Room name	Dimensions	Area (sqft)	Counted as Living Area
1	Eat-in Kitchen	14'2" x 12'3"	173 sq. ft	Yes
2	Living Room	15'7" x 27'8"	286 sq. ft	Yes
3	Foyer	7'4" x 5'1"	27 sq. ft	Yes
4	Wc	8'9" x 5'8"	50 sq. ft	Yes
5	Garage	22'11" x 19'11"	359 sq. ft	No

## 2025 Elm Street, Forest Grove, Washington County, Oregon, United States, 97116, 5C



### Room Dimensions

Floor 2

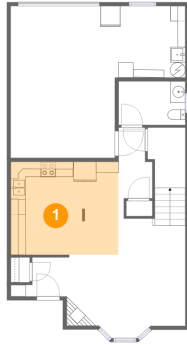
Total sqft: 910

Living area: 845

#	Room name	Dimensions	Area (sqft)	Counted as Living Area
6	Primary Bedroom	15'4" x 19'2"	233 sq. ft	Yes
7	W.i.c.	7'3" x 5'10"	43 sq. ft	Yes
8	Bedroom	15'5" x 13'6"	192 sq. ft	Yes
9	W.i.c.	7'3" x 3'5"	25 sq. ft	Yes
10	Deck	7'0" x 9'2"	65 sq. ft	No
11	Bath	7'1" x 8'8"	55 sq. ft	Yes
12	Bath	7'3" x 8'2"	58 sq. ft	Yes
13	Hall	8'11" x 6'10"	105 sq. ft	Yes
14	W.i.c.	7'3" x 4'8"	34 sq. ft	Yes

# 2025 Elm Street, Forest Grove, Washington County, Oregon, United States, 97116, 5C

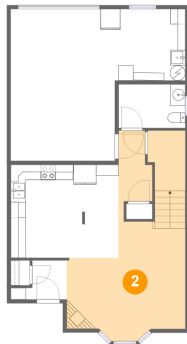
## 1 Floor 1 - Eat-in Kitchen



Dimensions: 14'2" x 12'3"  
Area: 173 sq. ft  
Counted as Living Area:  
Yes

Heated: Yes  
Finished: Yes  
Enclosed: Yes  
Contiguous:  
Yes  
Permitted: Yes  
Wet Space: No  
Addition: No  
Conversion: No

## 2 Floor 1 - Living Room

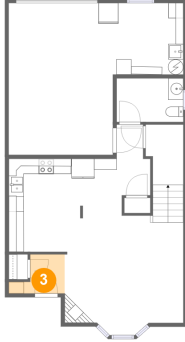


Dimensions: 15'7" x 27'8"  
Area: 286 sq. ft  
Counted as Living Area:  
Yes

Heated: Yes  
Finished: Yes  
Enclosed: Yes  
Contiguous:  
Yes  
Permitted: Yes  
Wet Space: No  
Addition: No  
Conversion: No

# 2025 Elm Street, Forest Grove, Washington County, Oregon, United States, 97116, 5C

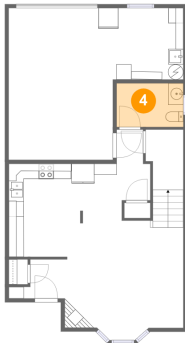
## 3 Floor 1 - Foyer



Dimensions: 7'4" x 5'1"  
Area: 27 sq. ft  
Counted as Living Area:  
Yes

Heated: Yes  
Finished: Yes  
Enclosed: Yes  
Contiguous:  
Yes  
Permitted: Yes  
Wet Space: No  
Addition: No  
Conversion: No

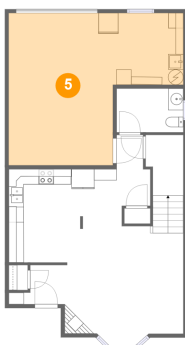
## 4 Floor 1 - Wc



Dimensions: 8'9" x 5'8"  
Area: 50 sq. ft  
Counted as Living Area:  
Yes

Heated: Yes  
Finished: Yes  
Enclosed: Yes  
Contiguous:  
Yes  
Permitted: Yes  
Wet Space: Yes  
Addition: No  
Conversion: No

## 5 Floor 1 - Garage

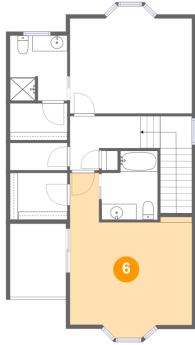


Dimensions: 22'11" x 19'11"  
Area: 359 sq. ft  
Counted as Living Area: No

Heated: No  
Finished: No  
Enclosed: Yes  
Contiguous: Yes  
Permitted: Yes  
Wet Space: No  
Addition: No  
Conversion: No

# 2025 Elm Street, Forest Grove, Washington County, Oregon, United States, 97116, 5C

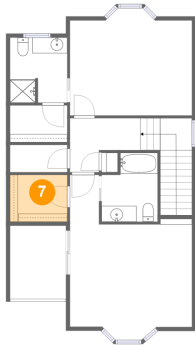
## 6 Floor 2 - Primary Bedroom



Dimensions: 15'4" x 19'2"  
Area: 233 sq. ft  
Counted as Living Area:  
Yes

Heated: Yes  
Finished: Yes  
Enclosed: Yes  
Contiguous:  
Yes  
Permitted: Yes  
Wet Space: No  
Addition: No  
Conversion: No

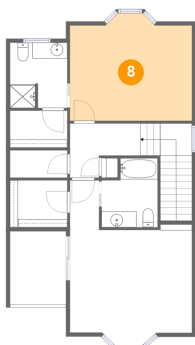
## 7 Floor 2 - W.i.c.



Dimensions: 7'3" x 5'10"  
Area: 43 sq. ft  
Counted as Living Area:  
Yes

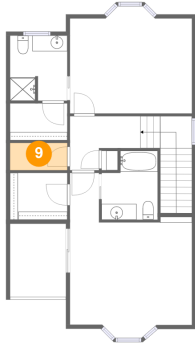
Heated: Yes  
Finished: Yes  
Enclosed: Yes  
Contiguous:  
Yes  
Permitted: Yes  
Wet Space: No  
Addition: No  
Conversion: No

## 8 Floor 2 - Bedroom



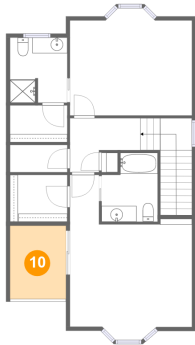
Dimensions: 15'5" x 13'6"  
Area: 192 sq. ft  
Counted as Living Area:  
Yes

Heated: Yes  
Finished: Yes  
Enclosed: Yes  
Contiguous:  
Yes  
Permitted: Yes  
Wet Space: No  
Addition: No  
Conversion: No

**2025 Elm Street, Forest Grove, Washington  
County, Oregon, United States, 97116, 5C****9 Floor 2 - W.i.c.**

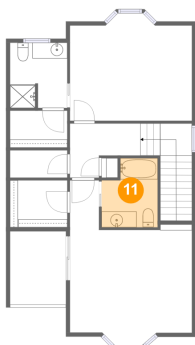
Dimensions: 7'3" x 3'5"  
Area: 25 sq. ft  
Counted as Living Area:  
Yes

Heated: Yes  
Finished: Yes  
Enclosed: Yes  
Contiguous:  
Yes  
Permitted: Yes  
Wet Space: No  
Addition: No  
Conversion: No

**10 Floor 2 - Deck**

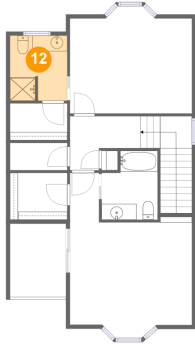
Dimensions: 7'0" x 9'2"  
Area: 65 sq. ft  
Counted as Living Area: No

Heated: No  
Finished: Yes  
Enclosed: No  
Contiguous: Yes  
Permitted: Yes  
Wet Space: No  
Addition: No  
Conversion: No

**11 Floor 2 - Bath**

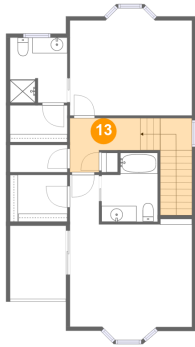
Dimensions: 7'1" x 8'8"  
Area: 55 sq. ft  
Counted as Living Area:  
Yes

Heated: Yes  
Finished: Yes  
Enclosed: Yes  
Contiguous:  
Yes  
Permitted: Yes  
Wet Space: Yes  
Addition: No  
Conversion: No

**2025 Elm Street, Forest Grove, Washington  
County, Oregon, United States, 97116, 5C****12 Floor 2 - Bath**

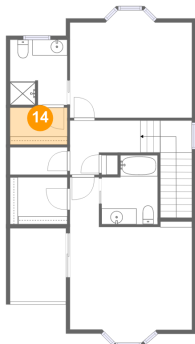
Dimensions: 7'3" x 8'2"  
Area: 58 sq. ft  
Counted as Living Area:  
Yes

Heated: Yes  
Finished: Yes  
Enclosed: Yes  
Contiguous:  
Yes  
Permitted: Yes  
Wet Space: Yes  
Addition: No  
Conversion: No

**13 Floor 2 - Hall**

Dimensions: 8'11" x 6'10"  
Area: 105 sq. ft  
Counted as Living Area:  
Yes

Heated: Yes  
Finished: Yes  
Enclosed: Yes  
Contiguous:  
Yes  
Permitted: Yes  
Wet Space: No  
Addition: No  
Conversion: No

**14 Floor 2 - W.i.c.**

Dimensions: 7'3" x 4'8"  
Area: 34 sq. ft  
Counted as Living Area:  
Yes

Heated: Yes  
Finished: Yes  
Enclosed: Yes  
Contiguous:  
Yes  
Permitted: Yes  
Wet Space: No  
Addition: No  
Conversion: No