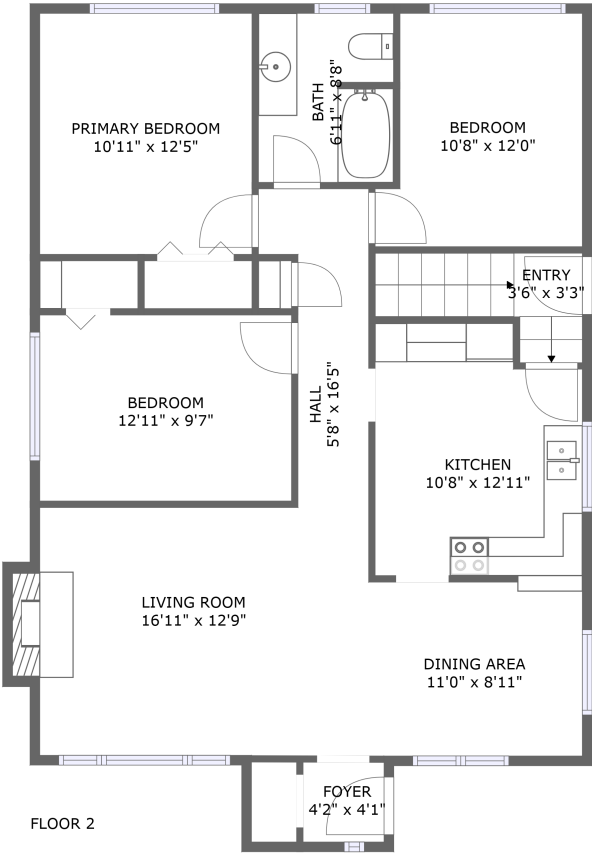
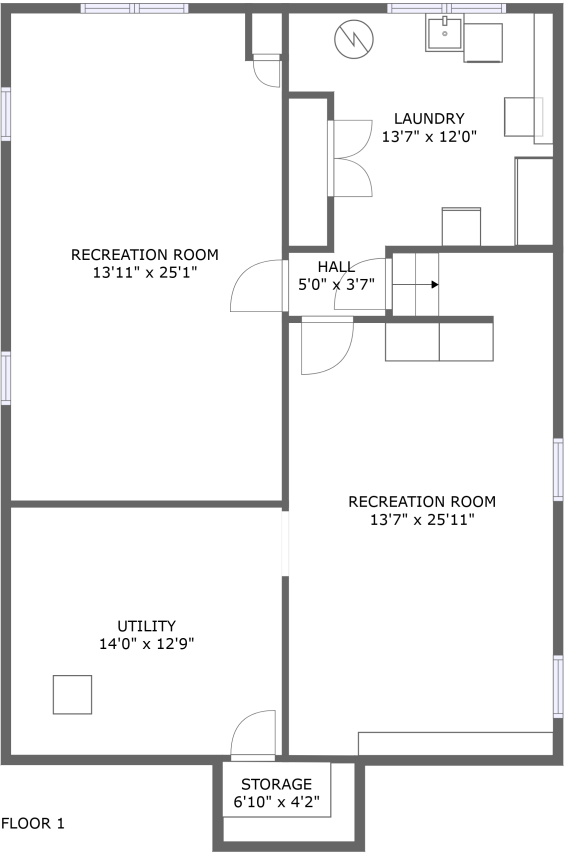



Home report


980 Oriole Dr,Peterborough,ON,CA




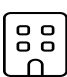
Property summary


 **0** Garages


 **3** Bedrooms

 **1** Bathrooms

 **0** Half baths

 **2** Floors

 **2,299** Gross living area sqft

 **2,344** Total sqft

Home report

980 Oriole Dr,Peterborough,ON,CA



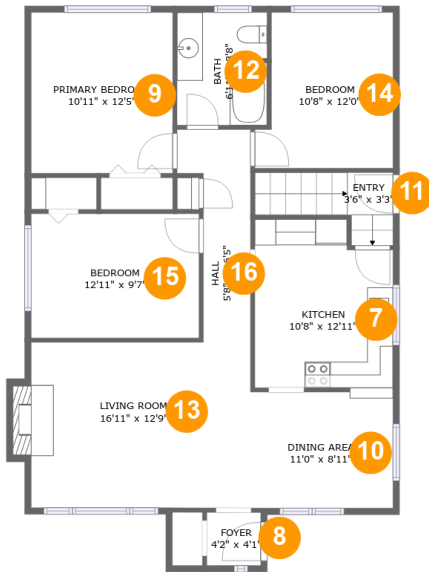
Room dimensions

Floor 1 Total sqft: 1167 Living area: 1131

#		Dimensions	sqft	Counted as living area
1	Hall	5'0" x 3'7"	17 sq. ft	Yes
2	Laundry	13'7" x 12'0"	145 sq. ft	Yes
3	Utility	14'0" x 12'9"	178 sq. ft	Yes
4	Recreation Room	13'11" x 25'1"	346 sq. ft	Yes
5	Recreation Room	13'7" x 25'11"	324 sq. ft	Yes
6	Storage	6'10" x 4'2"	28 sq. ft	No

Home report

980 Oriole Dr,Peterborough,ON,CA

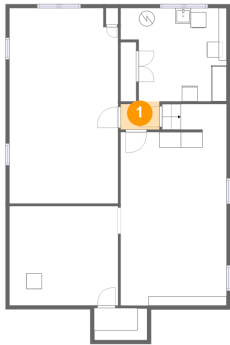


Room dimensions

Floor 2 Total sqft: 1177 Living area: 1168

#		Dimensions	sqft	Counted as living area
7	Kitchen	10'8" x 12'11"	130 sq. ft	Yes
8	Foyer	4'2" x 4'1"	17 sq. ft	Yes
9	Primary Bedroom	10'11" x 12'5"	135 sq. ft	Yes
10	Dining Area	11'0" x 8'11"	100 sq. ft	Yes
11	Entry	3'6" x 3'3"	43 sq. ft	Yes
12	Bath	6'11" x 8'8"	59 sq. ft	Yes
13	Living Room	16'11" x 12'9"	224 sq. ft	Yes
14	Bedroom	10'8" x 12'0"	116 sq. ft	Yes
15	Bedroom	12'11" x 9'7"	124 sq. ft	Yes
16	Hall	5'8" x 16'5"	67 sq. ft	Yes

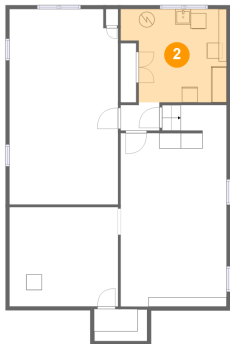
1 Floor 1 - Hall



Dimensions: 5'0" x 3'7"
Area: 17 sq. ft
Counted as living area: Yes

Heated: Yes
Finished: Yes
Enclosed: Yes
Contiguous: Yes
Permitted: Yes
Wet space: No
Addition: No
Conversion: No

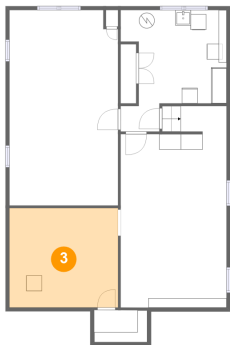
2 Floor 1 - Laundry



Dimensions: 13'7" x 12'0"
Area: 145 sq. ft
Counted as living area: Yes

Heated: Yes
Finished: Yes
Enclosed: Yes
Contiguous: Yes
Permitted: Yes
Wet space: No
Addition: No
Conversion: No

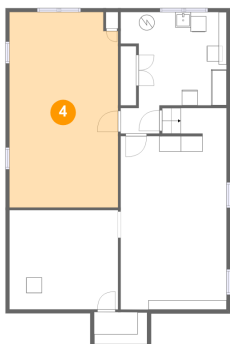
3 Floor 1 - Utility



Dimensions: 14'0" x 12'9"
Area: 178 sq. ft
Counted as living area: Yes

Heated: Yes
Finished: Yes
Enclosed: Yes
Contiguous: Yes
Permitted: Yes
Wet space: No
Addition: No
Conversion: No

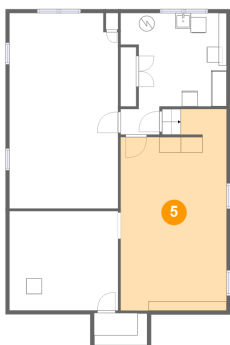
4 Floor 1 - Recreation Room



Dimensions: 13'11" x 25'1"
Area: 346 sq. ft
Counted as living area: Yes

Heated: Yes
Finished: Yes
Enclosed: Yes
Contiguous: Yes
Permitted: Yes
Wet space: No
Addition: No
Conversion: No

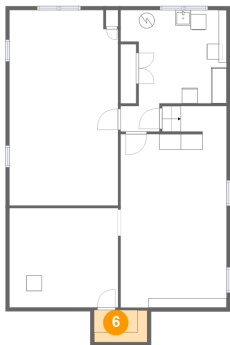
5 Floor 1 - Recreation Room



Dimensions: 13'7" x 25'11"
Area: 324 sq. ft
Counted as living area: Yes

Heated: Yes
Finished: Yes
Enclosed: Yes
Contiguous: Yes
Permitted: Yes
Wet space: No
Addition: No
Conversion: No

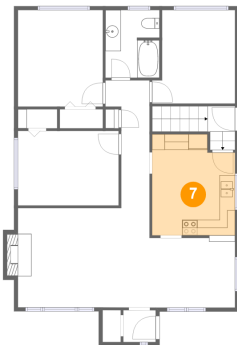
6 Floor 1 - Storage



Dimensions: 6'10" x 4'2"
Area: 28 sq. ft
Counted as living area: No

Heated: No
Finished: No
Enclosed: No
Contiguous: Yes
Permitted: Yes
Wet space: No
Addition: No
Conversion: No

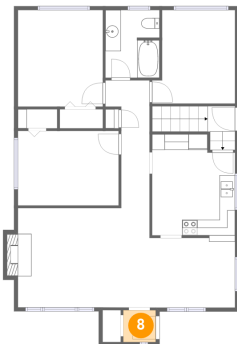
7 Floor 2 - Kitchen



Dimensions: 10'8" x 12'11"
Area: 130 sq. ft
Counted as living area: Yes

Heated: Yes
Finished: Yes
Enclosed: Yes
Contiguous: Yes
Permitted: Yes
Wet space: No
Addition: No
Conversion: No

8 Floor 2 - Foyer



Dimensions: 4'2" x 4'1"
Area: 17 sq. ft
Counted as living area: Yes

Heated: Yes
Finished: Yes
Enclosed: Yes
Contiguous: Yes
Permitted: Yes
Wet space: No
Addition: No
Conversion: No

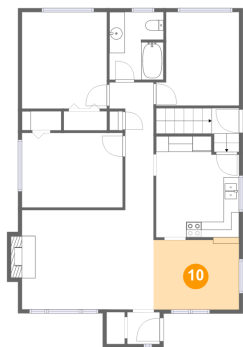
9 Floor 2 - Primary Bedroom



Dimensions: 10'11" x 12'5"
Area: 135 sq. ft
Counted as living area: Yes

Heated: Yes
Finished: Yes
Enclosed: Yes
Contiguous: Yes
Permitted: Yes
Wet space: No
Addition: No
Conversion: No

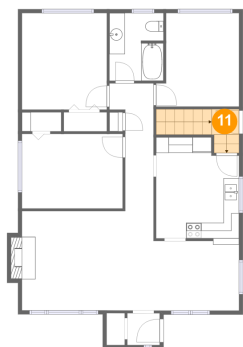
10 Floor 2 - Dining Area



Dimensions: 11'0" x 8'11"
Area: 100 sq. ft
Counted as living area: Yes

Heated: Yes
Finished: Yes
Enclosed: Yes
Contiguous: Yes
Permitted: Yes
Wet space: No
Addition: No
Conversion: No

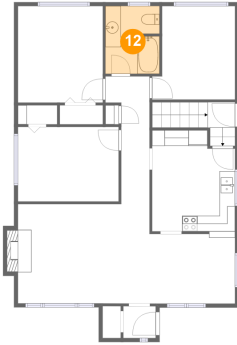
11 Floor 2 - Entry



Dimensions: 3'6" x 3'3"
Area: 43 sq. ft
Counted as living area: Yes

Heated: Yes
Finished: Yes
Enclosed: Yes
Contiguous: Yes
Permitted: Yes
Wet space: No
Addition: No
Conversion: No

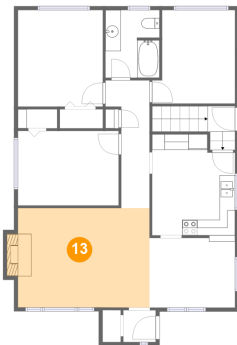
12 Floor 2 - Bath



Dimensions: 6'11" x 8'8"
Area: 59 sq. ft
Counted as living area: Yes

Heated: Yes
Finished: Yes
Enclosed: Yes
Contiguous: Yes
Permitted: Yes
Wet space: Yes
Addition: No
Conversion: No

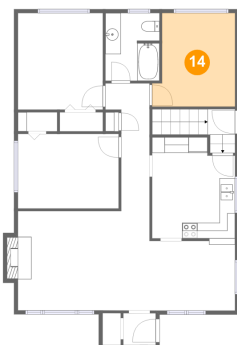
13 Floor 2 - Living Room



Dimensions: 16'11" x 12'9"
Area: 224 sq. ft
Counted as living area: Yes

Heated: Yes
Finished: Yes
Enclosed: Yes
Contiguous: Yes
Permitted: Yes
Wet space: No
Addition: No
Conversion: No

14 Floor 2 - Bedroom



Dimensions: 10'8" x 12'0"
Area: 116 sq. ft
Counted as living area: Yes

Heated: Yes
Finished: Yes
Enclosed: Yes
Contiguous: Yes
Permitted: Yes
Wet space: No
Addition: No
Conversion: No

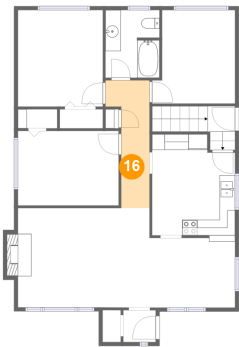
15 Floor 2 - Bedroom



Dimensions: 12'11" x 9'7"
Area: 124 sq. ft
Counted as living area: Yes

Heated: Yes
Finished: Yes
Enclosed: Yes
Contiguous: Yes
Permitted: Yes
Wet space: No
Addition: No
Conversion: No

16 Floor 2 - Hall



Dimensions: 5'8" x 16'5"
Area: 67 sq. ft
Counted as living area: Yes

Heated: Yes
Finished: Yes
Enclosed: Yes
Contiguous: Yes
Permitted: Yes
Wet space: No
Addition: No
Conversion: No