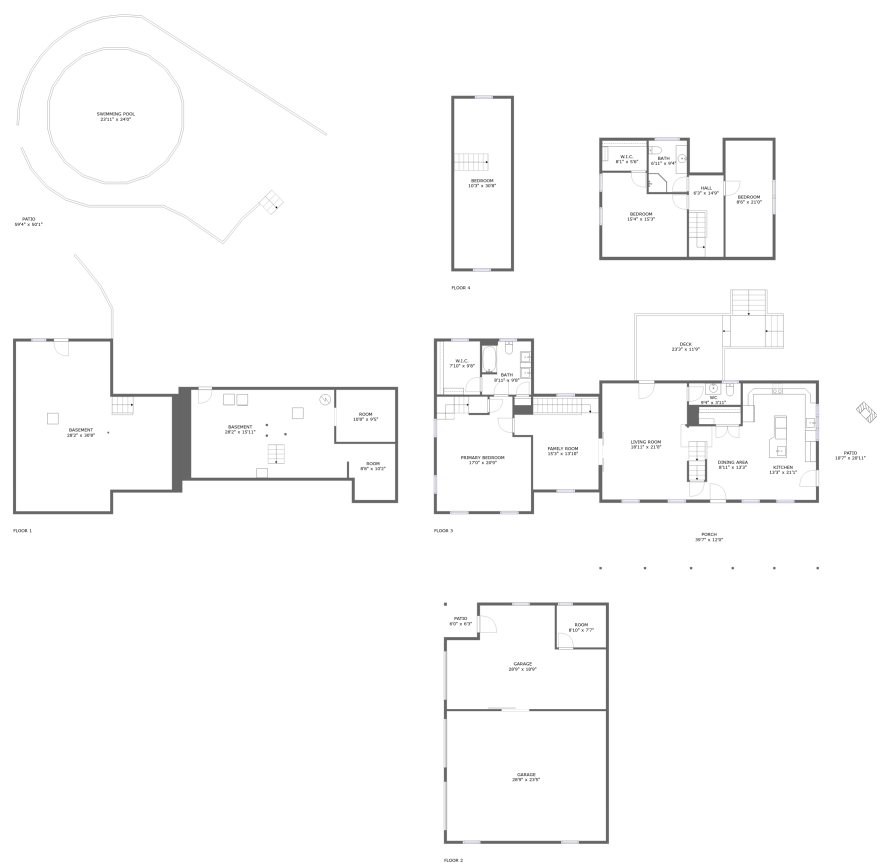


Home report

2763 Lake Road, Clark, Mercer County, Pennsylvania, United States, 16113



Total Area: 2292 sq. ft

Below Ground: 0 sq. ft, Floor 2: 0 sq. ft, Floor 3: 1551 sq. ft, Floor 4: 741 sq. ft
Excluded: Basement 1197 sq. ft, Room 254 sq. ft, Patio 1620 sq. ft, Garage 1102 sq. ft, Porch 476 sq. ft, Deck 273 sq. ft, Low ceiling 179 sq. ft, Walls: 400 sq. ft

Property summary

 **4** Floors

 **4** Bedrooms

 **2** Bathrooms

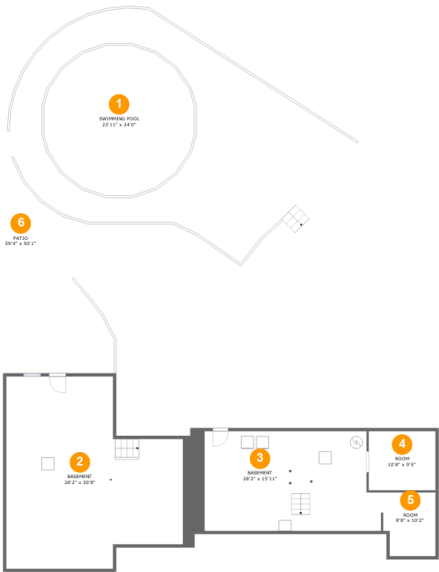
Home report

2763 Lake Road, Clark, Mercer County, Pennsylvania, United States, 16113

 **1**
Half baths

 **2**
Garages

2763 Lake Road, Clark, Mercer County, Pennsylvania, United States, 16113



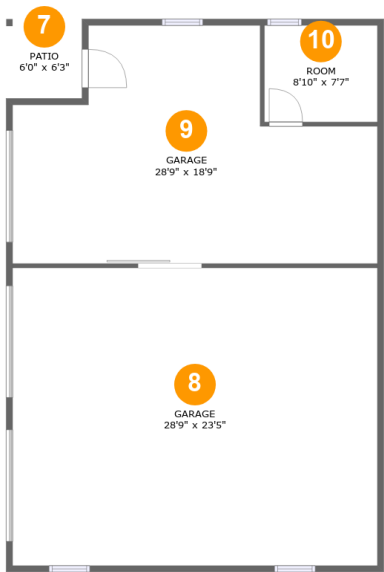
Room dimensions

Floor 1 Below ground Total:0sqft Excluded: 2744sqft

#		Max Dimensions	sqft	Included
1	Swimming Pool	23'11" x 24'0"	460 sq. ft	No
2	Basement	28'2" x 30'8"	733 sq. ft	No
3	Basement	28'2" x 15'11"	453 sq. ft	No
4	Room	10'8" x 9'5"	101 sq. ft	No
5	Room	8'8" x 10'2"	82 sq. ft	No
6	Patio	59'4" x 50'1"	1821 sq. ft	No

Home report

2763 Lake Road, Clark, Mercer County, Pennsylvania, United States, 16113

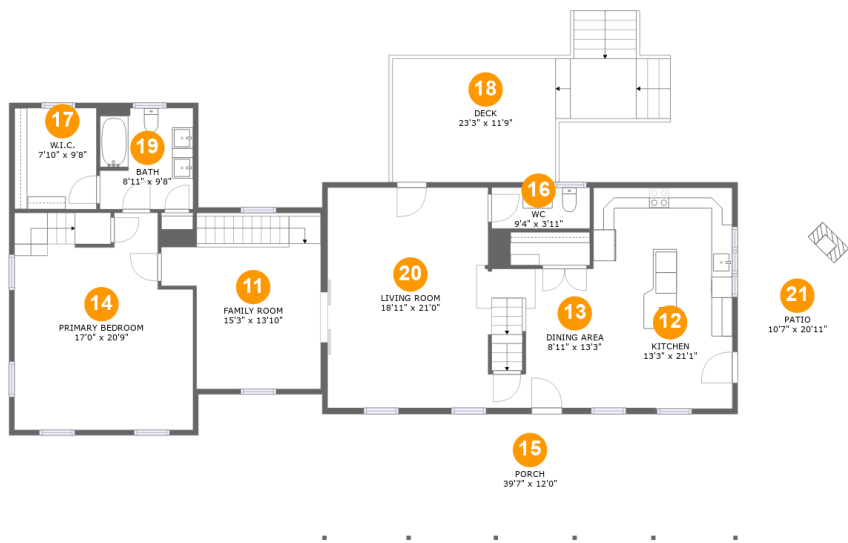


Room dimensions

Floor 2 Total:0sqft Excluded: 1207sqft

#		Max Dimensions	sqft	Included
7	Patio	6'0" x 6'3"	37 sq. ft	No
8	Garage	28'9" x 23'5"	674 sq. ft	No
9	Garage	28'9" x 18'9"	428 sq. ft	No
10	Room	8'10" x 7'7"	68 sq. ft	No

2763 Lake Road, Clark, Mercer County, Pennsylvania, United States, 16113



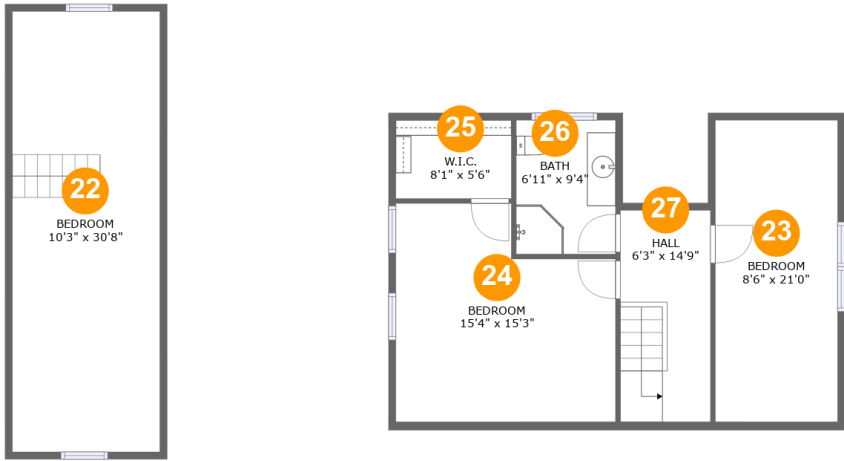
Room dimensions

Floor 3 Total:1551sqft Excluded: 971sqft

#		Max Dimensions	sqft	Included
11	Family Room	15'3" x 13'10"	211 sq. ft	Yes
12	Kitchen	13'3" x 21'1"	246 sq. ft	Yes
13	Dining Area	8'11" x 13'3"	118 sq. ft	Yes
14	Primary Bedroom	17'0" x 20'9"	326 sq. ft	Yes
15	Porch	39'7" x 12'0"	476 sq. ft	No
16	WC	9'4" x 3'11"	37 sq. ft	Yes
17	W.I.C.	7'10" x 9'8"	75 sq. ft	Yes
18	Deck	23'3" x 11'9"	273 sq. ft	No
19	Bath	8'11" x 9'8"	85 sq. ft	Yes
20	Living Room	18'11" x 21'0"	366 sq. ft	Yes
21	Patio	10'7" x 20'11"	222 sq. ft	No

Home report

2763 Lake Road, Clark, Mercer County, Pennsylvania, United States, 16113



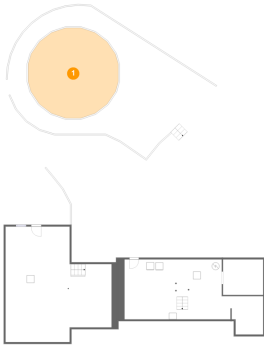
Room dimensions

Floor 4 Total:741sqft Excluded: 179sqft

#		Max Dimensions	sqft	Included
22	Bedroom	10'3" x 30'8"	191 sq. ft	Yes
23	Bedroom	8'6" x 21'0"	159 sq. ft	Yes
24	Bedroom	15'4" x 15'3"	186 sq. ft	Yes
25	W.I.C.	8'1" x 5'6"	35 sq. ft	Yes
26	Bath	6'11" x 9'4"	65 sq. ft	Yes
27	Hall	6'3" x 14'9"	88 sq. ft	Yes

2763 Lake Road, Clark, Mercer County, Pennsylvania, United States, 16113

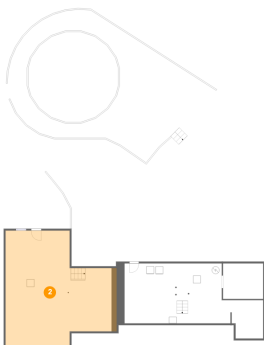
1 Floor 1 - Swimming Pool



Max Dimensions: 23'11" x 24'0"
Calculated Area: 460 sq. ft
Included: No

Heated: No
Finished: No
Enclosed: No
Contiguous: Yes
Permitted: No
Wet space: No
Addition: No
Conversion: No

2 Floor 1 - Basement

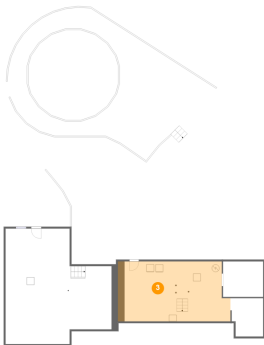


Max Dimensions: 28'2" x 30'8"
Calculated Area: 733 sq. ft
Included: No

Heated: Yes
Finished: No
Enclosed: Yes
Contiguous: Yes
Permitted: Yes
Wet space: No
Addition: No
Conversion: No

2763 Lake Road, Clark, Mercer County, Pennsylvania, United States, 16113

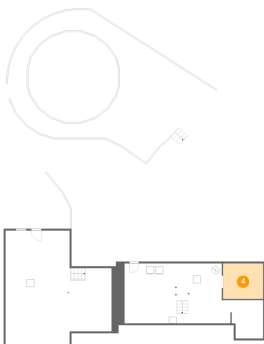
3 Floor 1 - Basement



Max Dimensions: 28'2" x 15'11"
Calculated Area: 453 sq. ft
Included: No

Heated: Yes
Finished: No
Enclosed: Yes
Contiguous: Yes
Permitted: Yes
Wet space: No
Addition: No
Conversion: No

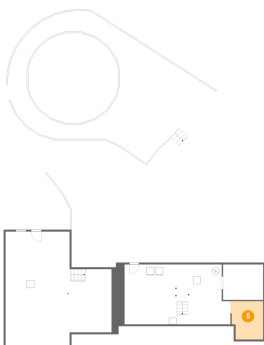
4 Floor 1 - Room



Max Dimensions: 10'8" x 9'5"
Calculated Area: 101 sq. ft
Included: No

Heated: Yes
Finished: No
Enclosed: Yes
Contiguous: Yes
Permitted: Yes
Wet space: No
Addition: No
Conversion: No

5 Floor 1 - Room

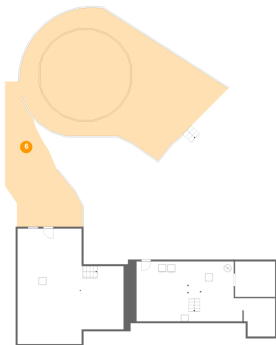


Max Dimensions: 8'8" x 10'2"
Calculated Area: 82 sq. ft
Included: No

Heated: Yes
Finished: No
Enclosed: Yes
Contiguous: Yes
Permitted: Yes
Wet space: No
Addition: No
Conversion: No

2763 Lake Road, Clark, Mercer County, Pennsylvania, United States, 16113

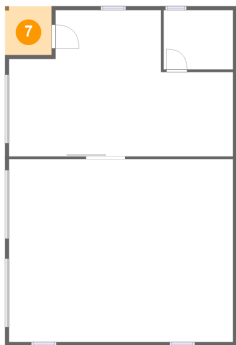
6 Floor 1 - Patio



Max Dimensions: 59'4" x 50'1"
Calculated Area: 1821 sq. ft
Included: No

Heated: No
Finished: Yes
Enclosed: No
Contiguous: Yes
Permitted: Yes
Wet space: No
Addition: No
Conversion: No

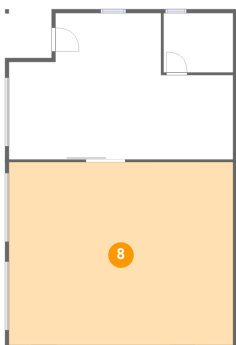
7 Floor 2 - Patio



Max Dimensions: 6'0" x 6'3"
Calculated Area: 37 sq. ft
Included: No

Heated: No
Finished: Yes
Enclosed: No
Contiguous: Yes
Permitted: Yes
Wet space: No
Addition: No
Conversion: No

8 Floor 2 - Garage

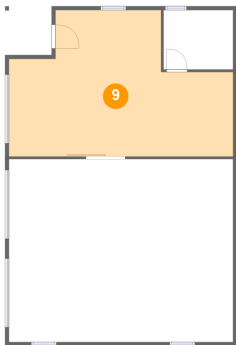


Max Dimensions: 28'9" x 23'5"
Calculated Area: 674 sq. ft
Included: No

Heated: No
Finished: No
Enclosed: Yes
Contiguous: Yes
Permitted: Yes
Wet space: No
Addition: No
Conversion: No

2763 Lake Road, Clark, Mercer County, Pennsylvania, United States, 16113

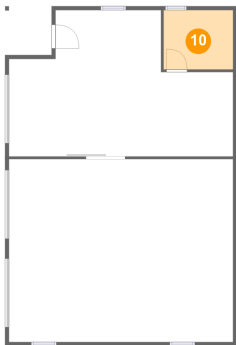
9 Floor 2 - Garage



Max Dimensions: 28'9" x 18'9"
Calculated Area: 428 sq. ft
Included: No

Heated: No
Finished: No
Enclosed: Yes
Contiguous: Yes
Permitted: Yes
Wet space: No
Addition: No
Conversion: No

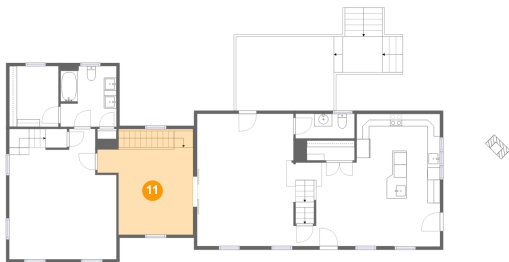
10 Floor 2 - Room



Max Dimensions: 8'10" x 7'7"
Calculated Area: 68 sq. ft
Included: No

Heated: Yes
Finished: No
Enclosed: Yes
Contiguous: Yes
Permitted: Yes
Wet space: No
Addition: No
Conversion: No

11 Floor 3 - Family Room



Max Dimensions: 15'3" x 13'10"
Calculated Area: 211 sq. ft
Included: Yes

Heated: Yes
Finished: Yes
Enclosed: Yes
Contiguous: Yes
Permitted: Yes
Wet space: No
Addition: No
Conversion: No

2763 Lake Road, Clark, Mercer County, Pennsylvania, United States, 16113

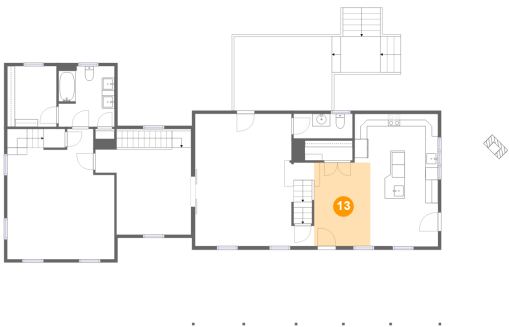
12 Floor 3 - Kitchen



Max Dimensions: 13'3" x 21'1"
Calculated Area: 246 sq. ft
Included: Yes

Heated: Yes
Finished: Yes
Enclosed: Yes
Contiguous: Yes
Permitted: Yes
Wet space: No
Addition: No
Conversion: No

13 Floor 3 - Dining Area



Max Dimensions: 8'11" x 13'3"
Calculated Area: 118 sq. ft
Included: Yes

Heated: Yes
Finished: Yes
Enclosed: Yes
Contiguous: Yes
Permitted: Yes
Wet space: No
Addition: No
Conversion: No

14 Floor 3 - Primary Bedroom

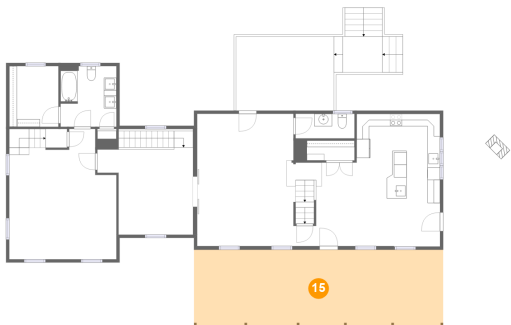


Max Dimensions: 17'0" x 20'9"
Calculated Area: 326 sq. ft
Included: Yes

Heated: Yes
Finished: Yes
Enclosed: Yes
Contiguous: Yes
Permitted: Yes
Wet space: No
Addition: No
Conversion: No

2763 Lake Road, Clark, Mercer County, Pennsylvania, United States, 16113

15 Floor 3 - Porch



Max Dimensions: 39'7" x 12'0"
Calculated Area: 476 sq. ft
Included: No

Heated: No
Finished: Yes
Enclosed: No
Contiguous: Yes
Permitted: Yes
Wet space: No
Addition: No
Conversion: No

16 Floor 3 - WC



Max Dimensions: 9'4" x 3'11"
Calculated Area: 37 sq. ft
Included: Yes

Heated: Yes
Finished: Yes
Enclosed: Yes
Contiguous: Yes
Permitted: Yes
Wet space: Yes
Addition: No
Conversion: No

17 Floor 3 - W.I.C.

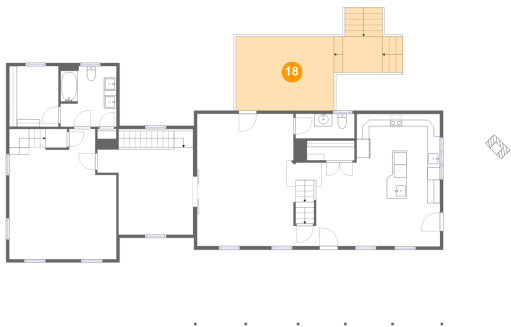


Max Dimensions: 7'10" x 9'8"
Calculated Area: 75 sq. ft
Included: Yes

Heated: Yes
Finished: Yes
Enclosed: Yes
Contiguous: Yes
Permitted: Yes
Wet space: No
Addition: No
Conversion: No

2763 Lake Road, Clark, Mercer County, Pennsylvania, United States, 16113

18 Floor 3 - Deck



Max Dimensions: 23'3" x 11'9"
Calculated Area: 273 sq. ft
Included: No

Heated: No
Finished: Yes
Enclosed: No
Contiguous: Yes
Permitted: Yes
Wet space: No
Addition: No
Conversion: No

19 Floor 3 - Bath



Max Dimensions: 8'11" x 9'8"
Calculated Area: 85 sq. ft
Included: Yes

Heated: Yes
Finished: Yes
Enclosed: Yes
Contiguous: Yes
Permitted: Yes
Wet space: Yes
Addition: No
Conversion: No

20 Floor 3 - Living Room

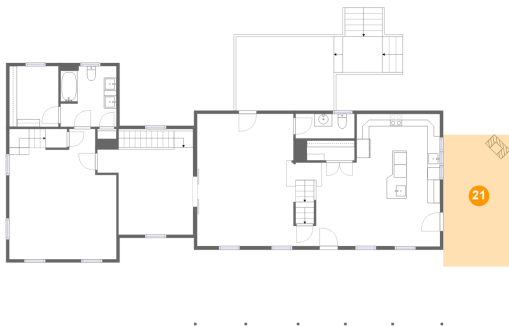


Max Dimensions: 18'11" x 21'0"
Calculated Area: 366 sq. ft
Included: Yes

Heated: Yes
Finished: Yes
Enclosed: Yes
Contiguous: Yes
Permitted: Yes
Wet space: No
Addition: No
Conversion: No

2763 Lake Road, Clark, Mercer County, Pennsylvania, United States, 16113

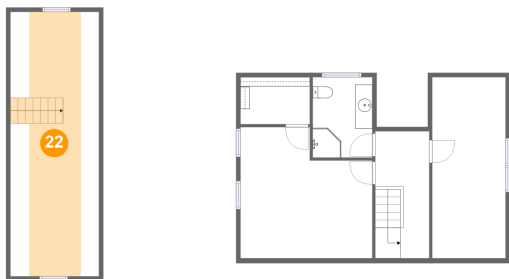
21 Floor 3 - Patio



Max Dimensions: 10'7" x 20'11"
Calculated Area: 222 sq. ft
Included: No

Heated: No
Finished: Yes
Enclosed: No
Contiguous: Yes
Permitted: Yes
Wet space: No
Addition: No
Conversion: No

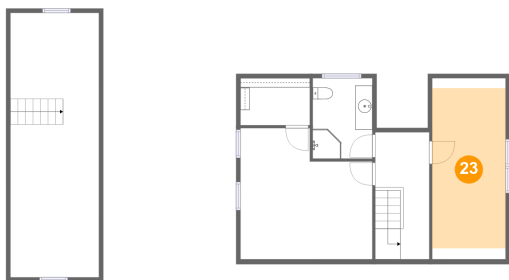
22 Floor 4 - Bedroom



Max Dimensions: 10'3" x 30'8"
Calculated Area: 191 sq. ft
Included: Yes

Heated: Yes
Finished: Yes
Enclosed: Yes
Contiguous: Yes
Permitted: Yes
Wet space: No
Addition: No
Conversion: No

23 Floor 4 - Bedroom

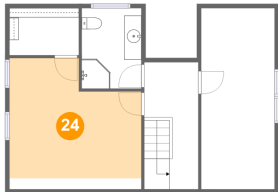
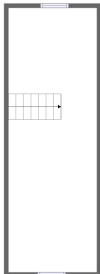


Max Dimensions: 8'6" x 21'0"
Calculated Area: 159 sq. ft
Included: Yes

Heated: Yes
Finished: Yes
Enclosed: Yes
Contiguous: Yes
Permitted: Yes
Wet space: No
Addition: No
Conversion: No

2763 Lake Road, Clark, Mercer County, Pennsylvania, United States, 16113

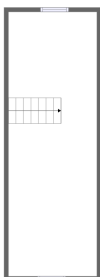
24 Floor 4 - Bedroom



Max Dimensions: 15'4" x 15'3"
Calculated Area: 186 sq. ft
Included: Yes

Heated: Yes
Finished: Yes
Enclosed: Yes
Contiguous: Yes
Permitted: Yes
Wet space: No
Addition: No
Conversion: No

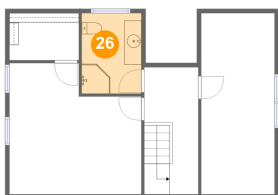
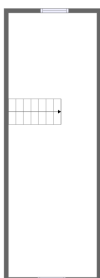
25 Floor 4 - W.I.C.



Max Dimensions: 8'1" x 5'6"
Calculated Area: 35 sq. ft
Included: Yes

Heated: Yes
Finished: Yes
Enclosed: Yes
Contiguous: Yes
Permitted: Yes
Wet space: No
Addition: No
Conversion: No

26 Floor 4 - Bath

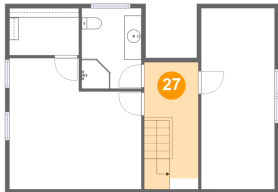
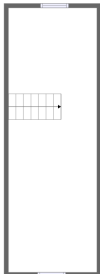


Max Dimensions: 6'11" x 9'4"
Calculated Area: 65 sq. ft
Included: Yes

Heated: Yes
Finished: Yes
Enclosed: Yes
Contiguous: Yes
Permitted: Yes
Wet space: Yes
Addition: No
Conversion: No

2763 Lake Road, Clark, Mercer County, Pennsylvania, United States, 16113

27 Floor 4 - Hall



Max Dimensions: 6'3" x 14'9"
Calculated Area: 88 sq. ft
Included: Yes

Heated: Yes
Finished: Yes
Enclosed: Yes
Contiguous: Yes
Permitted: Yes
Wet space: No
Addition: No
Conversion: No