

Home report

7045 Highfields Farm Trail, Highfields Farm Estates, Roanoke,
Roanoke County, Virginia, United States, 24018



Total Area: 3351 sq. ft

Below Ground: 1141 sq. ft, Floor 2: 2210 sq. ft

Excluded: Covered patio 517 sq. ft, Utility 881 sq. ft, Electrical room 40 sq. ft, Porch 69 sq. ft, Screened porch 297 sq. ft, Deck 190 sq. ft, Garage 664 sq. ft, Walls: 287 sq. ft

Property summary

 **2** Floors

 **4** Bedrooms

 **3** Bathrooms

Home report

**7045 Highfields Farm Trail, Highfields Farm Estates, Roanoke,
Roanoke County, Virginia, United States, 24018**



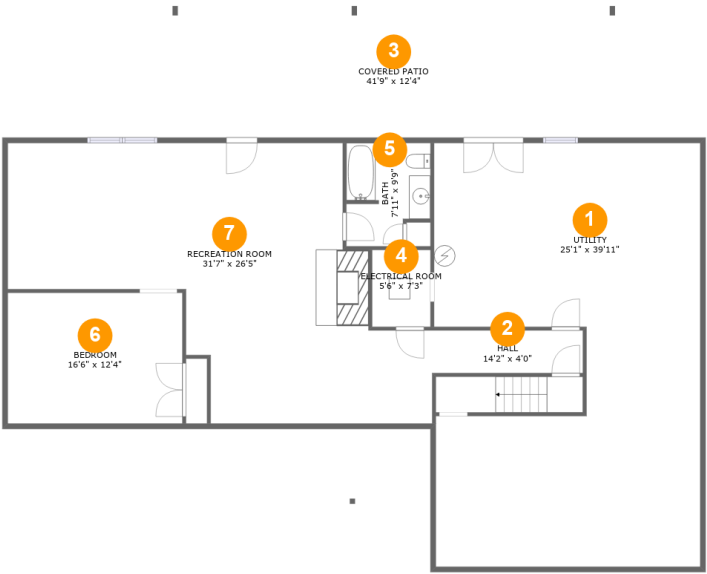
1
Half baths



1
Garages

Home report

7045 Highfields Farm Trail, Highfields Farm Estates, Roanoke,
Roanoke County, Virginia, United States, 24018



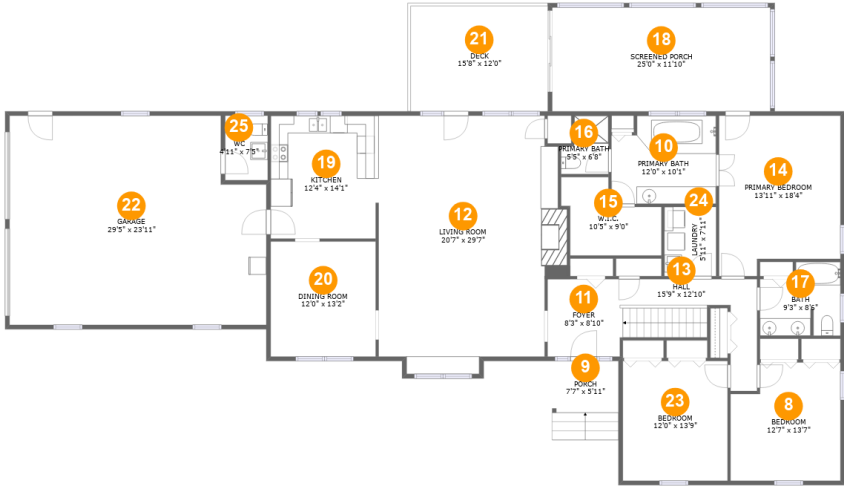
Room dimensions

Floor 1 Below ground Total:1141sqft Excluded: 1438sqft

#		Max Dimensions	sqft	Included
1	Utility	25'1" x 39'11"	879 sq. ft	No
2	Hall	14'2" x 4'0"	57 sq. ft	Yes
3	Covered Patio	41'9" x 12'4"	517 sq. ft	No
4	Electrical Room	5'6" x 7'3"	40 sq. ft	No
5	Bath	7'11" x 9'9"	70 sq. ft	Yes
6	Bedroom	16'6" x 12'4"	203 sq. ft	Yes
7	Recreation Room	31'7" x 26'5"	700 sq. ft	Yes

Home report

7045 Highfields Farm Trail, Highfields Farm Estates, Roanoke,
Roanoke County, Virginia, United States, 24018



Room dimensions

Floor 2 Total:2210sqft Excluded: 1220sqft

#		Max Dimensions	sqft	Included
8	Bedroom	12'7" x 13'7"	158 sq. ft	Yes
9	Porch	7'7" x 5'11"	69 sq. ft	No
10	Primary Bath	12'0" x 10'1"	115 sq. ft	Yes
11	Foyer	8'3" x 8'10"	74 sq. ft	Yes
12	Living Room	20'7" x 29'7"	573 sq. ft	Yes
13	Hall	15'9" x 12'10"	114 sq. ft	Yes
14	Primary Bedroom	13'11" x 18'4"	237 sq. ft	Yes
15	W.I.C.	10'5" x 9'0"	77 sq. ft	Yes
16	Primary Bath	5'5" x 6'8"	31 sq. ft	Yes
17	Bath	9'3" x 8'6"	69 sq. ft	Yes
18	Screened Porch	25'0" x 11'10"	297 sq. ft	No

Home report

**7045 Highfields Farm Trail, Highfields Farm Estates, Roanoke,
Roanoke County, Virginia, United States, 24018**

#		Max Dimensions	sqft	Included
19	Kitchen	12'4" x 14'1"	173 sq. ft	Yes
20	Dining Room	12'0" x 13'2"	159 sq. ft	Yes
21	Deck	15'8" x 12'0"	190 sq. ft	No
22	Garage	29'5" x 23'11"	664 sq. ft	No
23	Bedroom	12'0" x 13'9"	165 sq. ft	Yes
24	Laundry	5'11" x 7'11"	47 sq. ft	Yes
25	WC	4'11" x 7'5"	36 sq. ft	Yes

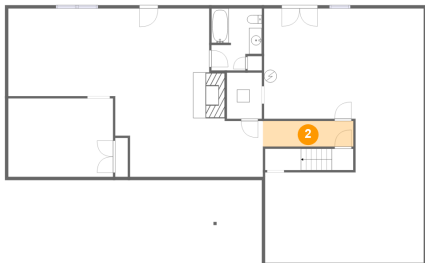
1 Floor 1 - Utility



Max Dimensions: 25'1" x 39'11"
Calculated Area: 879 sq. ft
Included: No

Heated: Yes
Finished: No
Enclosed: Yes
Contiguous: Yes
Permitted: Yes
Wet space: No
Addition: No
Conversion: No

2 Floor 1 - Hall

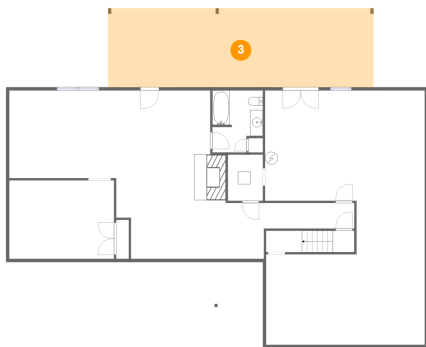


Max Dimensions: 14'2" x 4'0"
Calculated Area: 57 sq. ft
Included: Yes

Heated: Yes
Finished: Yes
Enclosed: Yes
Contiguous: Yes
Permitted: Yes
Wet space: No
Addition: No
Conversion: No

7045 Highfields Farm Trail, Highfields Farm Estates, Roanoke,
Roanoke County, Virginia, United States, 24018

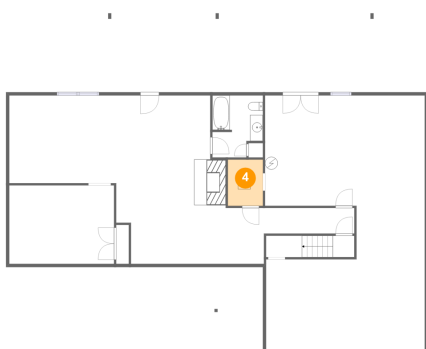
3 Floor 1 - Covered Patio



Max Dimensions: 41'9" x 12'4"
Calculated Area: 517 sq. ft
Included: No

Heated: No
Finished: Yes
Enclosed: No
Contiguous: Yes
Permitted: Yes
Wet space: No
Addition: No
Conversion: No

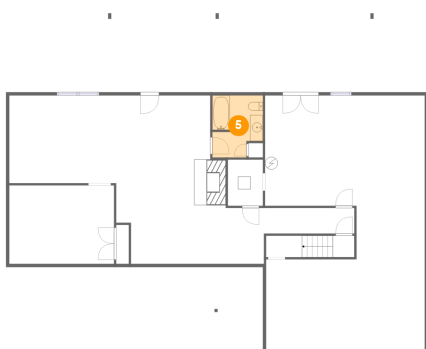
4 Floor 1 - Electrical Room



Max Dimensions: 5'6" x 7'3"
Calculated Area: 40 sq. ft
Included: No

Heated: No
Finished: No
Enclosed: Yes
Contiguous: Yes
Permitted: Yes
Wet space: No
Addition: No
Conversion: No

5 Floor 1 - Bath



Max Dimensions: 7'11" x 9'9"
Calculated Area: 70 sq. ft
Included: Yes

Heated: Yes
Finished: Yes
Enclosed: Yes
Contiguous: Yes
Permitted: Yes
Wet space: Yes
Addition: No
Conversion: No

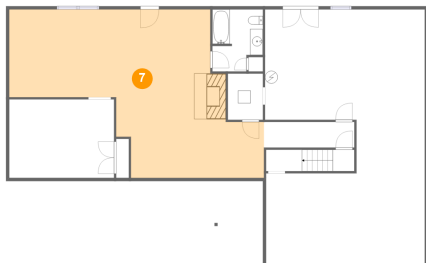
6 Floor 1 - Bedroom



Max Dimensions: 16'6" x 12'4"
Calculated Area: 203 sq. ft
Included: Yes

Heated: Yes
Finished: Yes
Enclosed: Yes
Contiguous: Yes
Permitted: Yes
Wet space: No
Addition: No
Conversion: No

7 Floor 1 - Recreation Room



Max Dimensions: 31'7" x 26'5"
Calculated Area: 700 sq. ft
Included: Yes

Heated: Yes
Finished: Yes
Enclosed: Yes
Contiguous: Yes
Permitted: Yes
Wet space: No
Addition: No
Conversion: No

8 Floor 2 - Bedroom

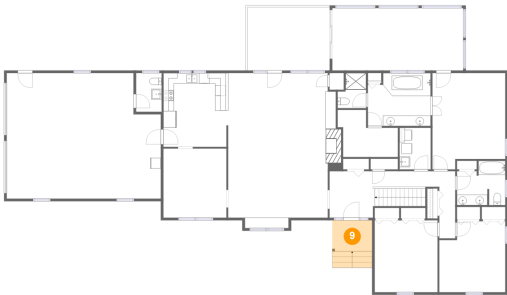


Max Dimensions: 12'7" x 13'7"
Calculated Area: 158 sq. ft
Included: Yes

Heated: Yes
Finished: Yes
Enclosed: Yes
Contiguous: Yes
Permitted: Yes
Wet space: No
Addition: No
Conversion: No

7045 Highfields Farm Trail, Highfields Farm Estates, Roanoke,
Roanoke County, Virginia, United States, 24018

9 Floor 2 - Porch



Max Dimensions: 7'7" x 5'11"
Calculated Area: 69 sq. ft
Included: No

Heated: No
Finished: Yes
Enclosed: No
Contiguous: Yes
Permitted: Yes
Wet space: No
Addition: No
Conversion: No

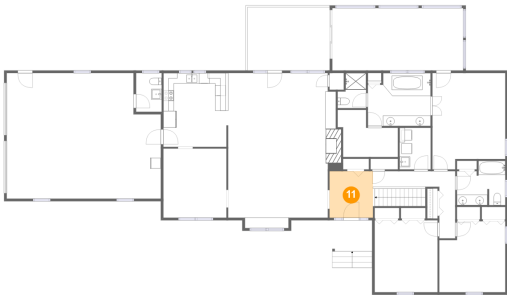
10 Floor 2 - Primary Bath



Max Dimensions: 12'0" x 10'1"
Calculated Area: 115 sq. ft
Included: Yes

Heated: Yes
Finished: Yes
Enclosed: Yes
Contiguous: Yes
Permitted: Yes
Wet space: Yes
Addition: No
Conversion: No

11 Floor 2 - Foyer

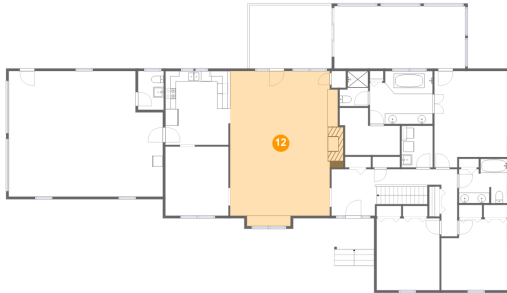


Max Dimensions: 8'3" x 8'10"
Calculated Area: 74 sq. ft
Included: Yes

Heated: Yes
Finished: Yes
Enclosed: Yes
Contiguous: Yes
Permitted: Yes
Wet space: No
Addition: No
Conversion: No

7045 Highfields Farm Trail, Highfields Farm Estates, Roanoke,
Roanoke County, Virginia, United States, 24018

12 Floor 2 - Living Room



Max Dimensions: 20'7" x 29'7"
Calculated Area: 573 sq. ft
Included: Yes

Heated: Yes
Finished: Yes
Enclosed: Yes
Contiguous: Yes
Permitted: Yes
Wet space: No
Addition: No
Conversion: No

13 Floor 2 - Hall



Max Dimensions: 15'9" x 12'10"
Calculated Area: 114 sq. ft
Included: Yes

Heated: Yes
Finished: Yes
Enclosed: Yes
Contiguous: Yes
Permitted: Yes
Wet space: No
Addition: No
Conversion: No

14 Floor 2 - Primary Bedroom

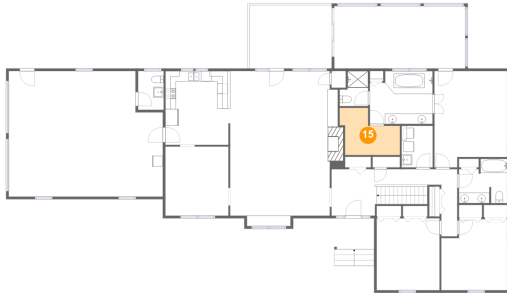


Max Dimensions: 13'11" x 18'4"
Calculated Area: 237 sq. ft
Included: Yes

Heated: Yes
Finished: Yes
Enclosed: Yes
Contiguous: Yes
Permitted: Yes
Wet space: No
Addition: No
Conversion: No

7045 Highfields Farm Trail, Highfields Farm Estates, Roanoke,
Roanoke County, Virginia, United States, 24018

15 Floor 2 - W.I.C.



Max Dimensions: 10'5" x 9'0"
Calculated Area: 77 sq. ft
Included: Yes

Heated: Yes
Finished: Yes
Enclosed: Yes
Contiguous: Yes
Permitted: Yes
Wet space: No
Addition: No
Conversion: No

16 Floor 2 - Primary Bath



Max Dimensions: 5'5" x 6'8"
Calculated Area: 31 sq. ft
Included: Yes

Heated: Yes
Finished: Yes
Enclosed: Yes
Contiguous: Yes
Permitted: Yes
Wet space: Yes
Addition: No
Conversion: No

17 Floor 2 - Bath



Max Dimensions: 9'3" x 8'6"
Calculated Area: 69 sq. ft
Included: Yes

Heated: Yes
Finished: Yes
Enclosed: Yes
Contiguous: Yes
Permitted: Yes
Wet space: Yes
Addition: No
Conversion: No

7045 Highfields Farm Trail, Highfields Farm Estates, Roanoke,
Roanoke County, Virginia, United States, 24018

18 Floor 2 - Screened Porch



Max Dimensions: 25'0" x 11'10"
Calculated Area: 297 sq. ft
Included: No

Heated: No
Finished: Yes
Enclosed: No
Contiguous: Yes
Permitted: Yes
Wet space: No
Addition: No
Conversion: No

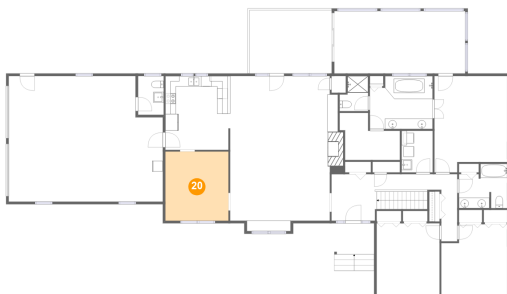
19 Floor 2 - Kitchen



Max Dimensions: 12'4" x 14'1"
Calculated Area: 173 sq. ft
Included: Yes

Heated: Yes
Finished: Yes
Enclosed: Yes
Contiguous: Yes
Permitted: Yes
Wet space: No
Addition: No
Conversion: No

20 Floor 2 - Dining Room

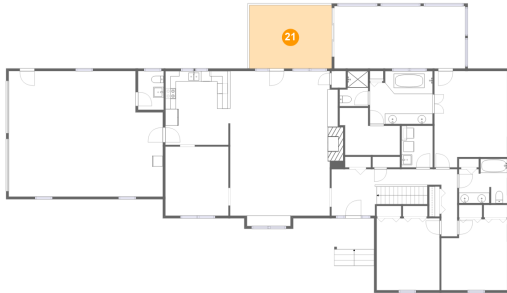


Max Dimensions: 12'0" x 13'2"
Calculated Area: 159 sq. ft
Included: Yes

Heated: Yes
Finished: Yes
Enclosed: Yes
Contiguous: Yes
Permitted: Yes
Wet space: No
Addition: No
Conversion: No

7045 Highfields Farm Trail, Highfields Farm Estates, Roanoke,
Roanoke County, Virginia, United States, 24018

21 Floor 2 - Deck



Max Dimensions: 15'8" x
12'0"
Calculated Area: 190 sq. ft
Included: No

Heated: No
Finished: Yes
Enclosed: No
Contiguous:
No
Permitted: Yes
Wet space: No
Addition: No
Conversion:
No

22 Floor 2 - Garage



Max Dimensions: 29'5" x
23'11"
Calculated Area: 664 sq. ft
Included: No

Heated: No
Finished: No
Enclosed: Yes
Contiguous:
Yes
Permitted: Yes
Wet space: No
Addition: No
Conversion: No

23 Floor 2 - Bedroom



Max Dimensions: 12'0" x
13'9"
Calculated Area: 165 sq. ft
Included: Yes

Heated: Yes
Finished: Yes
Enclosed: Yes
Contiguous:
Yes
Permitted: Yes
Wet space: No
Addition: No
Conversion: No

7045 Highfields Farm Trail, Highfields Farm Estates, Roanoke,
Roanoke County, Virginia, United States, 24018

24 Floor 2 - Laundry



Max Dimensions: 5'11" x 7'11"
Calculated Area: 47 sq. ft
Included: Yes

Heated: Yes
Finished: Yes
Enclosed: Yes
Contiguous: Yes
Permitted: Yes
Wet space: No
Addition: No
Conversion: No

25 Floor 2 - WC



Max Dimensions: 4'11" x 7'5"
Calculated Area: 36 sq. ft
Included: Yes

Heated: Yes
Finished: Yes
Enclosed: Yes
Contiguous: Yes
Permitted: Yes
Wet space: Yes
Addition: No
Conversion: No