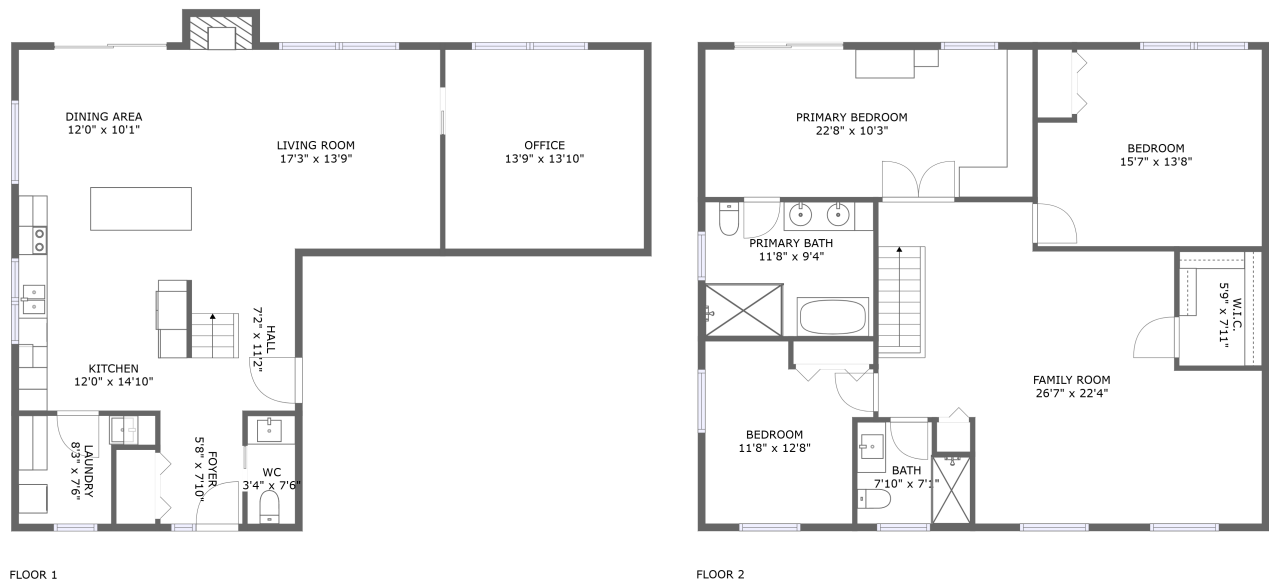




Home report


3826 McGahey Lane, Kemptville, United Counties of Leeds and
Grenville, Ontario, Canada, K0G 1J0





Property summary


 **0** Garages


 **3** Bedrooms

 **2** Bathrooms

 **1** Half baths

 **2** Floors

 **2,381** Gross living area sqft

 **2,393** Total sqft

Home report

3826 McGahey Lane, Kemptville, United Counties of Leeds and
Grenville, Ontario, Canada, K0G 1J0



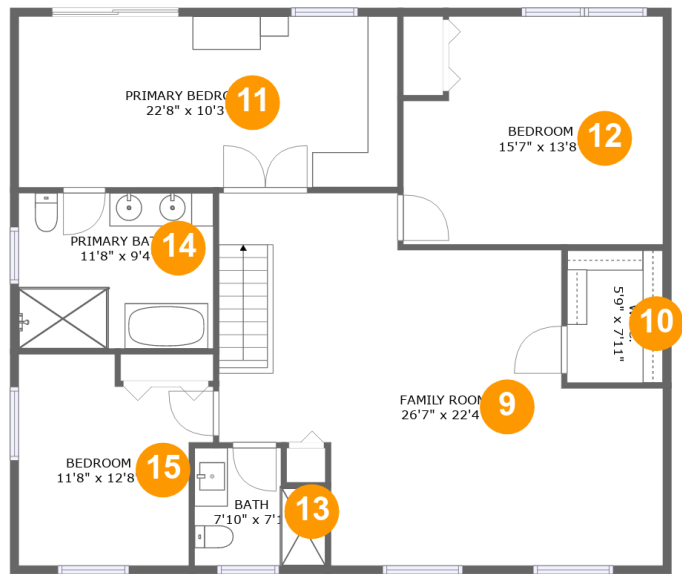
Room dimensions

Floor 1 Total sqft: 1052 Living area: 1040

#		Dimensions	sqft	Counted as living area
1	Dining Area	12'0" x 10'1"	122 sq. ft	Yes
2	Living Room	17'3" x 13'9"	247 sq. ft	Yes
3	Laundry	8'3" x 7'6"	54 sq. ft	Yes
4	Office	13'9" x 13'10"	190 sq. ft	Yes
5	Hall	7'2" x 11'2"	80 sq. ft	Yes
6	WC	3'4" x 7'6"	25 sq. ft	Yes
7	Foyer	5'8" x 7'10"	45 sq. ft	Yes
8	Kitchen	12'0" x 14'10"	178 sq. ft	Yes

Home report

3826 McGahey Lane, Kemptville, United Counties of Leeds and
Grenville, Ontario, Canada, K0G 1J0



Room dimensions

Floor 2 Total sqft: 1341 Living area: 1341

#		Dimensions	sqft	Counted as living area
9	Family Room	26'7" x 22'4"	439 sq. ft	Yes
10	W.I.C.	5'9" x 7'11"	46 sq. ft	Yes
11	Primary Bedroom	22'8" x 10'3"	232 sq. ft	Yes
12	Bedroom	15'7" x 13'8"	198 sq. ft	Yes
13	Bath	7'10" x 7'1"	49 sq. ft	Yes
14	Primary Bath	11'8" x 9'4"	109 sq. ft	Yes
15	Bedroom	11'8" x 12'8"	125 sq. ft	Yes

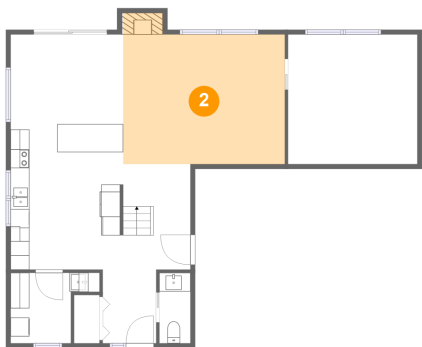
1 Floor 1 - Dining Area



Dimensions: 12'0" x 10'1"
Area: 122 sq. ft
Counted as living area: Yes

Heated: Yes
Finished: Yes
Enclosed: Yes
Contiguous: Yes
Permitted: Yes
Wet space: No
Addition: No
Conversion: No

2 Floor 1 - Living Room



Dimensions: 17'3" x 13'9"
Area: 247 sq. ft
Counted as living area: Yes

Heated: Yes
Finished: Yes
Enclosed: Yes
Contiguous: Yes
Permitted: Yes
Wet space: No
Addition: No
Conversion: No

Home report

3826 McGahey Lane, Kemptville, United Counties of Leeds and
Grenville, Ontario, Canada, K0G 1J0

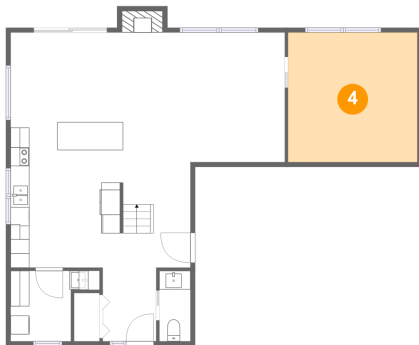
3 Floor 1 - Laundry



Dimensions: 8'3" x 7'6"
Area: 54 sq. ft
Counted as living area: Yes

Heated: Yes
Finished: Yes
Enclosed: Yes
Contiguous: Yes
Permitted: Yes
Wet space: No
Addition: No
Conversion: No

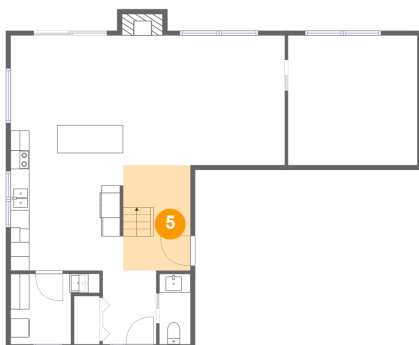
4 Floor 1 - Office



Dimensions: 13'9" x 13'10"
Area: 190 sq. ft
Counted as living area: Yes

Heated: Yes
Finished: Yes
Enclosed: Yes
Contiguous: Yes
Permitted: Yes
Wet space: No
Addition: No
Conversion: No

5 Floor 1 - Hall



Dimensions: 7'2" x 11'2"
Area: 80 sq. ft
Counted as living area: Yes

Heated: Yes
Finished: Yes
Enclosed: Yes
Contiguous: Yes
Permitted: Yes
Wet space: No
Addition: No
Conversion: No

Home report

3826 McGahey Lane, Kemptville, United Counties of Leeds and
Grenville, Ontario, Canada, K0G 1J0

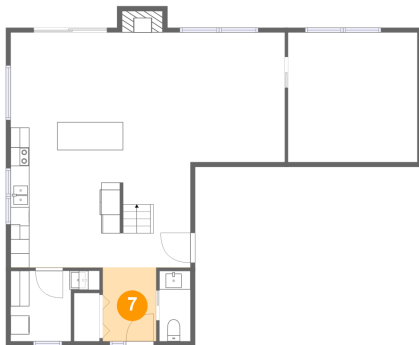
6 Floor 1 - WC



Dimensions: 3'4" x 7'6"
Area: 25 sq. ft
Counted as living area: Yes

Heated: Yes
Finished: Yes
Enclosed: Yes
Contiguous: Yes
Permitted: Yes
Wet space: Yes
Addition: No
Conversion: No

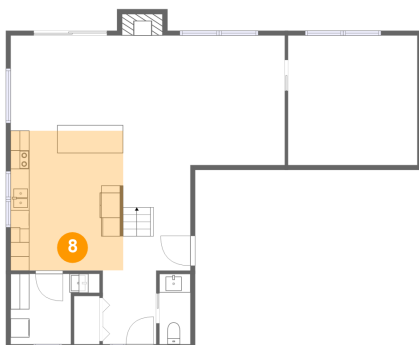
7 Floor 1 - Foyer



Dimensions: 5'8" x 7'10"
Area: 45 sq. ft
Counted as living area: Yes

Heated: Yes
Finished: Yes
Enclosed: Yes
Contiguous: Yes
Permitted: Yes
Wet space: No
Addition: No
Conversion: No

8 Floor 1 - Kitchen

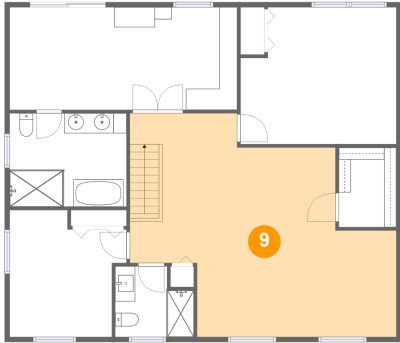


Dimensions: 12'0" x 14'10"
Area: 178 sq. ft
Counted as living area: Yes

Heated: Yes
Finished: Yes
Enclosed: Yes
Contiguous: Yes
Permitted: Yes
Wet space: No
Addition: No
Conversion: No

3826 McGahey Lane, Kemptville, United Counties of Leeds and
Grenville, Ontario, Canada, K0G 1J0

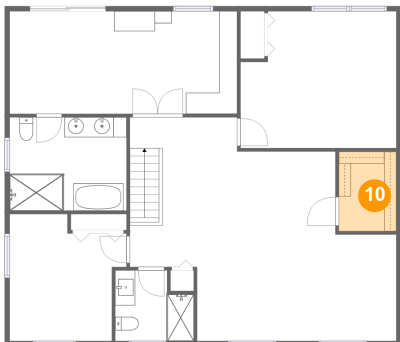
9 Floor 2 - Family Room



Dimensions: 26'7" x 22'4"
Area: 439 sq. ft
Counted as living area: Yes

Heated: Yes
Finished: Yes
Enclosed: Yes
Contiguous: Yes
Permitted: Yes
Wet space: No
Addition: No
Conversion: No

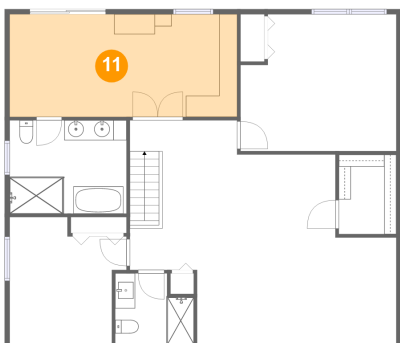
10 Floor 2 - W.I.C.



Dimensions: 5'9" x 7'11"
Area: 46 sq. ft
Counted as living area: Yes

Heated: Yes
Finished: Yes
Enclosed: Yes
Contiguous: Yes
Permitted: Yes
Wet space: No
Addition: No
Conversion: No

11 Floor 2 - Primary Bedroom



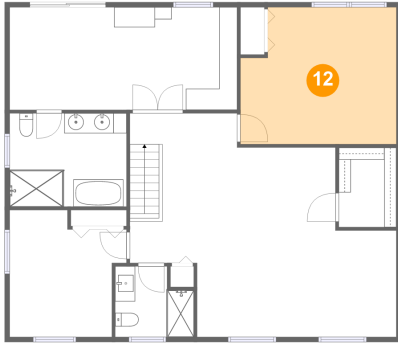
Dimensions: 22'8" x 10'3"
Area: 232 sq. ft
Counted as living area: Yes

Heated: Yes
Finished: Yes
Enclosed: Yes
Contiguous: Yes
Permitted: Yes
Wet space: No
Addition: No
Conversion: No

Home report

3826 McGahey Lane, Kemptville, United Counties of Leeds and
Grenville, Ontario, Canada, K0G 1J0

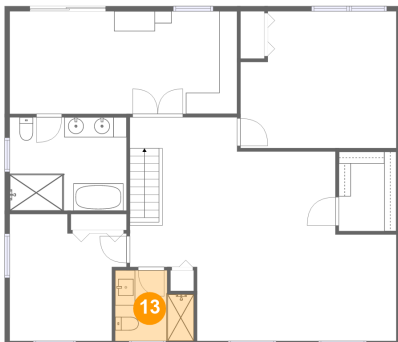
12 Floor 2 - Bedroom



Dimensions: 15'7" x 13'8"
Area: 198 sq. ft
Counted as living area: Yes

Heated: Yes
Finished: Yes
Enclosed: Yes
Contiguous: Yes
Permitted: Yes
Wet space: No
Addition: No
Conversion: No

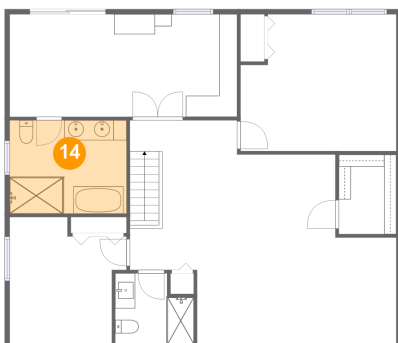
13 Floor 2 - Bath



Dimensions: 7'10" x 7'1"
Area: 49 sq. ft
Counted as living area: Yes

Heated: Yes
Finished: Yes
Enclosed: Yes
Contiguous: Yes
Permitted: Yes
Wet space: Yes
Addition: No
Conversion: No

14 Floor 2 - Primary Bath

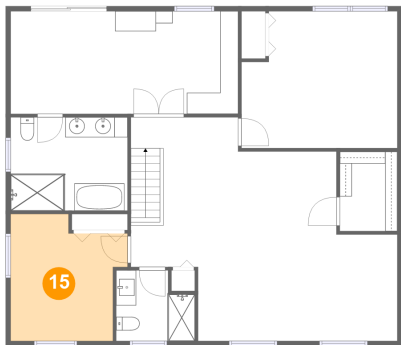


Dimensions: 11'8" x 9'4"
Area: 109 sq. ft
Counted as living area: Yes

Heated: Yes
Finished: Yes
Enclosed: Yes
Contiguous: Yes
Permitted: Yes
Wet space: Yes
Addition: No
Conversion: No

3826 McGahey Lane, Kemptville, United Counties of Leeds and
Grenville, Ontario, Canada, K0G 1J0

15 Floor 2 - Bedroom



Dimensions: 11'8" x 12'8"
Area: 125 sq. ft
Counted as living area: Yes

Heated: Yes
Finished: Yes
Enclosed: Yes
Contiguous: Yes
Permitted: Yes
Wet space: No
Addition: No
Conversion: No