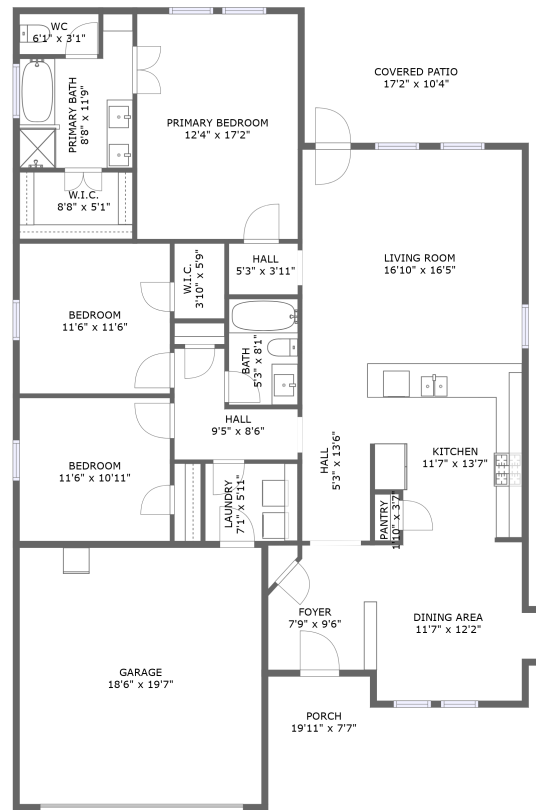


Home report


276 Everglade Drive, Buda, Hays County, Texas, United States, 78610



FLOOR 1

Property summary

 **1** Garages

 **3** Bedrooms

 **2** Bathrooms

 **0** Half baths

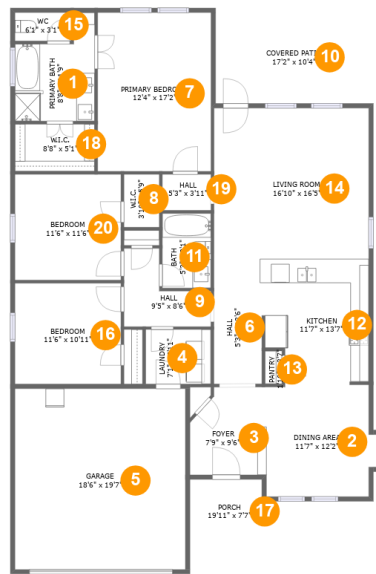
 **1** Floors

 **1,681** Gross living area sqft

 **2,375** Total sqft

Home report

276 Everglade Drive, Buda, Hays County, Texas, United States, 78610



Room dimensions

Floor 1

Total sqft: 2375 Living area: 1681

#		Dimensions	sqft	Counted as living area
1	Primary Bath	8'8" x 11'9"	80 sq. ft	Yes
2	Dining Area	11'7" x 12'2"	139 sq. ft	Yes
3	Foyer	7'9" x 9'6"	68 sq. ft	Yes
4	Laundry	7'1" x 5'11"	42 sq. ft	Yes
5	Garage	18'6" x 19'7"	363 sq. ft	No
6	Hall	5'3" x 13'6"	70 sq. ft	Yes
7	Primary Bedroom	12'4" x 17'2"	212 sq. ft	Yes
8	W.I.C.	3'10" x 5'9"	22 sq. ft	Yes
9	Hall	9'5" x 8'6"	54 sq. ft	Yes
10	Covered Patio	17'2" x 10'4"	178 sq. ft	No
11	Bath	5'3" x 8'1"	43 sq. ft	Yes

Home report

**276 Everglade Drive, Buda, Hays County, Texas, United States,
78610**

#		Dimensions	sqft	Counted as living area
12	Kitchen	11'7" x 13'7"	146 sq. ft	Yes
13	Pantry	1'10" x 3'7"	7 sq. ft	Yes
14	Living Room	16'10" x 16'5"	276 sq. ft	Yes
15	WC	6'1" x 3'1"	19 sq. ft	Yes
16	Bedroom	11'6" x 10'11"	126 sq. ft	Yes
17	Porch	19'11" x 7'7"	123 sq. ft	No
18	W.I.C.	8'8" x 5'1"	44 sq. ft	Yes
19	Hall	5'3" x 3'11"	21 sq. ft	Yes
20	Bedroom	11'6" x 11'6"	132 sq. ft	Yes

1 Floor 1 - Primary Bath



Dimensions: 8'8" x 11'9"
Area: 80 sq. ft
Counted as living area: Yes

Heated: Yes
Finished: Yes
Enclosed: Yes
Contiguous: Yes
Permitted: Yes
Wet space: Yes
Addition: No
Conversion: No

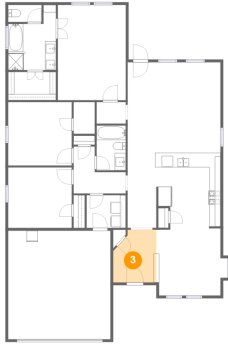
2 Floor 1 - Dining Area



Dimensions: 11'7" x 12'2"
Area: 139 sq. ft
Counted as living area: Yes

Heated: Yes
Finished: Yes
Enclosed: Yes
Contiguous: Yes
Permitted: Yes
Wet space: No
Addition: No
Conversion: No

3 Floor 1 - Foyer



Dimensions: 7'9" x 9'6"
Area: 68 sq. ft
Counted as living area: Yes

Heated: Yes
Finished: Yes
Enclosed: Yes
Contiguous: Yes
Permitted: Yes
Wet space: No
Addition: No
Conversion: No

4 Floor 1 - Laundry



Dimensions: 7'1" x 5'11"
Area: 42 sq. ft
Counted as living area: Yes

Heated: Yes
Finished: Yes
Enclosed: Yes
Contiguous: Yes
Permitted: Yes
Wet space: No
Addition: No
Conversion: No

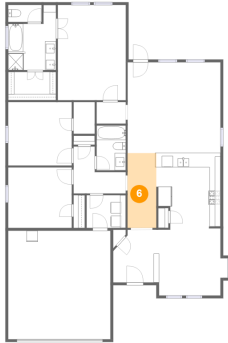
5 Floor 1 - Garage



Dimensions: 18'6" x 19'7"
Area: 363 sq. ft
Counted as living area: No

Heated: No
Finished: No
Enclosed: Yes
Contiguous: Yes
Permitted: Yes
Wet space: No
Addition: No
Conversion: No

6 Floor 1 - Hall



Dimensions: 5'3" x 13'6"
Area: 70 sq. ft
Counted as living area: Yes

Heated: Yes
Finished: Yes
Enclosed: Yes
Contiguous: Yes
Permitted: Yes
Wet space: No
Addition: No
Conversion: No

7 Floor 1 - Primary Bedroom



Dimensions: 12'4" x 17'2"
Area: 212 sq. ft
Counted as living area: Yes

Heated: Yes
Finished: Yes
Enclosed: Yes
Contiguous: Yes
Permitted: Yes
Wet space: No
Addition: No
Conversion: No

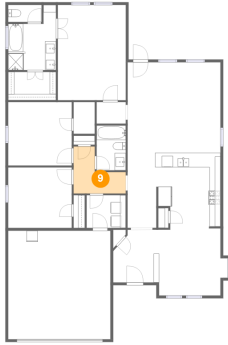
8 Floor 1 - W.I.C.



Dimensions: 3'10" x 5'9"
Area: 22 sq. ft
Counted as living area: Yes

Heated: Yes
Finished: Yes
Enclosed: Yes
Contiguous: Yes
Permitted: Yes
Wet space: No
Addition: No
Conversion: No

9 Floor 1 - Hall



Dimensions: 9'5" x 8'6"
Area: 54 sq. ft
Counted as living area: Yes

Heated: Yes
Finished: Yes
Enclosed: Yes
Contiguous: Yes
Permitted: Yes
Wet space: No
Addition: No
Conversion: No

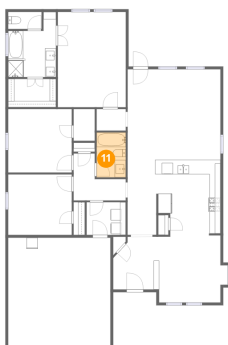
10 Floor 1 - Covered Patio



Dimensions: 17'2" x 10'4"
Area: 178 sq. ft
Counted as living area: No

Heated: No
Finished: Yes
Enclosed: No
Contiguous: Yes
Permitted: Yes
Wet space: No
Addition: No
Conversion: No

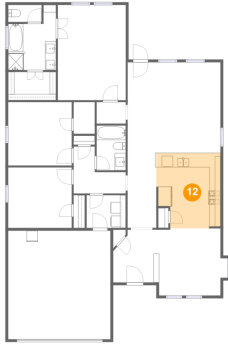
11 Floor 1 - Bath



Dimensions: 5'3" x 8'1"
Area: 43 sq. ft
Counted as living area: Yes

Heated: Yes
Finished: Yes
Enclosed: Yes
Contiguous: Yes
Permitted: Yes
Wet space: Yes
Addition: No
Conversion: No

12 Floor 1 - Kitchen



Dimensions: 11'7" x 13'7"
Area: 146 sq. ft
Counted as living area: Yes

Heated: Yes
Finished: Yes
Enclosed: Yes
Contiguous: Yes
Permitted: Yes
Wet space: No
Addition: No
Conversion: No

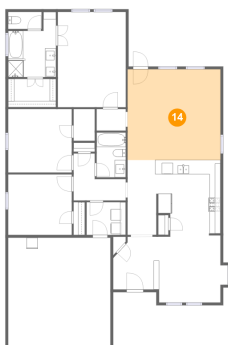
13 Floor 1 - Pantry



Dimensions: 1'10" x 3'7"
Area: 7 sq. ft
Counted as living area: Yes

Heated: Yes
Finished: Yes
Enclosed: Yes
Contiguous: Yes
Permitted: Yes
Wet space: No
Addition: No
Conversion: No

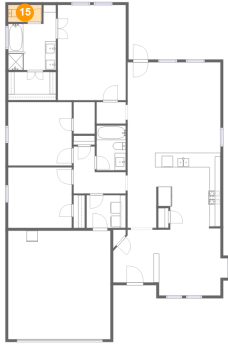
14 Floor 1 - Living Room



Dimensions: 16'10" x 16'5"
Area: 276 sq. ft
Counted as living area: Yes

Heated: Yes
Finished: Yes
Enclosed: Yes
Contiguous: Yes
Permitted: Yes
Wet space: No
Addition: No
Conversion: No

15 Floor 1 - WC



Dimensions: 6'1" x 3'1"
Area: 19 sq. ft
Counted as living area: Yes

Heated: Yes
Finished: Yes
Enclosed: Yes
Contiguous: Yes
Permitted: Yes
Wet space: Yes
Addition: No
Conversion: No

16 Floor 1 - Bedroom



Dimensions: 11'6" x 10'11"
Area: 126 sq. ft
Counted as living area: Yes

Heated: Yes
Finished: Yes
Enclosed: Yes
Contiguous: Yes
Permitted: Yes
Wet space: No
Addition: No
Conversion: No

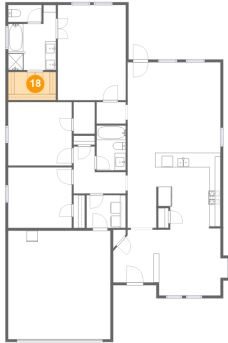
17 Floor 1 - Porch



Dimensions: 19'11" x 7'7"
Area: 123 sq. ft
Counted as living area: No

Heated: No
Finished: Yes
Enclosed: No
Contiguous: Yes
Permitted: Yes
Wet space: No
Addition: No
Conversion: No

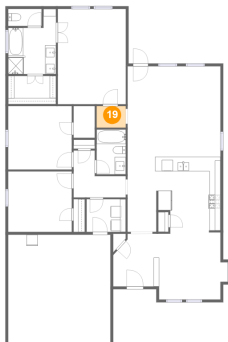
18 Floor 1 - W.I.C.



Dimensions: 8'8" x 5'1"
Area: 44 sq. ft
Counted as living area: Yes

Heated: Yes
Finished: Yes
Enclosed: Yes
Contiguous: Yes
Permitted: Yes
Wet space: No
Addition: No
Conversion: No

19 Floor 1 - Hall



Dimensions: 5'3" x 3'11"
Area: 21 sq. ft
Counted as living area: Yes

Heated: Yes
Finished: Yes
Enclosed: Yes
Contiguous: Yes
Permitted: Yes
Wet space: No
Addition: No
Conversion: No

20 Floor 1 - Bedroom



Dimensions: 11'6" x 11'6"
Area: 132 sq. ft
Counted as living area: Yes

Heated: Yes
Finished: Yes
Enclosed: Yes
Contiguous: Yes
Permitted: Yes
Wet space: No
Addition: No
Conversion: No