

Garage
19'5" x 28'2"

Basement
23'2" x 28'2"

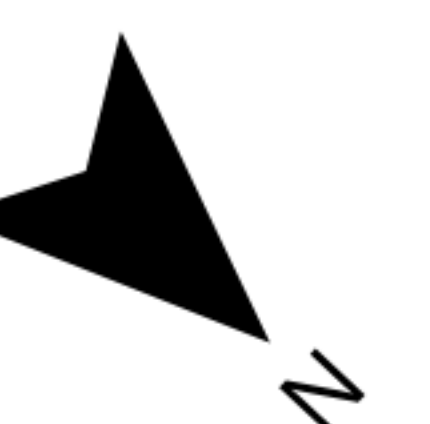
TOTAL: 2438 sq. ft

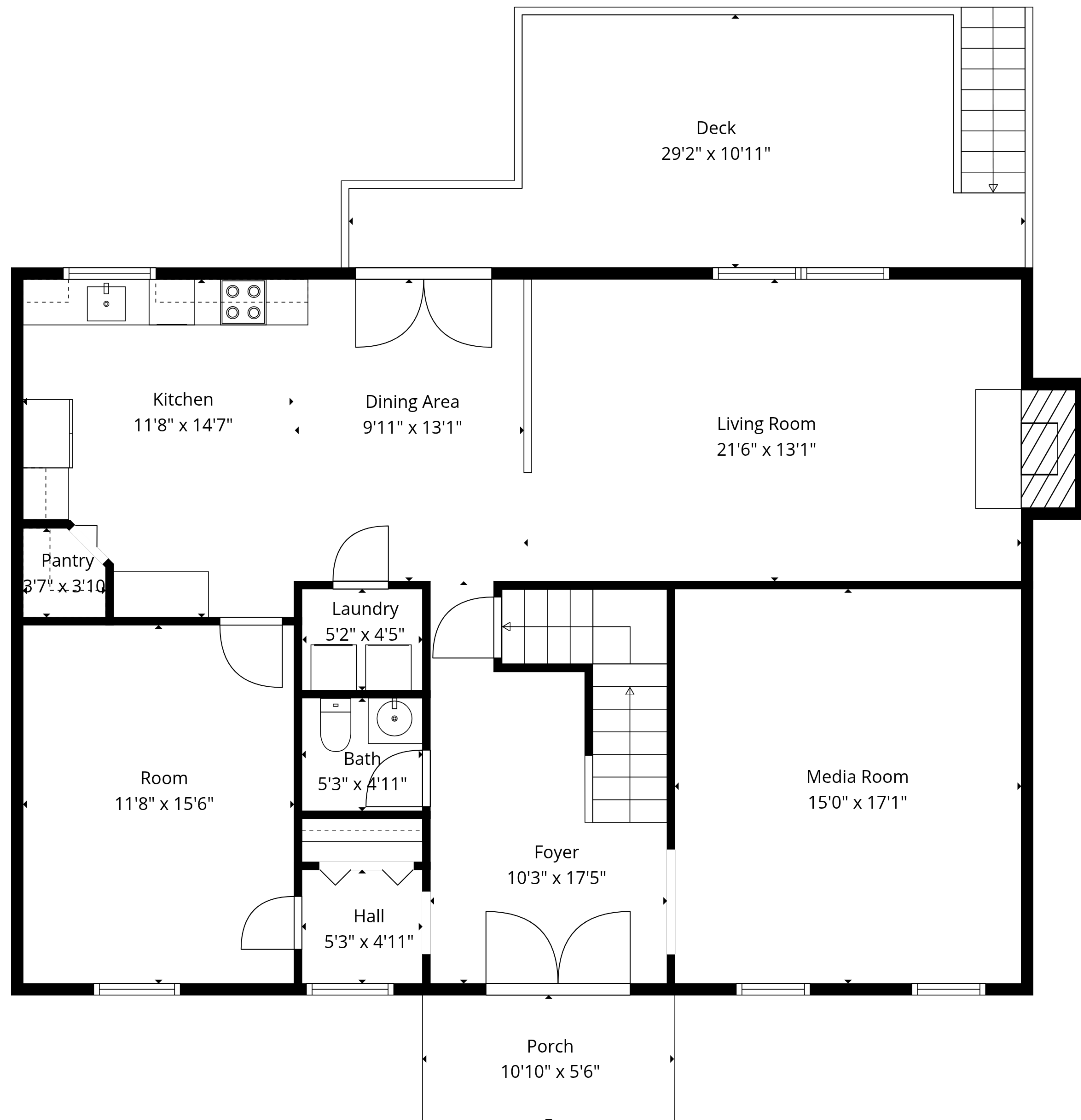
BELOW GRADE: 0 sq. ft, FLOOR 2: 1314 sq. ft, FLOOR 3: 1124 sq. ft

EXCLUDED AREAS: GARAGE: 548 sq. ft, BASEMENT: 652 sq. ft, DECK: 261 sq. ft,

PORCH: 60 sq. ft, FIREPLACE: 14 sq. ft, OPEN TO BELOW: 90 sq. ft,

WALLS: 231 sq. ft

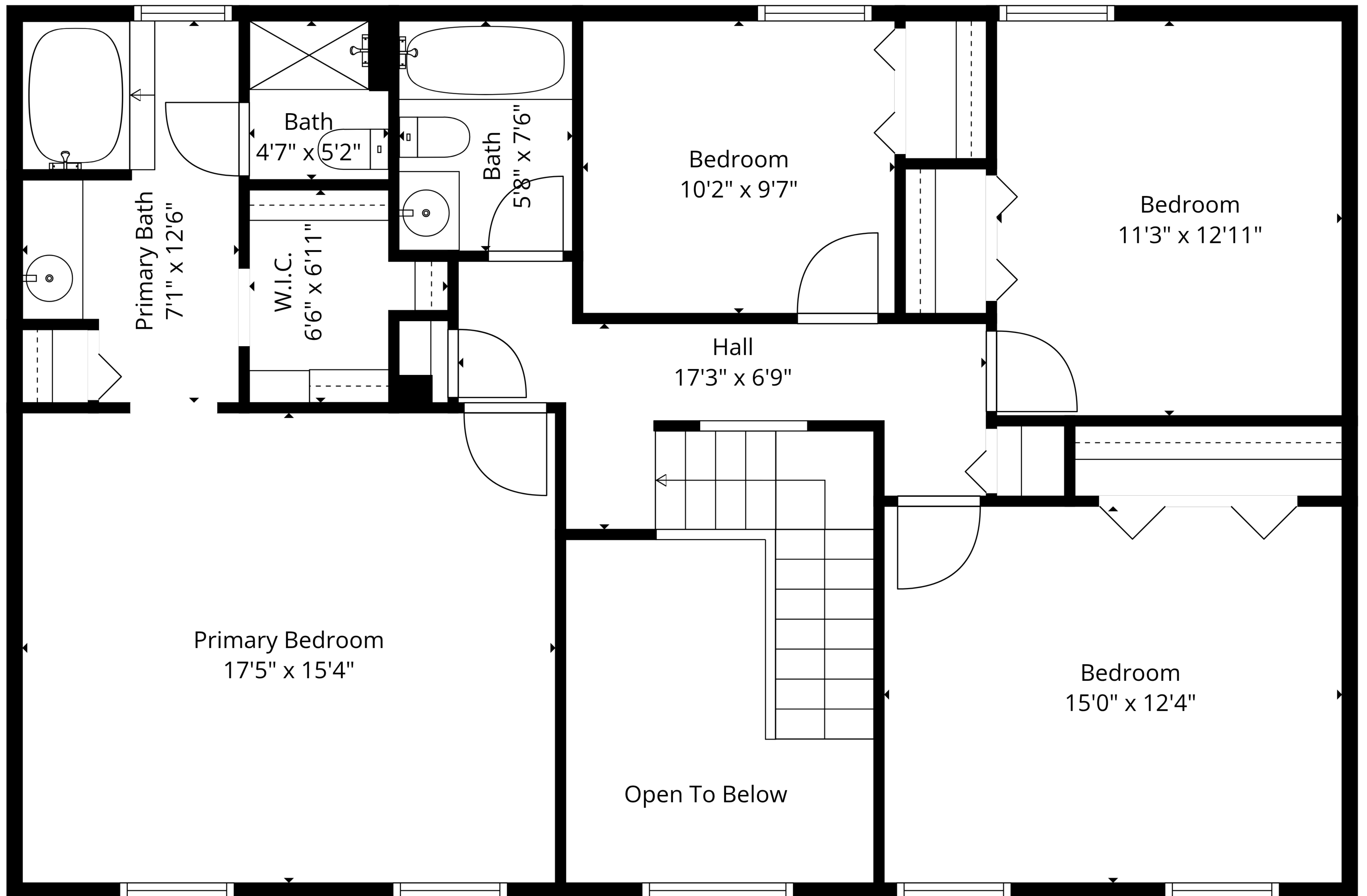




TOTAL: 2438 sq. ft

BELOW GRADE: 0 sq. ft, FLOOR 2: 1314 sq. ft, FLOOR 3: 1124 sq. ft
EXCLUDED AREAS: GARAGE: 548 sq. ft, BASEMENT: 652 sq. ft, DECK: 261 sq. ft,
PORCH: 60 sq. ft, FIREPLACE: 14 sq. ft, OPEN TO BELOW: 90 sq. ft,
WALLS: 231 sq. ft

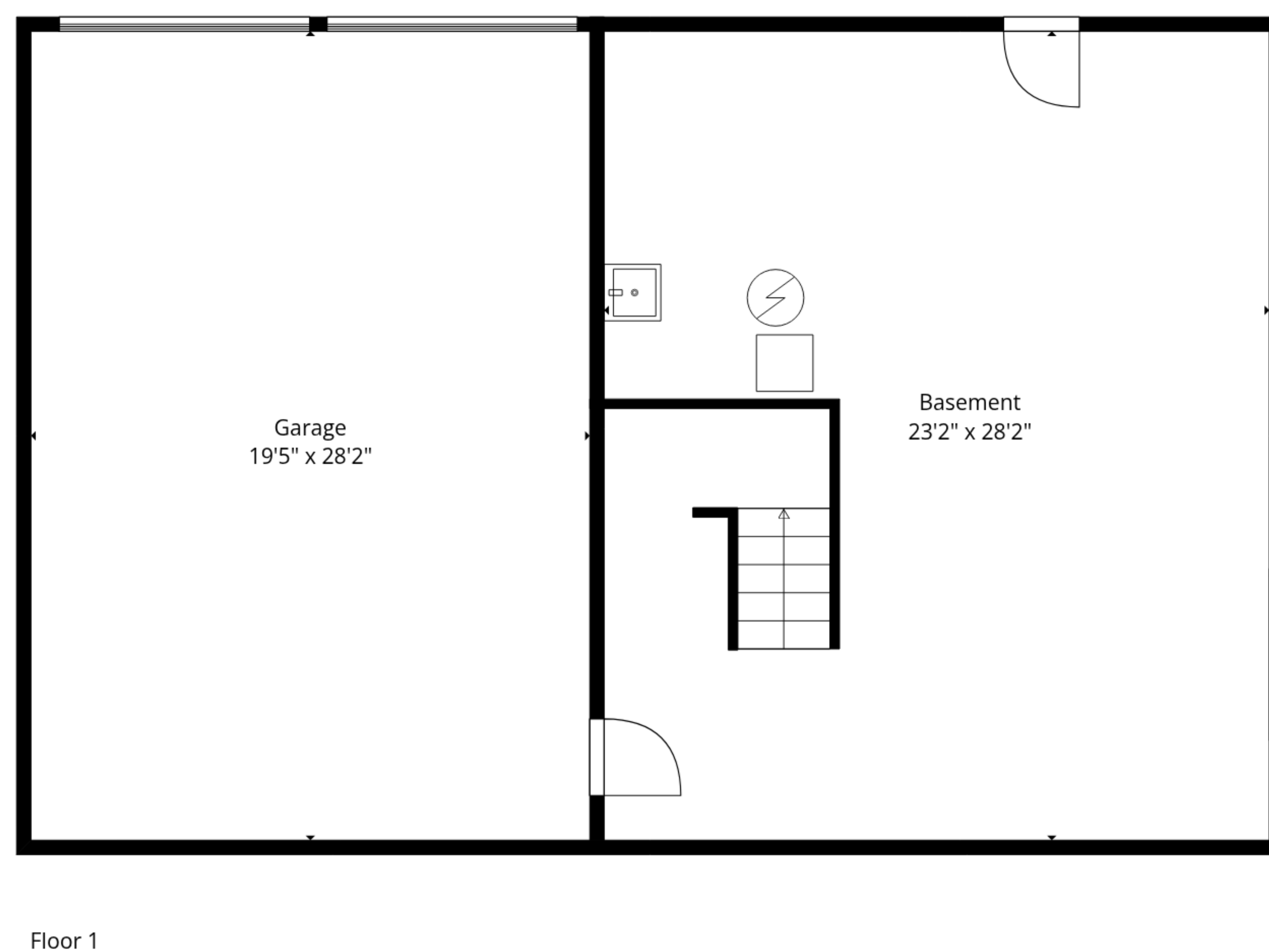
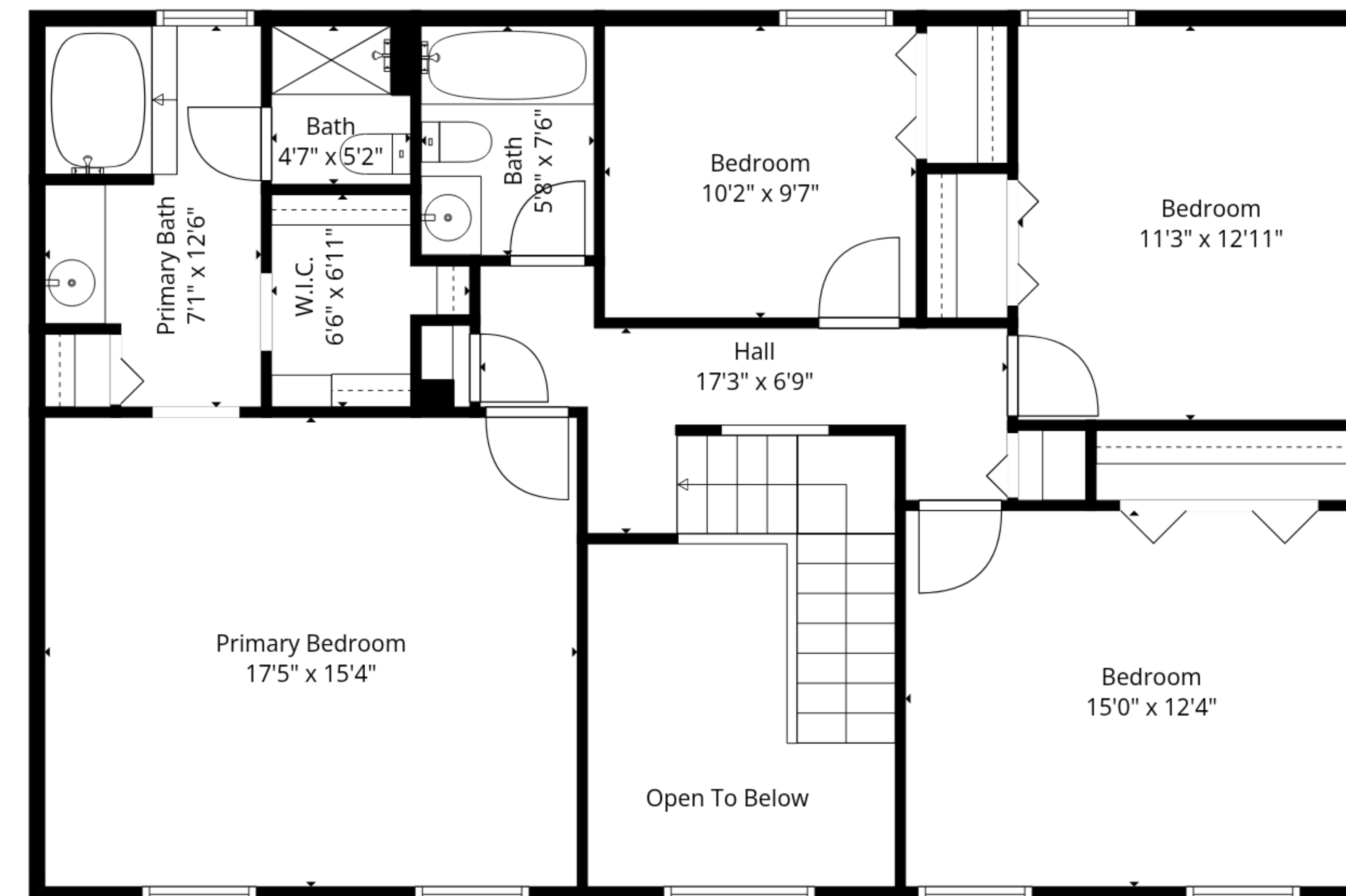
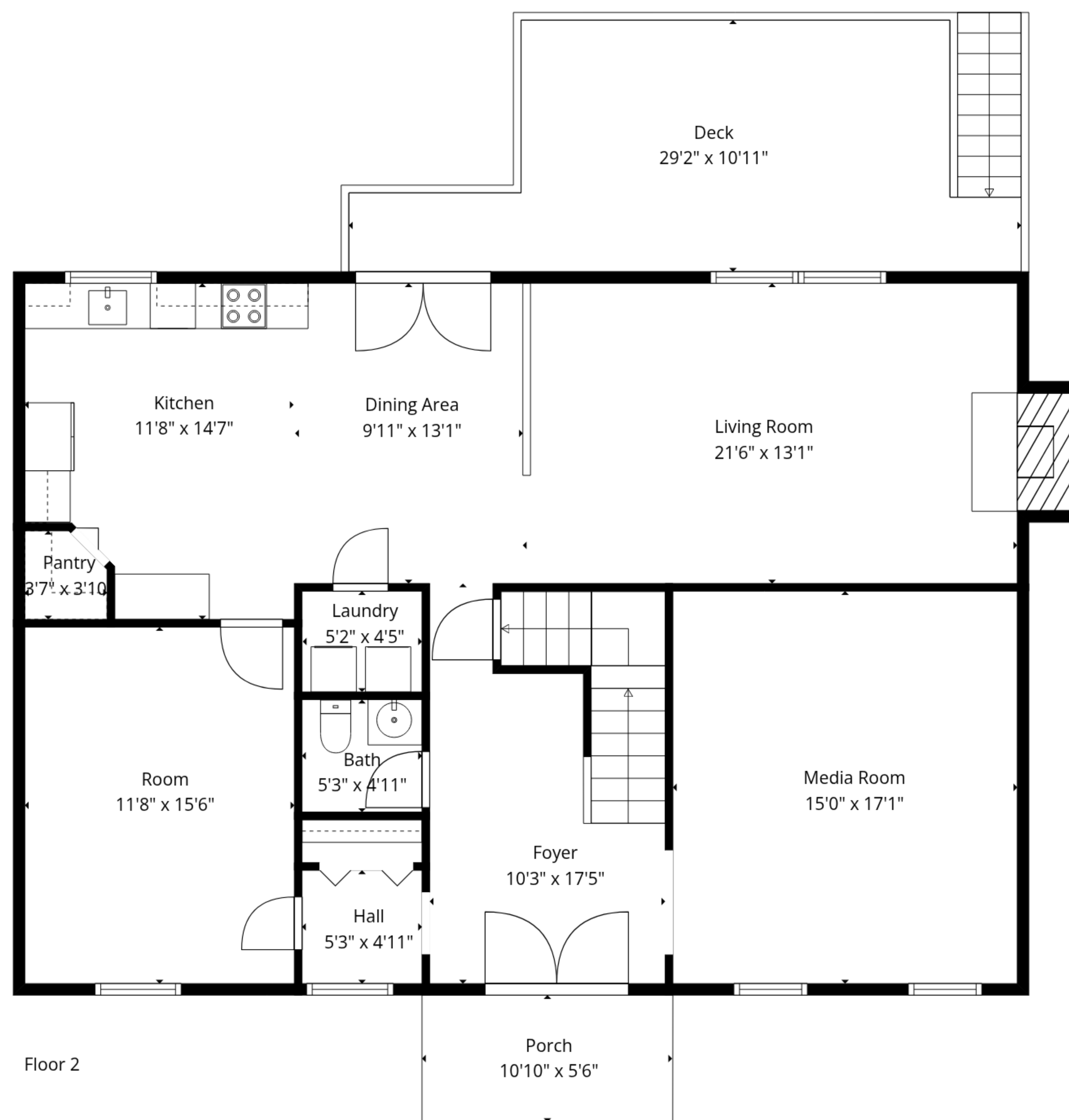




TOTAL: 2438 sq. ft

BELOW GRADE: 0 sq. ft, FLOOR 2: 1314 sq. ft, FLOOR 3: 1124 sq. ft
EXCLUDED AREAS: GARAGE: 548 sq. ft, BASEMENT: 652 sq. ft, DECK: 261 sq. ft,
PORCH: 60 sq. ft, FIREPLACE: 14 sq. ft, OPEN TO BELOW: 90 sq. ft,
WALLS: 231 sq. ft





TOTAL: 2438 sq. ft
 BELOW GRADE: 0 sq. ft, FLOOR 2: 1314 sq. ft, FLOOR 3: 1124 sq. ft
 EXCLUDED AREAS: GARAGE: 548 sq. ft, BASEMENT: 652 sq. ft, DECK: 261 sq. ft,
 PORCH: 60 sq. ft, FIREPLACE: 14 sq. ft, OPEN TO BELOW: 90 sq. ft,
 WALLS: 231 sq. ft

