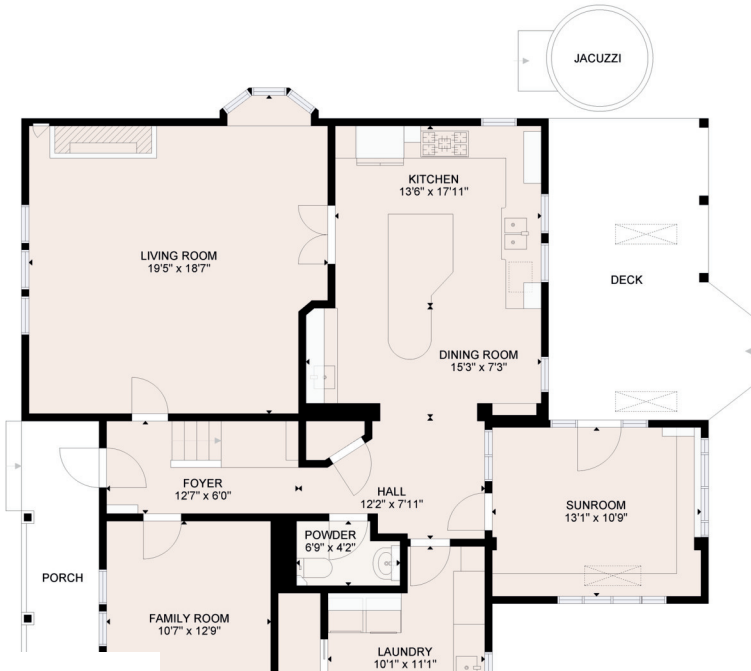
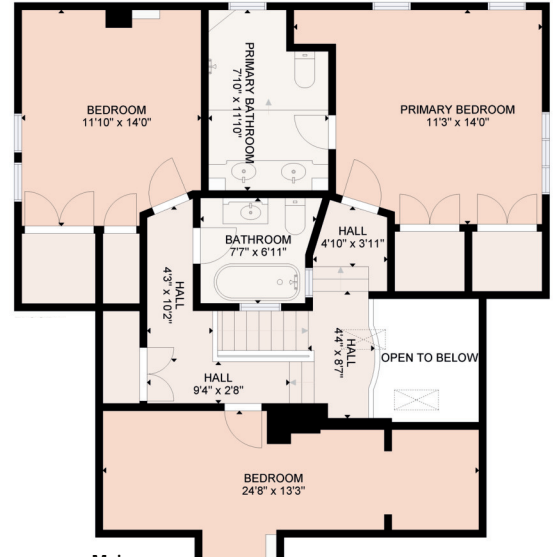


34884 Clayburn Road



Below



Main

Gross Internal Area

Below 1395 sq.ft

Main 947 sq.ft

Total 2342 sq.ft

Porch 96 sq.ft

Deck 229 sq.ft

Exterior Suite 486

*** E&O Insured. For advertising purposes only. Not intended for architectural or construction use. Floorplan and measurements are approximate within +/- 2% tolerance.