

Basement  
51'10" x 28'2"

Storage  
12'4" x 8'8"

**TOTAL: 2367 sq. ft**

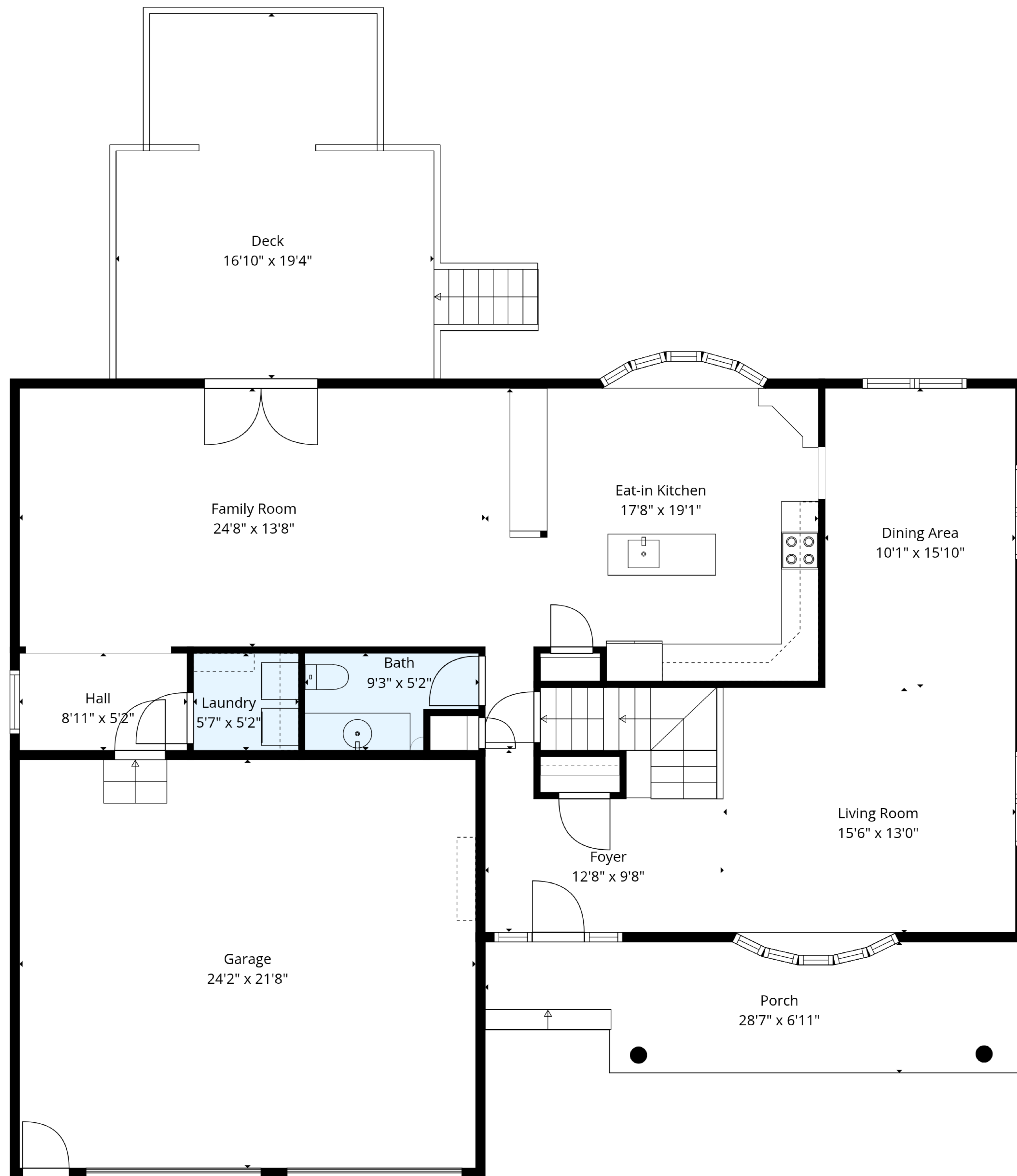
Basement: 0 sq. ft, 1st floor: 1299 sq. ft, 2nd floor: 1068 sq. ft

EXCLUDED AREAS: STORAGE: 226 sq. ft, BASEMENT: 1108 sq. ft, UNDEFINED: 17 sq. ft,

GARAGE: 523 sq. ft, PORCH: 176 sq. ft, DECK: 305 sq. ft,

LOW CEILING: 34 sq. ft, OPEN TO BELOW: 310 sq. ft, WALLS: 290 sq. ft





**TOTAL: 2367 sq. ft**

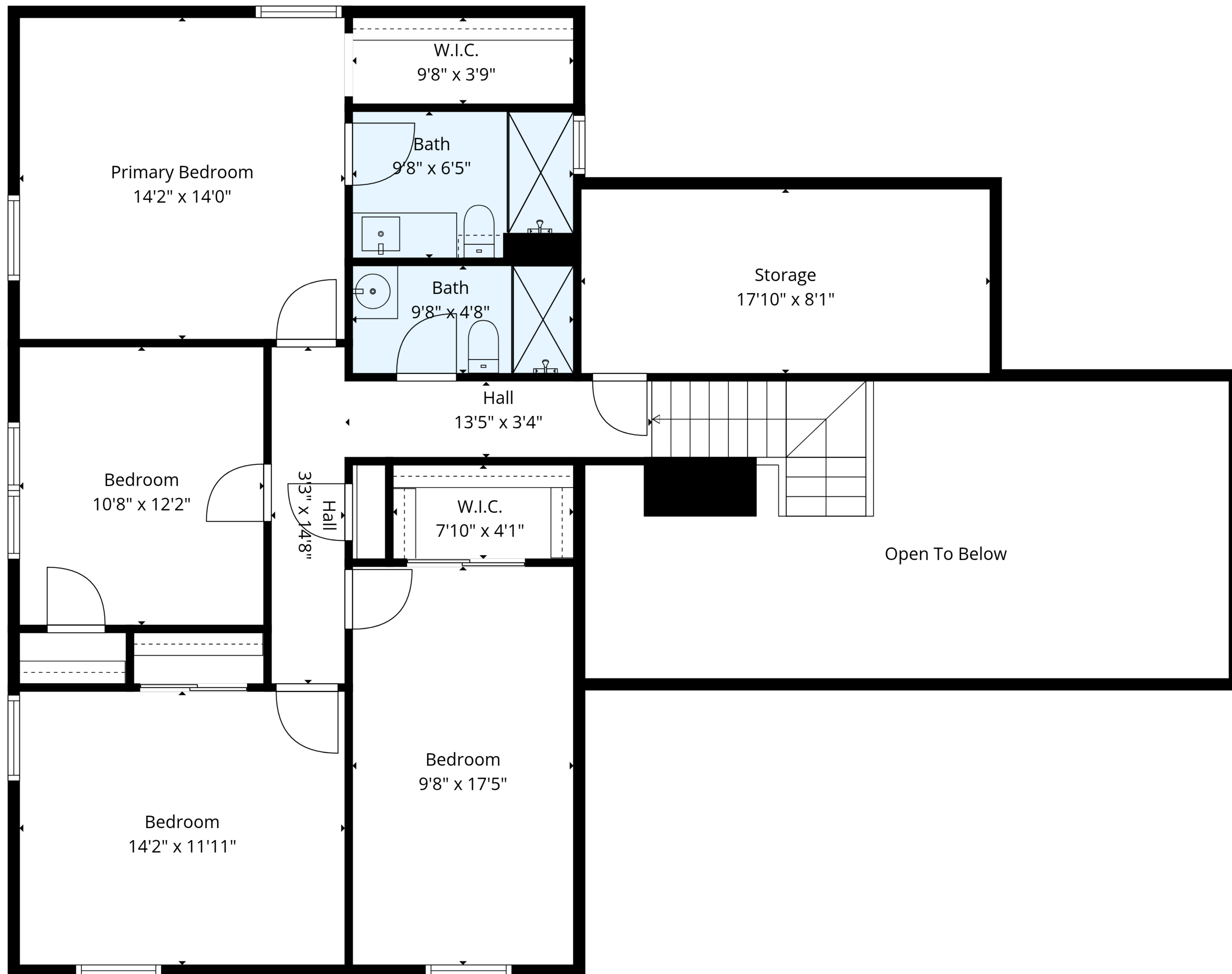
Basement: 0 sq. ft, 1st floor: 1299 sq. ft, 2nd floor: 1068 sq. ft

EXCLUDED AREAS: STORAGE: 226 sq. ft, BASEMENT: 1108 sq. ft, UNDEFINED: 17 sq. ft,

GARAGE: 523 sq. ft, PORCH: 176 sq. ft, DECK: 305 sq. ft,

LOW CEILING: 34 sq. ft, OPEN TO BELOW: 310 sq. ft, WALLS: 290 sq. ft





**TOTAL: 2367 sq. ft**

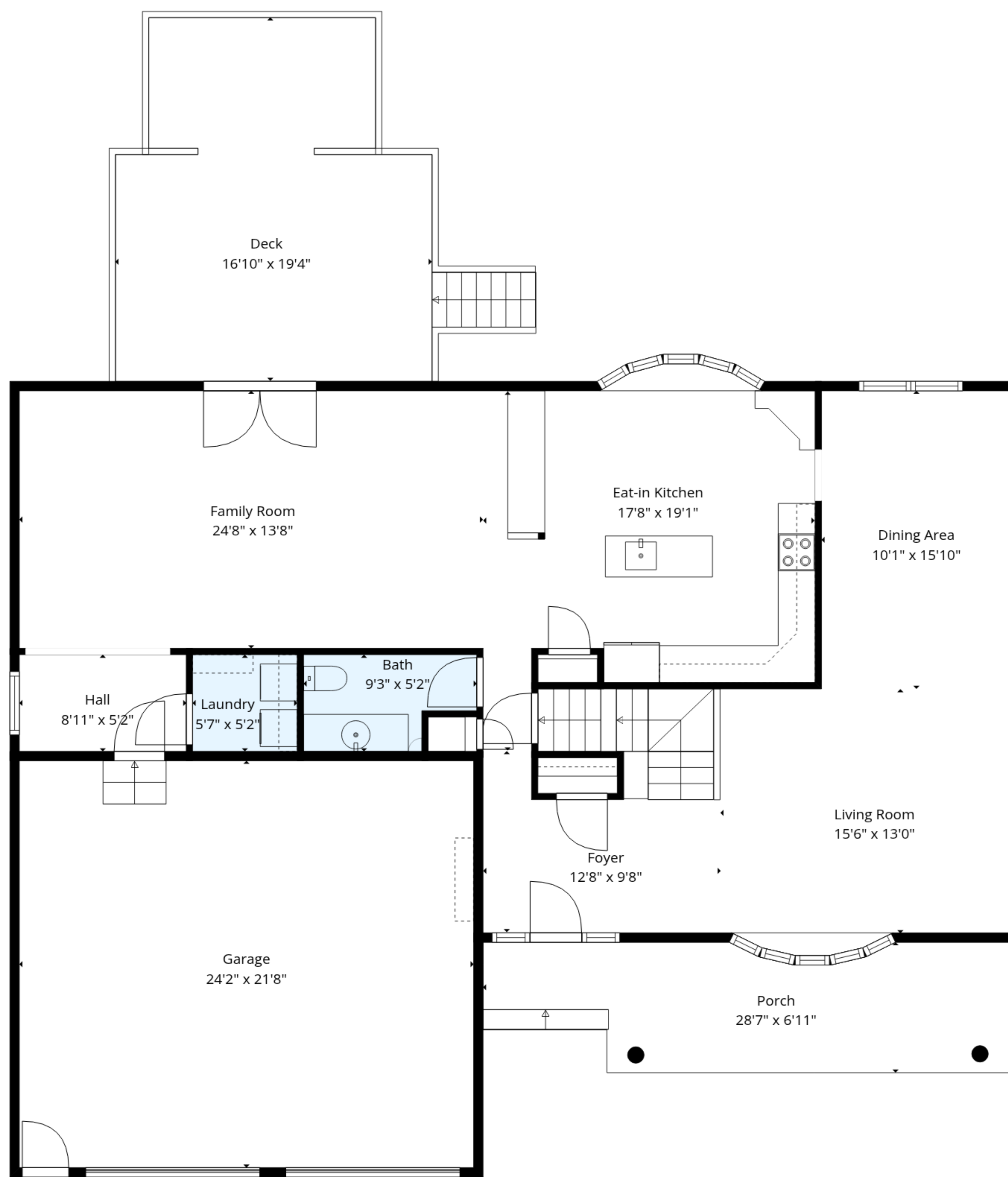
Basement: 0 sq. ft, 1st floor: 1299 sq. ft, 2nd floor: 1068 sq. ft

EXCLUDED AREAS: STORAGE: 226 sq. ft, BASEMENT: 1108 sq. ft, UNDEFINED: 17 sq. ft,

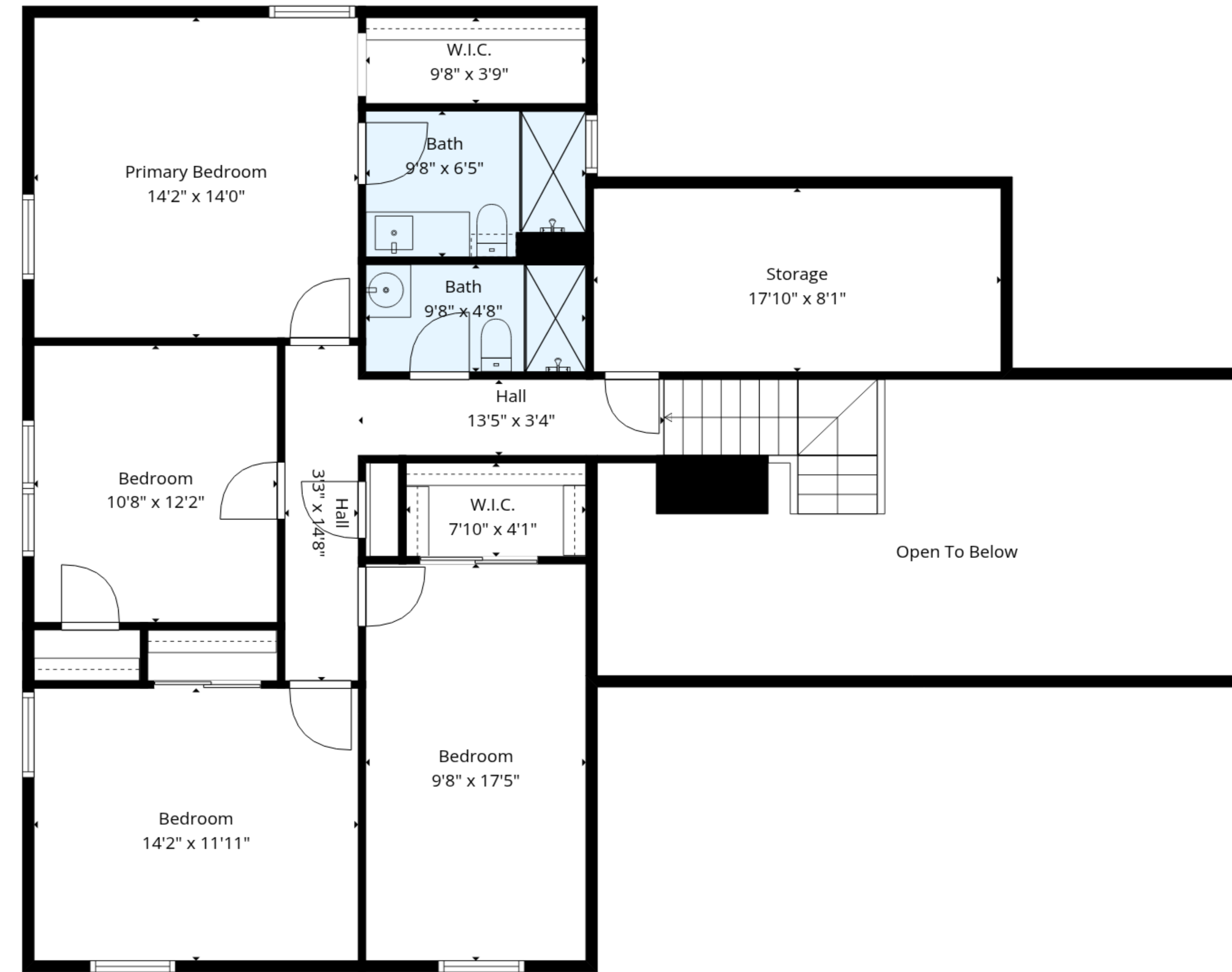
GARAGE: 523 sq. ft, PORCH: 176 sq. ft, DECK: 305 sq. ft,

LOW CEILING: 34 sq. ft, OPEN TO BELOW: 310 sq. ft, WALLS: 290 sq. ft

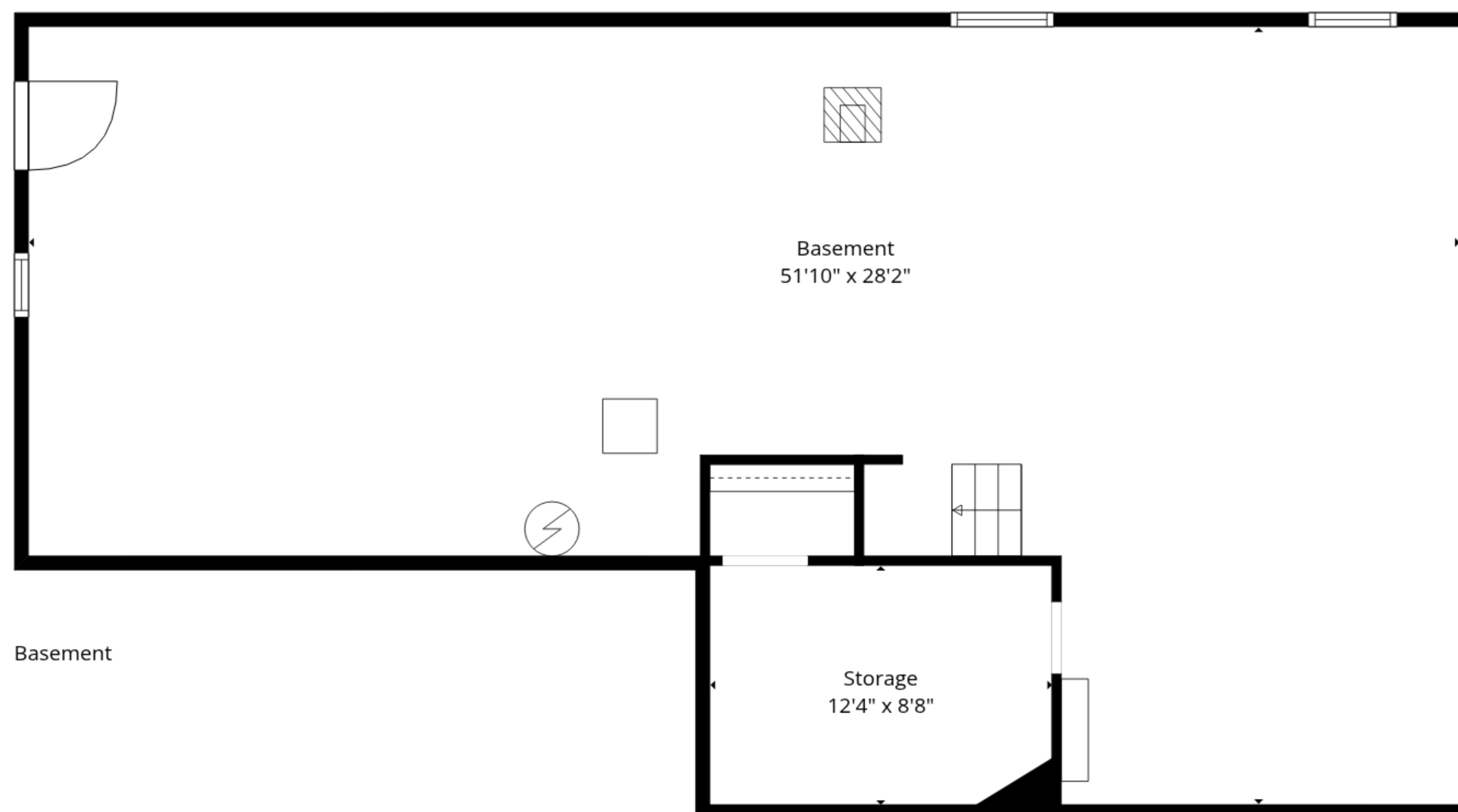




1st Floor



2nd Floor



Basement

**TOTAL: 2367 sq. ft**

Basement: 0 sq. ft, 1st floor: 1299 sq. ft, 2nd floor: 1068 sq. ft

EXCLUDED AREAS: STORAGE: 226 sq. ft, BASEMENT: 1108 sq. ft, UNDEFINED: 17 sq. ft,

GARAGE: 523 sq. ft, PORCH: 176 sq. ft, DECK: 305 sq. ft,

LOW CEILING: 34 sq. ft, OPEN TO BELOW: 310 sq. ft, WALLS: 290 sq. ft

