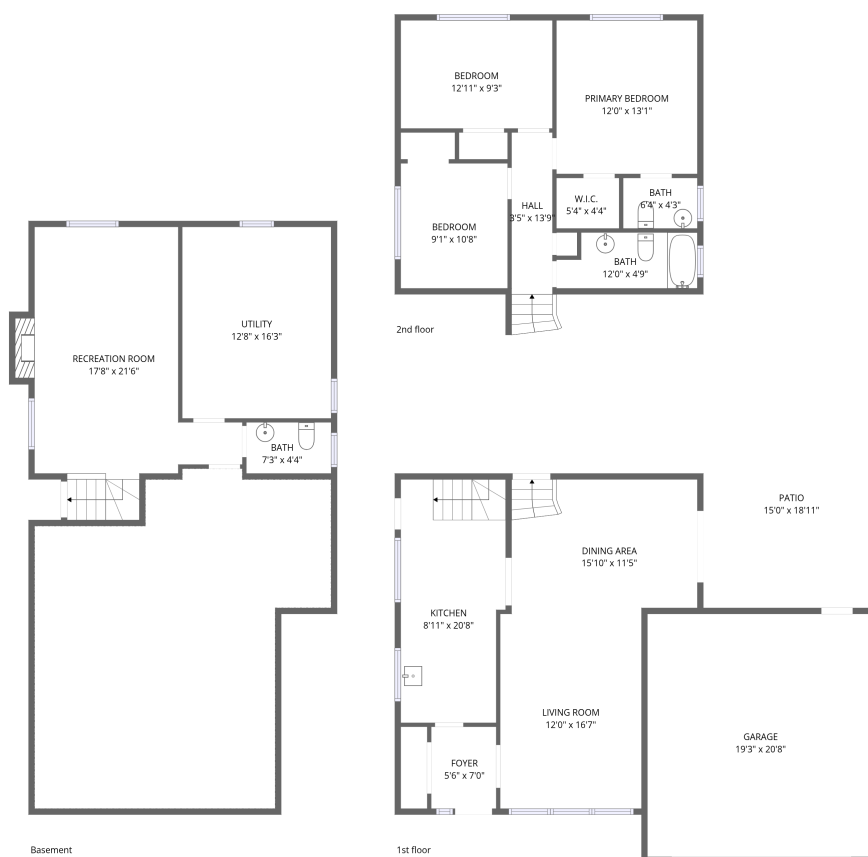


Home data report

2651 Thorn Lodge Drive, Sheridan, Mississauga, Peel County, Ontario, Canada, L5K 1L1



Total Area: 1320 sq. ft

Basement: 380 sq. ft, 1st Floor: 681 sq. ft, 2nd Floor: 639 sq. ft


Excluded: Low ceiling 635 sq. ft, Utility 222 sq. ft, Fireplace 10 sq. ft, Garage 429 sq. ft, Patio 285 sq. ft

Property summary



Home data report

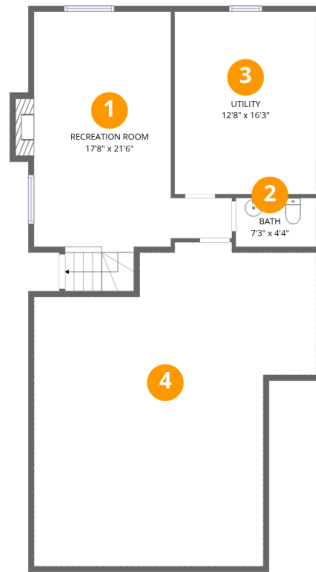
**2651 Thorn Lodge Drive, Sheridan, Mississauga, Peel County,
Ontario, Canada, L5K 1L1**

 **2**
Half baths

 **1**
Garages

Home data report

2651 Thorn Lodge Drive, Sheridan, Mississauga, Peel County, Ontario, Canada, L5K 1L1



Room dimensions

Floor 1 Below grade

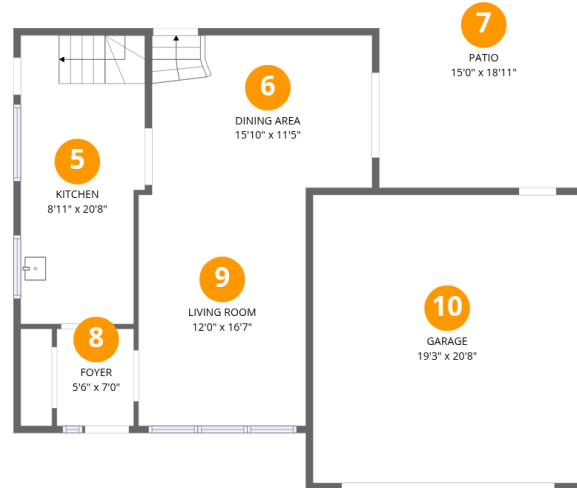
Total:380sqft

Excluded: 867sqft

#		Dimensions	sqft	Counted as living area
1	Recreation Room	17'8" x 21'6"	310 sq. ft	Yes
2	Bath	7'3" x 4'4"	31 sq. ft	Yes
3	Utility	12'8" x 16'3"	207 sq. ft	No
4	Crawl Space	25'3" x 29'0"	594 sq. ft	No

Home data report

2651 Thorn Lodge Drive, Sheridan, Mississauga, Peel County, Ontario, Canada, L5K 1L1



Room dimensions

Floor 2

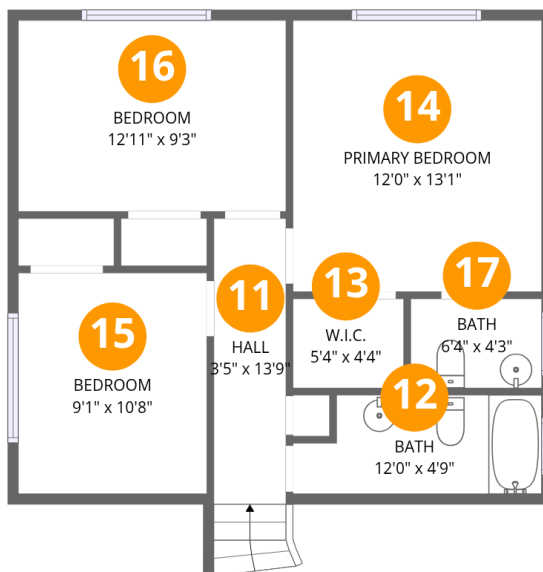
Total:681sqft

Excluded: 714sqft

#		Dimensions	sqft	Counted as living area
5	Kitchen	8'11" x 20'8"	177 sq. ft	Yes
6	Dining Area	15'10" x 11'5"	179 sq. ft	Yes
7	Patio	15'0" x 18'11"	285 sq. ft	No
8	Foyer	5'6" x 7'0"	39 sq. ft	Yes
9	Living Room	12'0" x 16'7"	200 sq. ft	Yes
10	Garage	19'3" x 20'8"	399 sq. ft	No

Home data report

2651 Thorn Lodge Drive, Sheridan, Mississauga, Peel County, Ontario, Canada, L5K 1L1



Room dimensions

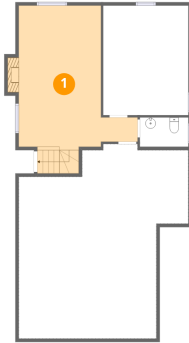
Floor 3

Total:639sqft Excluded: 0sqft

#		Dimensions	sqft	Counted as living area
11	Hall	3'5" x 13'9"	60 sq. ft	Yes
12	Bath	12'0" x 4'9"	52 sq. ft	Yes
13	W.I.C.	5'4" x 4'4"	23 sq. ft	Yes
14	Primary Bedroom	12'0" x 13'1"	157 sq. ft	Yes
15	Bedroom	9'1" x 10'8"	97 sq. ft	Yes
16	Bedroom	12'11" x 9'3"	119 sq. ft	Yes
17	Bath	6'4" x 4'3"	27 sq. ft	Yes

2651 Thorn Lodge Drive, Sheridan, Mississauga, Peel County,
Ontario, Canada, L5K 1L1

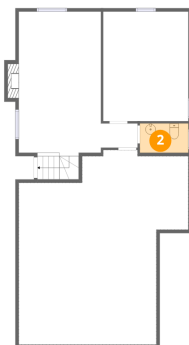
1 Floor 1 - Recreation Room



Dimensions: 17'8" x 21'6"
Area: 310 sq. ft
Counted as living area: Yes

Heated: Yes
Finished: Yes
Enclosed: Yes
Contiguous: Yes
Permitted: Yes
Wet space: No
Addition: No
Conversion: No

2 Floor 1 - Bath

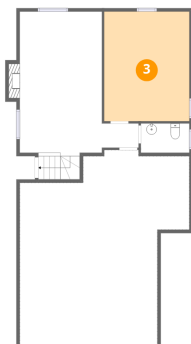


Dimensions: 7'3" x 4'4"
Area: 31 sq. ft
Counted as living area: Yes

Heated: Yes
Finished: Yes
Enclosed: Yes
Contiguous: Yes
Permitted: Yes
Wet space: Yes
Addition: No
Conversion: No

2651 Thorn Lodge Drive, Sheridan, Mississauga, Peel County, Ontario, Canada, L5K 1L1

3 Floor 1 - Utility



Dimensions: 12'8" x 16'3"
Area: 207 sq. ft
Counted as living area: No

Heated: Yes
Finished: No
Enclosed: Yes
Contiguous: Yes
Permitted: Yes
Wet space: No
Addition: No
Conversion: No

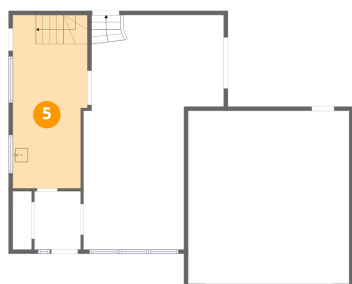
4 Floor 1 - Crawl Space



Dimensions: 25'3" x 29'0"
Area: 594 sq. ft
Counted as living area: No

Heated: No
Finished: No
Enclosed: No
Contiguous: Yes
Permitted: No
Wet space: No
Addition: No
Conversion: No

5 Floor 2 - Kitchen

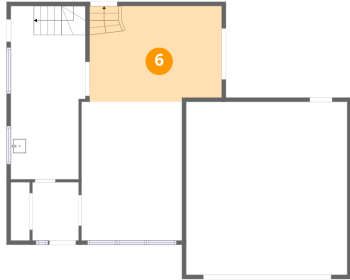


Dimensions: 8'11" x 20'8"
Area: 177 sq. ft
Counted as living area: Yes

Heated: Yes
Finished: Yes
Enclosed: Yes
Contiguous: Yes
Permitted: Yes
Wet space: No
Addition: No
Conversion: No

2651 Thorn Lodge Drive, Sheridan, Mississauga, Peel County, Ontario, Canada, L5K 1L1

6 Floor 2 - Dining Area



Dimensions: 15'10" x 11'5"
Area: 179 sq. ft
Counted as living area: Yes

Heated: Yes
Finished: Yes
Enclosed: Yes
Contiguous: Yes
Permitted: Yes
Wet space: No
Addition: No
Conversion: No

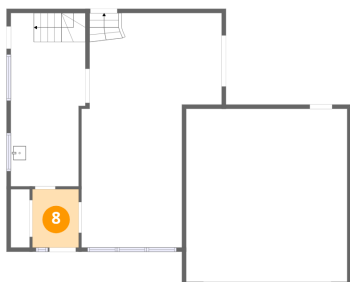
7 Floor 2 - Patio



Dimensions: 15'0" x 18'11"
Area: 285 sq. ft
Counted as living area: No

Heated: No
Finished: No
Enclosed: No
Contiguous: Yes
Permitted: Yes
Wet space: No
Addition: No
Conversion: No

8 Floor 2 - Foyer

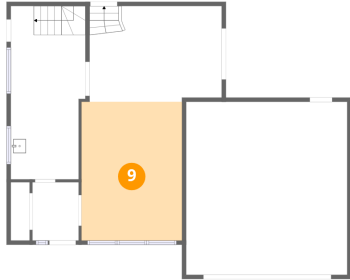


Dimensions: 5'6" x 7'0"
Area: 39 sq. ft
Counted as living area: Yes

Heated: Yes
Finished: Yes
Enclosed: Yes
Contiguous: Yes
Permitted: Yes
Wet space: No
Addition: No
Conversion: No

2651 Thorn Lodge Drive, Sheridan, Mississauga, Peel County,
Ontario, Canada, L5K 1L1

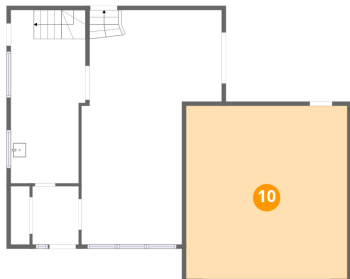
9 Floor 2 - Living Room



Dimensions: 12'0" x 16'7"
Area: 200 sq. ft
Counted as living area: Yes

Heated: Yes
Finished: Yes
Enclosed: Yes
Contiguous: Yes
Permitted: Yes
Wet space: No
Addition: No
Conversion: No

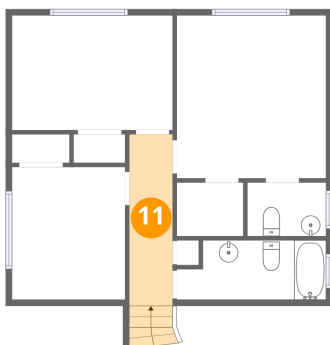
10 Floor 2 - Garage



Dimensions: 19'3" x 20'8"
Area: 399 sq. ft
Counted as living area: No

Heated: No
Finished: No
Enclosed: Yes
Contiguous: Yes
Permitted: Yes
Wet space: No
Addition: No
Conversion: No

11 Floor 3 - Hall

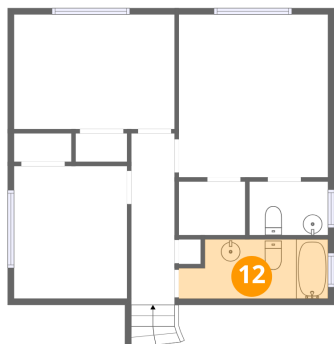


Dimensions: 3'5" x 13'9"
Area: 60 sq. ft
Counted as living area: Yes

Heated: Yes
Finished: Yes
Enclosed: Yes
Contiguous: Yes
Permitted: Yes
Wet space: No
Addition: No
Conversion: No

2651 Thorn Lodge Drive, Sheridan, Mississauga, Peel County, Ontario, Canada, L5K 1L1

12 Floor 3 - Bath



Dimensions: 12'0" x 4'9"
Area: 52 sq. ft
Counted as living area: Yes

Heated: Yes
Finished: Yes
Enclosed: Yes
Contiguous: Yes
Permitted: Yes
Wet space: Yes
Addition: No
Conversion: No

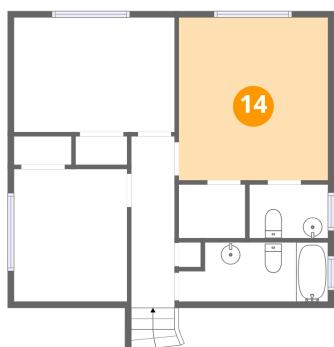
13 Floor 3 - W.I.C.



Dimensions: 5'4" x 4'4"
Area: 23 sq. ft
Counted as living area: Yes

Heated: Yes
Finished: Yes
Enclosed: Yes
Contiguous: Yes
Permitted: Yes
Wet space: No
Addition: No
Conversion: No

14 Floor 3 - Primary Bedroom

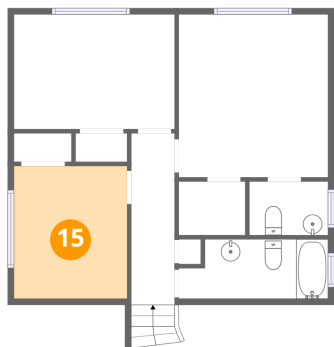


Dimensions: 12'0" x 13'1"
Area: 157 sq. ft
Counted as living area: Yes

Heated: Yes
Finished: Yes
Enclosed: Yes
Contiguous: Yes
Permitted: Yes
Wet space: No
Addition: No
Conversion: No

2651 Thorn Lodge Drive, Sheridan, Mississauga, Peel County, Ontario, Canada, L5K 1L1

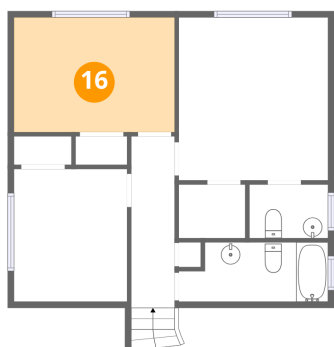
15 Floor 3 - Bedroom



Dimensions: 9'1" x 10'8"
Area: 97 sq. ft
Counted as living area: Yes

Heated: Yes
Finished: Yes
Enclosed: Yes
Contiguous: Yes
Permitted: Yes
Wet space: No
Addition: No
Conversion: No

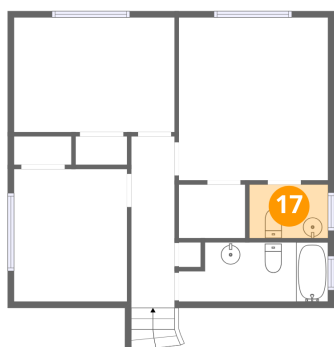
16 Floor 3 - Bedroom



Dimensions: 12'11" x 9'3"
Area: 119 sq. ft
Counted as living area: Yes

Heated: Yes
Finished: Yes
Enclosed: Yes
Contiguous: Yes
Permitted: Yes
Wet space: No
Addition: No
Conversion: No

17 Floor 3 - Bath



Dimensions: 6'4" x 4'3"
Area: 27 sq. ft
Counted as living area: Yes

Heated: Yes
Finished: Yes
Enclosed: Yes
Contiguous: Yes
Permitted: Yes
Wet space: Yes
Addition: No
Conversion: No