

Home report

137 Hageman Street, Berkeley Springs, Morgan County, West Virginia, United States, 25411



Total Area: 1202 sq. ft

Below Ground: 28 sq. ft, Floor 2: 587 sq. ft, Floor 3: 587 sq. ft, Floor 4: 0 sq. ft  
Excluded: Basement 580 sq. ft, Screened porch 225 sq. ft, Porch 217 sq. ft, Low ceiling 290 sq. ft, Attic 297 sq. ft, Walls: 222 sq. ft

Property summary

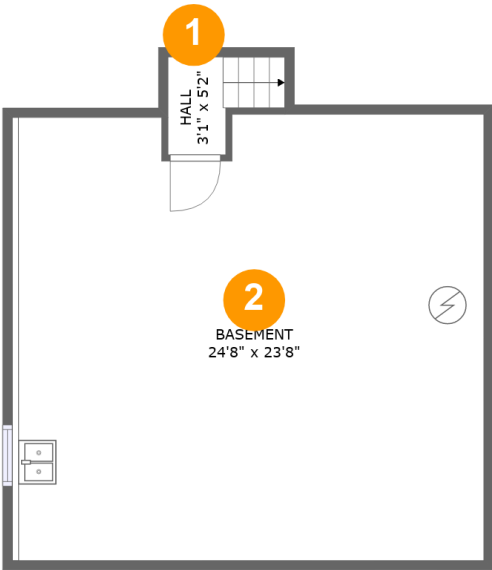
 **4** Floors

 **3** Bedrooms

 **1** Bathrooms

Home report

137 Hageman Street, Berkeley Springs, Morgan County, West Virginia, United States, 25411



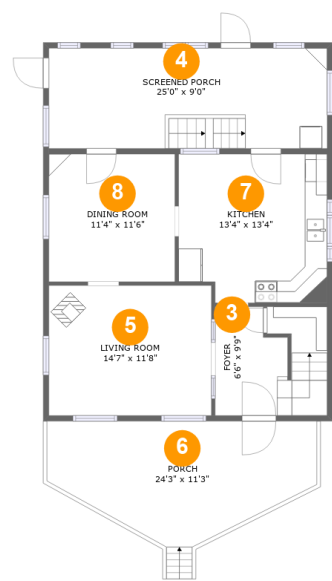
Room dimensions

Floor 1 Below ground Total:28sqft Excluded: 580sqft

#		Max Dimensions	sqft	Included
1	Hall	3'1" x 5'2"	24 sq. ft	Yes
2	Basement	24'8" x 23'8"	580 sq. ft	No

Home report

137 Hageman Street, Berkeley Springs, Morgan County, West Virginia, United States, 25411

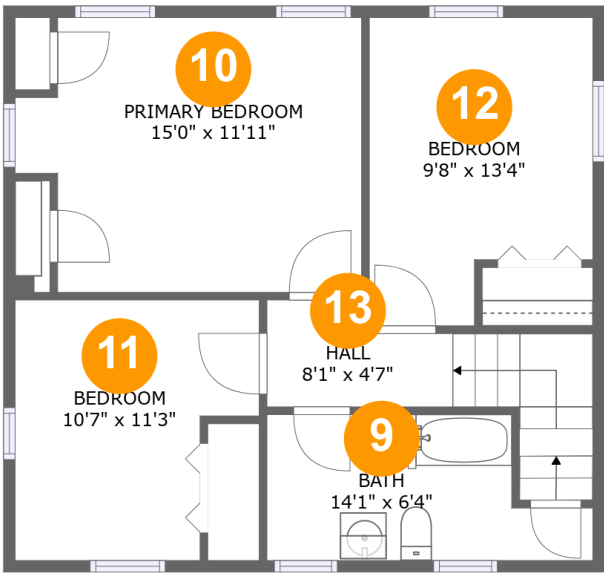


Room dimensions

Floor 2 Total:587sqft    Excluded: 442sqft

#		Max Dimensions	sqft	Included
3	Foyer	6'6" x 9'9"	77 sq. ft	Yes
4	Screened Porch	25'0" x 9'0"	225 sq. ft	No
5	Living Room	14'7" x 11'8"	170 sq. ft	Yes
6	Porch	24'3" x 11'3"	217 sq. ft	No
7	Kitchen	13'4" x 13'4"	172 sq. ft	Yes
8	Dining Room	11'4" x 11'6"	130 sq. ft	Yes

137 Hageman Street, Berkeley Springs, Morgan County, West Virginia, United States, 25411

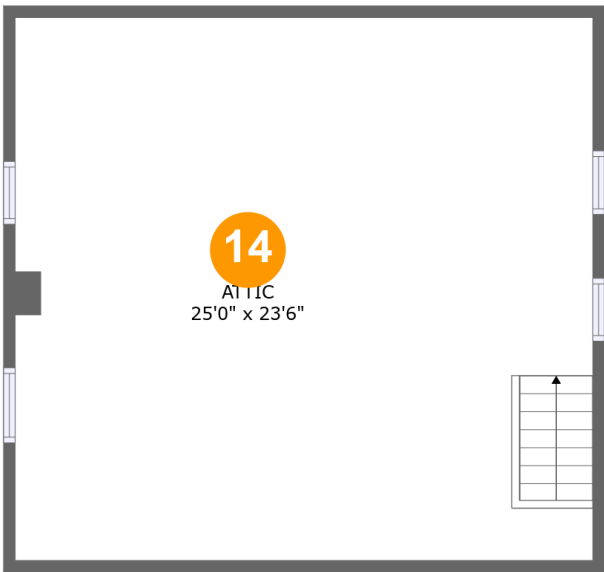


Room dimensions

Floor 3 Total:587sqft Excluded: 0sqft

#		Max Dimensions	sqft	Included
9	Bath	14'1" x 6'4"	76 sq. ft	Yes
10	Primary Bedroom	15'0" x 11'11"	162 sq. ft	Yes
11	Bedroom	10'7" x 11'3"	103 sq. ft	Yes
12	Bedroom	9'8" x 13'4"	114 sq. ft	Yes
13	Hall	8'1" x 4'7"	63 sq. ft	Yes

137 Hageman Street, Berkeley Springs, Morgan County, West Virginia, United States, 25411



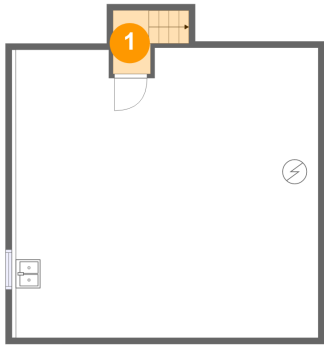
Room dimensions

Floor 4 Total:0sqft   Excluded: 587sqft

#		Max Dimensions	sqft	Included
14	Attic	25'0" x 23'6"	297 sq. ft	No

137 Hageman Street, Berkeley Springs, Morgan County, West Virginia, United States, 25411

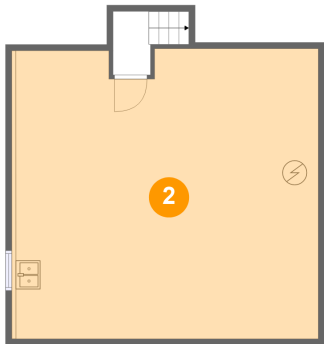
1 Floor 1 - Hall



Max Dimensions: 3'1" x 5'2"  
Calculated Area: 24 sq. ft  
Included: No

Heated: Yes  
Finished: Yes  
Enclosed: Yes  
Contiguous: No  
Permitted: Yes  
Wet space: No  
Addition: No  
Conversion: No

2 Floor 1 - Basement



Max Dimensions: 24'8" x 23'8"  
Calculated Area: 580 sq. ft  
Included: No

Heated: Yes  
Finished: No  
Enclosed: Yes  
Contiguous: Yes  
Permitted: Yes  
Wet space: No  
Addition: No  
Conversion: No

137 Hageman Street, Berkeley Springs, Morgan County, West Virginia, United States, 25411

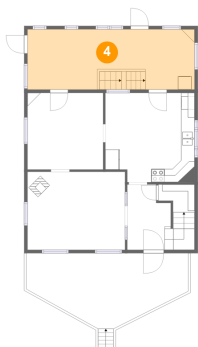
3 Floor 2 - Foyer



Max Dimensions: 6'6" x 9'9"  
Calculated Area: 77 sq. ft  
Included: Yes

Heated: Yes  
Finished: Yes  
Enclosed: Yes  
Contiguous: Yes  
Permitted: Yes  
Wet space: No  
Addition: No  
Conversion: No

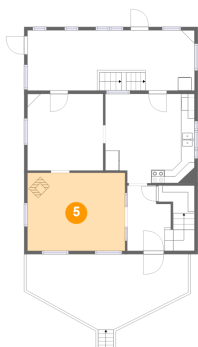
4 Floor 2 - Screened Porch



Max Dimensions: 25'0" x 9'0"  
Calculated Area: 225 sq. ft  
Included: No

Heated: No  
Finished: Yes  
Enclosed: No  
Contiguous: Yes  
Permitted: Yes  
Wet space: No  
Addition: No  
Conversion: No

5 Floor 2 - Living Room



Max Dimensions: 14'7" x 11'8"  
Calculated Area: 170 sq. ft  
Included: Yes

Heated: Yes  
Finished: Yes  
Enclosed: Yes  
Contiguous: Yes  
Permitted: Yes  
Wet space: No  
Addition: No  
Conversion: No

137 Hageman Street, Berkeley Springs, Morgan County, West Virginia, United States, 25411

6 Floor 2 - Porch



Max Dimensions: 24'3" x 11'3"  
Calculated Area: 217 sq. ft  
Included: No

Heated: No  
Finished: Yes  
Enclosed: No  
Contiguous: Yes  
Permitted: Yes  
Wet space: No  
Addition: No  
Conversion: No

7 Floor 2 - Kitchen



Max Dimensions: 13'4" x 13'4"  
Calculated Area: 172 sq. ft  
Included: Yes

Heated: Yes  
Finished: Yes  
Enclosed: Yes  
Contiguous: Yes  
Permitted: Yes  
Wet space: No  
Addition: No  
Conversion: No

8 Floor 2 - Dining Room



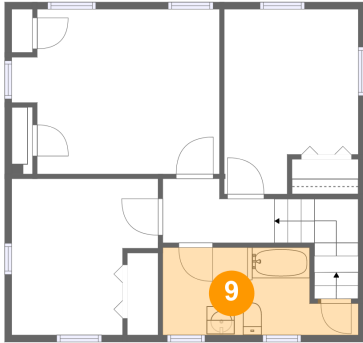
Max Dimensions: 11'4" x 11'6"  
Calculated Area: 130 sq. ft  
Included: Yes

Heated: Yes  
Finished: Yes  
Enclosed: Yes  
Contiguous: Yes  
Permitted: Yes  
Wet space: No  
Addition: No  
Conversion: No



137 Hageman Street, Berkeley Springs, Morgan County, West Virginia, United States, 25411

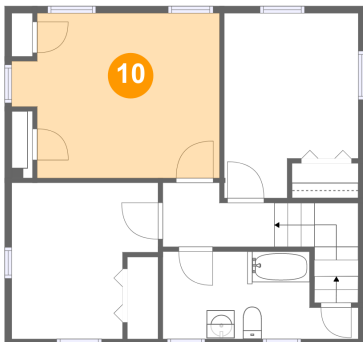
### 9 Floor 3 - Bath



Max Dimensions: 14'1" x 6'4"  
Calculated Area: 76 sq. ft  
Included: Yes

Heated: Yes  
Finished: Yes  
Enclosed: Yes  
Contiguous: Yes  
Permitted: Yes  
Wet space: Yes  
Addition: No  
Conversion: No

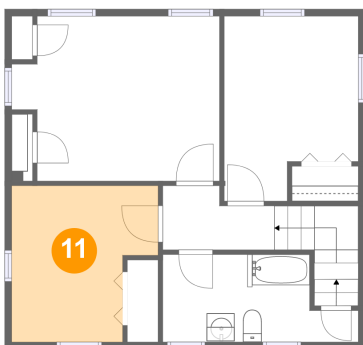
### 10 Floor 3 - Primary Bedroom



Max Dimensions: 15'0" x 11'11"  
Calculated Area: 162 sq. ft  
Included: Yes

Heated: Yes  
Finished: Yes  
Enclosed: Yes  
Contiguous: Yes  
Permitted: Yes  
Wet space: No  
Addition: No  
Conversion: No

### 11 Floor 3 - Bedroom

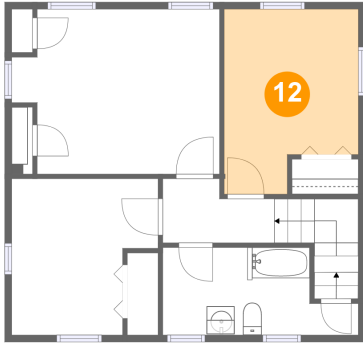


Max Dimensions: 10'7" x 11'3"  
Calculated Area: 103 sq. ft  
Included: Yes

Heated: Yes  
Finished: Yes  
Enclosed: Yes  
Contiguous: Yes  
Permitted: Yes  
Wet space: No  
Addition: No  
Conversion: No

137 Hageman Street, Berkeley Springs, Morgan County, West Virginia, United States, 25411

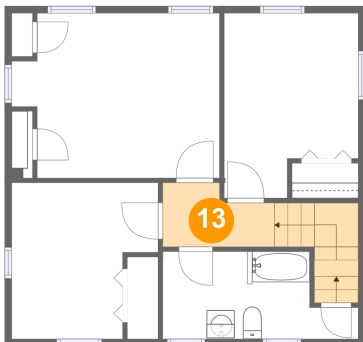
## 12 Floor 3 - Bedroom



Max Dimensions: 9'8" x 13'4"  
Calculated Area: 114 sq. ft  
Included: Yes

Heated: Yes  
Finished: Yes  
Enclosed: Yes  
Contiguous: Yes  
Permitted: Yes  
Wet space: No  
Addition: No  
Conversion: No

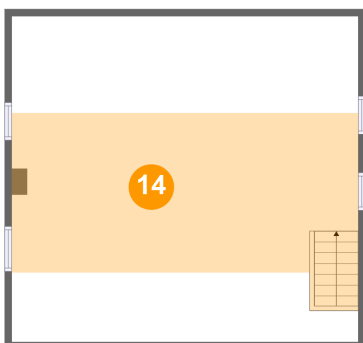
## 13 Floor 3 - Hall



Max Dimensions: 8'1" x 4'7"  
Calculated Area: 63 sq. ft  
Included: Yes

Heated: Yes  
Finished: Yes  
Enclosed: Yes  
Contiguous: Yes  
Permitted: Yes  
Wet space: No  
Addition: No  
Conversion: No

## 14 Floor 4 - Attic



Max Dimensions: 25'0" x 23'6"  
Calculated Area: 297 sq. ft  
Included: No

Heated: No  
Finished: No  
Enclosed: Yes  
Contiguous: Yes  
Permitted: Yes  
Wet space: No  
Addition: No  
Conversion: No