

Home report

54 Bay View Circle, Penhook, Franklin County, Virginia, United States, 24137



Total GLA: 6548 sq. ft

Floor 1: 1786 sq. ft, Floor 2: 2597 sq. ft, Floor 3: 1942 sq. ft, Floor 4: 223 sq. ft
Excluded: Storage 524 sq. ft, Wine cellar 259 sq. ft, Screened porch 334 sq. ft, Covered patio 481 sq. ft, Garage 904 sq. ft, Porch 234 sq. ft, Deck 437 sq. ft, Hall 106 sq. ft, Fireplace 6 sq. ft, Attic 575 sq. ft, Low ceiling 214 sq. ft, Balcony 46 sq. ft

Property summary

**4** Floors

**5** Bedrooms

**6** Bathrooms

Home report

54 Bay View Circle, Penhook, Franklin County, Virginia, United States, 24137



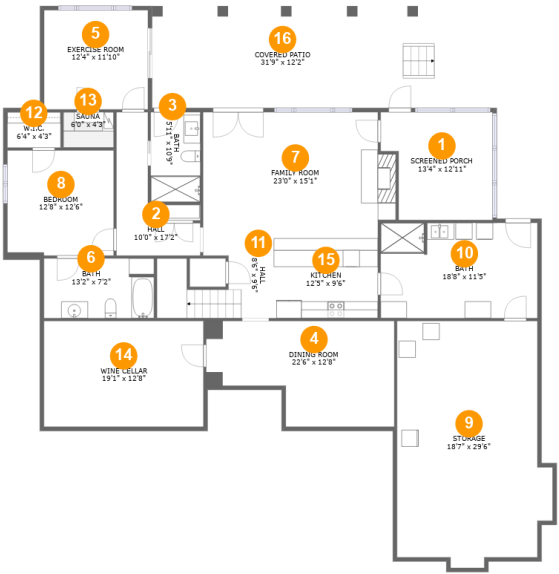
1
Half baths



1
Garages

Home report

54 Bay View Circle, Penhook, Franklin County, Virginia, United States, 24137



Room dimensions

Floor 1 Total:1786sqft Excluded: 1338sqft

#		Max Dimensions	sqft	Included
1	Screened Porch	13'4" x 12'11"	155 sq. ft	No
2	Hall	10'0" x 17'2"	89 sq. ft	Yes
3	Bath	5'11" x 10'9"	64 sq. ft	Yes
4	Dining Room	22'6" x 12'8"	237 sq. ft	Yes
5	Exercise Room	12'4" x 11'10"	147 sq. ft	Yes
6	Bath	13'2" x 7'2"	93 sq. ft	Yes
7	Family Room	23'0" x 15'1"	332 sq. ft	Yes
8	Bedroom	12'8" x 12'6"	159 sq. ft	Yes
9	Storage	18'7" x 29'6"	490 sq. ft	No
10	Bath	18'8" x 11'5"	212 sq. ft	Yes
11	Hall	8'6" x 9'6"	100 sq. ft	Yes

Home report

54 Bay View Circle, Penhook, Franklin County, Virginia, United States, 24137

#		Max Dimensions	sqft	Included
12	W.I.C.	6'4" x 4'3"	27 sq. ft	Yes
13	Sauna	6'0" x 4'3"	25 sq. ft	Yes
14	Wine Cellar	19'1" x 12'8"	241 sq. ft	No
15	Kitchen	12'5" x 9'6"	118 sq. ft	Yes
16	Covered Patio	31'9" x 12'2"	387 sq. ft	No

54 Bay View Circle, Penhook, Franklin County, Virginia, United States, 24137



Room dimensions

Floor 2 Total:2597sqft Excluded: 1947sqft

#		Max Dimensions	sqft	Included
17	Deck	32'2" x 11'9"	437 sq. ft	No
18	Pantry	9'1" x 7'1"	65 sq. ft	Yes
19	Hall	3'9" x 7'6"	28 sq. ft	Yes
20	Living Room	17'1" x 17'2"	266 sq. ft	Yes
21	Screened Porch	13'2" x 12'11"	157 sq. ft	No
22	Dining Area	16'0" x 17'2"	274 sq. ft	Yes
23	Porch	29'4" x 13'4"	234 sq. ft	No
24	Office	13'2" x 8'0"	106 sq. ft	Yes
25	Primary Bedroom	16'9" x 17'2"	287 sq. ft	Yes
26	Piano Room	13'0" x 13'9"	178 sq. ft	Yes
27	Entry	13'2" x 5'5"	71 sq. ft	Yes

Home report

54 Bay View Circle, Penhook, Franklin County, Virginia, United States, 24137

#		Max Dimensions	sqft	Included
28	Primary Bath	18'7" x 16'6"	241 sq. ft	Yes
29	Garage	34'6" x 27'5"	844 sq. ft	No
30	WC	3'2" x 4'11"	16 sq. ft	Yes
31	Kitchen	14'8" x 17'2"	241 sq. ft	Yes
32	Foyer	7'6" x 15'2"	168 sq. ft	Yes
33	Bath	9'5" x 6'0"	57 sq. ft	Yes
34	W.I.C.	6'3" x 6'11"	43 sq. ft	Yes
35	Laundry	7'2" x 12'8"	91 sq. ft	Yes
36	Hall	3'6" x 6'11"	24 sq. ft	Yes
37	Hall	3'2" x 3'5"	11 sq. ft	Yes
38	Hall	4'4" x 6'2"	90 sq. ft	No
39	Covered Patio	11'8" x 10'9"	94 sq. ft	No
40	W.I.C.	6'5" x 6'11"	44 sq. ft	Yes
41	Sunroom	12'4" x 11'10"	147 sq. ft	Yes

54 Bay View Circle, Penhook, Franklin County, Virginia, United States, 24137



Room dimensions

Floor 3 Total:1942sqft Excluded: 789sqft

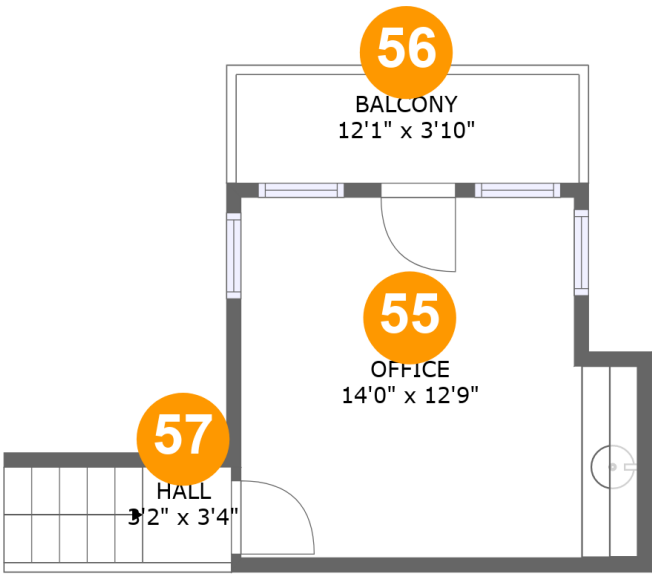
#		Max Dimensions	sqft	Included
42	Bonus Room	31'2" x 27'10"	663 sq. ft	Yes
43	Bath	7'6" x 5'10"	44 sq. ft	Yes
44	Attic	14'2" x 8'5"	116 sq. ft	No
45	Bedroom	13'2" x 19'9"	260 sq. ft	Yes
46	W.I.C.	8'1" x 9'0"	67 sq. ft	Yes
47	Bedroom	14'10" x 14'2"	210 sq. ft	Yes
48	Attic	15'6" x 24'4"	320 sq. ft	No
49	Attic	27'11" x 9'2"	108 sq. ft	No
50	Bath	6'2" x 7'8"	48 sq. ft	Yes
51	Hall	14'5" x 13'11"	228 sq. ft	Yes
52	Bedroom	7'0" x 15'1"	91 sq. ft	Yes

Home report

54 Bay View Circle, Penhook, Franklin County, Virginia, United States, 24137

#		Max Dimensions	sqft	Included
53	Hall	14'10" x 3'8"	55 sq. ft	Yes
54	Bath	7'1" x 5'10"	41 sq. ft	Yes

54 Bay View Circle, Penhook, Franklin County, Virginia, United States, 24137



Room dimensions

Floor 4 Total:223sqft Excluded: 46sqft

#		Max Dimensions	sqft	Included
55	Office	14'0" x 12'9"	165 sq. ft	Yes
56	Balcony	12'1" x 3'10"	46 sq. ft	No
57	Hall	3'2" x 3'4"	27 sq. ft	Yes

54 Bay View Circle, Penhook, Franklin County, Virginia, United States, 24137

1 Floor 1 - Screened Porch



Max Dimensions: 13'4" x 12'11"
Calculated Area: 155 sq. ft
Included: No

Heated: No
Finished: Yes
Enclosed: No
Contiguous: Yes
Permitted: Yes
Wet space: No
Addition: No
Conversion: No

2 Floor 1 - Hall



Max Dimensions: 10'0" x 17'2"
Calculated Area: 89 sq. ft
Included: Yes

Heated: Yes
Finished: Yes
Enclosed: Yes
Contiguous: Yes
Permitted: Yes
Wet space: No
Addition: No
Conversion: No

54 Bay View Circle, Penhook, Franklin County, Virginia, United States, 24137

3 Floor 1 - Bath



Max Dimensions: 5'11" x 10'9"
Calculated Area: 64 sq. ft
Included: Yes

Heated: Yes
Finished: Yes
Enclosed: Yes
Contiguous: Yes
Permitted: Yes
Wet space: Yes
Addition: No
Conversion: No

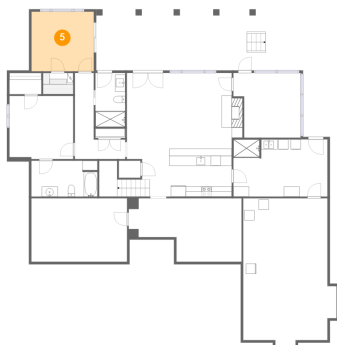
4 Floor 1 - Dining Room



Max Dimensions: 22'6" x 12'8"
Calculated Area: 237 sq. ft
Included: Yes

Heated: Yes
Finished: Yes
Enclosed: Yes
Contiguous: Yes
Permitted: Yes
Wet space: No
Addition: No
Conversion: No

5 Floor 1 - Exercise Room



Max Dimensions: 12'4" x 11'10"
Calculated Area: 147 sq. ft
Included: Yes

Heated: Yes
Finished: Yes
Enclosed: Yes
Contiguous: Yes
Permitted: Yes
Wet space: No
Addition: No
Conversion: No

54 Bay View Circle, Penhook, Franklin County, Virginia, United States, 24137

6 Floor 1 - Bath



Max Dimensions: 13'2" x 7'2"
Calculated Area: 93 sq. ft
Included: Yes

Heated: Yes
Finished: Yes
Enclosed: Yes
Contiguous: Yes
Permitted: Yes
Wet space: Yes
Addition: No
Conversion: No

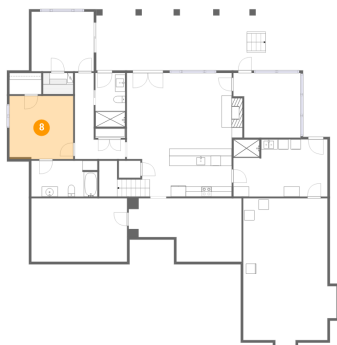
7 Floor 1 - Family Room



Max Dimensions: 23'0" x 15'1"
Calculated Area: 332 sq. ft
Included: Yes

Heated: Yes
Finished: Yes
Enclosed: Yes
Contiguous: Yes
Permitted: Yes
Wet space: No
Addition: No
Conversion: No

8 Floor 1 - Bedroom

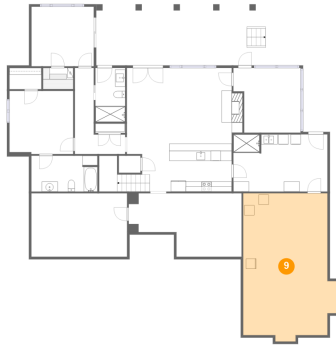


Max Dimensions: 12'8" x 12'6"
Calculated Area: 159 sq. ft
Included: Yes

Heated: Yes
Finished: Yes
Enclosed: Yes
Contiguous: Yes
Permitted: Yes
Wet space: No
Addition: No
Conversion: No

54 Bay View Circle, Penhook, Franklin County, Virginia, United States, 24137

9 Floor 1 - Storage



Max Dimensions: 18'7" x 29'6"
Calculated Area: 490 sq. ft
Included: No

Heated: No
Finished: No
Enclosed: No
Contiguous: Yes
Permitted: Yes
Wet space: No
Addition: No
Conversion: No

10 Floor 1 - Bath



Max Dimensions: 18'8" x 11'5"
Calculated Area: 212 sq. ft
Included: Yes

Heated: Yes
Finished: Yes
Enclosed: Yes
Contiguous: Yes
Permitted: Yes
Wet space: Yes
Addition: No
Conversion: No

11 Floor 1 - Hall



Max Dimensions: 8'6" x 9'6"
Calculated Area: 100 sq. ft
Included: Yes

Heated: Yes
Finished: Yes
Enclosed: Yes
Contiguous: Yes
Permitted: Yes
Wet space: No
Addition: No
Conversion: No

54 Bay View Circle, Penhook, Franklin County, Virginia, United States, 24137

12 Floor 1 - W.I.C.



Max Dimensions: 6'4" x 4'3"
Calculated Area: 27 sq. ft
Included: Yes

Heated: Yes
Finished: Yes
Enclosed: Yes
Contiguous: Yes
Permitted: Yes
Wet space: No
Addition: No
Conversion: No

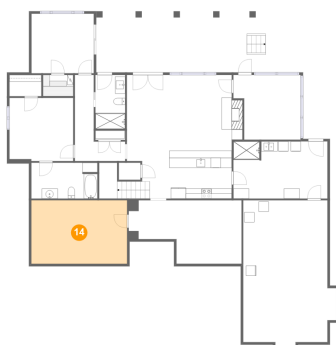
13 Floor 1 - Sauna



Max Dimensions: 6'0" x 4'3"
Calculated Area: 25 sq. ft
Included: Yes

Heated: Yes
Finished: Yes
Enclosed: Yes
Contiguous: Yes
Permitted: Yes
Wet space: No
Addition: No
Conversion: No

14 Floor 1 - Wine Cellar

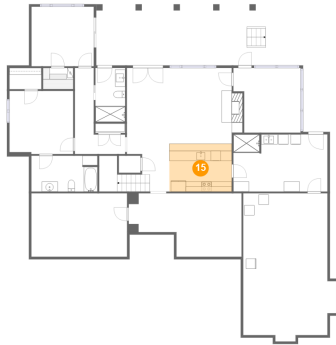


Max Dimensions: 19'1" x 12'8"
Calculated Area: 241 sq. ft
Included: No

Heated: No
Finished: Yes
Enclosed: Yes
Contiguous: Yes
Permitted: Yes
Wet space: No
Addition: No
Conversion: No

54 Bay View Circle, Penhook, Franklin County, Virginia, United States, 24137

15 Floor 1 - Kitchen



Max Dimensions: 12'5" x 9'6"
Calculated Area: 118 sq. ft
Included: Yes

Heated: Yes
Finished: Yes
Enclosed: Yes
Contiguous: Yes
Permitted: Yes
Wet space: No
Addition: No
Conversion: No

16 Floor 1 - Covered Patio



Max Dimensions: 31'9" x 12'2"
Calculated Area: 387 sq. ft
Included: No

Heated: No
Finished: Yes
Enclosed: No
Contiguous: Yes
Permitted: Yes
Wet space: No
Addition: No
Conversion: No

17 Floor 2 - Deck



Max Dimensions: 32'2" x 11'9"
Calculated Area: 437 sq. ft
Included: No

Heated: No
Finished: Yes
Enclosed: No
Contiguous: Yes
Permitted: Yes
Wet space: No
Addition: No
Conversion: No

54 Bay View Circle, Penhook, Franklin County, Virginia, United States, 24137

18 Floor 2 - Pantry



Max Dimensions: 9'1" x 7'1"
Calculated Area: 65 sq. ft
Included: Yes

Heated: Yes
Finished: Yes
Enclosed: Yes
Contiguous: Yes
Permitted: Yes
Wet space: No
Addition: No
Conversion: No

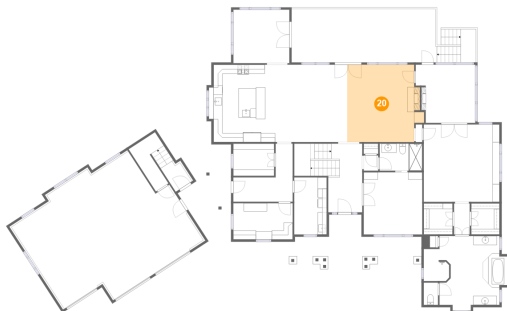
19 Floor 2 - Hall



Max Dimensions: 3'9" x 7'6"
Calculated Area: 28 sq. ft
Included: Yes

Heated: Yes
Finished: Yes
Enclosed: Yes
Contiguous: Yes
Permitted: Yes
Wet space: No
Addition: No
Conversion: No

20 Floor 2 - Living Room



Max Dimensions: 17'1" x 17'2"
Calculated Area: 266 sq. ft
Included: Yes

Heated: Yes
Finished: Yes
Enclosed: Yes
Contiguous: Yes
Permitted: Yes
Wet space: No
Addition: No
Conversion: No

54 Bay View Circle, Penhook, Franklin County, Virginia, United States, 24137

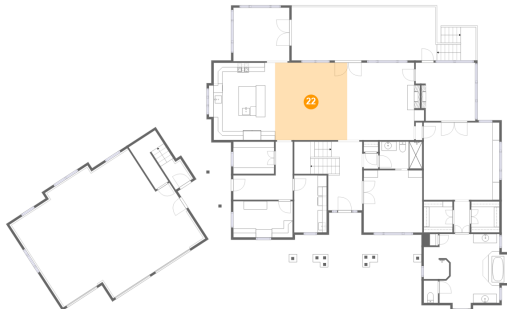
21 Floor 2 - Screened Porch



Max Dimensions: 13'2" x 12'11"
Calculated Area: 157 sq. ft
Included: No

Heated: No
Finished: Yes
Enclosed: No
Contiguous: Yes
Permitted: Yes
Wet space: No
Addition: No
Conversion: No

22 Floor 2 - Dining Area



Max Dimensions: 16'0" x 17'2"
Calculated Area: 274 sq. ft
Included: Yes

Heated: Yes
Finished: Yes
Enclosed: Yes
Contiguous: Yes
Permitted: Yes
Wet space: No
Addition: No
Conversion: No

23 Floor 2 - Porch



Max Dimensions: 29'4" x 13'4"
Calculated Area: 234 sq. ft
Included: No

Heated: No
Finished: Yes
Enclosed: No
Contiguous: Yes
Permitted: Yes
Wet space: No
Addition: No
Conversion: No

54 Bay View Circle, Penhook, Franklin County, Virginia, United States, 24137

24 Floor 2 - Office



Max Dimensions: 13'2" x 8'0"
Calculated Area: 106 sq. ft
Included: Yes

Heated: Yes
Finished: Yes
Enclosed: Yes
Contiguous: Yes
Permitted: Yes
Wet space: No
Addition: No
Conversion: No

25 Floor 2 - Primary Bedroom



Max Dimensions: 16'9" x 17'2"
Calculated Area: 287 sq. ft
Included: Yes

Heated: Yes
Finished: Yes
Enclosed: Yes
Contiguous: Yes
Permitted: Yes
Wet space: No
Addition: No
Conversion: No

26 Floor 2 - Piano Room



Max Dimensions: 13'0" x 13'9"
Calculated Area: 178 sq. ft
Included: Yes

Heated: Yes
Finished: Yes
Enclosed: Yes
Contiguous: Yes
Permitted: Yes
Wet space: No
Addition: No
Conversion: No

54 Bay View Circle, Penhook, Franklin County, Virginia, United States, 24137

27 Floor 2 - Entry



Max Dimensions: 13'2" x 5'5"
Calculated Area: 71 sq. ft
Included: Yes

Heated: Yes
Finished: Yes
Enclosed: Yes
Contiguous: Yes
Permitted: Yes
Wet space: No
Addition: No
Conversion: No

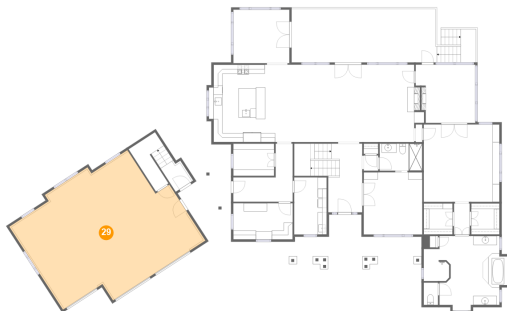
28 Floor 2 - Primary Bath



Max Dimensions: 18'7" x 16'6"
Calculated Area: 241 sq. ft
Included: Yes

Heated: Yes
Finished: Yes
Enclosed: Yes
Contiguous: Yes
Permitted: Yes
Wet space: Yes
Addition: No
Conversion: No

29 Floor 2 - Garage



Max Dimensions: 34'6" x 27'5"
Calculated Area: 844 sq. ft
Included: No

Heated: No
Finished: No
Enclosed: Yes
Contiguous: Yes
Permitted: Yes
Wet space: No
Addition: No
Conversion: No

54 Bay View Circle, Penhook, Franklin County, Virginia, United States, 24137

30 Floor 2 - WC



Max Dimensions: 3'2" x 4'11"
Calculated Area: 16 sq. ft
Included: Yes

Heated: Yes
Finished: Yes
Enclosed: Yes
Contiguous: Yes
Permitted: Yes
Wet space: Yes
Addition: No
Conversion: No

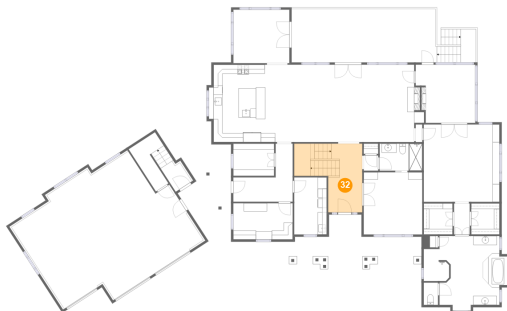
31 Floor 2 - Kitchen



Max Dimensions: 14'8" x 17'2"
Calculated Area: 241 sq. ft
Included: Yes

Heated: Yes
Finished: Yes
Enclosed: Yes
Contiguous: Yes
Permitted: Yes
Wet space: No
Addition: No
Conversion: No

32 Floor 2 - Foyer



Max Dimensions: 7'6" x 15'2"
Calculated Area: 168 sq. ft
Included: Yes

Heated: Yes
Finished: Yes
Enclosed: Yes
Contiguous: Yes
Permitted: Yes
Wet space: No
Addition: No
Conversion: No

54 Bay View Circle, Penhook, Franklin County, Virginia, United States, 24137

33 Floor 2 - Bath



Max Dimensions: 9'5" x 6'0"
Calculated Area: 57 sq. ft
Included: Yes

Heated: Yes
Finished: Yes
Enclosed: Yes
Contiguous: Yes
Permitted: Yes
Wet space: Yes
Addition: No
Conversion: No

34 Floor 2 - W.I.C.



Max Dimensions: 6'3" x 6'11"
Calculated Area: 43 sq. ft
Included: Yes

Heated: Yes
Finished: Yes
Enclosed: Yes
Contiguous: Yes
Permitted: Yes
Wet space: No
Addition: No
Conversion: No

35 Floor 2 - Laundry



Max Dimensions: 7'2" x 12'8"
Calculated Area: 91 sq. ft
Included: Yes

Heated: Yes
Finished: Yes
Enclosed: Yes
Contiguous: Yes
Permitted: Yes
Wet space: No
Addition: No
Conversion: No

54 Bay View Circle, Penhook, Franklin County, Virginia, United States, 24137

36 Floor 2 - Hall



Max Dimensions: 3'6" x 6'11"
Calculated Area: 24 sq. ft
Included: Yes

Heated: Yes
Finished: Yes
Enclosed: Yes
Contiguous: Yes
Permitted: Yes
Wet space: No
Addition: No
Conversion: No

37 Floor 2 - Hall



Max Dimensions: 3'2" x 3'5"
Calculated Area: 11 sq. ft
Included: Yes

Heated: Yes
Finished: Yes
Enclosed: Yes
Contiguous: Yes
Permitted: Yes
Wet space: No
Addition: No
Conversion: No

38 Floor 2 - Hall



Max Dimensions: 4'4" x 6'2"
Calculated Area: 90 sq. ft
Included: No

Heated: Yes
Finished: Yes
Enclosed: Yes
Contiguous: No
Permitted: Yes
Wet space: No
Addition: No
Conversion: No

54 Bay View Circle, Penhook, Franklin County, Virginia, United States, 24137

39 Floor 2 - Covered Patio



Max Dimensions: 11'8" x 10'9"
Calculated Area: 94 sq. ft
Included: No

Heated: No
Finished: Yes
Enclosed: No
Contiguous: Yes
Permitted: Yes
Wet space: No
Addition: No
Conversion: No

40 Floor 2 - W.I.C.



Max Dimensions: 6'5" x 6'11"
Calculated Area: 44 sq. ft
Included: Yes

Heated: Yes
Finished: Yes
Enclosed: Yes
Contiguous: Yes
Permitted: Yes
Wet space: No
Addition: No
Conversion: No

41 Floor 2 - Sunroom



Max Dimensions: 12'4" x 11'10"
Calculated Area: 147 sq. ft
Included: Yes

Heated: Yes
Finished: Yes
Enclosed: Yes
Contiguous: Yes
Permitted: Yes
Wet space: No
Addition: No
Conversion: No

54 Bay View Circle, Penhook, Franklin County, Virginia, United States, 24137

42 Floor 3 - Bonus Room



Max Dimensions: 31'2" x 27'10"
Calculated Area: 663 sq. ft
Included: Yes

Heated: Yes
Finished: Yes
Enclosed: Yes
Contiguous: Yes
Permitted: Yes
Wet space: No
Addition: No
Conversion: No

43 Floor 3 - Bath



Max Dimensions: 7'6" x 5'10"
Calculated Area: 44 sq. ft
Included: Yes

Heated: Yes
Finished: Yes
Enclosed: Yes
Contiguous: Yes
Permitted: Yes
Wet space: Yes
Addition: No
Conversion: No

44 Floor 3 - Attic

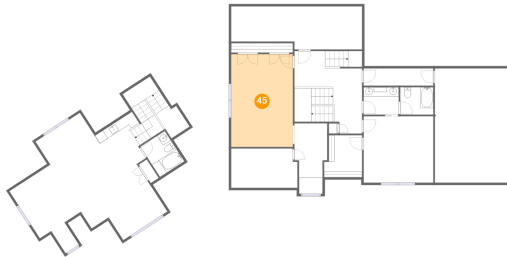


Max Dimensions: 14'2" x 8'5"
Calculated Area: 116 sq. ft
Included: No

Heated: No
Finished: No
Enclosed: Yes
Contiguous: No
Permitted: Yes
Wet space: No
Addition: No
Conversion: No

54 Bay View Circle, Penhook, Franklin County, Virginia, United States, 24137

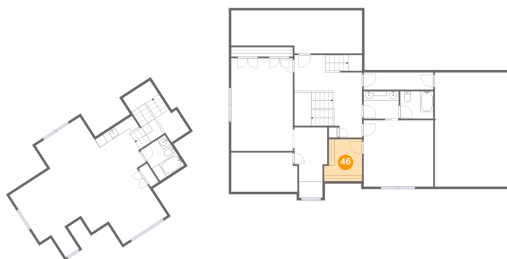
45 Floor 3 - Bedroom



Max Dimensions: 13'2" x 19'9"
Calculated Area: 260 sq. ft
Included: Yes

Heated: Yes
Finished: Yes
Enclosed: Yes
Contiguous: Yes
Permitted: Yes
Wet space: No
Addition: No
Conversion: No

46 Floor 3 - W.I.C.



Max Dimensions: 8'1" x 9'0"
Calculated Area: 67 sq. ft
Included: Yes

Heated: Yes
Finished: Yes
Enclosed: Yes
Contiguous: Yes
Permitted: Yes
Wet space: No
Addition: No
Conversion: No

47 Floor 3 - Bedroom

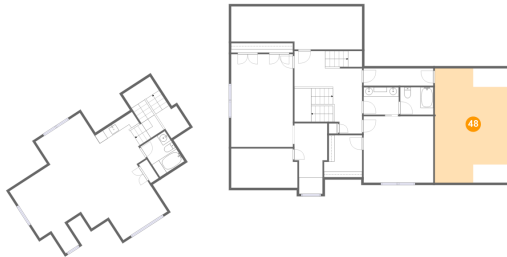


Max Dimensions: 14'10" x 14'2"
Calculated Area: 210 sq. ft
Included: Yes

Heated: Yes
Finished: Yes
Enclosed: Yes
Contiguous: Yes
Permitted: Yes
Wet space: No
Addition: No
Conversion: No

54 Bay View Circle, Penhook, Franklin County, Virginia, United States, 24137

48 Floor 3 - Attic



Max Dimensions: 15'6" x 24'4"
Calculated Area: 320 sq. ft
Included: No

Heated: No
Finished: No
Enclosed: Yes
Contiguous: Yes
Permitted: Yes
Wet space: No
Addition: No
Conversion: No

49 Floor 3 - Attic



Max Dimensions: 27'11" x 9'2"
Calculated Area: 108 sq. ft
Included: No

Heated: No
Finished: No
Enclosed: Yes
Contiguous: Yes
Permitted: Yes
Wet space: No
Addition: No
Conversion: No

50 Floor 3 - Bath



Max Dimensions: 6'2" x 7'8"
Calculated Area: 48 sq. ft
Included: Yes

Heated: Yes
Finished: Yes
Enclosed: Yes
Contiguous: Yes
Permitted: Yes
Wet space: Yes
Addition: No
Conversion: No

54 Bay View Circle, Penhook, Franklin County, Virginia, United States, 24137

51 Floor 3 - Hall



Max Dimensions: 14'5" x 13'11"
Calculated Area: 228 sq. ft
Included: Yes

Heated: Yes
Finished: Yes
Enclosed: Yes
Contiguous: Yes
Permitted: Yes
Wet space: No
Addition: No
Conversion: No

52 Floor 3 - Bedroom



Max Dimensions: 7'0" x 15'1"
Calculated Area: 91 sq. ft
Included: Yes

Heated: Yes
Finished: Yes
Enclosed: Yes
Contiguous: Yes
Permitted: Yes
Wet space: No
Addition: No
Conversion: No

53 Floor 3 - Hall



Max Dimensions: 14'10" x 3'8"
Calculated Area: 55 sq. ft
Included: Yes

Heated: Yes
Finished: Yes
Enclosed: Yes
Contiguous: Yes
Permitted: Yes
Wet space: No
Addition: No
Conversion: No

54 Bay View Circle, Penhook, Franklin County, Virginia, United States, 24137

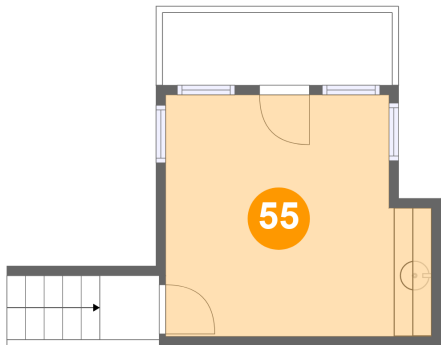
54 Floor 3 - Bath



Max Dimensions: 7'1" x 5'10"
Calculated Area: 41 sq. ft
Included: Yes

Heated: Yes
Finished: Yes
Enclosed: Yes
Contiguous: Yes
Permitted: Yes
Wet space: Yes
Addition: No
Conversion: No

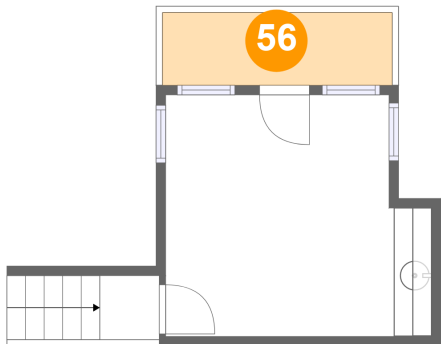
55 Floor 4 - Office



Max Dimensions: 14'0" x 12'9"
Calculated Area: 165 sq. ft
Included: Yes

Heated: Yes
Finished: Yes
Enclosed: Yes
Contiguous: Yes
Permitted: Yes
Wet space: No
Addition: No
Conversion: No

56 Floor 4 - Balcony

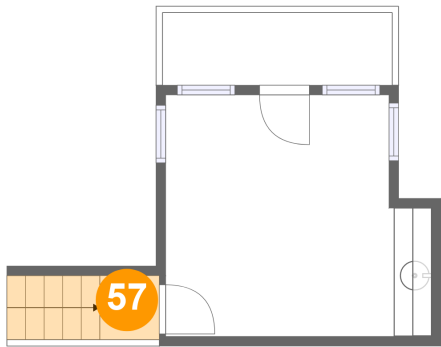


Max Dimensions: 12'1" x 3'10"
Calculated Area: 46 sq. ft
Included: No

Heated: No
Finished: Yes
Enclosed: No
Contiguous: Yes
Permitted: Yes
Wet space: No
Addition: No
Conversion: No

54 Bay View Circle, Penhook, Franklin County, Virginia, United States, 24137

57 Floor 4 - Hall



Max Dimensions: 3'2" x 3'4"
Calculated Area: 27 sq. ft
Included: Yes

Heated: Yes
Finished: Yes
Enclosed: Yes
Contiguous: Yes
Permitted: Yes
Wet space: No
Addition: No
Conversion: No