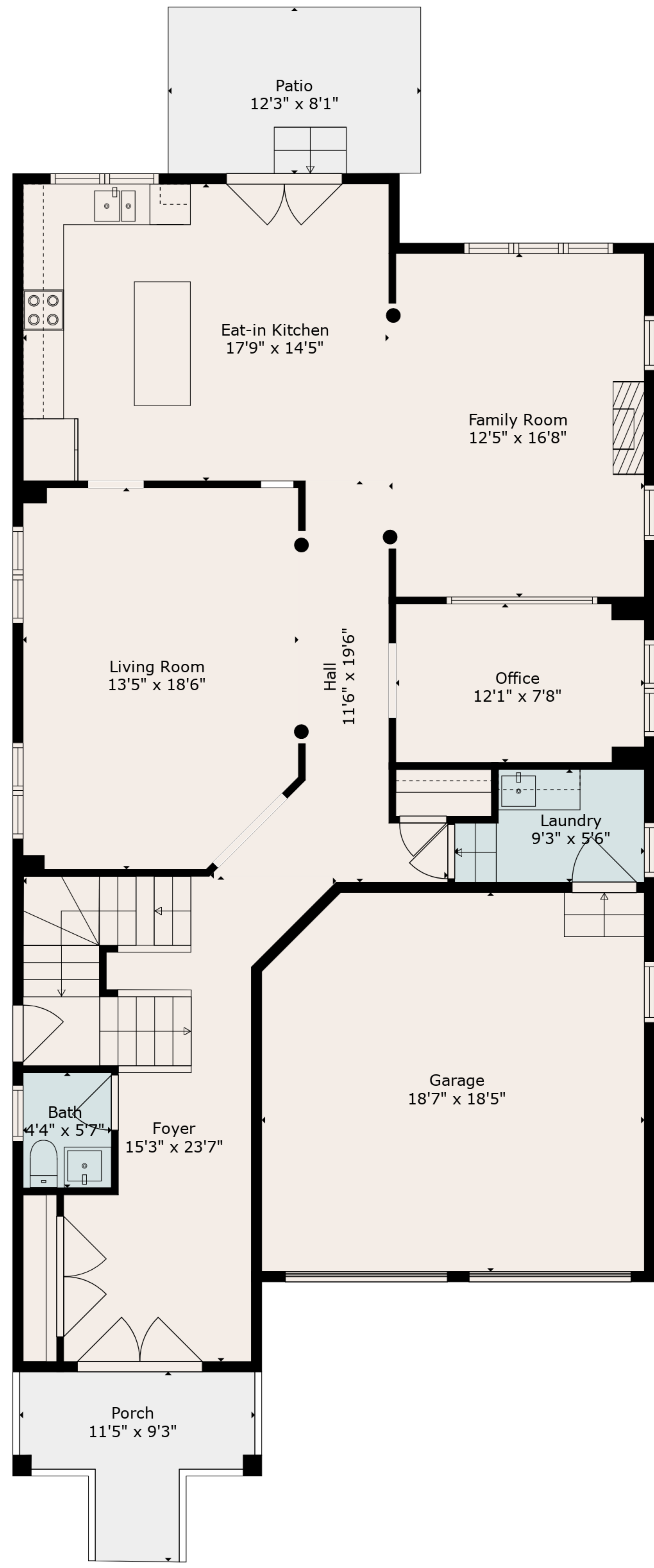


**TOTAL: 3736 sq. ft**

Below Ground: 966 sq. ft, FLOOR 2: 1250 sq. ft, FLOOR 3: 1520 sq. ft  
 EXCLUDED AREAS: STORAGE: 62 sq. ft, ELECTRICAL ROOM: 59 sq. ft, BADROOM: 105 sq. ft,  
 GARAGE: 335 sq. ft, PORCH: 72 sq. ft, PATIO: 99 sq. ft

All Images And Dimensions Herein Are Approximate And For Illustrative Purposes Only

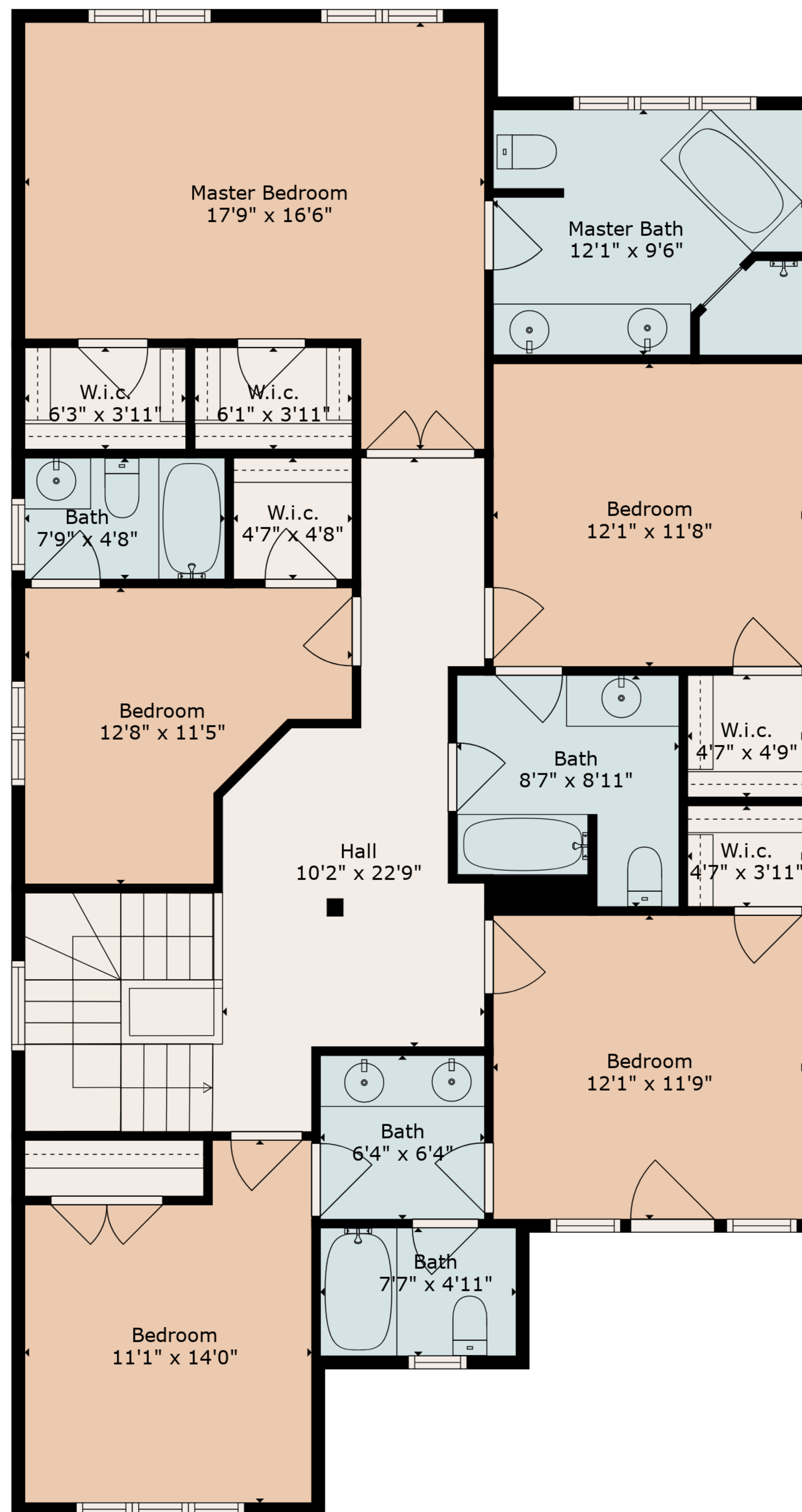


**TOTAL: 3736 sq. ft**

Below Ground: 966 sq. ft, FLOOR 2: 1250 sq. ft, FLOOR 3: 1520 sq. ft  
 EXCLUDED AREAS: STORAGE: 62 sq. ft, ELECTRICAL ROOM: 59 sq. ft, BADROOM: 105 sq. ft,  
 GARAGE: 335 sq. ft, PORCH: 72 sq. ft, PATIO: 99 sq. ft

All Images And Dimensions Herein Are Approximate And For Illustrative Purposes Only



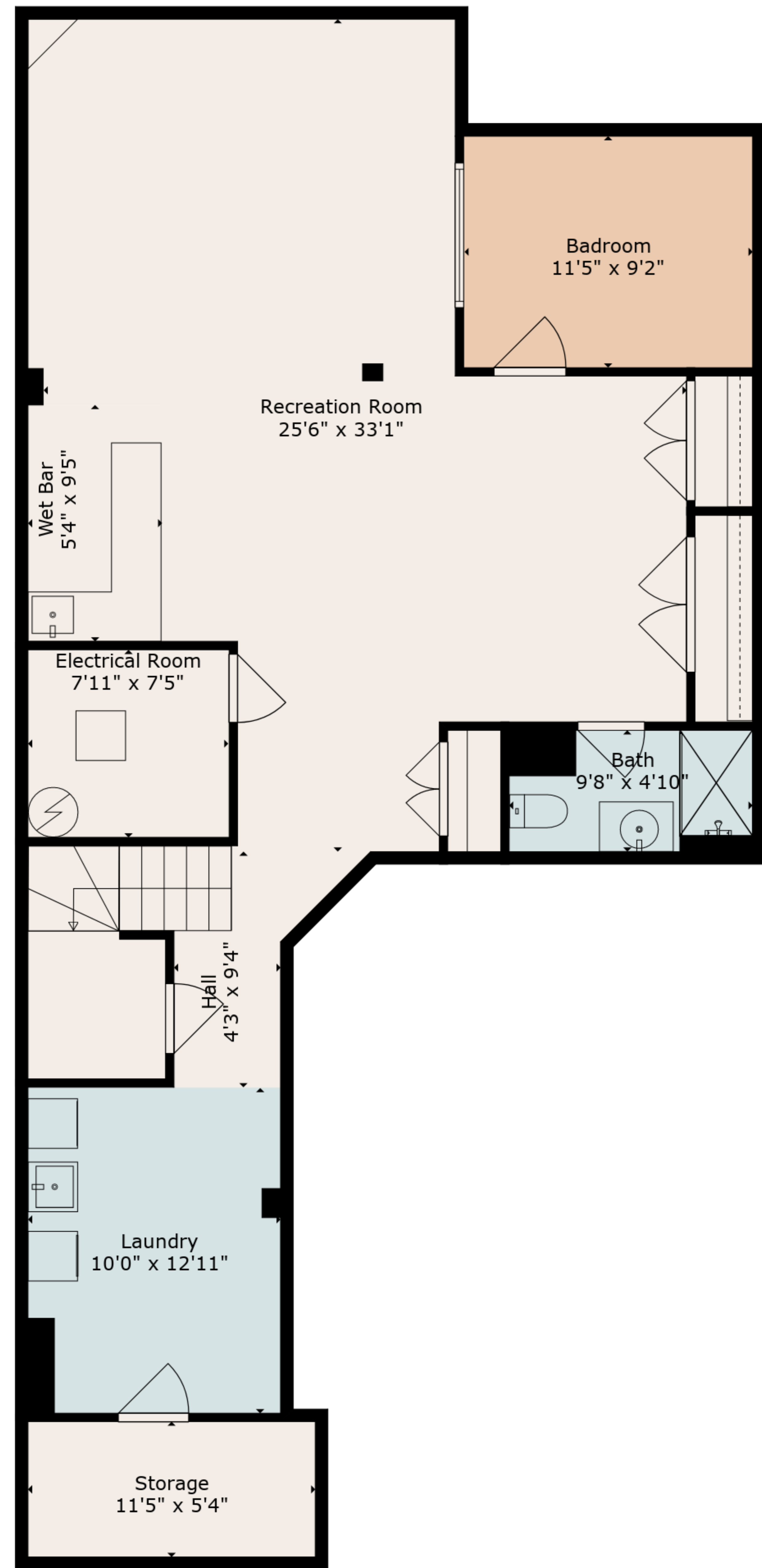


**TOTAL: 3736 sq. ft**

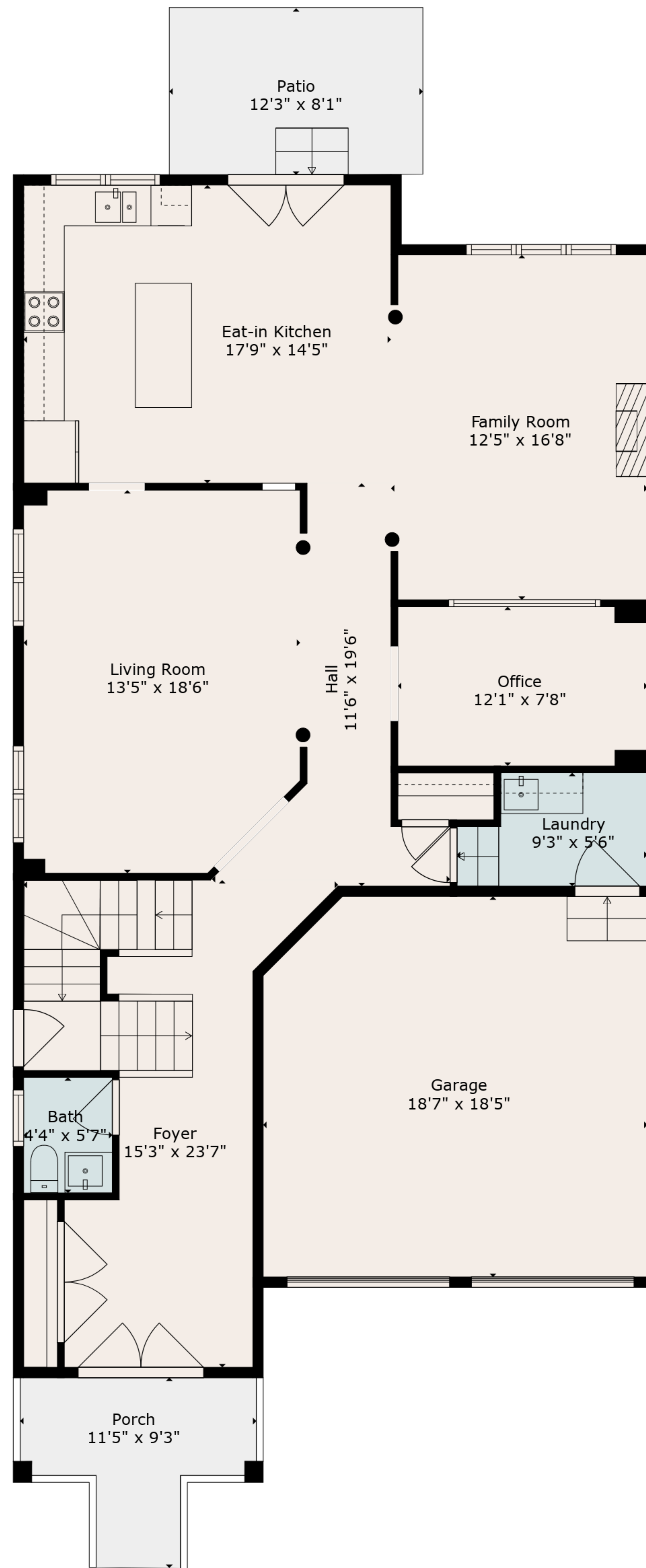
Below Ground: 966 sq. ft, FLOOR 2: 1250 sq. ft, FLOOR 3: 1520 sq. ft  
 EXCLUDED AREAS: STORAGE: 62 sq. ft, ELECTRICAL ROOM: 59 sq. ft, BADROOM: 105 sq. ft,  
 GARAGE: 335 sq. ft, PORCH: 72 sq. ft, PATIO: 99 sq. ft

All Images And Dimensions Herein Are Approximate And For Illustrative Purposes Only

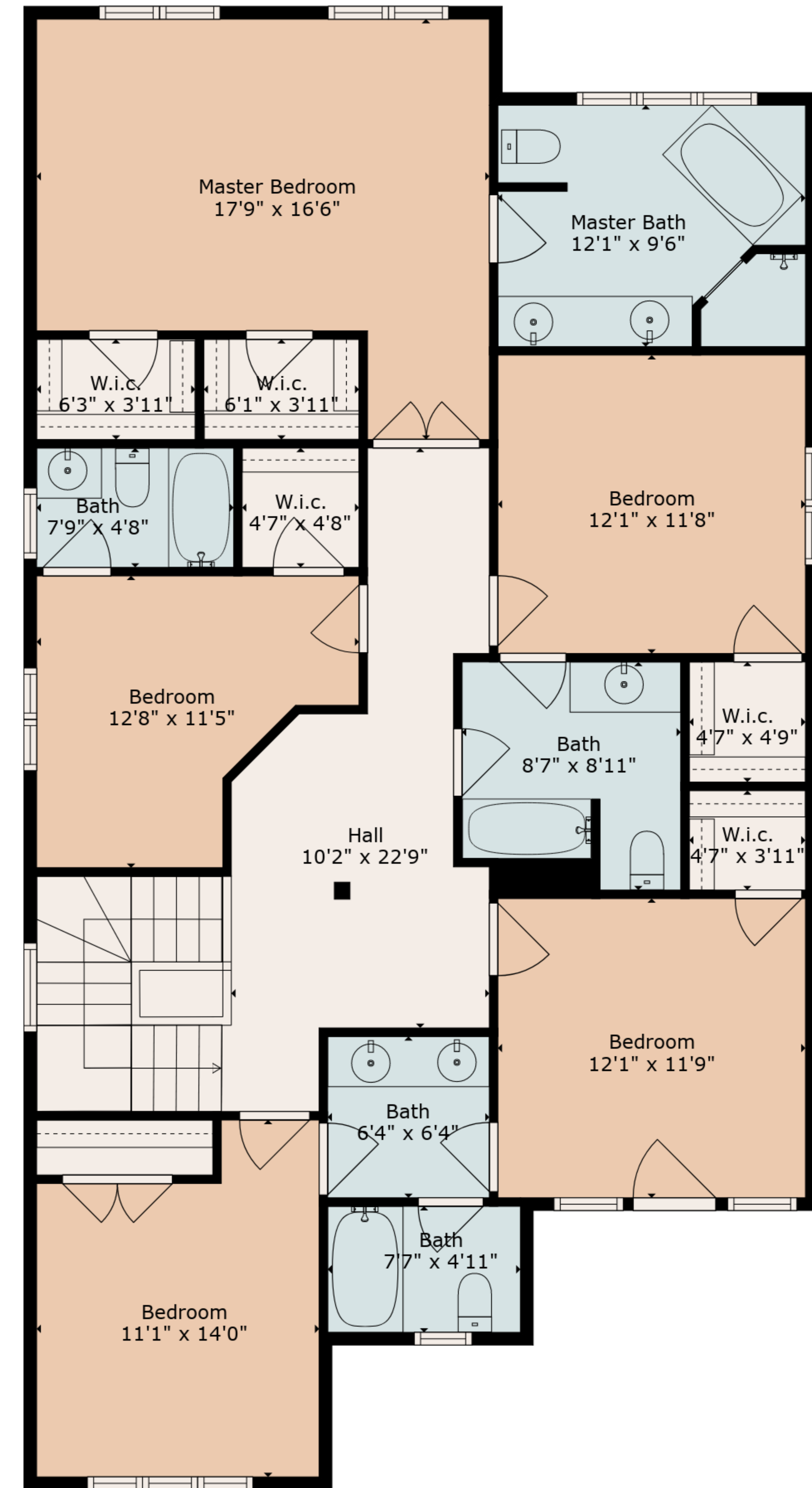




Floor 1



Floor 2



Floor 3

**TOTAL: 3736 sq. ft**

Below Ground: 966 sq. ft, FLOOR 2: 1250 sq. ft, FLOOR 3: 1520 sq. ft  
 EXCLUDED AREAS: STORAGE: 62 sq. ft, ELECTRICAL ROOM: 59 sq. ft, BADROOM: 105 sq. ft,  
 GARAGE: 335 sq. ft, PORCH: 72 sq. ft, PATIO: 99 sq. ft

All Images And Dimensions Herein Are Approximate And For Illustrative Purposes Only

