

Home data report

8543 E Jackrabbit Rd,Scottsdale,AZ,US



Total Area: 1854 sq. ft

1st Floor: 1854 sq. ft

Excluded: Porch 41 sq. ft, Fireplace 12 sq. ft, Walls: 120 sq. ft

Property summary

 **1** Floors

 **3** Bedrooms

 **2** Bathrooms

 **1** Garages

Home data report

8543 E Jackrabbit Rd,Scottsdale,AZ,US



Room dimensions

Floor 1 Total:1854sqft    Excluded: 53sqft

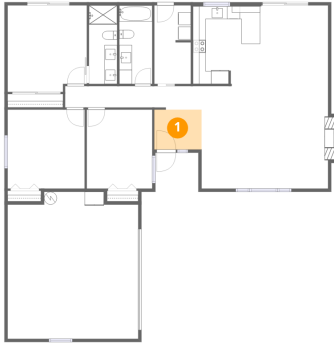
#		Dimensions	sqft	Counted as living area
1	Foyer	7'5" x 6'2"	46 sq. ft	Yes
2	Kitchen	10'6" x 12'6"	128 sq. ft	Yes
3	Bath	5'2" x 12'3"	63 sq. ft	Yes
4	Primary Bedroom	12'4" x 13'6"	163 sq. ft	Yes
5	Laundry	5'8" x 12'3"	69 sq. ft	Yes
6	Bedroom	12'0" x 12'4"	148 sq. ft	Yes
7	Dining Area	10'8" x 12'7"	134 sq. ft	Yes
8	Hall	21'4" x 3'8"	73 sq. ft	Yes
9	Porch	6'9" x 6'1"	41 sq. ft	No
10	Living Room	19'9" x 16'0"	327 sq. ft	Yes
11	Bedroom	10'3" x 12'4"	126 sq. ft	Yes

Home data report

8543 E Jackrabbit Rd,Scottsdale,AZ,US

#		Dimensions	sqft	Counted as living area
12	Bath	4'5" x 12'3"	54 sq. ft	Yes
13	Garage	20'5" x 22'11"	446 sq. ft	Yes

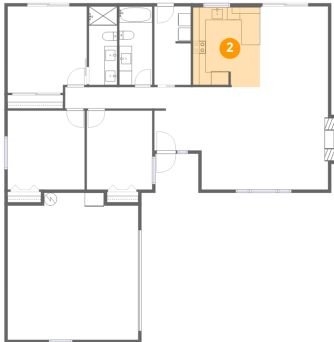
1 Floor 1 - Foyer



Dimensions: 7'5" x 6'2"  
Area: 46 sq. ft  
Counted as living area: Yes

Heated: Yes  
Finished: Yes  
Enclosed: Yes  
Contiguous: Yes  
Permitted: Yes  
Wet space: No  
Addition: No  
Conversion: No

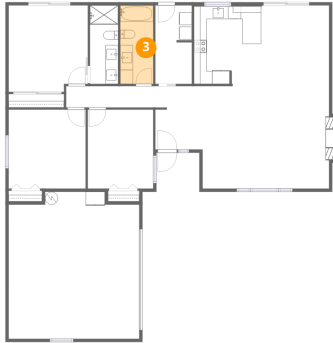
2 Floor 1 - Kitchen



Dimensions: 10'6" x 12'6"  
Area: 128 sq. ft  
Counted as living area: Yes

Heated: Yes  
Finished: Yes  
Enclosed: Yes  
Contiguous: Yes  
Permitted: Yes  
Wet space: No  
Addition: No  
Conversion: No

### 3 Floor 1 - Bath



Dimensions: 5'2" x 12'3"  
Area: 63 sq. ft  
Counted as living area: Yes

Heated: Yes  
Finished: Yes  
Enclosed: Yes  
Contiguous: Yes  
Permitted: Yes  
Wet space: Yes  
Addition: No  
Conversion: No

### 4 Floor 1 - Primary Bedroom



Dimensions: 12'4" x 13'6"  
Area: 163 sq. ft  
Counted as living area: Yes

Heated: Yes  
Finished: Yes  
Enclosed: Yes  
Contiguous: Yes  
Permitted: Yes  
Wet space: No  
Addition: No  
Conversion: No

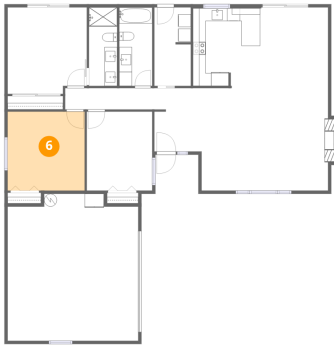
### 5 Floor 1 - Laundry



Dimensions: 5'8" x 12'3"  
Area: 69 sq. ft  
Counted as living area: Yes

Heated: Yes  
Finished: Yes  
Enclosed: Yes  
Contiguous: Yes  
Permitted: Yes  
Wet space: No  
Addition: No  
Conversion: No

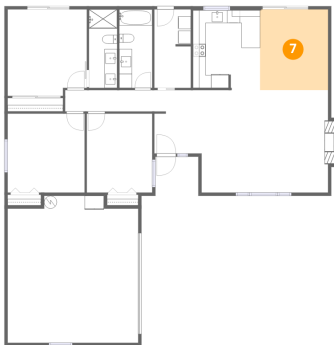
6 Floor 1 - Bedroom



Dimensions: 12'0" x 12'4"  
Area: 148 sq. ft  
Counted as living area: Yes

Heated: Yes  
Finished: Yes  
Enclosed: Yes  
Contiguous: Yes  
Permitted: Yes  
Wet space: No  
Addition: No  
Conversion: No

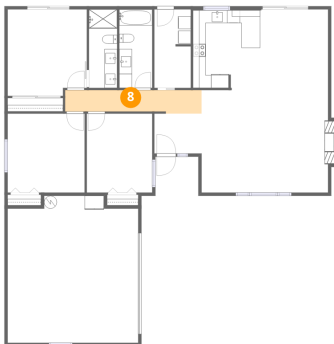
7 Floor 1 - Dining Area



Dimensions: 10'8" x 12'7"  
Area: 134 sq. ft  
Counted as living area: Yes

Heated: Yes  
Finished: Yes  
Enclosed: Yes  
Contiguous: Yes  
Permitted: Yes  
Wet space: No  
Addition: No  
Conversion: No

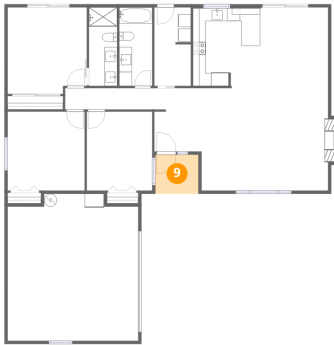
8 Floor 1 - Hall



Dimensions: 21'4" x 3'8"  
Area: 73 sq. ft  
Counted as living area: Yes

Heated: Yes  
Finished: Yes  
Enclosed: Yes  
Contiguous: Yes  
Permitted: Yes  
Wet space: No  
Addition: No  
Conversion: No

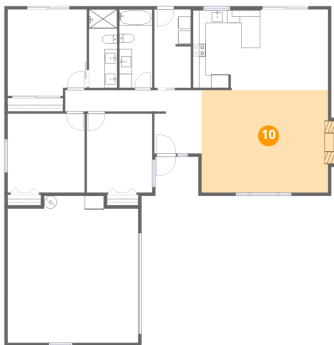
9 Floor 1 - Porch



Dimensions: 6'9" x 6'1"  
Area: 41 sq. ft  
Counted as living area: No

Heated: No  
Finished: No  
Enclosed: No  
Contiguous: Yes  
Permitted: Yes  
Wet space: No  
Addition: No  
Conversion: No

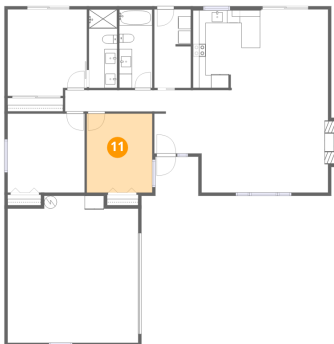
10 Floor 1 - Living Room



Dimensions: 19'9" x 16'0"  
Area: 327 sq. ft  
Counted as living area: Yes

Heated: Yes  
Finished: Yes  
Enclosed: Yes  
Contiguous: Yes  
Permitted: Yes  
Wet space: No  
Addition: No  
Conversion: No

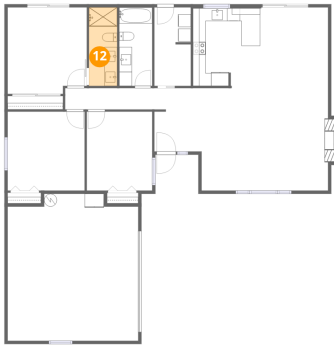
11 Floor 1 - Bedroom



Dimensions: 10'3" x 12'4"  
Area: 126 sq. ft  
Counted as living area: Yes

Heated: Yes  
Finished: Yes  
Enclosed: Yes  
Contiguous: Yes  
Permitted: Yes  
Wet space: No  
Addition: No  
Conversion: No

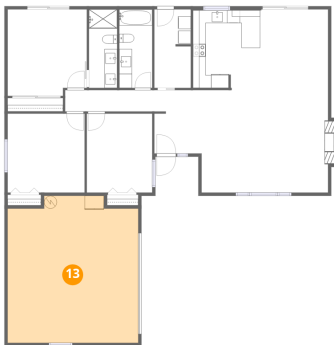
12 Floor 1 - Bath



Dimensions: 4'5" x 12'3"  
Area: 54 sq. ft  
Counted as living area: Yes

Heated: Yes  
Finished: Yes  
Enclosed: Yes  
Contiguous: Yes  
Permitted: Yes  
Wet space: Yes  
Addition: No  
Conversion: No

13 Floor 1 - Garage



Dimensions: 20'5" x 22'11"  
Area: 446 sq. ft  
Counted as living area: No

Heated: No  
Finished: Yes  
Enclosed: Yes  
Contiguous: Yes  
Permitted: Yes  
Wet space: No  
Addition: No  
Conversion: No