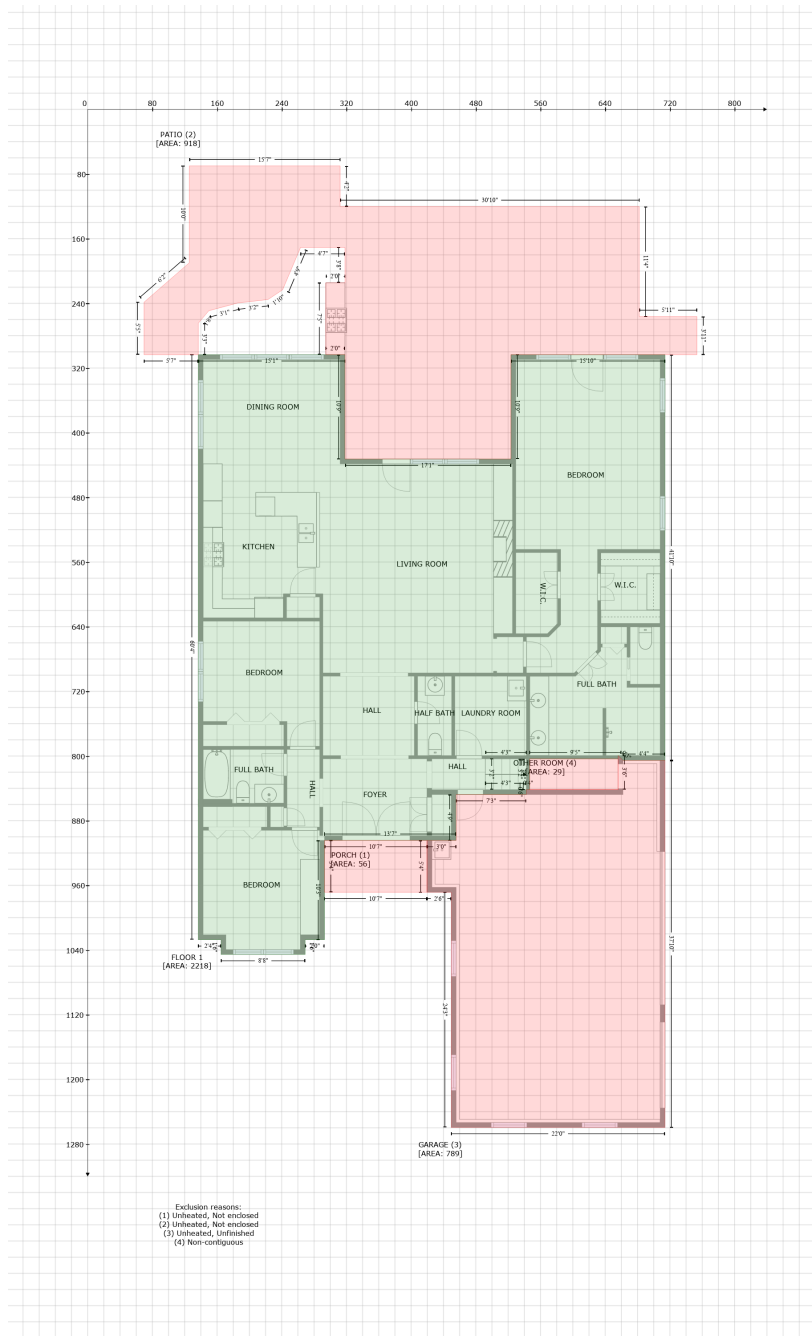


793 Monterrosa Drive, Grande Dunes, Myrtle Beach, Horry County, South Carolina, United States, 29572

Gross Living Area: 2825 sq. ft



Exclusion reasons:
 (1) Unheated, Not enclosed
 (2) Unheated, Not enclosed
 (3) Unheated, Unfinished
 (4) Non-contiguous

Space	Area (sq. ft)	Calculation
FLOOR 1 (Living area)	2218	Coordinate Polygon Area Algorithm using inches $-((318.2 + 318.2) * (303.5 - 432.6) + (318.2 + 523.5) * (432.6 - 432.6) + (523.5 + 523.5) * (432.6 - 303.5) + (523.5 + 714) * (303.5 - 303.5) + (714 + 714) * (303.5 - 805.4) + (714 + 661.9) * (805.4 - 805.4) + (661.9 + 660) * (805.4 - 803.5) + (660 + 655.9) * (803.5 - 799.4) + (655.9 + 655.9) * (799.4 - 803.5) + (655.9 + 546.6) * (803.5 - 803.5) + (546.6 + 546.6) * (803.5 - 841.7) + (546.6 + 542.6) * (841.7 - 841.7) + (542.6 + 542.6) * (841.7 - 847.7) + (542.6 + 455.6) * (847.7 - 847.7) + (455.6 + 455.6) * (847.7 - 904.4) + (455.6 + 292.9) * (904.4 - 904.4) + (292.9 + 292.9) * (904.4 - 1027.3) + (292.9 + 268.9) * (1027.3 - 1027.3) + (268.9 + 268.9) * (1027.3 - 1045.5) + (268.9 +$

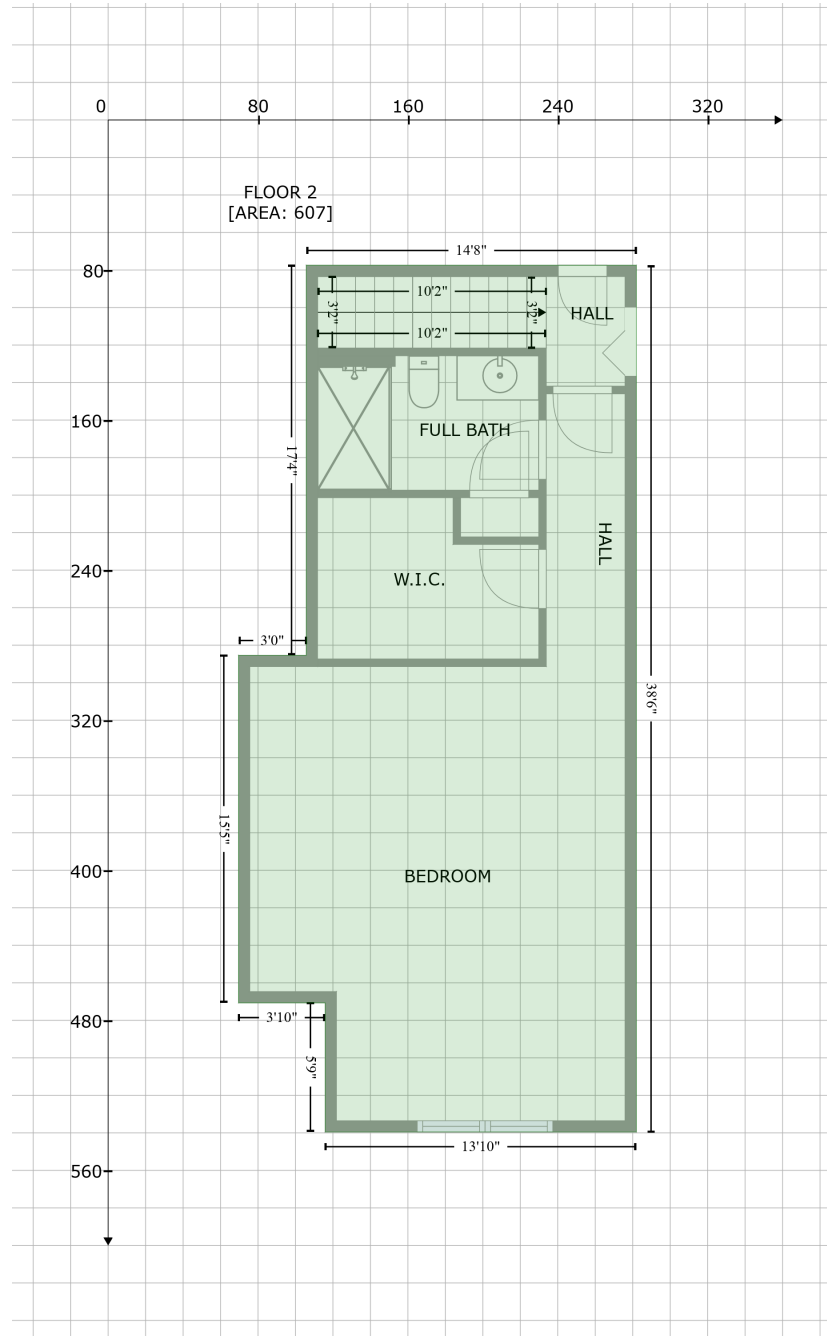
793 Monterrosa Drive, Grande Dunes, Myrtle Beach, Horry County, South Carolina, United States, 29572

Gross Living Area: 2825 sq. ft

Space	Area (sq. ft)	Calculation <small>Coordinate Polygon Area Algorithm using inches</small>
PORCH (Non-living area)	56	$165 * (1045.5 - 1045.5) + (165 + 165) * (1045.5 - 1027.3) + (165 + 136.7) * (1027.3 - 1027.3) + (136.7 + 136.7) * (1027.3 - 303.5) + (136.7 + 318.2) * (303.5 - 303.5) * 0.5 * 0.00694$
PATIO (Non-living area)	918	$-((419.6 + 419.6) * (904.4 - 968.6) + (419.6 + 292.9) * (968.6 - 968.6) + (292.9 + 292.9) * (968.6 - 904.4) + (292.9 + 419.6) * (904.4 - 904.4)) * 0.5 * 0.00694$
GARAGE (Non-living area)	789	$-((312.2 + 312.2) * (70 - 120.2) + (312.2 + 682.1) * (120.2 - 120.2) + (682.1 + 682.1) * (120.2 - 256.3) + (682.1 + 753.5) * (256.3 - 256.3) + (753.5 + 753.5) * (256.3 - 303.5) + (753.5 + 523.5) * (303.5 - 303.5) + (523.5 + 523.5) * (303.5 - 432.6) + (523.5 + 318.2) * (432.6 - 432.6) + (318.2 + 318.2) * (432.6 - 303.5) + (318.2 + 294.4) * (303.5 - 303.5) + (294.4 + 294.4) * (303.5 - 214.5) + (294.4 + 318.2) * (214.5 - 214.5) + (318.2 + 318.2) * (214.5 - 170.9) + (318.2 + 263.2) * (170.9 - 170.9) + (263.2 + 241.1) * (170.9 - 223.2) + (241.1 + 223.1) * (223.2 - 235.3) + (223.1 + 185.6) * (235.3 - 239.5) + (185.6 + 149.8) * (239.5 - 249.2) + (149.8 + 136.7) * (249.2 - 264.7) + (136.7 + 136.7) * (264.7 - 303.5) + (136.7 + 69.7) * (303.5 - 303.5) + (69.7 + 69.7) * (303.5 - 238.6) + (69.7 + 125.7) * (238.6 - 189.8) + (125.7 + 125.7) * (189.8 - 70) + (125.7 + 312.2) * (70 - 70)) * 0.5 * 0.00694$
OTHER ROOM (Non-living area)	29	$-((655.9 + 661.9) * (799.4 - 805.4) + (661.9 + 714) * (805.4 - 805.4) + (714 + 714) * (805.4 - 1259.5) + (714 + 449.6) * (1259.5 - 1259.5) + (449.6 + 449.6) * (1259.5 - 968.6) + (449.6 + 419.6) * (968.6 - 968.6) + (419.6 + 419.6) * (968.6 - 904.4) + (419.6 + 455.6) * (904.4 - 904.4) + (455.6 + 455.6) * (904.4 - 847.7) + (455.6 + 542.6) * (847.7 - 847.7) + (542.6 + 542.6) * (847.7 - 841.7) + (542.6 + 655.9) * (841.7 - 841.7) + (655.9 + 655.9) * (841.7 - 799.4)) * 0.5 * 0.00694$

793 Monterrosa Drive, Grande Dunes, Myrtle Beach, Horry County, South Carolina, United States, 29572

Gross Living Area: 2825 sq. ft



Space	Area (sq. ft)	Calculation <small>Coordinate Polygon Area Algorithm using inches</small>
FLOOR 2 (Living area)	607	$ \begin{aligned} & -((281.9 + 281.9) * (77.5 - 539.5) + (281.9 + 115.9) * (539.5 - 539.5) + (115.9 + 115.9) * (539.5 - \\ & 470.7) + (115.9 + 69.6) * (470.7 - 470.7) + (69.6 + 69.6) * (470.7 - 285.4) + (69.6 + 105.8) * \\ & (285.4 - 285.4) + (105.8 + 105.8) * (285.4 - 77.5) + (105.8 + 281.9) * (77.5 - 77.5)) * 0.5 * \\ & 0.00694 \end{aligned} $