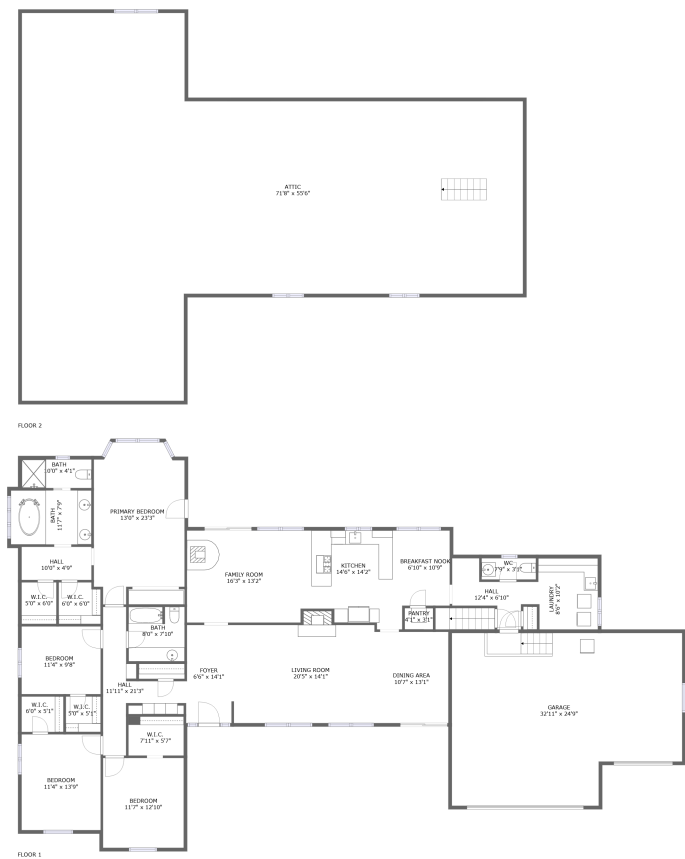


Home report

26 Deer View Lane, Templeton, San Luis Obispo County,
California, United States, 93465



Total Area: 2680 sq. ft
Floor 1: 2680 sq. ft, Floor 2: 0 sq. ft
Excluded: Garage 780 sq. ft, Low Ceiling 18 sq. ft, Attic 2754 sq. ft

Property summary

 **2** Floors

 **4** Bedrooms

 **2** Bathrooms

Home report

**26 Deer View Lane, Templeton, San Luis Obispo County,
California, United States, 93465**



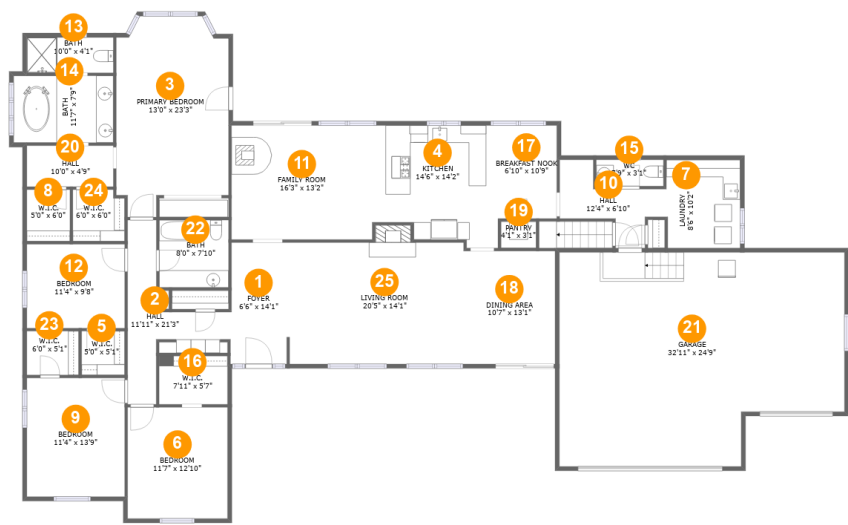
1
Half baths



1
Garages

Home report

26 Deer View Lane, Templeton, San Luis Obispo County,
California, United States, 93465



Room dimensions

Floor 1 Total:2680sqft Excluded: 798sqft

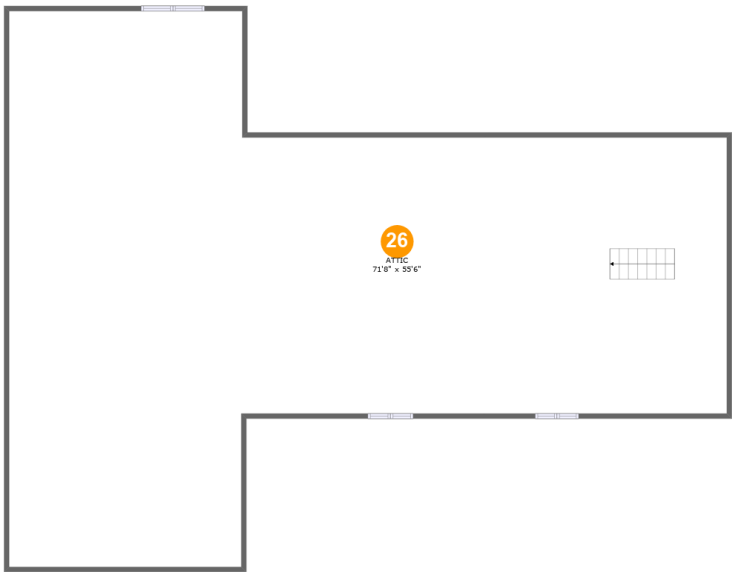
#		Max Dimensions	sqft	Included
1	Foyer	6'6" x 14'1"	90 sq. ft	Yes
2	Hall	11'11" x 21'3"	112 sq. ft	Yes
3	Primary Bedroom	13'0" x 23'3"	266 sq. ft	Yes
4	Kitchen	14'6" x 14'2"	186 sq. ft	Yes
5	W.I.C.	5'0" x 5'1"	25 sq. ft	Yes
6	Bedroom	11'7" x 12'10"	149 sq. ft	Yes
7	Laundry	8'6" x 10'2"	86 sq. ft	Yes
8	W.I.C.	5'0" x 6'0"	30 sq. ft	Yes
9	Bedroom	11'4" x 13'9"	155 sq. ft	Yes
10	Hall	12'4" x 6'10"	66 sq. ft	Yes
11	Family Room	16'3" x 13'2"	214 sq. ft	Yes

Home report

**26 Deer View Lane, Templeton, San Luis Obispo County,
California, United States, 93465**

#		Max Dimensions	sqft	Included
12	Bedroom	11'4" x 9'8"	110 sq. ft	Yes
13	Bath	10'0" x 4'1"	41 sq. ft	Yes
14	Bath	11'7" x 7'9"	89 sq. ft	Yes
15	WC	7'9" x 3'1"	24 sq. ft	Yes
16	W.I.C.	7'11" x 5'7"	44 sq. ft	Yes
17	Breakfast Nook	6'10" x 10'9"	73 sq. ft	Yes
18	Dining Area	10'7" x 13'1"	138 sq. ft	Yes
19	Pantry	4'1" x 3'1"	13 sq. ft	Yes
20	Hall	10'0" x 4'9"	47 sq. ft	Yes
21	Garage	32'11" x 24'9"	739 sq. ft	No
22	Bath	8'0" x 7'10"	62 sq. ft	Yes
23	W.I.C.	6'0" x 5'1"	30 sq. ft	Yes
24	W.I.C.	6'0" x 6'0"	34 sq. ft	Yes
25	Living Room	20'5" x 14'1"	294 sq. ft	Yes

26 Deer View Lane, Templeton, San Luis Obispo County,
California, United States, 93465



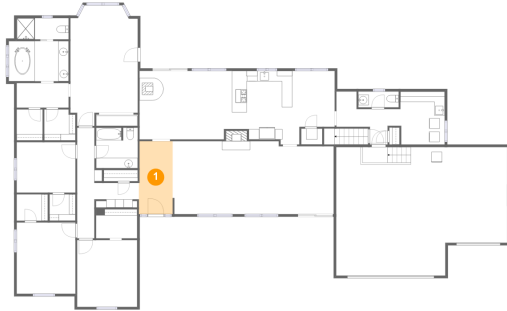
Room dimensions

Floor 2 Total:0sqft Excluded: 2754sqft

#		Max Dimensions	sqft	Included
26	Attic	71'8" x 55'6"	2626 sq. ft	No

26 Deer View Lane, Templeton, San Luis Obispo County,
California, United States, 93465

1 Floor 1 - Foyer



Max Dimensions: 6'6" x
14'1"
Calculated Area: 90 sq. ft
Included: Yes

Heated: Yes
Finished: Yes
Enclosed: Yes
Contiguous:
Yes
Permitted: Yes
Wet space: No
Addition: No
Conversion: No

2 Floor 1 - Hall

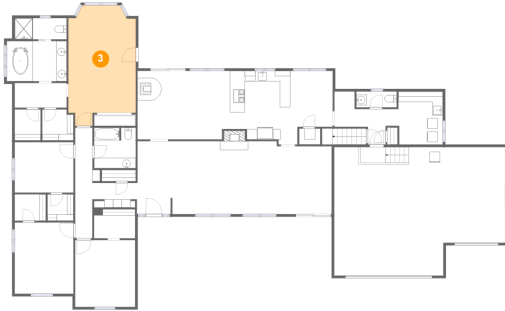


Max Dimensions: 11'11" x
21'3"
Calculated Area: 112 sq. ft
Included: Yes

Heated: Yes
Finished: Yes
Enclosed: Yes
Contiguous:
Yes
Permitted: Yes
Wet space: No
Addition: No
Conversion: No

26 Deer View Lane, Templeton, San Luis Obispo County,
California, United States, 93465

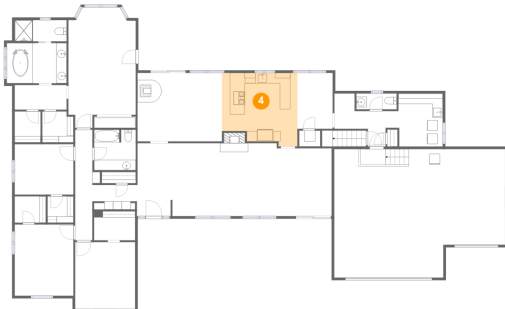
3 Floor 1 - Primary Bedroom



Max Dimensions: 13'0" x 23'3"
Calculated Area: 266 sq. ft
Included: Yes

Heated: Yes
Finished: Yes
Enclosed: Yes
Contiguous: Yes
Permitted: Yes
Wet space: No
Addition: No
Conversion: No

4 Floor 1 - Kitchen



Max Dimensions: 14'6" x 14'2"
Calculated Area: 186 sq. ft
Included: Yes

Heated: Yes
Finished: Yes
Enclosed: Yes
Contiguous: Yes
Permitted: Yes
Wet space: No
Addition: No
Conversion: No

5 Floor 1 - W.I.C.

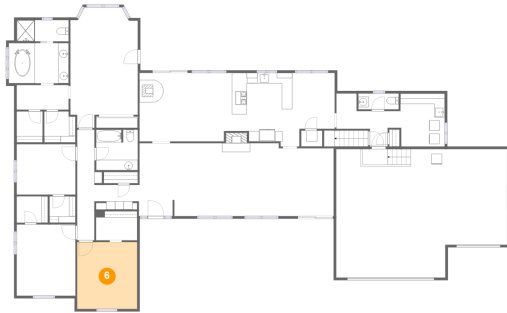


Max Dimensions: 5'0" x 5'1"
Calculated Area: 25 sq. ft
Included: Yes

Heated: Yes
Finished: Yes
Enclosed: Yes
Contiguous: Yes
Permitted: Yes
Wet space: No
Addition: No
Conversion: No

26 Deer View Lane, Templeton, San Luis Obispo County,
California, United States, 93465

6 Floor 1 - Bedroom



Max Dimensions: 11'7" x 12'10"
Calculated Area: 149 sq. ft
Included: Yes

Heated: Yes
Finished: Yes
Enclosed: Yes
Contiguous: Yes
Permitted: Yes
Wet space: No
Addition: No
Conversion: No

7 Floor 1 - Laundry



Max Dimensions: 8'6" x 10'2"
Calculated Area: 86 sq. ft
Included: Yes

Heated: Yes
Finished: Yes
Enclosed: Yes
Contiguous: Yes
Permitted: Yes
Wet space: No
Addition: No
Conversion: No

8 Floor 1 - W.I.C.



Max Dimensions: 5'0" x 6'0"
Calculated Area: 30 sq. ft
Included: Yes

Heated: Yes
Finished: Yes
Enclosed: Yes
Contiguous: Yes
Permitted: Yes
Wet space: No
Addition: No
Conversion: No

26 Deer View Lane, Templeton, San Luis Obispo County,
California, United States, 93465

9 Floor 1 - Bedroom



Max Dimensions: 11'4" x 13'9"
Calculated Area: 155 sq. ft
Included: Yes

Heated: Yes
Finished: Yes
Enclosed: Yes
Contiguous: Yes
Permitted: Yes
Wet space: No
Addition: No
Conversion: No

10 Floor 1 - Hall



Max Dimensions: 12'4" x 6'10"
Calculated Area: 66 sq. ft
Included: Yes

Heated: Yes
Finished: Yes
Enclosed: Yes
Contiguous: Yes
Permitted: Yes
Wet space: No
Addition: No
Conversion: No

11 Floor 1 - Family Room



Max Dimensions: 16'3" x 13'2"
Calculated Area: 214 sq. ft
Included: Yes

Heated: Yes
Finished: Yes
Enclosed: Yes
Contiguous: Yes
Permitted: Yes
Wet space: No
Addition: No
Conversion: No

26 Deer View Lane, Templeton, San Luis Obispo County,
California, United States, 93465

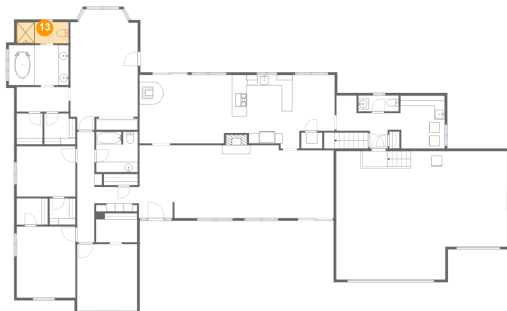
12 Floor 1 - Bedroom



Max Dimensions: 11'4" x 9'8"
Calculated Area: 110 sq. ft
Included: Yes

Heated: Yes
Finished: Yes
Enclosed: Yes
Contiguous: Yes
Permitted: Yes
Wet space: No
Addition: No
Conversion: No

13 Floor 1 - Bath



Max Dimensions: 10'0" x 4'1"
Calculated Area: 41 sq. ft
Included: Yes

Heated: Yes
Finished: Yes
Enclosed: Yes
Contiguous: Yes
Permitted: Yes
Wet space: Yes
Addition: No
Conversion: No

14 Floor 1 - Bath



Max Dimensions: 11'7" x 7'9"
Calculated Area: 89 sq. ft
Included: Yes

Heated: Yes
Finished: Yes
Enclosed: Yes
Contiguous: Yes
Permitted: Yes
Wet space: Yes
Addition: No
Conversion: No

26 Deer View Lane, Templeton, San Luis Obispo County,
California, United States, 93465

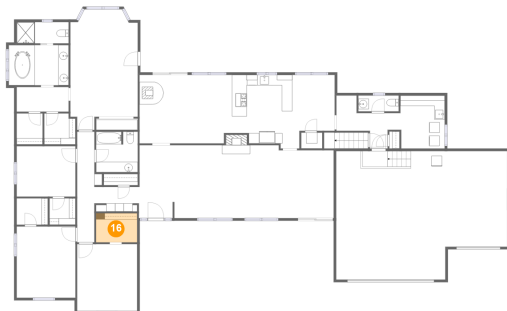
15 Floor 1 - WC



Max Dimensions: 7'9" x 3'1"
Calculated Area: 24 sq. ft
Included: Yes

Heated: Yes
Finished: Yes
Enclosed: Yes
Contiguous: Yes
Permitted: Yes
Wet space: Yes
Addition: No
Conversion: No

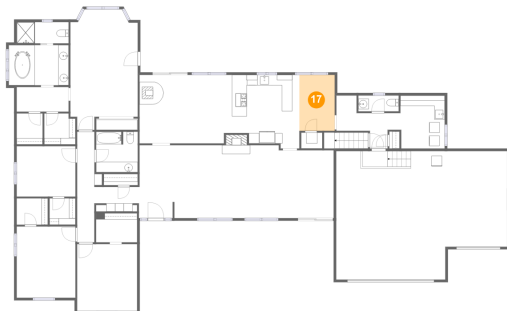
16 Floor 1 - W.I.C.



Max Dimensions: 7'11" x 5'7"
Calculated Area: 44 sq. ft
Included: Yes

Heated: Yes
Finished: Yes
Enclosed: Yes
Contiguous: Yes
Permitted: Yes
Wet space: No
Addition: No
Conversion: No

17 Floor 1 - Breakfast Nook

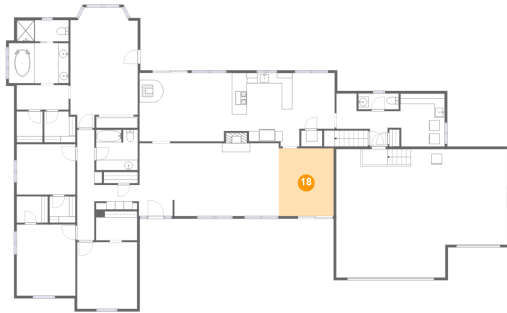


Max Dimensions: 6'10" x 10'9"
Calculated Area: 73 sq. ft
Included: Yes

Heated: Yes
Finished: Yes
Enclosed: Yes
Contiguous: Yes
Permitted: Yes
Wet space: No
Addition: No
Conversion: No

26 Deer View Lane, Templeton, San Luis Obispo County,
California, United States, 93465

18 Floor 1 - Dining Area



Max Dimensions: 10'7" x 13'1"
Calculated Area: 138 sq. ft
Included: Yes

Heated: Yes
Finished: Yes
Enclosed: Yes
Contiguous: Yes
Permitted: Yes
Wet space: No
Addition: No
Conversion: No

19 Floor 1 - Pantry



Max Dimensions: 4'1" x 3'1"
Calculated Area: 13 sq. ft
Included: Yes

Heated: Yes
Finished: Yes
Enclosed: Yes
Contiguous: Yes
Permitted: Yes
Wet space: No
Addition: No
Conversion: No

20 Floor 1 - Hall



Max Dimensions: 10'0" x 4'9"
Calculated Area: 47 sq. ft
Included: Yes

Heated: Yes
Finished: Yes
Enclosed: Yes
Contiguous: Yes
Permitted: Yes
Wet space: No
Addition: No
Conversion: No

26 Deer View Lane, Templeton, San Luis Obispo County,
California, United States, 93465

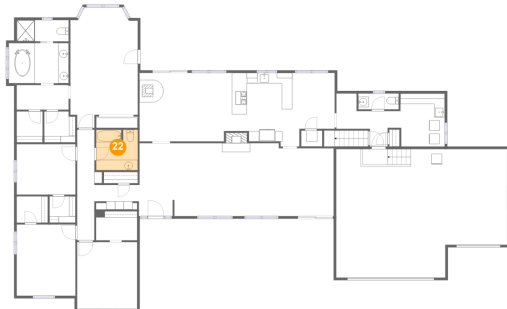
21 Floor 1 - Garage



Max Dimensions: 32'11" x 24'9"
Calculated Area: 739 sq. ft
Included: No

Heated: No
Finished: No
Enclosed: Yes
Contiguous: Yes
Permitted: Yes
Wet space: No
Addition: No
Conversion: No

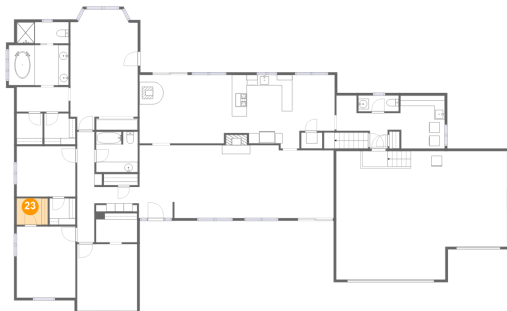
22 Floor 1 - Bath



Max Dimensions: 8'0" x 7'10"
Calculated Area: 62 sq. ft
Included: Yes

Heated: Yes
Finished: Yes
Enclosed: Yes
Contiguous: Yes
Permitted: Yes
Wet space: Yes
Addition: No
Conversion: No

23 Floor 1 - W.I.C.



Max Dimensions: 6'0" x 5'1"
Calculated Area: 30 sq. ft
Included: Yes

Heated: Yes
Finished: Yes
Enclosed: Yes
Contiguous: Yes
Permitted: Yes
Wet space: No
Addition: No
Conversion: No

26 Deer View Lane, Templeton, San Luis Obispo County,
California, United States, 93465

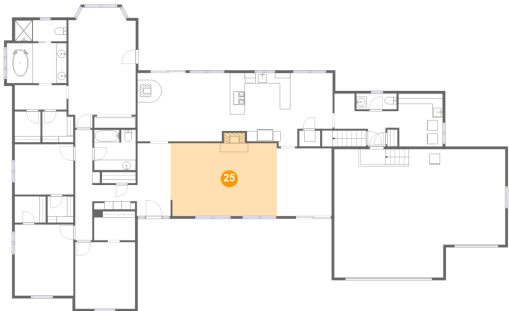
24 Floor 1 - W.I.C.



Max Dimensions: 6'0" x 6'0"
Calculated Area: 34 sq. ft
Included: Yes

Heated: Yes
Finished: Yes
Enclosed: Yes
Contiguous: Yes
Permitted: Yes
Wet space: No
Addition: No
Conversion: No

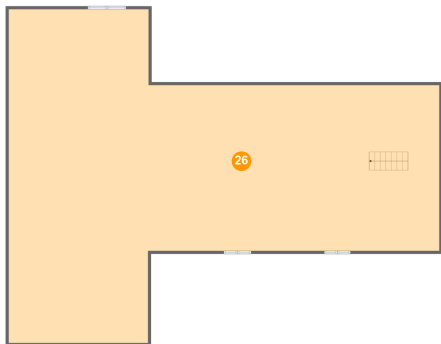
25 Floor 1 - Living Room



Max Dimensions: 20'5" x 14'1"
Calculated Area: 294 sq. ft
Included: Yes

Heated: Yes
Finished: Yes
Enclosed: Yes
Contiguous: Yes
Permitted: Yes
Wet space: No
Addition: No
Conversion: No

26 Floor 2 - Attic



Max Dimensions: 71'8" x 55'6"
Calculated Area: 2626 sq. ft
Included: No

Heated: No
Finished: No
Enclosed: Yes
Contiguous: Yes
Permitted: Yes
Wet space: No
Addition: No
Conversion: No